

Product datasheet for **RG201501**

EAPP (NM_018453) Human Tagged ORF Clone

Product data:

Product Type:	Expression Plasmids
Product Name:	EAPP (NM_018453) Human Tagged ORF Clone
Tag:	TurboGFP
Symbol:	EAPP
Synonyms:	BM036; C14orf11
Mammalian Cell Selection:	Neomycin
Vector:	pCMV6-AC-GFP (PS100010)
E. coli Selection:	Ampicillin (100 ug/mL)
ORF Nucleotide Sequence:	>RG201501 representing NM_018453 Red=Cloning site Blue=ORF Green=Tags(s)

TTTTGTAATACGACTCACTATAGGGCGGCCGGAATTCGTCGACTGGATCCGGTACCGAGGAGATCTGCC
GCC**CGATCGCC**

ATGAACCGGCTTCCGGATGACTACGACCCCTACGCGTTGAAGAGCCTAGCGACGAGGAGCCGGCTTTGA
GCAGCTCTGAGGATGAAGTGGATGTGCTTTTACATGGAACCTCTGACCAAAAACGAAAACATCAGAGA
ATGTCTTACCGGAGAAAGTGAATCATCTAGTGAAGATGAATTTGAAAAGGAGATGGAAGCTGAATTAAT
TCTACCATGAAAACAATGGAGGACAAGTTATCCTCTCTGGGAACGGATCTTCTCAGGAAATGGAAAAG
TTGCAACAGCTCCGACAAGTACTACGATGATATATATTTGATTCTGATTCCGAGGATGAAGACAGAGC
AGTACAGGTGACCAAGAAAAAAGAAGAAACAACAAGATTCCAACAATGACGAATTAATGATGAT
CCTGAAAAGATAACAGAGATCAGGCCTGGGTTGATGCACAGAGAAGGGTTACCATGGTTGGGACCAC
AGAGATCACGTGAACAACAGCCTGTTCCAAATAGTGTGCTGCTTGAATTGTCCTGCCTGCATGACCAC
ACTTTGCCTTGATTGCCAAAGGCATGAATCATAAAAACCAATATAGAGCAATGTTTGAATGAATTGT
TCTATTAACAAGAGGAGGTTCTAAGATATAAAGCCTCAGAGAACAGGAAGAAAAGCGGGTCCATAAGA
AGATGAGGTCTAACCAGGAAGATGCTGCTGAGAAGGCAGAGACAGATGTGGAAGAAATCTATCACCAGT
CATGTGCACTGAATGTTCCACTGAAGTGGCAGTCTACGACAAGGATGAAGCTTTTCATTTTTTCAATGTT
TTAGCAAGCCATTCC

ACGCGTACGCGGCCGCTCGAG - GFP Tag - GTTTAA



[View online »](#)

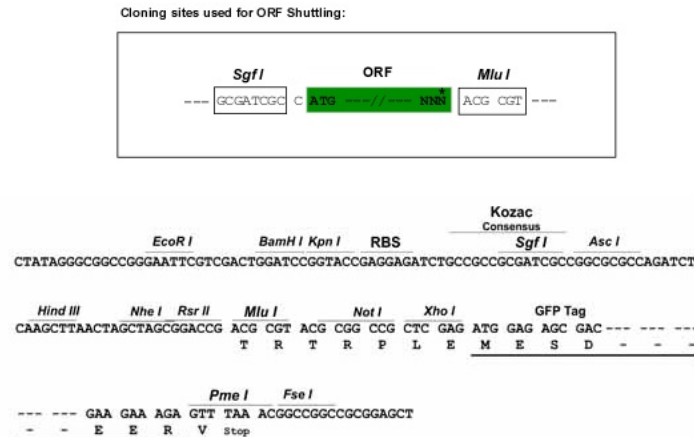
Protein Sequence: >RG201501 representing NM_018453
 Red=Cloning site Green=Tags(s)

MNRLPDDYDPYAVEEPSDEEPALSSSEDEVLLHGTPDQKRKLI RECLTGESESSSEDEFEKEMAE LN
 STMKTMEDKLSLGTGSSSGNGKVATAPTRYDDIYFSDSEDEDRAVQVTKKKKKQHKIPTNDELLYD
 PEKDNRDQAWVDAQRRGYHGLGPQRSREQQPVPNSDAVLNCPACMTTLCLDCQRHESYKTQYRAMFVMNC
 SINKEEVLRYKASENRKKRRVHKMKMRSNQEDA AEKAETDVEE IYHPVMCTECSTEVAVYDKDEVFHF FNV
 LASHS

TRTRPLE - GFP Tag - V

Restriction Sites: SgfI-MluI

Cloning Scheme:



ACCN: NM_018453

ORF Size: 855 bp

OTI Disclaimer: The molecular sequence of this clone aligns with the gene accession number as a point of reference only. However, individual transcript sequences of the same gene can differ through naturally occurring variations (e.g. polymorphisms), each with its own valid existence. This clone is substantially in agreement with the reference, but a complete review of all prevailing variants is recommended prior to use. [More info](#)

OTI Annotation: This clone was engineered to express the complete ORF with an expression tag. Expression varies depending on the nature of the gene.

Components: The ORF clone is ion-exchange column purified and shipped in a 2D barcoded Matrix tube containing 10ug of transfection-ready, dried plasmid DNA (reconstitute with 100 ul of water).

Reconstitution Method:

1. Centrifuge at 5,000xg for 5min.
2. Carefully open the tube and add 100ul of sterile water to dissolve the DNA.
3. Close the tube and incubate for 10 minutes at room temperature.
4. Briefly vortex the tube and then do a quick spin (less than 5000xg) to concentrate the liquid at the bottom.
5. Store the suspended plasmid at -20°C. The DNA is stable for at least one year from date of shipping when stored at -20°C.

RefSeq: [NM_018453.3](#), [NP_060923.2](#)

RefSeq Size: 1363 bp

RefSeq ORF: 858 bp

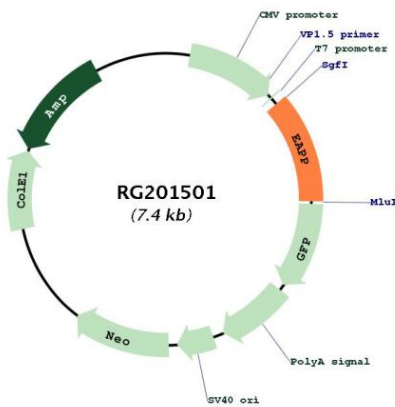
Locus ID: 55837

UniProt ID: [Q56P03](#)

Cytogenetics: 14q13.1

Gene Summary: This gene encodes a phosphoprotein that interacts with several members of the E2F family of proteins. The protein localizes to the nucleus, and is present throughout the cell cycle except during mitosis. It functions to modulate E2F-regulated transcription and stimulate proliferation. Alternative splicing results in multiple transcript variants. [provided by RefSeq, Jan 2016]

Product images:



Circular map for RG201501