

Product datasheet for **RG201489**

ZDHHC4 (NM_018106) Human Tagged ORF Clone

Product data:

Product Type:	Expression Plasmids
Product Name:	ZDHHC4 (NM_018106) Human Tagged ORF Clone
Tag:	TurboGFP
Symbol:	ZDHHC4
Synonyms:	ZNF374
Mammalian Cell Selection:	Neomycin
Vector:	pCMV6-AC-GFP (PS100010)
E. coli Selection:	Ampicillin (100 ug/mL)
ORF Nucleotide Sequence:	>RG201489 representing NM_018106 Red=Cloning site Blue=ORF Green=Tags(s)

TTTTGTAATACGACTCACTATAGGGCGGCCGGAATTCGTCGACTGGATCCGGTACCGAGGAGATCTGCC
GCC**CGATCGCC**

ATGGACTTTCTGGTCTCTTCTTGTCTACCTGGCTTCGGTGCTGATGGGTCTTGTCTTATCTGCGTCT
GCTCGAAAACCCATAGCTTGAAAGGCCTGGCCAGGGGAGGAGCACAGATATTTTCTGTATAATTCCAGA
ATGTCTTCAGAGAGCCGTGCATGGATTGCTTCATTACCTTTCCATACGAGAAACCACACCTTCATTGTC
CTGCACCTGGTCTTGCAAGGGATGGTTATACTGAGTACACCTGGGAAGTATTTGGCTACTGTCAGGAGC
TGGAGTTGTCCTTGCATTACCTTCTTCTGCCCTATCTGCTGCTAGGTGTAACCTGTTTTTTTCCACCT
GACTTGTGGAACCAATCCTGGCATTATAACAAAAGCAAAATGAATTATTATTTCTTCATGTTTATGAATT
GATGAAGTGATGTTTCCAAGAACGTGAGGTGCTCTACTTGTGATTTAAGGAAACCAGCTCGATCCAAGC
ACTGCAGTGTGTGAACCTGGTGTGTGCACCGTTTCGACCATCACTGTGTTGGGTGAACAACCTGCATCGG
GGCCTGGAACATCAGGTACTTCCATCTACGTCTTGACCTTGACGGCCTCGGCTGCCACCGTCGCCATT
GTGAGCACCACCTTTCTGGTCCACTTGGTGGTGTGATGTCAGATTTATACCAGGAGACTTACATCGATGACC
TTGGACACCTCCATGTTATGGACACGGTCTTTCTTATTCAGTACCTGTTCTGACTTTTCCACGGATTGT
CTTCATGCTGGCTTTGTCGTGGTCTGAGCTTCTCCTGGGTGGCTACCTGTTGTTTGTCTGTATCTG
GCGGCCACCAACCAGACTACTAACGAGTGGTACAGAGGTGACTGGCCTGGTGGCAGCGTTGTCCTTGT
TGGCCTGGCCTCCGTGAGCAGAGCCCAAGTCCACCGGAACATTCACTCCATGGGCTTCGGAGCAACCT
TCAAGAGATCTTCTACCTGCCTTTCCATGTCATGAGAGGAAGAAACAAGAA

ACGCGTACGCGGCCGCTCGAG - GFP Tag - GTTTAA



[View online »](#)

Protein Sequence: >RG201489 representing NM_018106
Red=Cloning site Green=Tags(s)

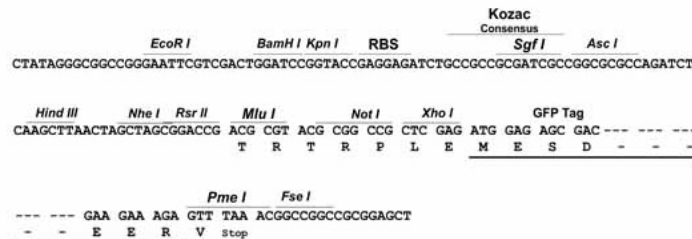
MDFLVLFLFYLASVLMGLVLICVSKTHSLKGLARGGAQIFSCIPECLQRAVHGLLHYLFHTRNHTFIV
 LHLVLQGMVYTEYTWVEVFGYCQELELSLHYLLPYLLLGVNLFFFLLTCGTNPGIITKANELLFLHVYEF
 DEVMFPKNVRCSTCDLRKPARSKHCSVCNWCVHRFDHHCVVWNNCIGAWNIRYFLIYVLTASAATVAI
 VSTTFLVHLVMSDLYQETYIDDLGHLHVMDTVFLIQYLFLLFPFRIVFMLGFVVVLSFLLGGYLLFVLYL
 AATNQTNEWYRGDWAWCQRCPLVAWPPSAEPQVHRNIHSHGLRSNLQEIFLPAFPCHERKKQE

TRTRPLE - GFP Tag - V

Restriction Sites: SgfI-MluI

Cloning Scheme:

Cloning sites used for ORF Shuttling:



ACCN: NM_018106

ORF Size: 1032 bp

OTI Disclaimer: The molecular sequence of this clone aligns with the gene accession number as a point of reference only. However, individual transcript sequences of the same gene can differ through naturally occurring variations (e.g. polymorphisms), each with its own valid existence. This clone is substantially in agreement with the reference, but a complete review of all prevailing variants is recommended prior to use. [More info](#)

OTI Annotation: This clone was engineered to express the complete ORF with an expression tag. Expression varies depending on the nature of the gene.

Components: The ORF clone is ion-exchange column purified and shipped in a 2D barcoded Matrix tube containing 10ug of transfection-ready, dried plasmid DNA (reconstitute with 100 ul of water).

Reconstitution Method:

1. Centrifuge at 5,000xg for 5min.
2. Carefully open the tube and add 100ul of sterile water to dissolve the DNA.
3. Close the tube and incubate for 10 minutes at room temperature.
4. Briefly vortex the tube and then do a quick spin (less than 5000xg) to concentrate the liquid at the bottom.
5. Store the suspended plasmid at -20°C. The DNA is stable for at least one year from date of shipping when stored at -20°C.

RefSeq: [NM_018106.4](#)

RefSeq Size: 1704 bp

RefSeq ORF: 1035 bp

Locus ID: 55146

UniProt ID: [Q9NPG8](#)

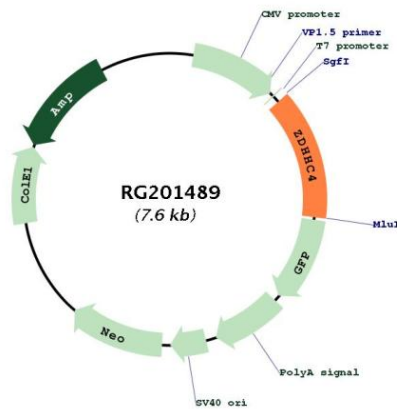
Cytogenetics: 7p22.1

Domains: zf-DHHC

Protein Families: Transmembrane

Gene Summary: Palmitoyltransferase that could catalyze the addition of palmitate onto protein substrates including the D(2) dopamine receptor DRD2.[UniProtKB/Swiss-Prot Function]

Product images:



Circular map for RG201489