

Product datasheet for **RG201405**

ALG9 (NM_024740) Human Tagged ORF Clone

Product data:

| | |
|---------------------------|---|
| Product Type: | Expression Plasmids |
| Product Name: | ALG9 (NM_024740) Human Tagged ORF Clone |
| Tag: | TurboGFP |
| Symbol: | ALG9 |
| Synonyms: | CDG1L; DIBD1; GIKANIS; LOH11CR1J |
| Mammalian Cell Selection: | Neomycin |
| Vector: | pCMV6-AC-GFP (PS100010) |
| E. coli Selection: | Ampicillin (100 ug/mL) |



[View online »](#)

ORF Nucleotide Sequence:

>RG201405 representing NM_024740
 Red=Cloning site Blue=ORF Green=Tags(s)

TTTTGTAATACGACTCACTATAGGGCGGCCGGGAATTCGTCGACTGGATCCGGTACCGAGGAGATCTGCC
 GCC**CGGATCGCC**

ATGGCTAGTCGAGGGGCTCGGCAGCGCCTGAAGGGCAGCGGGGCCAGCAGTGGGGATACGGCCCCGGCTG
 CGGACAAGCTGCGGGAGCTGCTGGGCAGCCGAGAGGCGGGCGGCGGAGCACCGGACCGAGTTATCTGG
 GAACAAAGCAGGACAAGTCTGGGCACCTGAAGGATCTACTGCTTTCAAGTGTCTGCTTTCAGCAAGGTTA
 TGTGCTGCTCTCCTGAGCAACATCTCTGACTGTGATGAAACATTCAACTACTGGGAGCCAACACACTACC
 TCATCTATGGGGAAGGGTTTCAGACTTGGGAATATTCCCAGCATATGCCATTGCTCCTATGCTTACCT
 GTTGCTTCATGCCTGGCCAGCTGCATTTTCATGCAAGAATTCTACAACTAATAAGATTCTGTGTTTTAC
 TTTTTCGATGTCTTCTGGCTTTTGTGAGCTGTATTTGTAACCTTACTTTTACAAGGCTGTGTGAAGA
 AGTTTGGGTTGCACGTGAGTGAATGATGCTAGCCTTCTTGGTCTCAGCACTGGCATGTTTTGCTCATC
 ATCAGCATTCTCCTAGTAGCTTCTGTATGTACACTACGTTGATAGCCATGACTGGATGGTATATGGAC
 AAGACTTCCATTGCTGTGCTGGGAGTAGCAGCTGGGGCTATCTTAGGCTGGCCATTCACTGCAGCTCTTG
 GTTACCCATTGCCTTTGATTTGCTGGTCATGAAACACAGGTGGAAGAGTTTCTTTCATTGGTCGCTGAT
 GGCCCTCATACTATTTCTGGTGCCTGTGGTGGTCATTGACAGCTACTATTATGGGAAGTTGGTGATTGCA
 CCACTCAACATTGTTTTGTATAATGTCTTTACTCCTCATGGACCTGATCTTTATGGTACAGAACCCTGGT
 ATTTCTATTTAATTAATGGATTTCTGAATTTCAATGTAGCCTTTGCTTTGGCTCTCCTAGTCCTACCACT
 GACTTCTCTTATGGAATACCTGCTGCAGAGATTTTCATGTTTCAAGATTTAGGCCACCCGATTGGCTTACC
 TTGGCTCCAATGTATATTTGGTTTATAATTTTCTTCATCCAGCCTCACAAAGAGGAGAGATTTCTTTTCC
 CTGTGTATCCACTTATATGTCTCTGTGGCGCTGTGGCTCTCTGCACTTCAGCACAGTTTCTGTACTT
 CCAGAAATGTTACCACTTTGTGTTTCAACGATATCGCCTGGAGCACTATACTGTGACATCGAATTGGCTG
 GCATTAGGAAGTGTCTTCTGTTGGGCTCTTGTCAATTTCTCGCTCTGTGGCACTGTTTCAAGGATATC
 ACGGGCCCTTGATTTGTATCCAGAATTTTACCGAATTGTACAGACCCAACCATCCACACTGTCCAGA
 AGGCAGACCTGTGAATGTCTGTGTGGGAAAAGAGTGGTATCGATTTCCAGCAGCTTCTTCTTCTGAC
 AATTGGCAGCTTCAGTTTCATCCATCAGAGTTCAGAGGTCAGTTACCAAAACCTTTTGCAGAAGGACCTC
 TGGCCACCCGATTGTTCTACTGACATGAATGACCAGAATCTAGAAGAGCCATCCAGATATATTGATAT
 CAGTAAATGCCATTATTTAGTGGATTTGGACACCATGAGAGAAACACCCGGGAGCCAAAATATTATCC
 AATAAAGAAGAATGGATCAGCTTGGCCTATAGACCATTCTTGATGCTTCTAGATCTTCAAAGCTGCTGC
 GGGCATTCTATGTCCCTTCTGTGATCAGTATACAGTGTACGTAACTACACCATCCTCAAACCCCG
 GAAAGCAAAGCAAATCAGGAAGAAAAGTGGAGGT

ACGCGTACGCGGCCGCTCGAG – GFP Tag – GTTTAA

Protein Sequence:

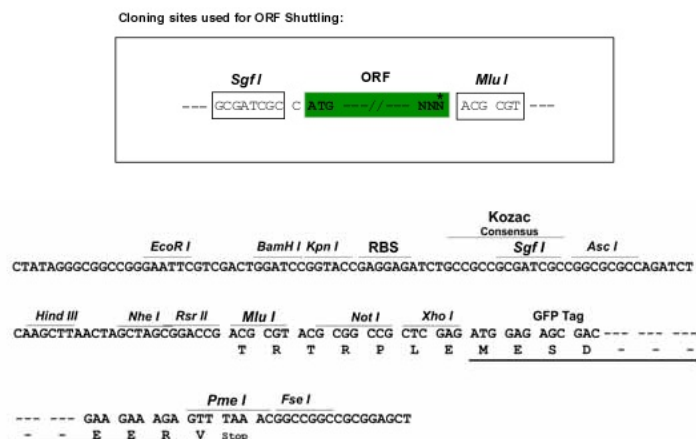
>RG201405 representing NM_024740
 Red=Cloning site Green=Tags(s)

MASRGARQRLKSGSGASGDTAPAADKLRELLGSREAGGAHRTEL SGNKAGQVWAPEGSTAFKCLLSARL
 CAALLSNISDCDETFNYWEPHYLIYGEFQTWEYSPAYAIRSYAYLLLHAWPAAFHARILQTNKILVFY
 FLRCLLAFVSCICELYFYKAVCKKFLHVSRRMLAFLVLSTGMFCSSSAFLPSSFCMYTTLIAMTWYMD
 KTSIAVLGVAAGAILGWPFSALGLPIAFDLLVMKHWKSFHWSLMALILFLVPVVVIDSYYYGKLVIA
 PLNIVLYNVFTPHGPDLYGTEPWYFYLINGFLNFNVAFALALLVLPLTSLMEYLLQRFHVQNLGHPYWL
 LAPMYIWFIIFFIQPHKEERFLFPVYPLICLGAVALSALQHSFLYFQKCYHFVFQRYRLEHYTVTSNWL
 ALGTVFLFGLLSFSRSVALFRGYHGPLDLYPEFYRIATDPTIHTVPEGRPVNVGVKEWYRFPSSFLLPD
 NWQLQFIPSEFRQLPKPFAEGPLATRIPTDMNDQNLLEPSRYIDISKCHYLVLDTMRETPREPKYSS
 NKEEWISLAYRPFLDASRSSKLLRAFYPFLSDQYTVVYNYTILKPRKAKQIRKSSGG

TRTRPLE – GFP Tag – V

Restriction Sites:

SgfI-MluI

Cloning Scheme:


ACCN: NM_024740

ORF Size: 1854 bp

OTI Disclaimer: The molecular sequence of this clone aligns with the gene accession number as a point of reference only. However, individual transcript sequences of the same gene can differ through naturally occurring variations (e.g. polymorphisms), each with its own valid existence. This clone is substantially in agreement with the reference, but a complete review of all prevailing variants is recommended prior to use. [More info](#)

OTI Annotation: This clone was engineered to express the complete ORF with an expression tag. Expression varies depending on the nature of the gene.

Components: The ORF clone is ion-exchange column purified and shipped in a 2D barcoded Matrix tube containing 10ug of transfection-ready, dried plasmid DNA (reconstitute with 100 ul of water).

Reconstitution Method:

1. Centrifuge at 5,000xg for 5min.
2. Carefully open the tube and add 100ul of sterile water to dissolve the DNA.
3. Close the tube and incubate for 10 minutes at room temperature.
4. Briefly vortex the tube and then do a quick spin (less than 5000xg) to concentrate the liquid at the bottom.
5. Store the suspended plasmid at -20°C. The DNA is stable for at least one year from date of shipping when stored at -20°C.

RefSeq: [NM_024740.2](#), [NP_079016.2](#)

RefSeq Size: 6158 bp

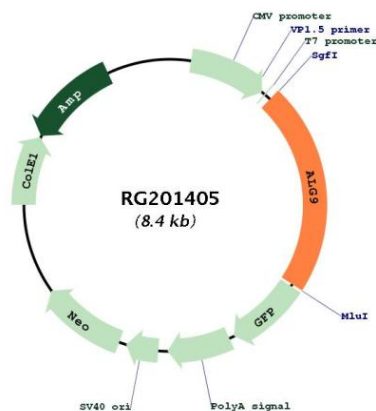
RefSeq ORF: 1857 bp

Locus ID: 79796

UniProt ID: [Q9H6U8](#)

| | |
|--------------------------|--|
| Cytogenetics: | 11q23.1 |
| Protein Families: | Transmembrane |
| Protein Pathways: | Metabolic pathways, N-Glycan biosynthesis |
| Gene Summary: | This gene encodes an alpha-1,2-mannosyltransferase enzyme that functions in lipid-linked oligosaccharide assembly. Mutations in this gene result in congenital disorder of glycosylation type II. Multiple transcript variants encoding different isoforms have been found for this gene. [provided by RefSeq, Dec 2008] |

Product images:



Circular map for RG201405