

Product datasheet for **RG201403**

ABCF3 (NM_018358) Human Tagged ORF Clone

Product data:

Product Type:	Expression Plasmids
Product Name:	ABCF3 (NM_018358) Human Tagged ORF Clone
Tag:	TurboGFP
Symbol:	ABCF3
Synonyms:	EST201864
Mammalian Cell Selection:	Neomycin
Vector:	pCMV6-AC-GFP (PS100010)
E. coli Selection:	Ampicillin (100 ug/mL)



[View online »](#)

ORF Nucleotide Sequence:

>RG201403 representing NM_018358
 Red=Cloning site Blue=ORF Green=Tags(s)

TTTTGTAATACGACTCACTATAGGGCGGCCGGAATTCGTCGACTGGATCCGGTACCGAGGAGATCTGCC
 GCC**CGGATCGCC**

ATGGCGACTTGCGCCGAAATCCTGCGGAGCGAGTTCGCCGAAATTGACGGACAAGTCTTCGACTACGTGA
 CCGGCGTCTTGACACAGCGCAGCGCGGACTTCGAGTCTGTGGATGACCTGGTGGAAAGCTGTAGGGGAACT
 ATTGCAAGAGGTGCCGGGACAGCAAGGATGACGCGGGCATCAGGGCCGTGTGCCAGCGCATGTACAAC
 ACTCTGGCTTGCTGAGCCACAAAGCCAGGAAATAGCCAGGTGCTACTGGACGCCCTATCCAGTTGT
 CAAAGATAACGGAGAACTACGACTGTGGAACAAACTTCCAGGACTGCTAAAGAGGGAACAGTCTCGAC
 AGTGAATGCAAAGAAGTTAGAGAAGGCCGAGGCTCGACTTAAGGCAAAGCAGGAGAAGCGCTCAGAGAAG
 GACACGCTCAAGACCAGCAACCTCTAGTCTTAGAAGAGGCATCAGCCAGCCAGGCAGGCAGCAGAAAGG
 AGAGTCGGTTGGAATCATCTGGCAAGAACAATCCTATGATGTGCGAATTGAGAAGTTGATGTGTCTTT
 TGCGGATAGAGTACTGCTGGCTGGAGCGGATGTGAACCTGGCATGGGGCCCGCTTACGGCTGGTGGGG
 CGGAATGGGTTGGGGAAGACAACGTTACTGAAGATGCTGGCCACCCGGAGTCTGCGGGTCCAGCCACA
 TTTCCCTGCTGCACGTTGAGCAAGAGGTTGCTGGAGATGACACTCCTGCCCTGCAGAGTGTGCTGGAGAG
 TGACAGTGTGCGAGAGGATTTGTTACGGAGGGAGCGGGAGCTCACTGCCAGATTGCTGCTGGCAGGGCG
 GAGGGCTCTGAAGCTGCAGAGCTGGCAGAAATCTATGCCAAACTGGAGGAGATTGAGGCTGACAAGGCAC
 CTGCCAGGGCATCAGTCAATCTCGCTGGGCTTGGCTTTACCCCTAAAATGCAGCAGCAGCCACCCGGGA
 GTTCTCAGGTGGTGGAGGATGAGGCTGGCCCTGGCCCGGCCCTTTGCTAGGCCAGATCTTCTGCTG
 TTAGATGAACCTACAACATGCTGGATGTCAGGGCCATCCTGTGGCTGGAGAATTACCTGCAGACGTGGC
 CCTCCACCATCCTAGTCGCTCCCACGACCGCAACTTCTTGAATGCCATCGCCACAGACATCATCCACCT
 GCACAGCCAGCGCTAGATGGTTACCGGGGAGACTTTGAGACCTTCATCAAGAGTAAGCAGGAGCGGCTG
 CTCAACCCAGCAGCGTGAATATGAGGCGCAGCAGTATCGCCAGCACATCCAGTTTTTCATTGACCGGT
 TTCGCTACAATGCCAACAGGGCCTCTCAAGTGCAGAGTAAACTCAAGATGCTGGAGAAGTGCCTGAGCT
 GAAGCCTGTGGACAAGGAATCAGAGGTCGTAATGAAGTCCCTGATGGGTTTGGAGAAGTTCTCGCCGCCA
 ATTCTGCAGCTAGATGAGGTGGATTTCTACTACGATCCGAAGCACGTCACTTCAGTCGCCTCTCTGTGT
 CTGCTGATCTCGAGTCTCGCATCTGTGTGGTTGGAGAGAATGGGGCTGGGAAGTCTACCATGCTGAAGCT
 GCTTTTGGGGACCTGGCACCTGTTCCGGGCATCAGACACGCTCACAGGAATCTGAAGATTGGCTATTTCC
 AGCCAGCACCATGTGGAGCAGCTGGACCTAAACGTCAGTCTGTGGAAGTCTGGCACGCAAGTTTCTCTG
 GCGGCCCTGAGGAGGAGTACCGTACCAGCTGGGTCGGTATGGCATCTCCGGAGAAGTGGCCATCGGTCC
 TCTTGCCAGCCTGTCTGGGGCCAGAAGAGCCGAGTGGCCTTTGCTCAGATGACTATGCCCTGCCCAAC
 TTCTACATTCTGGATGAACCCACAAACCACCTGGACATGGAGACCATTGAGGCTCTGGGCCGTGCCCTCA
 ACAATTTAGGGGTGGTGTGATTCTGGTGTCCCACGATGAGCGCTTATCAGGCTGGTGTCCCGGAGTT
 GTGGGTATGCGAAGGAGGCGGCTCACCCGTGTGGAAGGAGGATTTGACCAGTACCGCGCCCTCCTCCAG
 GAACAGTCCGCCCGAAGGCTTCCTC

ACGCGTACGCGGCCGCTCGAG - GFP Tag - GTTTAA

Protein Sequence: >RG201403 representing NM_018358
Red=Cloning site Green=Tags(s)

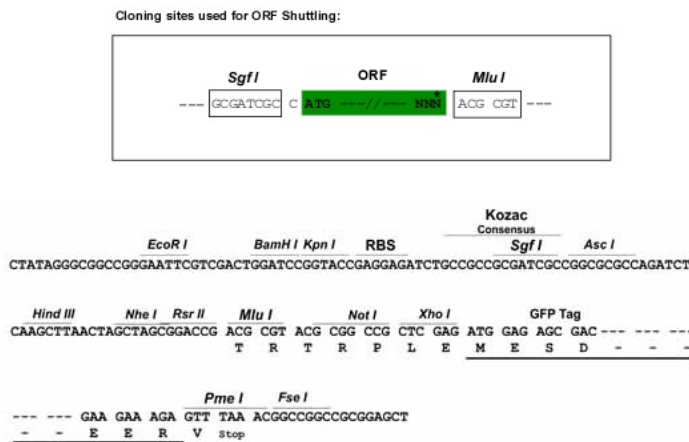
```

MATCAEILRSEFPEIDGQVFDYVTGVLHSGSADFESVDDLVEAVGELLQEVSGDSKDDAGIRAVCQRMYN
TLRLAEPQSQGNSQVLLDAPIQLSKITENYDCGTLKPLGLLKREQSSTVNAKKLEKAEARLKAKQEKRSEK
DTLKTSNPLVLEEASASQAGSRKESRLESSGKNKSYDVRIENFDVSFGDRVLLAGADVNLAWGRRYGLVG
RNGLGKTTLLKMLATRSLRVPAAHISLLHVEQEVAAGDDTPALQSVLESDSVREDLLRRERELTAQIAAGRA
EGSEAAELAEIYAKLEEIEADKAPARASVILAGLGFTPKMQQQPTREFSGGWRMLALARALFARPDLLL
LDEPTNMLDVRAILWLENYLQTPSTILVSHDRNFLNAIATDIIHLHSQRLDGYRGDFETFIKSKQERL
LNQQREYEAQQYRQHIQVFIDRFYRNANRASQVQSKLKMLEKLPVDPKSESEVVMKFPDGFKEKFSPP
ILQLDEVDFYYPKHVIFSRLSVSADLESRICVVGENGAGKSTMLKLLLDLAPVIRGIRHAHRNLKIGYF
SQHHEVQLDLNVSARELLARKFPRPEEYRHLGRYGISGELAMRPLASLGGQKSRVAFAMQMTMPCPN
FYILDEPTNHLDMETIEALGRALNNFRGGVILVSHDERFIRLVCRELWVCEGGGVTRVEGGFDQYRALLQ
EQFRREGFL
    
```

TRTRPLE - GFP Tag - V

Restriction Sites: SgfI-MluI

Cloning Scheme:



ACCN: NM_018358

ORF Size: 2127 bp

OTI Disclaimer: The molecular sequence of this clone aligns with the gene accession number as a point of reference only. However, individual transcript sequences of the same gene can differ through naturally occurring variations (e.g. polymorphisms), each with its own valid existence. This clone is substantially in agreement with the reference, but a complete review of all prevailing variants is recommended prior to use. [More info](#)

OTI Annotation: This clone was engineered to express the complete ORF with an expression tag. Expression varies depending on the nature of the gene.

Components: The ORF clone is ion-exchange column purified and shipped in a 2D barcoded Matrix tube containing 10ug of transfection-ready, dried plasmid DNA (reconstitute with 100 ul of water).

Reconstitution Method:

1. Centrifuge at 5,000xg for 5min.
2. Carefully open the tube and add 100ul of sterile water to dissolve the DNA.
3. Close the tube and incubate for 10 minutes at room temperature.
4. Briefly vortex the tube and then do a quick spin (less than 5000xg) to concentrate the liquid at the bottom.
5. Store the suspended plasmid at -20°C. The DNA is stable for at least one year from date of shipping when stored at -20°C.

RefSeq: [NM_018358.1](#), [NP_060828.1](#)

RefSeq Size: 2547 bp

RefSeq ORF: 2130 bp

Locus ID: 55324

UniProt ID: [Q9NUQ8](#)

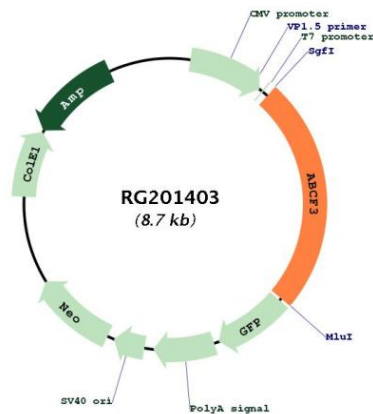
Cytogenetics: 3q27.1

Domains: ABC_tran, AAA

Protein Families: Druggable Genome

Gene Summary: This gene encodes a member of the ATP-binding cassette (ABC) transporter superfamily. ATP-binding cassette proteins transport various molecules across extra- and intracellular membranes. The protein encoded by this gene displays antiviral effect against flaviviruses. Alternatively spliced transcript variants encoding different isoforms have been found for this gene. [provided by RefSeq, May 2017]

Product images:



Circular map for RG201403