

## Product datasheet for **RG201360**

### UQCR11 (NM\_006830) Human Tagged ORF Clone

#### Product data:

**Product Type:** Expression Plasmids  
**Product Name:** UQCR11 (NM\_006830) Human Tagged ORF Clone  
**Tag:** TurboGFP  
**Symbol:** UQCR11  
**Synonyms:** 0710008D09Rik; QCR10; UQCR  
**Mammalian Cell Selection:** Neomycin  
**Vector:** pCMV6-AC-GFP (PS100010)  
**E. coli Selection:** Ampicillin (100 ug/mL)  
**ORF Nucleotide Sequence:** >RG201360 representing NM\_006830  
 Red=Cloning site Blue=ORF Green=Tags(s)

TTTTGTAATACGACTCACTATAGGGCGGCCGGAATTCGTCGACTGGATCCGGTACCGAGGAGATCTGCC  
GCC**CGATCGCC**

ATGGTGACCCGGTTCCTGGGCCACGCTACCGGGAGCTGGTCAAGAACTGGGTCCCAGCGCCTACACAT  
GGGGCGCTGTGGGCGCCGTGGGGCTGGTGTGGCCACCGATTGGCGGCTGATCCTGGACTGGGTACCTTA  
CATCAATGGCAAGTTTAAGAAGGATAAT

**ACGCGTACGCGGCCGCTCGAG** - GFP Tag - GTTTAA

**Protein Sequence:** >RG201360 representing NM\_006830  
 Red=Cloning site Green=Tags(s)

MVTRFLGPRYRELVKNWVPTAYTWGAVGAVGLVWATDWRLILDWVPYINGKFKKDN

**TRTRPLE** - GFP Tag - V

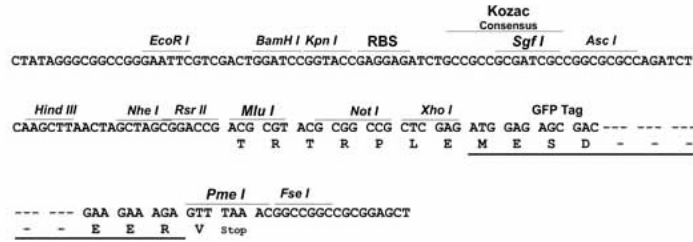
**Restriction Sites:** Sgfl-MluI



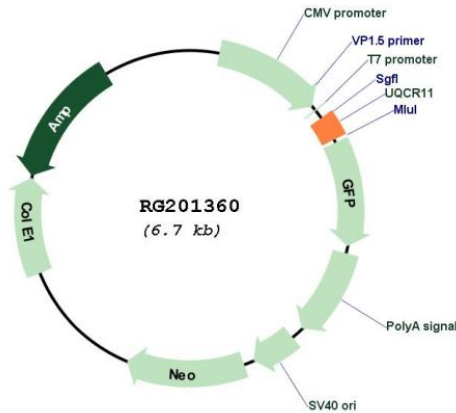
[View online »](#)

Cloning Scheme:

Cloning sites used for ORF Shutting:



Plasmid Map:



ACCN: NM\_006830

ORF Size: 168 bp

<b>OTI Disclaimer:</b>	The molecular sequence of this clone aligns with the gene accession number as a point of reference only. However, individual transcript sequences of the same gene can differ through naturally occurring variations (e.g. polymorphisms), each with its own valid existence. This clone is substantially in agreement with the reference, but a complete review of all prevailing variants is recommended prior to use. <a href="#">More info</a>
<b>OTI Annotation:</b>	This clone was engineered to express the complete ORF with an expression tag. Expression varies depending on the nature of the gene.
<b>Components:</b>	The ORF clone is ion-exchange column purified and shipped in a 2D barcoded Matrix tube containing 10ug of transfection-ready, dried plasmid DNA (reconstitute with 100 ul of water).
<b>Reconstitution Method:</b>	<ol style="list-style-type: none"><li>1. Centrifuge at 5,000xg for 5min.</li><li>2. Carefully open the tube and add 100ul of sterile water to dissolve the DNA.</li><li>3. Close the tube and incubate for 10 minutes at room temperature.</li><li>4. Briefly vortex the tube and then do a quick spin (less than 5000xg) to concentrate the liquid at the bottom.</li><li>5. Store the suspended plasmid at -20°C. The DNA is stable for at least one year from date of shipping when stored at -20°C.</li></ol>
<b>RefSeq:</b>	<a href="#">NM_006830.4</a>
<b>RefSeq Size:</b>	1335 bp
<b>RefSeq ORF:</b>	171 bp
<b>Locus ID:</b>	10975
<b>UniProt ID:</b>	<a href="#">O14957</a>
<b>Cytogenetics:</b>	19p13.3
<b>Protein Families:</b>	Transmembrane
<b>Protein Pathways:</b>	Alzheimer's disease, Cardiac muscle contraction, Huntington's disease, Metabolic pathways, Oxidative phosphorylation, Parkinson's disease
<b>Gene Summary:</b>	This gene encodes the smallest known component of the ubiquinol-cytochrome c reductase complex, which forms part of the mitochondrial respiratory chain. The encoded protein may function as a binding factor for the iron-sulfur protein in this complex. [provided by RefSeq, Oct 2009]