

## Product datasheet for **RG201356**

### **SIGIRR (NM\_021805) Human Tagged ORF Clone**

#### Product data:

Product Type:	Expression Plasmids
Product Name:	SIGIRR (NM_021805) Human Tagged ORF Clone
Tag:	TurboGFP
Symbol:	SIGIRR
Synonyms:	IL-1R8; TIR8
Mammalian Cell Selection:	Neomycin
Vector:	pCMV6-AC-GFP (PS100010)
E. coli Selection:	Ampicillin (100 ug/mL)
ORF Nucleotide Sequence:	>RG201356 representing NM_021805 Red=Cloning site Blue=ORF Green=Tags(s)

TTTTGTAATACGACTCACTATAGGGCGGCCGGAATTCGTCGACTGGATCCGGTACCGAGGAGATCTGCC  
GCC**CGATCGCC**

ATGCCAGGTGTCTGTGATAGGGCCCTGACTTCCTCTCCCGTCTGAAGACCAGGTGCTGAGGCCTGCCT  
TGGGCAGCTCAGTGGCTCTGAAGTGCACGGCTTGGGTAGTCTCTGGGCCCACTGCTCCCTGCCTCAGT  
CCAGTGGCTGAAAGACGGGCTTCCATTGGGAATTGGGGCCACTACAGCCTCCACGAGTACTCCTGGGTC  
AAGGCCAACCTGTCAGAGGTGCTTGTGTCCAGTGTCTGGGGTCAACGTGACCAGCACTGAAGTCTATG  
GGCCTTACCTGCTCCATCCAGAACATCAGCTTCTCCTCCTTCACTCTCAGAGAGCTGGCCCTACAAG  
CCAGTGGCTGCGGTGCTGGCCTCCCTCCTGGTCTGCTGGCCCTGCTGCTGGCCGCCCTGCTCTATGTC  
AAGTGGCTCTCAACGTGCTGCTCTGGTACCAGGACGCGTATGGGGAGGTGGAGATAAACGACGGGAAGC  
TCTACGACGCTACGTCTCTACAGCGACTGCCCGAGGACCGCAAGTTCGTGAACCTTATCCTAAAGCC  
GCAGCTGGAGCGGCTCGGGCTACAAGCTTCTCTGGACGACCGGACCTCCTGCCGCGCTGAGCCC  
TCCGCGACCTCTTGGTGAACCTGAGCCGCTGCCGACGCTCATCGTGGTGTCTTCGGACGCTTCTCTGA  
GCCGGCCTGGTGCAGCCACAGCTTCCGGGAGGGCCTGTGCCGGTGTGGAGCTCACCCGAGACCCAT  
CTTCATCACCTTCGAGGGCCAGAGGCGCACCCCGCGCACCCGGCGCTCCGCTGCTGCCAGCACCCGC  
CACCTGGTGACCTTGTCTCTGGAGGCCGGCTCCGTGACTCCTTCTCCGATTTTGGAAAGAAGTGC  
AGCTGGCCTGCCGCGGAAGGTGCGGTACAGCCGGTGAAGGAGACCCAGACGAGCTGCAGGACGA  
CAAGGACCCATGCTGATTCTTCGAGGCGAGTCCCTGAGGGCCGGCCCTGGACTCAGAGGTGGACCCG  
GACCTGAGGGGACCTGGGTGTCCGGGGCTGTTTTGGAGAGCCATCAGCTCCACCGCACACCAAGTGC  
GGGTCTCGCTGGGAGAGACCGGAGCAGCGAAGTGGAGTCTCGGATCTCGGCTCGGAACTACAGTGC  
CCGCACAGACTTCTACTGCTGTGTCGAAGGATGATG

AGCGGACCGACGCGTACGCGGCCGCTCGAG - GFP Tag - GTTTAA



[View online >](#)

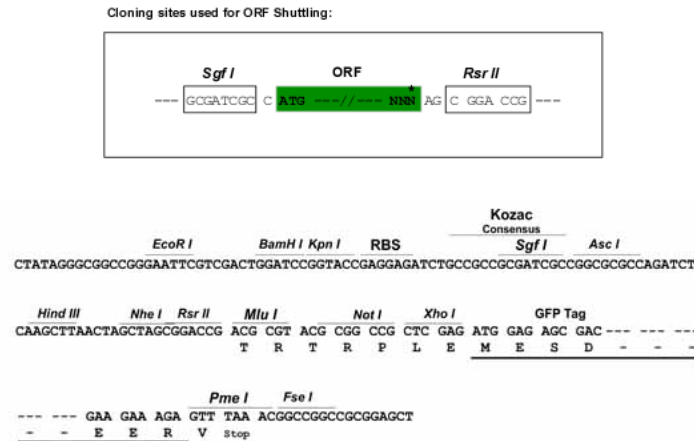
**Protein Sequence:** >RG201356 representing NM\_021805  
 Red=Cloning site Green=Tags(s)

MPGVCDRAPDFLSPSEDQVLRPALGSSVALNCTAWVVSGPHCSLPSVQWLKDGLPLGIGGHYSLHEYSWV  
 KANLSEVLVSSVLGVNVTSTEVYGAFTCSIQNISSFSTLQRAGPTSHVAAVLASLLVLLALLLAALLYV  
 KCRLNVLLWYQDAYGEVEINDGKLYDAYVSYSDCPEDRKVFVNFILKPQLERRRGYKFLDDRDLPRAP  
 SADLLVNL SRCRRLIVVLSDAFLSRAWCSHSFREGLCRLELTRRPIFITFEGQRRDPAHPALRLLRQHR  
 HLVTLLLRPGSVTPSSDFWKEVQLALPRKVRYRPFVEGDPQTQLQDDKDPMLILRGRVPEGRALDSEVDP  
 DPEGDLGVRGPVFGEPSAPPHTSGVSLGESRSSEVDVSDLGSRNYSARTDFYCLVSKDDM

SGP<sup>TRRRLE</sup> - GFP Tag - V

**Restriction Sites:** SgfI-RsrII

**Cloning Scheme:**



**ACCN:** NM\_021805

**ORF Size:** 1230 bp

**OTI Disclaimer:** The molecular sequence of this clone aligns with the gene accession number as a point of reference only. However, individual transcript sequences of the same gene can differ through naturally occurring variations (e.g. polymorphisms), each with its own valid existence. This clone is substantially in agreement with the reference, but a complete review of all prevailing variants is recommended prior to use. [More info](#)

**OTI Annotation:** This clone was engineered to express the complete ORF with an expression tag. Expression varies depending on the nature of the gene.

**Components:** The ORF clone is ion-exchange column purified and shipped in a 2D barcoded Matrix tube containing 10ug of transfection-ready, dried plasmid DNA (reconstitute with 100 ul of water).

**Reconstitution Method:**

1. Centrifuge at 5,000xg for 5min.
2. Carefully open the tube and add 100ul of sterile water to dissolve the DNA.
3. Close the tube and incubate for 10 minutes at room temperature.
4. Briefly vortex the tube and then do a quick spin (less than 5000xg) to concentrate the liquid at the bottom.
5. Store the suspended plasmid at -20°C. The DNA is stable for at least one year from date of shipping when stored at -20°C.

**RefSeq:** [NM\\_021805.1](#), [NP\\_068577.1](#)

**RefSeq Size:** 1695 bp

**RefSeq ORF:** 1233 bp

**Locus ID:** 59307

**UniProt ID:** [Q6IA17](#)

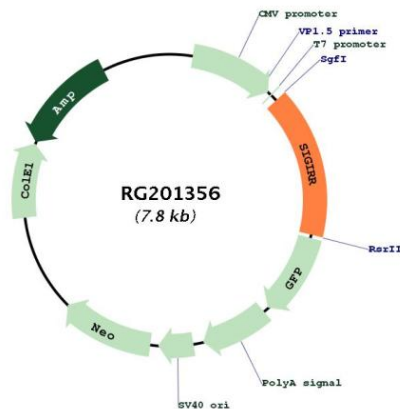
**Cytogenetics:** 11p15.5

**Domains:** TIR

**Protein Families:** Transcription Factors, Transmembrane

**Gene Summary:** Acts as a negative regulator of the Toll-like and IL-1R receptor signaling pathways. Attenuates the recruitment of receptor-proximal signaling components to the TLR4 receptor, probably through an TIR-TIR domain interaction with TLR4. Through its extracellular domain interferes with the heterodimerization of IL1R1 and IL1RAP.[UniProtKB/Swiss-Prot Function]

### Product images:



Circular map for RG201356