

Product datasheet for **RG201348**

EIF4EBP1 (NM_004095) Human Tagged ORF Clone

Product data:

Product Type: Expression Plasmids
Product Name: EIF4EBP1 (NM_004095) Human Tagged ORF Clone
Tag: TurboGFP
Symbol: EIF4EBP1
Synonyms: 4E-BP1; 4EBP1; BP-1; PHAS-I
Mammalian Cell Selection: Neomycin
Vector: pCMV6-AC-GFP (PS100010)
E. coli Selection: Ampicillin (100 ug/mL)
ORF Nucleotide Sequence: >RG201348 representing NM_004095
Red=Cloning site Blue=ORF Green=Tags(s)

TTTTGTAACTACGACTCACTATAGGGCGGCCGGAATTCGTCGACTGGATCCGGTACCGAGGAGATCTGCC
 GCCCGATCGCC

ATGTCCGGGGCAGCAGCTGCAGCCAGACCCCAAGCCGGGCCATCCCGCCACTCGCCGGGTGGTGCTCG
GCGACGGCGTGCAGCTCCCGCCGGGGACTACAGCACGACCCCGCGGCACGCTCTTCAGCACACCCC
GGGAGGTACCAGGATCATCTATGACCGGAAATTCCTGATGGAGTGTGGAACTCACCTGTGACCAAAACA
CCCCAAGGGATCTGCCACCATTCCGGGGTCAACAGCCCTTCCAGTGATGAGCCCCCATGGAAGCCA
GCCAGAGCCACCTGCGCAATAGCCAGAAGATAAGCGGGCGGGCGGTGAAGAGTCACAGTTGAGATGGA
CATT

ACGCGTACGCGGCCGCTCGAG - GFP Tag - GTTTAA

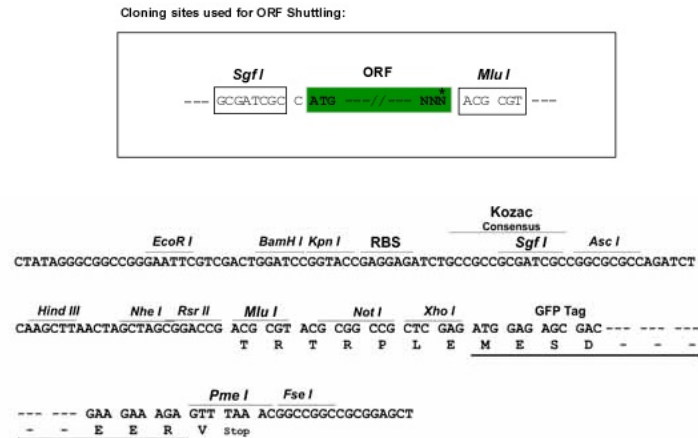
Protein Sequence: >RG201348 representing NM_004095
Red=Cloning site Green=Tags(s)

MSGSSSCQTPSRAIPATRRVVLGDGVQLPPGDYSTTPGGTLFSTTPGGTRIYYDRKFLMECRNSPVTKT
 PPRDLPTIPGVTSPSSDEPPMEASQSHLRNSPEDKRAGGEESQFEMDI

TRTRPLE - GFP Tag - V

Restriction Sites: Sgfl-MluI


[View online »](#)

Cloning Scheme:


ACCN: NM_004095

ORF Size: 354 bp

OTI Disclaimer: Due to the inherent nature of this plasmid, standard methods to replicate additional amounts of DNA in *E. coli* are highly likely to result in mutations and/or rearrangements. Therefore, OriGene does not guarantee the capability to replicate this plasmid DNA. Additional amounts of DNA can be purchased from OriGene with batch-specific, full-sequence verification at a reduced cost. Please contact our customer care team at custsupport@origene.com or by calling 301.340.3188 option 3 for pricing and delivery.

The molecular sequence of this clone aligns with the gene accession number as a point of reference only. However, individual transcript sequences of the same gene can differ through naturally occurring variations (e.g. polymorphisms), each with its own valid existence. This clone is substantially in agreement with the reference, but a complete review of all prevailing variants is recommended prior to use. [More info](#)

OTI Annotation: This clone was engineered to express the complete ORF with an expression tag. Expression varies depending on the nature of the gene.

Components: The ORF clone is ion-exchange column purified and shipped in a 2D barcoded Matrix tube containing 10ug of transfection-ready, dried plasmid DNA (reconstitute with 100 ul of water).

Reconstitution Method:

1. Centrifuge at 5,000xg for 5min.
2. Carefully open the tube and add 100ul of sterile water to dissolve the DNA.
3. Close the tube and incubate for 10 minutes at room temperature.
4. Briefly vortex the tube and then do a quick spin (less than 5000xg) to concentrate the liquid at the bottom.
5. Store the suspended plasmid at -20°C. The DNA is stable for at least one year from date of shipping when stored at -20°C.

RefSeq: [NM_004095.4](#)

RefSeq Size: 895 bp

RefSeq ORF: 357 bp

Locus ID: 1978

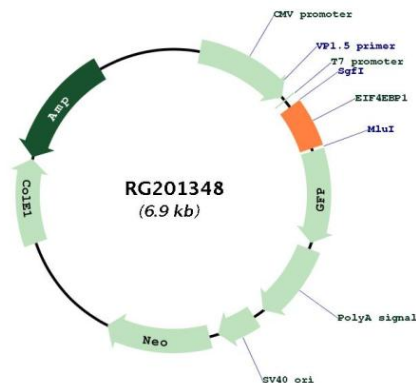
UniProt ID: [Q13541](#)

Cytogenetics: 8p11.23

Protein Pathways: Acute myeloid leukemia, ErbB signaling pathway, Insulin signaling pathway, mTOR signaling pathway

Gene Summary: This gene encodes one member of a family of translation repressor proteins. The protein directly interacts with eukaryotic translation initiation factor 4E (eIF4E), which is a limiting component of the multisubunit complex that recruits 40S ribosomal subunits to the 5' end of mRNAs. Interaction of this protein with eIF4E inhibits complex assembly and represses translation. This protein is phosphorylated in response to various signals including UV irradiation and insulin signaling, resulting in its dissociation from eIF4E and activation of mRNA translation. [provided by RefSeq, Jul 2008]

Product images:



Circular map for RG201348