

Product datasheet for **RG201347**

IST1 (NM_014761) Human Tagged ORF Clone

Product data:

Product Type:	Expression Plasmids
Product Name:	IST1 (NM_014761) Human Tagged ORF Clone
Tag:	TurboGFP
Symbol:	IST1
Synonyms:	CHMP8; OLC1
Mammalian Cell Selection:	Neomycin
Vector:	pCMV6-AC-GFP (PS100010)
E. coli Selection:	Ampicillin (100 ug/mL)
ORF Nucleotide Sequence:	>RG201347 representing NM_014761 Red=Cloning site Blue=ORF Green=Tags(s)

TTTTGTAATACGACTCACTATAGGGCGGCCGGAATTCGTCGACTGGATCCGGTACCGAGGAGATCTGCC
GCC**CGATCGCC**

ATGCTGGGCTCTGGATTTAAAGCTGAGCGCTTAAGAGTGAATTTGAGATTAGTCATAAATCGCCTTAAAC
TATTGGAGAAAAAGAAACGGAAGTGGCCAGAAAGCAAGGAAGGAGATTGCTGACTATCTGGCTGCTGG
GAAAGATGAACGAGCTCGGATCCGTGTGGAGCACATTATCCGGGAAGACTACCTCGTGGAGGCCATGGAG
ATCCTGGAGCTGTACTGTGACCTGCTGCTGGCTCGTTTGGCCTTATCCAGTCTATGAAGGAACTAGATT
CTGGTCTGGCTGAATCTGTGTCTACATTGATCTGGGCTGCTCCTCGACTCCAGTCAGAAGTGGCTGAGTT
GAAAATAGTTGCTGATCAGCTCTGTGCCAAGTATAGCAAGGAATATGGCAAGCTATGTAGGACCAACCAG
ATTGGAAGTGTGAATGACAGGCTAATGCACAAGCTGAGTGTGGAAGCCCCACCCAAAATCCTGGTGGAGA
GATACCTGATTGAAATTGCAAAGAATTACAACGTACCCTATGAACCTGACTCTGTGGTCATGGCAGAAGC
TCCTCCTGGGGTAGAGACAGATCTTATTGATGTTGGATTCACAGATGATGTGAAGAAAGGAGGCCCTGGA
AGAGGAGGGAGTGGTGGCTTACAGCACCAAGTGGTGGACCTGATGGAACGGTGCCAATGCCCATGCCCA
TGCCCATGCCTATGCCATCTGCAAATACGCCTTCTCATATCCACTGCCAAAGGGACCATCAGATTTCAA
TGGACTGCCAATGGGACTTATCAGGCCTTCCCAATATTCATCCACCTCAGATACCAGCAACTCCCCCA
TCGTATGAATCTATGACATTAATGCTGATAAGAATATCTCTTCTGCACAGATTGTTGGTCTGGACCCAA
GCCAGAAGCCTCTGCAAAGCTTCCCTCCAGACCTGCAGATAAATGACAACCTTTGTCTACCAGAGTTG
CCATCTGTGCCAGACACACTACCAACTGCATCTGCTGGTCCAGCACCTCAGCATCTGAAGACATTGACT
TTGATGATCTTTCCCGGAGGTTTGAAGAGC

ACCGTACGCGGCCGCTCGAG - GFP Tag - GTTTAA



[View online »](#)

Protein Sequence: >RG201347 representing NM_014761
 Red=Cloning site Green=Tags(s)

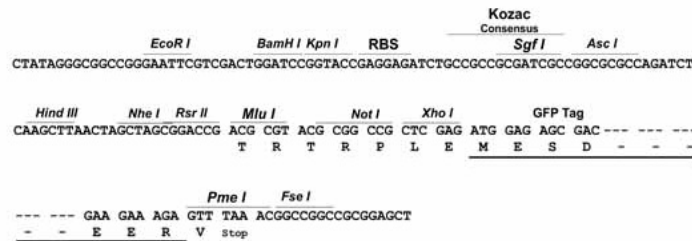
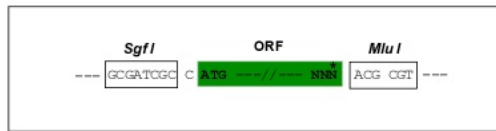
MLGSGFKAERLRVNLRLVINRLKLEKKKTELAQKARKEIADYLAAGKDERARIRVEHI IREDYLVEAME
 ILELYCDLLLARFGLIQSMKELDSGLAESVSTLIWAAPRLQSEVAELKIVADQLCAKYSKEYGKLCRTNQ
 IGTVNDRLMHKLSVEAPPKILVERYLIEIAKNYNVPYEPDSVVMVAEAPPGVETDLIDVGFDDVKKGGPG
 RGGSGGFTAPVGGPDGTVPMP
 SYESMTLMIRISLLHRLLVLDPSQKPLQSFPLDLQITMTTLSYQSCHLCQTHYQLHLLVPAPQHLKTLT
 LMIFPGLLKS

TRTRPLE - GFP Tag - V

Restriction Sites: SgfI-MluI

Cloning Scheme:

Cloning sites used for ORF Shuttling:



ACCN: NM_014761

ORF Size: 1080 bp

OTI Disclaimer: The molecular sequence of this clone aligns with the gene accession number as a point of reference only. However, individual transcript sequences of the same gene can differ through naturally occurring variations (e.g. polymorphisms), each with its own valid existence. This clone is substantially in agreement with the reference, but a complete review of all prevailing variants is recommended prior to use. [More info](#)

OTI Annotation: This clone was engineered to express the complete ORF with an expression tag. Expression varies depending on the nature of the gene.

Components: The ORF clone is ion-exchange column purified and shipped in a 2D barcoded Matrix tube containing 10ug of transfection-ready, dried plasmid DNA (reconstitute with 100 ul of water).

Reconstitution Method:

1. Centrifuge at 5,000xg for 5min.
2. Carefully open the tube and add 100ul of sterile water to dissolve the DNA.
3. Close the tube and incubate for 10 minutes at room temperature.
4. Briefly vortex the tube and then do a quick spin (less than 5000xg) to concentrate the liquid at the bottom.
5. Store the suspended plasmid at -20°C. The DNA is stable for at least one year from date of shipping when stored at -20°C.

RefSeq: [NM_014761.4](#)

RefSeq Size: 2377 bp

RefSeq ORF: 1083 bp

Locus ID: 9798

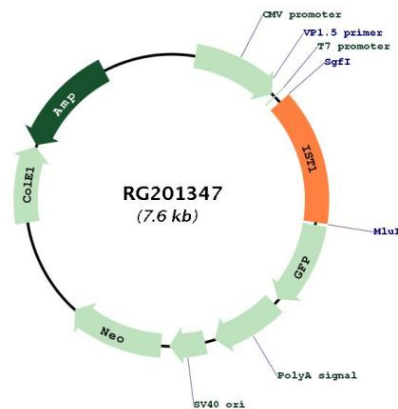
UniProt ID: [P53990](#)

Cytogenetics: 16q22.2

Domains: DUF292

Gene Summary: This gene encodes a protein with MIT-interacting motifs that interacts with components of endosomal sorting complexes required for transport (ESCRT). ESCRT functions in vesicle budding, such as that which occurs during membrane abscission in cytokinesis. There is a pseudogene for this gene on chromosome 19. Alternatively spliced transcript variants encoding multiple isoforms have been observed for this gene. [provided by RefSeq, Aug 2012]

Product images:



Circular map for RG201347