

## Product datasheet for **RG201327**

### **PAMM (FAM213A) (NM\_032333) Human Tagged ORF Clone**

#### **Product data:**

**Product Type:** Expression Plasmids  
**Product Name:** PAMM (FAM213A) (NM\_032333) Human Tagged ORF Clone  
**Tag:** TurboGFP  
**Symbol:** PAMM  
**Synonyms:** Adrx; C10orf58; FAM213A; PAMM  
**Mammalian Cell Selection:** Neomycin  
**Vector:** pCMV6-AC-GFP (PS100010)  
**E. coli Selection:** Ampicillin (100 ug/mL)  
**ORF Nucleotide Sequence:** >RG201327 representing NM\_032333  
**Red=Cloning site Blue=ORF Green=Tags(s)**

TTTTGTAATACGACTCACTATAGGGCGGCCGGAATTCGTCGACTGGATCCGGTACCGAGGAGATCTGCC  
GCC**CGATCGCC**

ATGTCTTCTCCAGGACCCAAGTTTCTCACCATGGGGATGTGGTCCATTGGTGCAGGAGCCCTGGGG  
CTGCTGCCTTGGCATTGCTGCTTGCCAACACAGACGTGTTTCTGTCCAAGCCCCAGAAAGCGCCCTGGA  
GTACCTGGAGGATATAGACCTGAAACACTGGAGAAGGAACCAAGGACTTCAAAGCAAAGGAGCTATGG  
GAAAAAATGGAGCTGTGATTATGGCCGTGCGGAGGCCAGGCTGTTTCTCTGTGAGAGGAAGCTGCGG  
ATCTGTCTCCCTGAAAAGCATGTTGGACCAGCTGGGCGTCCCCCTCTATGCAGTGGTAAAGGAGCACAT  
CAGGACTGAAGTGAAGGATTTCCAGCCTTATTTCAAAGGAGAAATCTTCTGGATGAAAAGAAAAAGTTC  
TATGGTCCACAAAGCGGAAGATGATGTTTATGGGATTTATCCGTCTGGGAGTGTGGTACAACCTTCTCC  
GAGCCTGGAACGGAGGCTTCTCTGGAAACCTGGAAGGAGAAGGCTTCATCCTTGGGGGAGTTTTCTGGT  
GGGATCAGGAAAGCAGGGCATTCTTCTTGGACCCGAGAAAAAGAATTTGGAGACAAAGTAAACCTACTT  
TCTGTTCTGGAAGCTGCTAAGATGATCAAACCACAGACTTTGGCCTCAGAGAAAAA

**ACGCGTACGCGGCCGCTCGAG** - GFP Tag - GTTTAA



[View online »](#)

**Protein Sequence:** >RG201327 representing NM\_032333  
 Red=Cloning site Green=Tags(s)

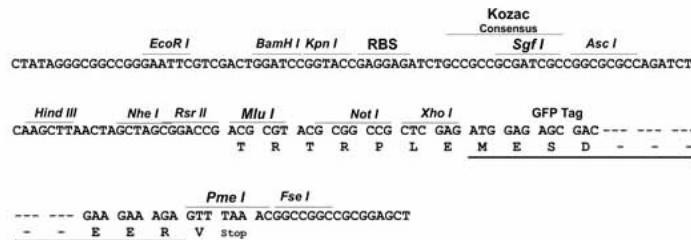
```
MSFLQDPSFFTMGMWSIGAGALGAAALALLANTDVFLSKPQKALEYLEDIDLKTLEKEPRTFKAKELW
EKNGAVIMAVRRPGCFLCREEADLSSLKSMQLDQLGVPL YAVVKEHIRTEVKDFQPYFKGEIFLDEKKKF
YGPQRRKMMFMGFI RLG VVYNFFRAWNGGFSGNLEGEGLGGVFVVGSGKQGILLEHREKEFGDKVNLL
SVLEAAKMIKPQTLASEKK
```

TRTRPLE - GFP Tag - V

**Restriction Sites:** SgfI-MluI

**Cloning Scheme:**

Cloning sites used for ORF Shuttling:



**ACCN:** NM\_032333

**ORF Size:** 687 bp

**OTI Disclaimer:** The molecular sequence of this clone aligns with the gene accession number as a point of reference only. However, individual transcript sequences of the same gene can differ through naturally occurring variations (e.g. polymorphisms), each with its own valid existence. This clone is substantially in agreement with the reference, but a complete review of all prevailing variants is recommended prior to use. [More info](#)

**OTI Annotation:** This clone was engineered to express the complete ORF with an expression tag. Expression varies depending on the nature of the gene.

**Components:** The ORF clone is ion-exchange column purified and shipped in a 2D barcoded Matrix tube containing 10ug of transfection-ready, dried plasmid DNA (reconstitute with 100 ul of water).

**Reconstitution Method:**

1. Centrifuge at 5,000xg for 5min.
2. Carefully open the tube and add 100ul of sterile water to dissolve the DNA.
3. Close the tube and incubate for 10 minutes at room temperature.
4. Briefly vortex the tube and then do a quick spin (less than 5000xg) to concentrate the liquid at the bottom.
5. Store the suspended plasmid at -20°C. The DNA is stable for at least one year from date of shipping when stored at -20°C.

**RefSeq:** [NM\\_032333.5](#)

**RefSeq Size:** 1690 bp

**RefSeq ORF:** 690 bp

**Locus ID:** 84293

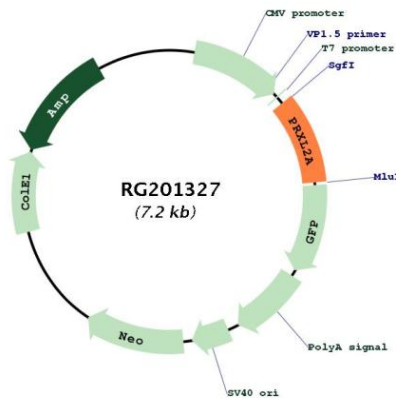
**UniProt ID:** [Q9BRX8](#)

**Cytogenetics:** 10q23.1

**Protein Families:** Secreted Protein, Transmembrane

**Gene Summary:** Involved in redox regulation of the cell (PubMed:26438880, PubMed:19951071). Acts as an antioxidant (PubMed:19951071, PubMed:26438880). Inhibits TNFSF11-induced NFKB1 and JUN activation and osteoclast differentiation (PubMed:19951071). May affect bone resorption and help to maintain bone mass (PubMed:19951071). Acts as a negative regulator of macrophage-mediated inflammation by inhibiting macrophage production of inflammatory cytokines, probably through suppression of the MAPK signaling pathway (PubMed:26438880). [UniProtKB/Swiss-Prot Function]

**Product images:**



Circular map for RG201327