

Product datasheet for **RG201322**

IFRD2 (NM_006764) Human Tagged ORF Clone

Product data:

Product Type:	Expression Plasmids
Product Name:	IFRD2 (NM_006764) Human Tagged ORF Clone
Tag:	TurboGFP
Symbol:	IFRD2
Synonyms:	IFNRP; SKMc15; SM15
Mammalian Cell Selection:	Neomycin
Vector:	pCMV6-AC-GFP (PS100010)
E. coli Selection:	Ampicillin (100 ug/mL)
ORF Nucleotide Sequence:	>RG201322 representing NM_006764 Red=Cloning site Blue=ORF Green=Tags(s)

TTTTGTAATACGACTCACTATAGGGCGGCCGGAATTCGTCGACTGGATCCGGTACCGAGGAGATCTGCC
GCC**CGATCGCC**

ATGCTCGCGCCCGTAAGGGCAACACGCTCCGGAAGGGTGGTCAGCGCCGTGGAGGAGGTGCCCGGAGCA
GTGCCAAGCTGACTCGGGTTCCAGTGACGATGAGGCAGCCAGTGAGGCCCGCAGCACCGCCAGTGAATG
CCCCAGCCTTCTCAGCACCCTGCAGAGGACAGCCTTGGGGGGATGTCGTGGATGAGCAGGGCCAGCAG
GAAGACCTTGAGGAAAAGCTGAAGGAGTATGTGGACTGTCTCACAGACAAGAGTGCCAAGACCCGGCAGG
GTGCTCTTGAGAGCCTGCGCCTGGCCCTAGCGTCCCGCCTACTCCCCGACTTCTTGCTGGAGCGCCGCT
CAGCCTAGCCGATGCCCTGGAAAAGTGCCCTCAAGAAAGGGAAGGGCGAGGAACAAGCCCTGGCTGCTGCT
GTGCTAGGCCCTGCTGCGTGCAGCTGGGCCCTGGACCTAAGGGTGAGGAGCTGTTTACAGCCTGCAGC
CTCTGCTGGTCTCTGTGCTCAGTGACAGCACAGCTAGCCCTGCTGCCCGCTCCACTGTGCTTCTGCCCT
TGGCCTGGGCTGCTACGTGGCTGCCGCTGACATCCAGGACCTGGTCTCTTGCTTGCCTGCTTAGAAAGT
GTTTTAGCCGGTCTATGGCTTGGGGGCGAGCTCCACAAGTCTGTGGTTCTGCCAGCCTGCACGGCC
TGCTCTGCTGCCCTGCAGGCTGGGCATTGTGCTCACCATCTGCCCTAGCACCCAAATCAGCCACAT
CCTTGACAGGCAGCTGCCCGGCTGCCCGAGCTTTGTCCAGTAAAAGTGTGAACCTGCGGATCGCTGCC
GGTGAAACCATGCACTGCTCTTTGAGCTTCCCGGGACCTTGAGGAGGAGTTTGTTCAGGAGCATGG
AGGCCCTCTGCAGTGTCTGCGCACTCTGGCCACTGACAGTAACAAGTACCGTGCCAAGGCTGATCGTCG
GCGCCAGCGCTCTACTTCCGCGCCGTGCTGCACTCCGTGGAGGGCGGTGAATGCGAAGAAGAGATAGTG
CGCTTCGGCTTTGAGGTGCTCTACATGGACAGCTGGGCTCGGCACCGGATCTACGCTGCCTTCAAGGAAG
TGCTGGGTTCCGGCATGCACCACCCTCCAGAACAATGAGCTACTCCGTGACATCTTTGGCCTGGGCC
TGTGCTTTGCTGGATGCCACTGCCCTGAAGGCCTGCAAGGTTCCACGCTTTGAGAAGCACCTGTACAAT
GCTGCTGCCTTCAAAGCCCGGACCAAGGCTCGAAGCCGTGTGCGGGACAAGCGGGCAGACATCCTG

ACGCGTACGCGGCCGCTCGAG - GFP Tag - GTTTAA



[View online »](#)

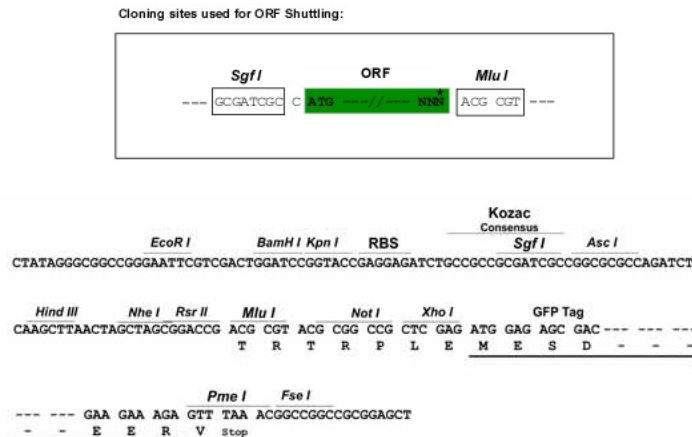
Protein Sequence: >RG201322 representing NM_006764
Red=Cloning site Green=Tags(s)

MPRARKGNTLRKGGQRRGGGARSSAQADSGSSDDEAASEARSTASECPSLLSTTAEDSLGGDVVDEQGQQ
 EDLEEKLKEYVDCLTDKSAKTRQGALESLRLALASRLLPDFLLERRLLADALEKCLKKKGEEQALAAA
 VLGLLCVQLGPGPKGEELFHSLQPLLVSVLSDESTASPAARLHCASALGLGCYVAAADIQDLVSCLACLES
 VFSRFYGLGGSSTSPVVPASLHGLLSAALQAWALLLTICPSTQISHILDRQLPRLPQLLSSESVNLRIAA
 GETIALLFELARDLEEEFVYEDMEALCSVLRTLATDSNKYRAKADRRRQRSTFRVAVLHSEGGEECEEEIV
 RFGFEVLVYMSWARHRIYAAFKEVLGSGMHHLQNNELLRDIFGLGPVLLLDATAKACKVPRFEKHLYN
 AAFAFKARTKARSVRDKRADIL

TRTRPLE - GFP Tag - V

Restriction Sites: SgfI-MluI

Cloning Scheme:



ACCN: NM_006764

ORF Size: 1326 bp

OTI Disclaimer: The molecular sequence of this clone aligns with the gene accession number as a point of reference only. However, individual transcript sequences of the same gene can differ through naturally occurring variations (e.g. polymorphisms), each with its own valid existence. This clone is substantially in agreement with the reference, but a complete review of all prevailing variants is recommended prior to use. [More info](#)

OTI Annotation: This clone was engineered to express the complete ORF with an expression tag. Expression varies depending on the nature of the gene.

Components: The ORF clone is ion-exchange column purified and shipped in a 2D barcoded Matrix tube containing 10ug of transfection-ready, dried plasmid DNA (reconstitute with 100 ul of water).

- Reconstitution Method:**
1. Centrifuge at 5,000xg for 5min.
 2. Carefully open the tube and add 100ul of sterile water to dissolve the DNA.
 3. Close the tube and incubate for 10 minutes at room temperature.
 4. Briefly vortex the tube and then do a quick spin (less than 5000xg) to concentrate the liquid at the bottom.
 5. Store the suspended plasmid at -20°C. The DNA is stable for at least one year from date of shipping when stored at -20°C.

RefSeq: [NM_006764.3](#), [NP_006755.3](#)

RefSeq Size: 2045 bp

RefSeq ORF: 1329 bp

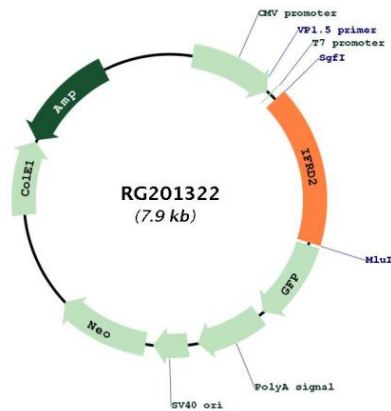
Locus ID: 7866

UniProt ID: [Q12894](#)

Cytogenetics: 3p21.31

Domains: IFRD_C, IFRD

Product images:



Circular map for RG201322