

Product datasheet for **RG201299**

RPS20 (NM_001023) Human Tagged ORF Clone

Product data:

Product Type: Expression Plasmids
Product Name: RPS20 (NM_001023) Human Tagged ORF Clone
Tag: TurboGFP
Symbol: RPS20
Synonyms: S20; uS10
Mammalian Cell Selection: Neomycin
Vector: pCMV6-AC-GFP (PS100010)
E. coli Selection: Ampicillin (100 ug/mL)
ORF Nucleotide Sequence: >RG201299 representing NM_001023
 Red=Cloning site Blue=ORF Green=Tags(s)

TTTTGTAATACGACTCACTATAGGGCGGCCGGAATTCGTCGACTGGATCCGGTACCGAGGAGATCTGCC
 GCC**CGATCGCC**

ATGGCTTTTAAGGATACCGAAAAACCCCGTGGAGCCGGAGGTGGCAATTCACCGAATTCGAATCACCC
 TAACAAGCCGCAACGTAATAATCCTTGAAAAGGTGTGTGCTGACTTGATAAGAGGCGCAAAAAGAA
 TCTCAAAGTGAAAGGACCAGTTCGAATGCCTACCAAGACTTTGAGAATCACTACAAGAAAACTCCTTGT
 GGTGAAGTTCTAAGACGTGGGATCGTTCCAGATGAGAATCACAAGCGACTCATTGACTTGCACAGTC
 CTTCTGAGATTGTTAAGCAGATTACTTCCATCAGTATTGAGCCAGGAGTTGAGGTGGAAGTCACCATTCG
 AGATGCT

ACGCGTACGCGGCCGCTCGAG - GFP Tag - GTTTAA

Protein Sequence: >RG201299 representing NM_001023
 Red=Cloning site Green=Tags(s)

MAFKDTGKTPVEPEVAIHRIRITLTSRNVKSLEKVCADLIRGAKEKNLKVKGPVRMPTKTLRITTRKTPC
 GEGSKTWDRFQMRIHKRLIDLHSPSEIVKQITSISIEPGVEVEVTIADA

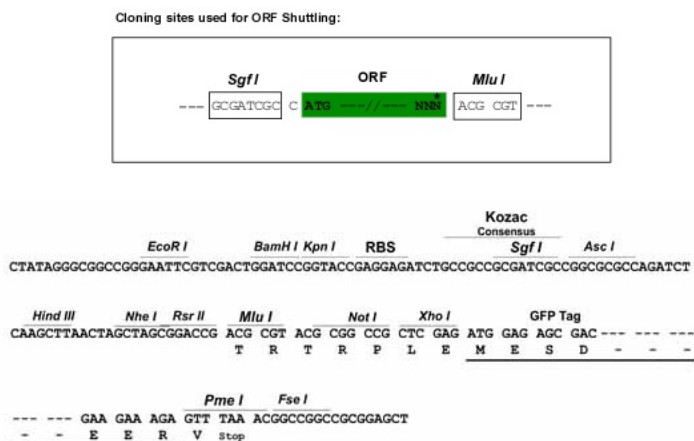
TRTRPLE - GFP Tag - V

Restriction Sites: Sgfl-MluI

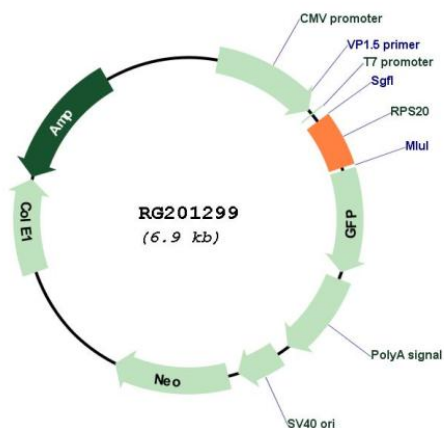


[View online »](#)

Cloning Scheme:



Plasmid Map:



ACCN:

NM_001023

ORF Size:

357 bp

OTI Disclaimer:

The molecular sequence of this clone aligns with the gene accession number as a point of reference only. However, individual transcript sequences of the same gene can differ through naturally occurring variations (e.g. polymorphisms), each with its own valid existence. This clone is substantially in agreement with the reference, but a complete review of all prevailing variants is recommended prior to use. [More info](#)

OTI Annotation:	This clone was engineered to express the complete ORF with an expression tag. Expression varies depending on the nature of the gene.
Components:	The ORF clone is ion-exchange column purified and shipped in a 2D barcoded Matrix tube containing 10ug of transfection-ready, dried plasmid DNA (reconstitute with 100 ul of water).
Reconstitution Method:	<ol style="list-style-type: none">1. Centrifuge at 5,000xg for 5min.2. Carefully open the tube and add 100ul of sterile water to dissolve the DNA.3. Close the tube and incubate for 10 minutes at room temperature.4. Briefly vortex the tube and then do a quick spin (less than 5000xg) to concentrate the liquid at the bottom.5. Store the suspended plasmid at -20°C. The DNA is stable for at least one year from date of shipping when stored at -20°C.
RefSeq:	NM_001023.4
RefSeq Size:	857 bp
RefSeq ORF:	360 bp
Locus ID:	6224
UniProt ID:	P60866
Cytogenetics:	8q12.1
Domains:	Ribosomal_S10
Protein Pathways:	Ribosome
Gene Summary:	Ribosomes, the organelles that catalyze protein synthesis, consist of a small 40S subunit and a large 60S subunit. Together these subunits are composed of 4 RNA species and approximately 80 structurally distinct proteins. This gene encodes a ribosomal protein that is a component of the 40S subunit. The protein belongs to the S10P family of ribosomal proteins. It is located in the cytoplasm. This gene is co-transcribed with the small nucleolar RNA gene U54, which is located in its second intron. As is typical for genes encoding ribosomal proteins, there are multiple processed pseudogenes of this gene dispersed through the genome. Two transcript variants encoding different isoforms have been identified for this gene. [provided by RefSeq, Apr 2009]