

Product datasheet for **RG201267**

ATP6V1E1 (NM_001696) Human Tagged ORF Clone

Product data:

Product Type: Expression Plasmids
Product Name: ATP6V1E1 (NM_001696) Human Tagged ORF Clone
Tag: TurboGFP
Symbol: ATP6V1E1
Synonyms: ARCL2C; ATP6E; ATP6E2; ATP6V1E; P31; Vma4
Mammalian Cell Selection: Neomycin
Vector: pCMV6-AC-GFP (PS100010)
E. coli Selection: Ampicillin (100 ug/mL)
ORF Nucleotide Sequence: >RG201267 representing NM_001696
Red=Cloning site Blue=ORF Green=Tags(s)

TTTTGTAATACGACTCACTATAGGGCGGCCGGAATTCGTCGACTGGATCCGGTACCGAGGAGATCTGCC
GCC**CGATCGCC**

ATGGCTCTCAGCGATGCTGACGTGCAAAAGCAGATAAAGCATATGATGGCTTTCATTGAACAAGAAGCCA
ATGAGAAAGCAGAAGAAATAGATGCAAAGGCAGAAGAAGAGTTCAACATAGAGAAAGGTCGGCTTGTGCA
AACCCAAAGACTAAAGATTATGGAATATTATGAGAAGAAAGAGAAACAGATTGAGCAGCAGAAGAAAATT
CAGATGTCCAATTTGATGAATCAAGCGAGACTCAAAGTCCTCAGAGCAAGAGATGACCTTATCACAGACC
TACTAAATGAAGCAAAACAGAGACTCAGCAAGGTGGTAAAAGATACAACCAGGTACCAAGTCTGCTGGA
TGGACTGGTTCTCCAGGTTTGTACCAGTTGCTGGAGCCCGAATGATTGTTTCGTTGCAGGAAACAAGAT
TTCCCTCTGGTAAAGGCTGCAGTGCAGAAGGCAATTCCTATGTACAAAATTGCCACCAAAAACGATGTTG
ATGTCCAAATTGACCAGGAGTCTACCTGCCTGAAGACATAGCTGGTGGAGTTGAGATCTATAATGGAGA
TCGTAAAATAAAGGTTTCCAACACCCTGGAAAGCCGGCTGGATCTCATAGCCCAGCAGATGATGCCAGAA
GTCCGGGGAGCCTTGTGGTGCAAATGCCAACAGGAAGTTTTGGAC

ACGCGTACGCGGCCGCTCGAG - GFP Tag - GTTTAA



[View online »](#)

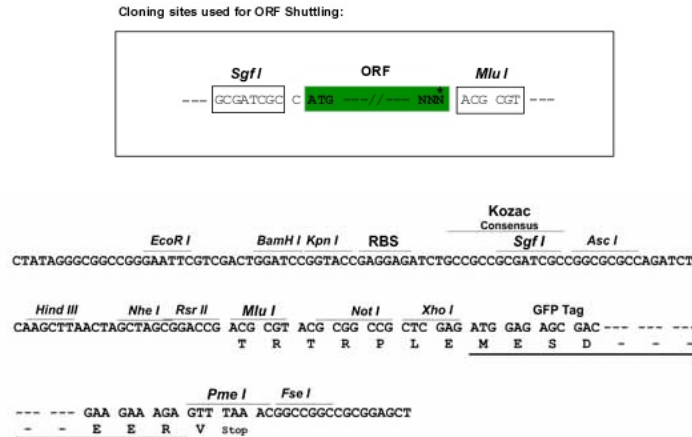
Protein Sequence: >RG201267 representing NM_001696
 Red=Cloning site Green=Tags(s)

MALSDADVQKQIKHMMAFIEQEANEKAEIDAKAEFEFNIEKGRVLVQTQRLKIMEYYEKKEKQIEQQKKI
 QMSNLMNQARLKVLRRDDLITDLLNEAKQRLSKVVKDTTRYQVLLDGLVLQGLYQLLEPRMIVRCRKQD
 FPLVKAAYQKAIPMYKIATKNDVDVQIDQESYLPEDIAGGVEIYNGDRKIKVSNTLESRLDLIAQQMMPE
 VRGALFGANANRKFLLD

TRTRPLE - GFP Tag - V

Restriction Sites: SgfI-MluI

Cloning Scheme:



ACCN: NM_001696

ORF Size: 678 bp

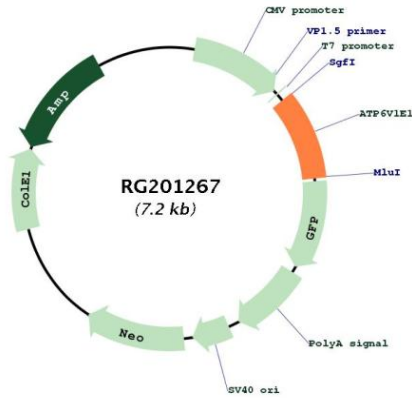
OTI Disclaimer: The molecular sequence of this clone aligns with the gene accession number as a point of reference only. However, individual transcript sequences of the same gene can differ through naturally occurring variations (e.g. polymorphisms), each with its own valid existence. This clone is substantially in agreement with the reference, but a complete review of all prevailing variants is recommended prior to use. [More info](#)

OTI Annotation: This clone was engineered to express the complete ORF with an expression tag. Expression varies depending on the nature of the gene.

Components: The ORF clone is ion-exchange column purified and shipped in a 2D barcoded Matrix tube containing 10ug of transfection-ready, dried plasmid DNA (reconstitute with 100 ul of water).

Reconstitution Method:	<ol style="list-style-type: none">1. Centrifuge at 5,000xg for 5min.2. Carefully open the tube and add 100ul of sterile water to dissolve the DNA.3. Close the tube and incubate for 10 minutes at room temperature.4. Briefly vortex the tube and then do a quick spin (less than 5000xg) to concentrate the liquid at the bottom.5. Store the suspended plasmid at -20°C. The DNA is stable for at least one year from date of shipping when stored at -20°C.
RefSeq:	NM_001696.4
RefSeq Size:	1406 bp
RefSeq ORF:	681 bp
Locus ID:	529
UniProt ID:	P36543
Cytogenetics:	22q11.21
Domains:	vATP-synt_E
Protein Pathways:	Epithelial cell signaling in Helicobacter pylori infection, Metabolic pathways, Oxidative phosphorylation, Vibrio cholerae infection
Gene Summary:	<p>This gene encodes a component of vacuolar ATPase (V-ATPase), a multisubunit enzyme that mediates acidification of eukaryotic intracellular organelles. V-ATPase dependent organelle acidification is necessary for such intracellular processes as protein sorting, zymogen activation, receptor-mediated endocytosis, and synaptic vesicle proton gradient generation. V-ATPase is composed of a cytosolic V1 domain and a transmembrane V0 domain. The V1 domain consists of three A, three B, and two G subunits, as well as a C, D, E, F, and H subunit. The V1 domain contains the ATP catalytic site. This gene encodes alternate transcriptional splice variants, encoding different V1 domain E subunit isoforms. Pseudogenes for this gene have been found in the genome. [provided by RefSeq, Jul 2008]</p>

Product images:



Circular map for RG201267