

Product datasheet for **RG201245**

CD98 (SLC3A2) (NM_001013251) Human Tagged ORF Clone

Product data:

Product Type:	Expression Plasmids
Product Name:	CD98 (SLC3A2) (NM_001013251) Human Tagged ORF Clone
Tag:	TurboGFP
Symbol:	CD98
Synonyms:	4F2; 4F2HC; 4T2HC; CD98; CD98HC; MDU1; NACAE
Mammalian Cell Selection:	Neomycin
Vector:	pCMV6-AC-GFP (PS100010)
E. coli Selection:	Ampicillin (100 ug/mL)



[View online »](#)

ORF Nucleotide Sequence:

>RG201245 representing NM_001013251.
 Blue=ORF Red=Cloning site Green=Tag(s)

```

GCTCGTTTAGTGAACCGTCAGAATTTTGTAAACGACTCACTATAGGGCGGCCGGGAATTCGTGCGACTG
GATCCGGTACCGAGGAGATCTGCCGCCGCGATCGCC
ATGAGCCAGGACACCGAGGTGGATATGAAGGAGGTGGAGCTGAATGAGTTAGAGCCCAGAGAAGCAGCCG
ATGAACCGCGCGTCTGGGGCGGCCATGTCCCTGGCGGGAGCCGAGAAGAATGGTCTGGTGAAGATCAAG
GTGGCGGAAGACGAGGCCGAGGCCGAGCCGCGCTAAGTTCACGGCCCTGTCCAAGGAGGAGCTGCTG
AAGGTGGCAGGACGCCCGGCTGGGTACGACCCGCTGGGCACTGCTGCTCTTCTGGCTCGGCTGG
CTCGGCATGCTTGTGGTCCGTTGTCATAATCGTGCAGCGCCGCTTGTGCGGAGCTACCGGCGCAG
AAGTGGTGGCACACGGGCGCCCTCTACCGCATCGGCGACCTTCAGGCCTCCAGGGCCACGGCGCGGGC
AACCTGGCGGGTCTGAAGGGGCTCTCGATTACCTGAGCTCTCTGAAGGTGAAGGGCCTTGTGCTGGGT
CCAATTCACAAGAACCAGAAGGATGATGCTGCTCAGACTGACTTGTGCAGATCGACCCCAATTTGGC
TCCAAGGAAGATTTTACAGTCTCTTGAATCGGCTAAAAAAGAGCATCCGTGTCATTCTGGACCTT
ACTCCCAACTACGGGGTGAAGACTCGTGGTTCTCCACTCAGTTGACTGTGGCCACCAAGGTGAAG
GATGCTCTGGAGTTTGGCTGCAAGCTGGCGTGGATGGTTCCAGGTTCCGGGACATAGAGAATCTGAAG
GATGCATCCTCATTCTTGGCTGAGTGGCAAAATATCACCAAGGGCTTCAGTGAAGACAGGCTCTTATT
GCGGGGACTAACTCCTCCGACCTTCAGCAGATCCTGAGCCTACTCGAATCCAACAAGACTTGTGTTG
ACTAGCTCATACCTGTCTGATTCTGTTTCTACTGGGGAGCATACAAAATCCCTAGTCACACAGTATTTG
AATGCCACTGGCAATCGCTGGTGCAGCTGGAGTTTGTCTCAGGCAAGGCTCCTGACTTCTTCTTGGCCG
GCTCAACTTCTCCGACTTACCAGCTGATGCTCTTACCCTGCCAGGGACCCCTGTTTTTCCAGTACGGG
GATGAGATTGGCCTGGATGCAGCTGCCCTTCTGGACAGCCTATGGAGGCTCCAGTATGCTGTGGGAT
GATCCAGCTTCCCTGACATCCCAGGGGCTGAAGTGCCAACATGACTGTGAAGGGCCAGAGTGAAGAC
CCTGGCTCCCTCCTTCTTCTTGTTCGGCGGCTGAGTGACCAGCGGAGTAAGGAGCCTCCCTACTGCAT
GGGACTTCCACGCTTCTCCGCTGGGCTGGACTTCTCTCTATATCCGCCACTGGGACCAAGATGAG
CGTTTTCTGGTAGTGCTAACTTTGGGATGTGGGCTCTCGGCTGGACTGCAGGCCTCCGACCTGCCT
GCCAGCGCCAGCCTGCCAGCCAAGGCTGACCTCCTGCTCAGCACCAGCCAGGCCGTGAGGAGGGCTCC
CCTCTTGGAGTGGAACGCTGAACTGGAGCCTCACGAAGGGCTGCTGCTCCGCTCCCTACGCGGCC
AGCGGACCGACGCGTACGCGGCCGCTCGAG - GFP Tag - GTTTAAAC
  
```

Protein Sequence:

>Peptide sequence encoded by RG201245
 Blue=ORF Red=Cloning site Green=Tag(s)

```

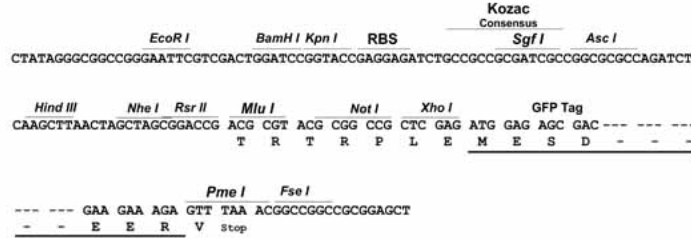
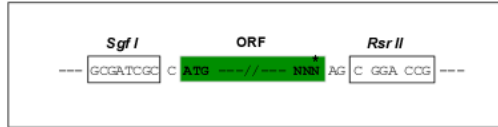
MSQDTEVDMKEVELNELEPEKQPMNAASGAAMSLAGAENGLVKIKVAEDEAEAAAAAKFTGLSKEELL
KVAGSPGWVTRWALLLLFWLWLGMLAGAVVIIVRAPRCRELPQKWWHTGALYRIGDLQAFQGHGAG
NLAGLKGRLDYLSSLKVKGLVLGPIHKNQKDDVAQTDLLQIDPNFGSKEDFDSLQSAKKKSIRVILD
TPNYRGENSWFSTQVDTVATKVKDALEFWLQAGVDGFQVRDIENLKDASSFLAEWQNIKGFSEDRLLI
AGTNSSDLQQILSLESNKDLLLLTSSYLSDSGSTGEHTKSLVTQYLNATGNRWCSWLSQARLLTSFLP
AQLRLRYQLMLFTLPGTPVFSYGEIIGLDAAALPGQPMEAPVMLWDESSFPDIPGAVSANMTVKQSED
PGSLLSLFRRLSDQRSKERSLLHGDFHAFSAGPGLFSYIRHWDQNERFLVVLNFGDVGLSAGLQASDLP
ASASLPKADLLLSTQPGREEGSPLERLKLPEHEGLLLRFPYAA
SGPTRTRPLEMESDESGLPAMEIECRITGTLNGVEFELVGGGEGTPEQGRMTNKMSTKGALTFSPYLL
SHVMGYGFYHFGTYPSTYENPFLHAINNGGYTNTRIEKYEDGGVLHVSFSYRYEAGRVIGDFKVMGTGF
PEDSVIFTDKIIRSNAIVEHLHPMGDNDLDGSFTRTFSLRDGGYSSVVDSHMHFKSAIHP SILQNGGP
MFAFRRVEEDHSNTELGIVEYQHAFKTPDADAGEERV
  
```

Restriction Sites:

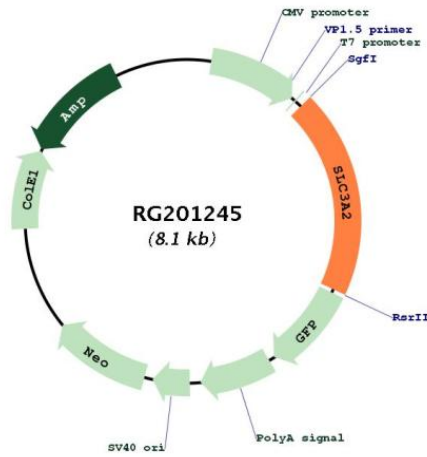
SgfI-RsrII

Cloning Scheme:

Cloning sites used for ORF Shuttling:



Plasmid Map:



ACCN:	NM_001013251
ORF Size:	1587 bp
OTI Disclaimer:	The molecular sequence of this clone aligns with the gene accession number as a point of reference only. However, individual transcript sequences of the same gene can differ through naturally occurring variations (e.g. polymorphisms), each with its own valid existence. This clone is substantially in agreement with the reference, but a complete review of all prevailing variants is recommended prior to use. More info
OTI Annotation:	This clone was engineered to express the complete ORF with an expression tag. Expression varies depending on the nature of the gene.
Components:	The ORF clone is ion-exchange column purified and shipped in a 2D barcoded Matrix tube containing 10ug of transfection-ready, dried plasmid DNA (reconstitute with 100 ul of water).
Reconstitution Method:	<ol style="list-style-type: none">1. Centrifuge at 5,000xg for 5min.2. Carefully open the tube and add 100ul of sterile water to dissolve the DNA.3. Close the tube and incubate for 10 minutes at room temperature.4. Briefly vortex the tube and then do a quick spin (less than 5000xg) to concentrate the liquid at the bottom.5. Store the suspended plasmid at -20°C. The DNA is stable for at least one year from date of shipping when stored at -20°C.
RefSeq:	NM_001013251.3
RefSeq Size:	1938 bp
RefSeq ORF:	1590 bp
Locus ID:	6520
UniProt ID:	P08195
Cytogenetics:	11q12.3
Protein Families:	Transmembrane
MW:	57.9 kDa
Gene Summary:	This gene is a member of the solute carrier family and encodes a cell surface, transmembrane protein. The protein exists as the heavy chain of a heterodimer, covalently bound through di-sulfide bonds to one of several possible light chains. The encoded transporter plays a role in regulation of intracellular calcium levels and transports L-type amino acids. Alternatively spliced transcript variants, encoding different isoforms, have been characterized. [provided by RefSeq, Nov 2010]