

Product datasheet for **RG201212**

IFNAR2 (NM_207584) Human Tagged ORF Clone

Product data:

Product Type:	Expression Plasmids
Product Name:	IFNAR2 (NM_207584) Human Tagged ORF Clone
Tag:	TurboGFP
Symbol:	IFNAR2
Synonyms:	IFN-alpha-REC; IFN-R; IFNABR; IFNARB; IMD45
Mammalian Cell Selection:	Neomycin
Vector:	pCMV6-AC-GFP (PS100010)
E. coli Selection:	Ampicillin (100 ug/mL)
ORF Nucleotide Sequence:	>RG201212 representing NM_207584 Red=Cloning site Blue=ORF Green=Tags(s)

TTTTGTAATACGACTCACTATAGGGCGGCCGGAATTCGTCGACTGGATCCGGTACCGAGGAGATCTGCC
GCC**CGATCGCC**

ATGCTTTTGAGCCAGAATGCCTTCATCGTCAGATCACTTAATTTGGTTCTCATGGTGTATATCAGCCTCG
TGTTTGGTATTTTCATATGATTCGCCTGATTACACAGATGAATCTTGCACTTTCAAGATATCATTGCGAAA
TTTCCGGTCCATCTTATCATGGGAATTAACCAACTCCATTGTACCAACTCACTATACATTGCTGTAT
ACAATCATGAGTAAACCAGAAGATTTGAAGGTGGTTAAGAAGTGTGCAAAATACCACAAGATCATTGTTG
ACCTCACAGATGAGTGGAGAAGCACACAGAGGCCTATGTCACCGTCCTAGAAGGATTCAGCGGGAACAC
AACGTTGTTTCAGTTGCTCACACAATTTCTGGCTGGCCATAGACATGTCTTTGAACCACCAGAGTTGAG
ATTGTTGGTTTTACCAACCACATTAATGTGATGGTAAATTTCCATCTATTGTTGAGGAAGAATTACAGT
TTGATTTATCTCTCGTCATTGAAGAAGCAGTCAGAGGGAATTGTTAAGAAGCATAAACCCGAAATAAAGG
AAACATGAGTGGAAATTTACCTATATCATTGACAAGTTAATTCCAAACACGAACTACTGTGTATCTGTT
TATTTAGAGCACAGTGATGAGCAAGCAGTAATAAAGTCTCCCTTAAATGCACCCCTCTCCACCTGGCC
AGGAATCAGAATCAGCAGAATCTGCCAAATAGGAGGAATAATTACTGTGTTTTGATAGCATTGGTCTT
GACAAGCACCATAGTGACTGAAATGGATTGGTTATATATGCTTAAGAAATAGCCTCCCCAAAGTCTTG
AGGCAAGTCTCACTAAGGGCTGGAATGCAGTGGCTATTCACAGTGCAGTCATAATGACTACAGTCTG
AAACTCTGAGCTCAAACAGTCGCTCGCTAAGCTTCCCCAGTAGCTGGGATTACAAGCGTGCATCCCT
GTGCCCCAGTGAT

ACGCGTACGCGGCCGCTCGAG - GFP Tag - GTTTAA



[View online »](#)

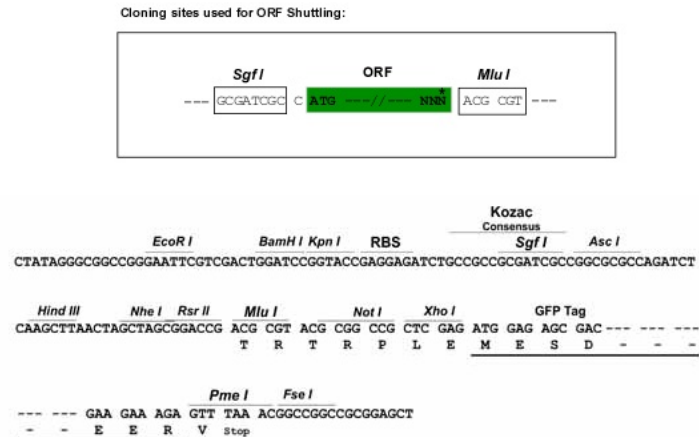
Protein Sequence: >RG201212 representing NM_207584
Red=Cloning site Green=Tags(s)

MLLSQNAFIVRSLNLVLMVYISLVFGISYDSPDYDESCTFKISLRNFRSILSWELKNHSIVPTHYLLY
 TIMSKPEDLKVVKNCAANTTRSFCDLTDWRSTHEAYVTVLEGFSGNTTLFSCSHNFWLAIDMSFEPPEFE
 IVGFTNHINVMVKFPSIVEEELQFDLSLVIEEQSEGIVKHKHPEIKGNMSGNFYIIDKLIPTNTYCVSV
 YLEHSDEQAVIKSPLKCTLLPPGQESAESESAKIGGIITVFLIALVLTSTIVTLKWIGYICLRNSLPKVL
 RQGLTKGWNVAIHRCSHNLQSETPELKQSSCLFSPSSWDYKRASLCPSPD

TRTRPLE - GFP Tag - V

Restriction Sites: SgfI-MluI

Cloning Scheme:



ACCN: NM_207584

ORF Size: 993 bp

OTI Disclaimer: The molecular sequence of this clone aligns with the gene accession number as a point of reference only. However, individual transcript sequences of the same gene can differ through naturally occurring variations (e.g. polymorphisms), each with its own valid existence. This clone is substantially in agreement with the reference, but a complete review of all prevailing variants is recommended prior to use. [More info](#)

OTI Annotation: This clone was engineered to express the complete ORF with an expression tag. Expression varies depending on the nature of the gene.

Components: The ORF clone is ion-exchange column purified and shipped in a 2D barcoded Matrix tube containing 10ug of transfection-ready, dried plasmid DNA (reconstitute with 100 ul of water).

Reconstitution Method:

1. Centrifuge at 5,000xg for 5min.
2. Carefully open the tube and add 100ul of sterile water to dissolve the DNA.
3. Close the tube and incubate for 10 minutes at room temperature.
4. Briefly vortex the tube and then do a quick spin (less than 5000xg) to concentrate the liquid at the bottom.
5. Store the suspended plasmid at -20°C. The DNA is stable for at least one year from date of shipping when stored at -20°C.

RefSeq: [NM_207584.1](#), [NP_997467.1](#)

RefSeq Size: 1382 bp

RefSeq ORF: 996 bp

Locus ID: 3455

UniProt ID: [P48551](#)

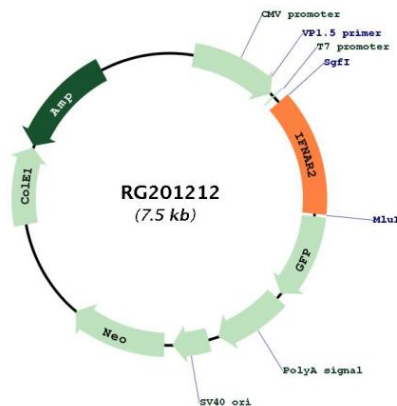
Cytogenetics: 21q22.11

Protein Families: Druggable Genome, Transmembrane

Protein Pathways: Cytokine-cytokine receptor interaction, Jak-STAT signaling pathway, Natural killer cell mediated cytotoxicity, Toll-like receptor signaling pathway

Gene Summary: The protein encoded by this gene is a type I membrane protein that forms one of the two chains of a receptor for interferons alpha and beta. Binding and activation of the receptor stimulates Janus protein kinases, which in turn phosphorylate several proteins, including STAT1 and STAT2. The protein belongs to the type II cytokine receptor family. Mutations in this gene are associated with Immunodeficiency 45. [provided by RefSeq, Jul 2020]

Product images:



Circular map for RG201212