

Product datasheet for **RG201205**

KAP1 (TRIM28) (NM_005762) Human Tagged ORF Clone

Product data:

Product Type:	Expression Plasmids
Product Name:	KAP1 (TRIM28) (NM_005762) Human Tagged ORF Clone
Tag:	TurboGFP
Symbol:	KAP1
Synonyms:	KAP1; PPP1R157; RNF96; TF1B; TIF1B
Mammalian Cell Selection:	Neomycin
Vector:	pCMV6-AC-GFP (PS100010)
E. coli Selection:	Ampicillin (100 ug/mL)



[View online »](#)

**ORF Nucleotide
Sequence:**

>RG201205 representing NM_005762
 Red=Cloning site Blue=ORF Green=Tags(s)

TTTTGTAATACGACTCACTATAGGGCGGCCGGGAATTCGTCGACTGGATCCGGTACCGAGGAGATCTGCC
 GCC**CGGATCGCC**

ATGGCGGCTCCGCGGCGCAGCCTCGGCAGCAGCGGCTCGGCCGCTCTGGCAGCCCGGGCCCGGGCG
 AGGGCTCCGCTGGCGGCGAAAAGCGCTCCACCGCCCTTCGGCCGAGCCTCGGCCCTCTGCCTCAGCCG
 GGCGTCGTCGCCCGGGGGGCGCGCCGAGGCGCTGGAGCTGCTGGAGCACTGGCGGTGTGCAGAGAG
 CGCCTGCGACCCGAGAGGGAGCCCGCCTGCTGCCCTGTTTGCCTCGGCTGTAGTGCCTGCTTAGGGC
 CCGCGGCCCGCGCCCAACAGCTCGGGGACGGCGGGCGCGGGCAGCGCACCGTGGTGGACTG
 TCCCGTGTCAAGCAACAGTCTTCTCAAAGACATCGTGGAGAATTATTTATGCGTGATAGTGGCAGC
 AAGGCTGCCACCGACGCCAGGATGCGAACAGTCTGCACTAGCTGTGAGGATAATGCCCCAGCCACCA
 GCTACTGTGTGGAGTCTCGGAGCCTCTGTGTGAGACCTGTGTAGAGGCGCACCGGGTGAAGTACAC
 CAAGGACCATACTGTGCGCTCTACTGGCCAGCCAAGTCTCGGGATGGTGAACGTACTGTCTATTGCAAC
 GTACACAAGCATGAACCCCTTGTGCTGTTTTGTGAGAGCTGTGATACTCTCACCTGCCGAGACTGCCAGC
 TCAATGCCCAAGGACCACAGTACCAGTTCTTAGAGGATGCAGTGAAGAACCGCAAGCTCCCTGGC
 CTAAGTGGTGAAGCGCCTTGGGGACAAACATGCAACATTGCAGAAGAGCACCAAGGAGGTTTCGACGCTCA
 ATCCGCCAGGTGTCTGACGTACAGAAGCGTGTGCAAGTGGATGTCAAGATGGCCATCCTGCAGATCATGA
 AGGAGCTGAATAAGCGGGGCCGTGTGCTGGTCAATGATGCCCAGAAGGTGACTGAGGGGCAGCAGGAGCG
 CCTGGAGCGGCAGCACTGGACCATGACCAAGATCCAGAAGCACCAGGAGCACATTCTGCGCTTTGCCTCT
 TGGGCTCTGGAGAGTGACAACAACACAGCCCTTTGCTTTCTAAGAAGTTGATCTACTTCCAGCTCAACC
 GGGCCCTCAAGATGATTGTGGATCCCCTGGAGCCACATGGCGAGATGAAGTTTTCAGTGGACCTCAATGC
 CTGGACCAAGAGTCCCGAGGCCCTTTGGCAAGATTGTGGCAGAGCGTCTGGCACTAACTCAACAGGCCCT
 GCACCCATGGCCCTCCAAGAGCCCGAGGGCCCTGAGCAAGCAGGGCTCTGGCAGCAGCCAGCCCATGG
 AGGTGCAGGAAGGCTATGGCTTTGGGTGAGGAGATGATCCCTACTCAAGTGCAGAGCCCCATGTGTGAGG
 TGTGAAACGGTCCCGCTCAGGTGAGGGCGAGGTGAGCGGCCTTATGCGCAAGGTGCCACGAGTGAGCCTT
 GAACGCTGGACCTGGACCTCACAGCTGACAGCCAGCCACCCGCTTCAAGGTCTTCCAGGCACTACCA
 CTGAGGACTACAACCTTATTGTTATTGAACGTGGCGCTGCCGCTGCAGCTACCGCCAGCCAGGGACTGC
 GCCTGCAGGAACCCCTGGTGGCCACCCCTGGCTGGCATGGCCATTGTCAAGGAGGAGGAGACGGAGGCT
 GCCATTGGAGCCCTCCTACTGCCACTGAGGGCCCTGAGACCAACCTGTGCTTATGGCTCTTGGCGAGG
 GTCTGTGTGAGGGTCCCGCCTGGCCTCACCTAGTGGCAGCACCAGCTCAGGGCTGGAGGTGGTGGC
 TCCTGAGGGTACCTCAGCCCCAGGTGGTGGCCCGGAACCCCTGGATGACAGTGCCACCATTTGCCGTGTC
 TGCCAGAAGCCAGGCGATCTGGTTATGTGCAACCAGTGTGAGTTTTGTTCCACCTGGACTGTCACCTGC
 CGGCCCTGCAGGATGTACCAGGGGAGGAGTGGAGCTGCTCACTCTGCCATGTGCTCCCTGACCTGAAGGA
 GGAGGATGGCAGCCTCAGCCTGGATGGTGCAGACAGCACTGGCGTGGTGGCCAAGCTCTCACCAGCCAAC
 CAGCGGAAATGTGAGCGTGTACTGCTGGCCCTATTCTGTACGAACCCCTGCCGCCCTGCATCAGCTGG
 CTACCGACTCCACCTTCCCTGGACCAGCCCGGTGGCACCCCTGGATCTGACCTGATCCGTGCCCGCT
 CCAGGAGAAGTTGTACCTCCCTACAGCTCCCCACAGGAGTTTGCCAGGATGTGGGCCGATGTTCAAG
 CAATTCACAAGTTAACTGAGGACAAGGACAGCTGCAGTCCATCATCGGCCTGCAGCGCTTCTTCGAGA
 CGCGCATGAACGAGGCCCTCGGTGACACCAAGTCTCTGCTGTGCTGGTGGAGCCCCCGCGATGAGCCT
 GCCTGGTGTGCTGAGTTCAGGAGCTGTCTGGTGGCCCTGGTGTGGCCCC

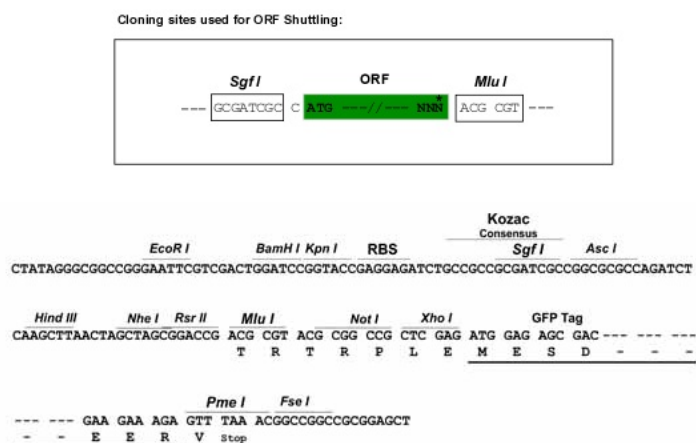
ACGGTACGCGGCCGCTCGAG – GFP Tag – GTTTAA

Protein Sequence: >RG201205 representing NM_005762
Red=Cloning site Green=Tags(s)

MAASAAAASAAAASAGSPGPGEGSAGGEKRSTAPSAASASASAAAASSPAGGGAELELLEHCGVCRE
RLRPEREPRLLPCLHSACSACLGAAPAAAANSSGDGGAAGDGTVDPCVCKQQCFSKDIVENYFMRDSGS
KAATDAQDANQCCTSCEDNAPATSYCVECSEPLCETCVEAHQRVKYTKDHTVVRSTGPAKSRDGERTVYCN
VHKHEPLVLFCESCDTLTCRDCQLNAHKDHQYQFLEDAVRNQRKLLASLVKRLGDKHATLQKSTKEVRSS
IRQVSDVQKRVQVDVKMAILQIMKELNKRGRVLVNDAAQVTEGQERLERQHWTMTKIQKHQEHILRFAS
WALESDNNTALLLSKKLIYFQLHRALKMIVDPVEPHGEMKFQWDLNAWTKSAEAFGKIVAERPSTNSTGP
APMAPPRAPGPLSKQGGSSQPMEVQEGYGFSGDDPYSSAEPHYSGVKRSRSGEGEVSGLMRKVPRVSL
ERLDLDTADSQPPVFKVFPGSTTEDYNLIVIERGAAAAATGQPGTAPAGTPGAPPLAGMAIVKEEETEA
AIGAPPTATEGPETKPVLMALAEPGAEGPRLASPSGSTSSGLEVVPEGTSAPGGGPGTLDDSATICRV
CQKPGDLVMCNQCEFCFHLDCPLALQDVPGEWSSCSLCHVLPDLKEEDGSLSLDGADSTGVVAKLSPAN
QRKCERVLLALFCHEPCRPLHQLATDSTFSLDQPGGTLDLTLIRARLQEKLSPPYSSPQEFQADVGRMFK
QFNKLTEDKADVQSIIGLQRFFETRMNEAFGDTKFSAVLVEPPMSLPGAGLSSQELSGGPGDGP

TRTRPLE - GFP Tag - V

Restriction Sites: SgfI-MluI

Cloning Scheme:


- ACCN:** NM_005762
- ORF Size:** 2505 bp
- OTI Disclaimer:** The molecular sequence of this clone aligns with the gene accession number as a point of reference only. However, individual transcript sequences of the same gene can differ through naturally occurring variations (e.g. polymorphisms), each with its own valid existence. This clone is substantially in agreement with the reference, but a complete review of all prevailing variants is recommended prior to use. [More info](#)
- OTI Annotation:** This clone was engineered to express the complete ORF with an expression tag. Expression varies depending on the nature of the gene.
- Components:** The ORF clone is ion-exchange column purified and shipped in a 2D barcoded Matrix tube containing 10ug of transfection-ready, dried plasmid DNA (reconstitute with 100 ul of water).

Reconstitution Method:

1. Centrifuge at 5,000xg for 5min.
2. Carefully open the tube and add 100ul of sterile water to dissolve the DNA.
3. Close the tube and incubate for 10 minutes at room temperature.
4. Briefly vortex the tube and then do a quick spin (less than 5000xg) to concentrate the liquid at the bottom.
5. Store the suspended plasmid at -20°C. The DNA is stable for at least one year from date of shipping when stored at -20°C.

RefSeq: [NM_005762.3](#)

RefSeq Size: 2989 bp

RefSeq ORF: 2508 bp

Locus ID: 10155

UniProt ID: [Q13263](#)

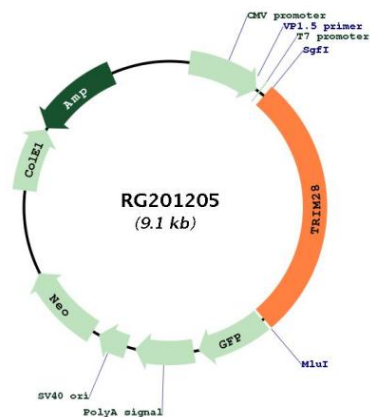
Cytogenetics: 19q13.43

Domains: zf-B_box, BROMO, RING, PHD, BBC

Protein Families: Protein Kinase, Stem cell - Pluripotency, Transcription Factors

Gene Summary: The protein encoded by this gene mediates transcriptional control by interaction with the Kruppel-associated box repression domain found in many transcription factors. The protein localizes to the nucleus and is thought to associate with specific chromatin regions. The protein is a member of the tripartite motif family. This tripartite motif includes three zinc-binding domains, a RING, a B-box type 1 and a B-box type 2, and a coiled-coil region. [provided by RefSeq, Jul 2008]

Product images:



Circular map for RG201205