

Product datasheet for **RG201146**

PLAT (NM_033011) Human Tagged ORF Clone

Product data:

Product Type:	Expression Plasmids
Product Name:	PLAT (NM_033011) Human Tagged ORF Clone
Tag:	TurboGFP
Symbol:	PLAT
Synonyms:	T-PA; TPA
Mammalian Cell Selection:	Neomycin
Vector:	pCMV6-AC-GFP (PS100010)
E. coli Selection:	Ampicillin (100 ug/mL)



[View online »](#)

ORF Nucleotide Sequence:

>RG201146 representing NM_033011
 Red=Cloning site Blue=ORF Green=Tags(s)

TTTTGTAATACGACTCACTATAGGGCGGCCGGAATTCGTCGACTGGATCCGGTACCGAGGAGATCTGCC
 GCC**CGATCGCC**

ATGGATGCAATGAAGAGAGGGCTCTGCTGTGTGCTGCTGCTGTGTGGAGCAGTCTTCGTTTCGCCAGCC
 AGGAAATCCATGCCCGATTTCAGAAGAGGAGCCAGATCTTACCAAGGTTGCAGCGAGCCAAGGTGTTTCAA
 CGGGGGCACCTGCCAGCAGGCCCTGTACTTCTCAGATTTCTGTGCCAGTGCCCCGAAGGATTTGCTGGG
 AAGTGCTGTGAAATAGATACCAGGGCCACGTGCTACGAGGACCAGGGCATCAGCTACAGGGGCACGTGGA
 GCACAGCGGAGAGTGGCGCCGAGTGCACCAACTGGAACAGCAGCGGTTGGCCAGAAGCCCTACAGCGG
 GCGGAGGCCAGACGCCATCAGGCTGGGCCTGGGAACCACAACACTACTGCAGAAACCCAGATCGAGACTCA
 AAGCCCTGGTGTACGTCTTAAGGCGGGGAAGTACAGCTCAGAGTTCTGCAGCACCCCTGCCTGCTCTG
 AGGAAACAGTGACTGCTACTTTGGGAATGGGTCAGCCTACCGTGGCACGCACAGCCTCACCGAGTCGGG
 TGCTCCTGCCTCCCGTGAATTCATGATCCTGATAGGCAAGGTTTACACAGCACAGAACCCAGTGCC
 CAGGCACTGGGCCTGGGCAACATAATTACTGCCGGAATCCTGATGGGGATGCCAAGCCCTGGTGCCACG
 TGCTGAAGAACCAGGCTGACGTGGGAGTACTGTGATGTGCCCTCCTGTCTCACCTGCGGCCTGAGACA
 GTACAGCCAGCCTCAGTTTCGCATCAAAGGAGGGCTCTTCGCCGACATCGCCTCCACCCCTGGCAGGCT
 GCCATCTTTGCCAAGCACAGGAGGTGCGCCGGAGAGCGGTTCTGTGCGGGGGCATACTCATCAGCTCCT
 GCTGGATTCTCTGCGGCCACTGCTTCCAGGAGAGGTTTCCGCCCCACCACCTGACGGTGATCTTGGG
 CAGAACATACCGGGTGGTCCCTGGCGAGGAGGAGCAGAAATTTGAAGTCGAAAAATACATTGTCCATAAG
 GAATTCGATGATGACACTTACGACAATGACATTGCGCTGCTGCAGCTGAAATCGGATTCGTCCTCCGCTGTG
 CCCAGGAGAGCAGCGTGGTCCGACTGTGTGCTTCCCCGGCGGACCTGCAGCTGCCGACTGGACGGA
 GTGTGAGCTCTCCGGCTACGGCAAGCATGAGGCCTTGTCTCCTTTCTATTCCGGAGCGGCTGAAGGAGGCT
 CATGTGCACTGTACCCATCCAGCCGCTGCACATCACAACATTTACTTAACAGAACAGTCCCGACAACA
 TGCTGTGTGCTGGAGACTCGGAGCGCGGGCCCCAGGCAACTTGCACGACGCCTGCCAGGGCGATTTC
 GGGAGGCCCTGGTGTGTCTGAACGATGGCCGCATGACTTTGGTGGGCATCATCAGCTGGGGCCTGGGC
 TGTGGACAGAAGGATGTCCCGGTGTGTACACCAAGGTTACCAACTACCTAGACTGGATTCGTGACAACA
 TCGCACCC

ACGCGTACGCGGCCGCTCGAG - GFP Tag - GTTTAA

Protein Sequence:

>RG201146 representing NM_033011
 Red=Cloning site Green=Tags(s)

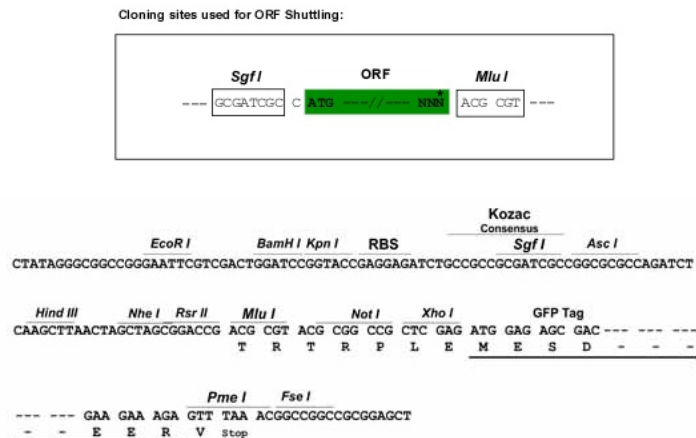
MDAMKRGLCCVLLLCGAVFVSPSQEIHARFRRGARSYQGCSEPRCFNGGTCQQALYFSDFCQCEPFGAG
 KCCEIDTRATCYEDQGISYRGTWSTAESGAECTNWNSSALAQKPYSGRRPDAILRGLGNHNYCRNPDRDS
 KPWCYVFKAGKYSSEFCSTPACSEGNSDCYFNGSAYRGTHSLTESGASCLPWNSMILIGKYVYTAQNPSA
 QALGLGKHNCRNPDGDAKPWCHVLKNNRRLTWEYCDVPCSTCGLRQYSQPQFRIRKGLFADIASHPWQA
 AIFAKHRRSPGERFLCGGILISSCWILSAAHCFQERFPPHLLTVILGRTYRVVPGEEEQKFEVEKYIVHK
 EFDDDTYDNDIALLLKSDSSRCAQESSVVRTVCLPPADLQLPDWTECELSGYGKHEALSPFYSERLKEA
 HVRLYPSSRCTSQHLLNRTVTDNMLCAGDTRSGGPQANLHDACQGDSSGGLVCLNDGRMTLVGIIISWGLG
 CGQKDVPGVYTKVTNYLDWIRDNMRP

TRTRPLE - GFP Tag - V

Restriction Sites:

Sgfl-Mlul

Cloning Scheme:



- ACCN:** NM_033011
- ORF Size:** 1548 bp
- OTI Disclaimer:** The molecular sequence of this clone aligns with the gene accession number as a point of reference only. However, individual transcript sequences of the same gene can differ through naturally occurring variations (e.g. polymorphisms), each with its own valid existence. This clone is substantially in agreement with the reference, but a complete review of all prevailing variants is recommended prior to use. [More info](#)
- OTI Annotation:** This clone was engineered to express the complete ORF with an expression tag. Expression varies depending on the nature of the gene.
- Components:** The ORF clone is ion-exchange column purified and shipped in a 2D barcoded Matrix tube containing 10ug of transfection-ready, dried plasmid DNA (reconstitute with 100 ul of water).
- Reconstitution Method:**
1. Centrifuge at 5,000xg for 5min.
 2. Carefully open the tube and add 100ul of sterile water to dissolve the DNA.
 3. Close the tube and incubate for 10 minutes at room temperature.
 4. Briefly vortex the tube and then do a quick spin (less than 5000xg) to concentrate the liquid at the bottom.
 5. Store the suspended plasmid at -20°C. The DNA is stable for at least one year from date of shipping when stored at -20°C.
- RefSeq:** [NM_033011.4](#)
- RefSeq Size:** 2534 bp
- RefSeq ORF:** 1551 bp
- Locus ID:** 5327
- UniProt ID:** [P00750](#)
- Cytogenetics:** 8p11.21

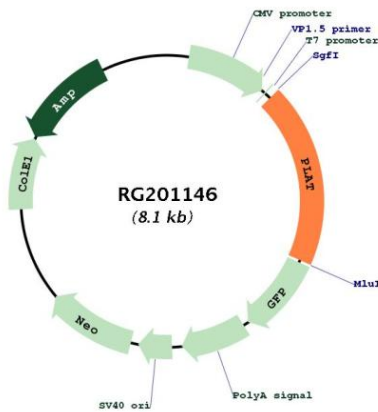
Domains: KR, Tryp_SPC, EGF

Protein Families: Druggable Genome, Protease, Secreted Protein

Protein Pathways: Complement and coagulation cascades

Gene Summary: This gene encodes tissue-type plasminogen activator, a secreted serine protease that converts the proenzyme plasminogen to plasmin, a fibrinolytic enzyme. The encoded preproprotein is proteolytically processed by plasmin or trypsin to generate heavy and light chains. These chains associate via disulfide linkages to form the heterodimeric enzyme. This enzyme plays a role in cell migration and tissue remodeling. Increased enzymatic activity causes hyperfibrinolysis, which manifests as excessive bleeding, while decreased activity leads to hypofibrinolysis, which can result in thrombosis or embolism. Alternative splicing of this gene results in multiple transcript variants, at least one of which encodes an isoform that is proteolytically processed. [provided by RefSeq, Jan 2016]

Product images:



Circular map for RG201146