

Product datasheet for **RG201122**

BAT3 (BAG6) (NM_080702) Human Tagged ORF Clone

Product data:

Product Type:	Expression Plasmids
Product Name:	BAT3 (BAG6) (NM_080702) Human Tagged ORF Clone
Tag:	TurboGFP
Symbol:	BAG6
Synonyms:	BAG-6; BAT3; D6S52E; G3
Mammalian Cell Selection:	Neomycin
Vector:	pCMV6-AC-GFP (PS100010)
E. coli Selection:	Ampicillin (100 ug/mL)
ORF Nucleotide Sequence:	>RG201122 representing NM_080702 Red=Cloning site Blue=ORF Green=Tags(s)

TTTTGTAATACGACTCACTATAGGGCGGCCGGAATTCGTCGACTGGATCCGGTACCGAGGAGATCTGCC
GCC**CGATCGCC**

ATGGAGCCTAATGATAGTACCAGTACCGCTGTGGAGGAGCCTGACAGCTTGGAGGTGTTGGTGAAGACCT
TGGACTCTCAAACCTCGTACCTTTATTGTGGGGGCCAGATGAATGTAAAAGAGTTAAGGAGCACATTGC
TGCCTCTGTCAGCATCCCATCTGAAAAACAACGGCTCATTTACCAGGGACGAGTTCTGCAAGATGATAAG
AAGCTTCAGGAATACAATGTTGGGGAAAGTTATCCACCTGGTGAACGGGCTCCTCCTCAGACTCACC
TCCCTTCTGGGGCATCTTCTGGGACGGGTCTGCCTCAGCCACTCATGGTGGGGATCCCCCCTGGTAC
TCGGGGGCTGGGCCTCTGTTTCATGACCGGAATGCCAACAGCTATGTCATGGTTGGAACCTTCAATCTT
CCTAGTGACGGCTCTGCTGTGGATGTTACATCAACATGGAACAGGCCCGATTGAGAGTGAAGCCCGGG
TACGGCTGGTGATGGCTCAGCACATGATCAGGGATATACAGACCTTACTATCCCGGATGGAGTGTGAGG
AGGGCCCCAACCGCAGCACAGTCAGCCGCCCGCAGCCACCGGCTGTGACCCCGGAGCCAGTAGCCTTG
AGCTCTCAAACATCAGAACCAGTTGAAAGTGAAGCACCTCCCCGGGAGCCATGGAGGCAGAAGAAGTGG
AGGAGCGTGGCCAGCCAGAACCCGGAGCTCACTCCTGGCCAGCCCCAGCGGGCCCAACCTGCCCC
GGAAACAATGCACCAACCATCCTTCCCTGCGGAGTATGTCGAGGTGCTCCAGGAGCTACAGCGGCTG
GAGAGTCGCTCCAGCCCTTCTTGACGCGTACTACGAGTTCTGGGTGCTGCTGCCACCACGGACTACA
ATAACAATCACGAGGGCCGGGAGGAGGATCAGCGGTTGATCAACTTGGTGGGGAGAGCCTGCGACTGCT
GGCAACACCTTTGTTGCACTGTCTGACCTGCGTGAATCTGGCCTGCACGCCCCACGACACCTGCAT
GTGGTCCGGCCTATGTCTCACTACACCACCCCATGGTGTCCAGCAGGCAGCCATTCCCATACAGATCA
ATGTGGGAACCACTGTGACCATGACAGGAAATGGGACTCGCCCCCCCCAACTCCCAATGCAGAGGCACC
TCCCCCTGGTCTGGCAGGCCTCATCCGTGGTCCGTCTTCTACCAATGTCGAGTCTCAGCTGAGGGG
GCTCCCCGCCAGGTCCAGCTCCCCGCCAGCCACCGAGCCACCCGAGGTCATCCGGATTTCCACCAGA
GTGTGAAACCCGTGGTTCATGATGCACATGAACATTCAAGATTCTGGCACACAGCCTGGTGGTGTCCGAG
TGCTCCACTGGCCCCCTGGGACCCCTGGTTCATGGCCAAACCTGGGACAGCAGGTGCCAGGCTCCCA



[View online >](#)

```

ACAGCTCCAACCCGGGTGGTATTGCCCGGCCACTCCTCCACAGGCTCGGCCTTCCCATCCTGGAGGGC
CCCCAGTCTCTGGGACACTGCAGGGCGCCGGTCTGGGTACCAATGCCTCGTTGGCCAGATGGTGAGCGG
CCTTGTGGGGCAGCTTCTTATGCAGCCAGTCTTGTGGCTCAGGGGACCCAGGTATGGCTCCACCGCCA
GCCCTGCCACTGCTTCTGCCAGTGTGGCACCACCAACACAGCTACCACAGCTGGCCCCGCTCTGGGG
GGCCTGCCAGCCTCCACCCACCCTCAACCCTCCATGGTGTATCTTCACTTCTCAGCTTCTGGGGAA
CCTGTAGGGCCTGCAGGGCCAGGGCTGGAGGGTCTGGTGTGGCTTCTCCACCACACTGCTGCCGATG
CCTGGTCTCCCTGCCTTCTCCAAGGCATGACTGACTTCTTGCAGGCAACACAGACAGACCTCCACCAC
CCCCACCTCTCCACCCACCACCTGCCCCAGAGCAGCAGACCATGCCCCACCAGGCTCCCTTCTGG
TGGCGCAGGGAGTCTTGAGGCCTGGGTCTTGGAGCCTGTACCAGGAGTTTTTTACCTCAGTGGTGCAG
GGTGTGCTCAGCTCCCTGCTGGGCTCCCTGGGGCTCGGGCTGGCAGCAGTAAAAGTATTGCTGCCTTCA
TACAACGCCTCAGTGGATCCAGCAACATCTTTGAGCCTGGAGCTGATGGGGCCCTGGATTCTTTGGGGC
CTTGCTTTCTCTTGTGCCAGAACTTCTCTATGGTGGACGTAGTGTGCTTCTCCATGGGCATTTCCAG
CCACTACAACGGCTCCAGCCCCAGCTGCGATCTTCTCCACCAGCACTACCTGGGTGGTCCAGGAGCCCA
CAGCCAGTAACATCCGGATGGCAACCCACACATTGATCACGGGGCTAGAAGAGTATGTGCGGGAGAGTTT
TTCCTTGGTGCAGGTTCCAGCCAGGTGTGGACATCATCCGGACAAACCTGGAATTTCTCCAAGAGCAGTTT
AATAGCATTGCTGCGCATGTGCTGCATTGCACAGATAGTGGATTTGGGGCCCGGTTGCTGGAGTTGTGTA
ACCAAGGCCTGTTTGAATGCCTGGCCCTAAACCTGCACCTGCTTGGGGGGACAGCAGATGGAGCTTGTCTG
TGTATCAATGGCCGAATTCTGTCGTATGTCTCGTGGGGTGAATCCCTCCTTGGTGGAGTGGCTGACCACT
ATGATGGGACTGAGGCTTCCAGGTGGTACTGGAGCAGATGCCTGTAGGCCCTGATGCCATTCTCAGATACG
TTCGCAGGGTTGGTGTATCCCCCAGCCACTTCTGAGGAGCCAATGGAAGTTCCAGGGAGCAGAAAGAGC
TTCCTTCCAGCCTCAGCGGGAGAATGCTTCCCCAGCCCTGGAACAACAGCAGAAAGAGCCATGTCCCGA
GGTCCACCTCTGCTCCTGAGGGGGCTCCCGGGATGAACAGGATGGAGCTTCCAGTCCAGCAGAACTT
GGCAGCTGCAGTCCCCCAGAATGGGTCCCTATTATCCAGCAGGACATTCAGAGCCAGCCGAAGGTGAA
ACCGCAGCCCCCTCTGAGTGTGCTACCTACCTCAGTGGTATGCCTGCCAAGAGACGCAAGACGATGCCAGGT
GAGGGCCCCCAGCTGCTTCTCTCAGAGGCTGTGAGCCGGGCAGCTAAGGCAGCCGGAGCTCGGCCCTGA
CGAGCCCCGAGAGCCTGAGCCGGGACCTGGAGGCACCAGAGGTTCCAGGAGAGCTACAGGCAGCAGCTCCG
GTCTGATATACAAAAACGACTGCAGGAAGACCCCAACTACAGTCCCAGCGCTTCCCAATGCCAGCGG
GCCTTTGCTGATGATCCT
    
```

ACGCGTACGCGGGCCGCTCGAG - GFP Tag - GTTTAA

Protein Sequence:

>RG201122 representing NM_080702
 Red=Cloning site Green=Tags(s)

```

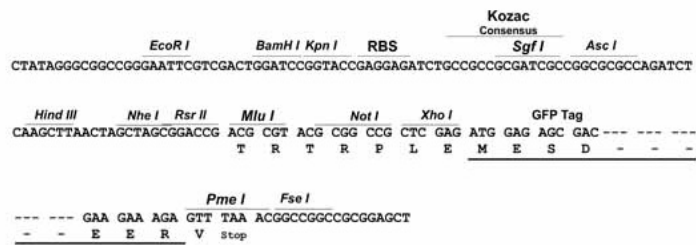
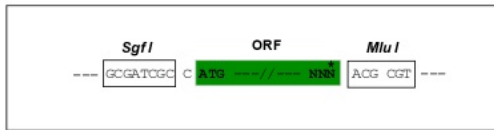
MEPNDSTSTAVEEPDSLEVLVKTLDSTQTRTFIVGAQMNKVEFKEHIAASVSIIPSEKQRLIYQGRVLQDDK
KLQEYNVGGKVIHLVERAPPQTHLPSGASSGTGSASATHGGGSPGTRGPGASVHNRNANSYVMVGTFFNL
PSDGSADVHVHINMEQAPIQSEPRVRLVMAQHMRDIQTLLSRMECRGGPQPQHSQPPPQPPAVTPEPVAL
SSQTSEPVSEAPPREPMEAEVEERAPAQNPELTPGPAPAGPTPAPETNAPNHPSPAIEVEVLQELQRL
ESRLQPFLLQRYEVLGAAATTDYNNHGREEDQRLINLVGESLRLLGNTFVALSDLRCNLACTPPRHLH
VVRPMSHYTTPMVLQAAIPIQINVTGTTMTGNGTRPPPTPNAEAPPPGPGQASSVAPSSTNVSSAEG
APPPGAPPPATSHPRVIRISHQSVPEVMMHMNIQDSGTQPGGVPSAPTGPLGPPGHGQTLGQQVPGFP
TAPTRVVIARPTPPQARPSHPGGPPVSGTLQGAGLGTNASLAQMVVSLVGLLQMLQPVVAQGTGPMAPP
APATASASAGTTNTATTAGPAPGGPAQPPPTPQPSMADLQFSQLLGNLLGPAGPGAGGSGVASPTITVAM
PGVPAFLQGMDFLQATQTAPPPPPPPPPPPAPEQQTMPPPGSPSGGAGSPGGLGLESLSPEFFTSVVQ
GVLSSLLGSLGARAGSSSEIAAFIQRLSGSSNIFEPGADGALGFFGALLSLLCQNF SMVDVVMLLHGHFQ
PLQRLQPLRSFFHQHYLGGQEPTPSNIRMATHLITGLEEYVRESFSLVQVQPGVDIIRTNLEFLQEQF
NSIAAHVHLHCTDSGFGARLLELQNGLFECLALNLHCLGGQMEAAVINGRIRRMRSRGNPSLVSWLTT
MMGLRLQVVEHMPVGPDAILRYVRRVGDPPQPLPEEPMVQGAERASPEPQRENASPAGTTAEAMSR
GPPPAPEGGRDEQDGASAETEPWAAAAPPEWVPIIQQDIQSQRKVKPQPPLSDAYLSGMPAKRRKTMQG
EGPQLLLSEAVSRAAKAAGARPLTSPESL SRDLEAPEVQESYRQQLRSDIQKRLQEDPNYSPQRFPAQR
AFADDP
    
```

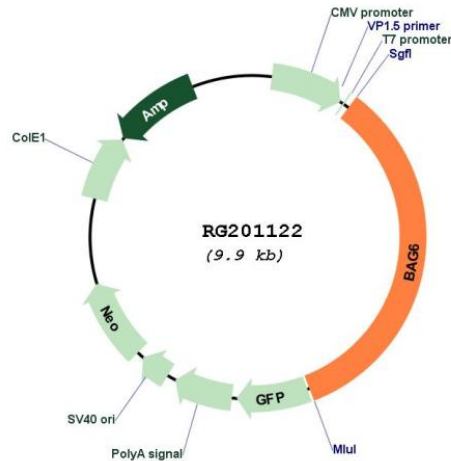
TRTRPLE - GFP Tag - V

Restriction Sites: SgfI-MluI

Cloning Scheme:

Cloning sites used for ORF Shuttling:



Plasmid Map:


ACCN: NM_080702

ORF Size: 3378 bp

OTI Disclaimer: The molecular sequence of this clone aligns with the gene accession number as a point of reference only. However, individual transcript sequences of the same gene can differ through naturally occurring variations (e.g. polymorphisms), each with its own valid existence. This clone is substantially in agreement with the reference, but a complete review of all prevailing variants is recommended prior to use. [More info](#)

OTI Annotation: This clone was engineered to express the complete ORF with an expression tag. Expression varies depending on the nature of the gene.

Components: The ORF clone is ion-exchange column purified and shipped in a 2D barcoded Matrix tube containing 10ug of transfection-ready, dried plasmid DNA (reconstitute with 100 ul of water).

Reconstitution Method:

1. Centrifuge at 5,000xg for 5min.
2. Carefully open the tube and add 100ul of sterile water to dissolve the DNA.
3. Close the tube and incubate for 10 minutes at room temperature.
4. Briefly vortex the tube and then do a quick spin (less than 5000xg) to concentrate the liquid at the bottom.
5. Store the suspended plasmid at -20°C. The DNA is stable for at least one year from date of shipping when stored at -20°C.

RefSeq: [NM_080702.3](#)

RefSeq Size: 3754 bp

RefSeq ORF: 3381 bp

Locus ID: 7917

UniProt ID: [P46379](#)

Cytogenetics: 6p21.33

Domains:	UBQ
Protein Families:	Druggable Genome, Stem cell - Pluripotency
Gene Summary:	This gene was first characterized as part of a cluster of genes located within the human major histocompatibility complex class III region. This gene encodes a nuclear protein that is cleaved by caspase 3 and is implicated in the control of apoptosis. In addition, the protein forms a complex with E1A binding protein p300 and is required for the acetylation of p53 in response to DNA damage. Multiple transcript variants encoding different isoforms have been found for this gene. [provided by RefSeq, Jul 2008]