

Product datasheet for **RG201121**

Alpha Dystroglycan (DAG1) (NM_004393) Human Tagged ORF Clone

Product data:

Product Type:	Expression Plasmids
Product Name:	Alpha Dystroglycan (DAG1) (NM_004393) Human Tagged ORF Clone
Tag:	TurboGFP
Symbol:	Alpha Dystroglycan
Synonyms:	156DAG; A3a; AGRNR; DAG; LGMDR16; MDDGA9; MDDGC7; MDDGC9
Mammalian Cell Selection:	Neomycin
Vector:	pCMV6-AC-GFP (PS100010)
E. coli Selection:	Ampicillin (100 ug/mL)



[View online »](#)

ORF Nucleotide Sequence:

>RG201121 representing NM_004393
 Red=Cloning site Blue=ORF Green=Tags(s)

TTTTGTAATACGACTCACTATAGGGCGGCCGGGAATTCGTCGACTGGATCCGGTACCGAGGAGATCTGCC
 GCC**GCGATCGCC**

ATGAGGATGTCTGTGGGCTCTCGCTGCTGCTGCCCTCTGGGGAGGACCTTTCTCCTCTGCTCTCTG
 TGGTTATGGCTCAGTCCCACTGGCCAGTGAACCTCAGAGGCTGTCAGGGACTGGGAAAACAGCTTGA
 GGCATCCATGCACTCAGTGCTCTCAGACCTCCACGAGGCTGTTCCACAGTGTTGGCATTCTGATGGC
 ACGGCTGTCTCGGGCGCTCATTTCGAGTGACCATTCCAACAGATTTGATTGCCTCCAGTGGAGATATCA
 TCAAGGTATCAGCGGCAGGGAAGGAGGCTTTGCCATCTTGGTGCCTGGGACTCACAGACCCACACCTT
 GGAGGGCTCCCCCTTGACTGATAAGGGTGTGCATTACATTTTCAGTGAGCGCTACACGGCTGGGGCC
 AACGGGAGCCACATCCCCAGACCTCCAGTGTGTTCTCCATCGAGGTCTACCCTGAAGACCACAGTGAGC
 TGCAGTCGGTGAGGACAGCTCCCCAGACCTGGTGAGGTGGTATCATCTGCCTGTGCTGCGGATGAACC
 TGTGACTGTTTTGACGGTGATTTTGGATGCCGACCTACCAAGATGACCCCAAAGCAAAGGATTGACCTC
 CTGCACAGGATGCGGAGCTTCTCAGAAGTAGAGCTTACAACATGAAATAGTCCGGTGGTGAATAACA
 GACTATTTGACATGTCTGGCTTCATGGCTGGCCCGGAAATGCAAAAAGGTGGTGGAGAATGGGGCCCT
 TCTCTCTGGAAGCTGGGCTGCTCCCTGAACCAGAACAGTGTGCCTGACATTCATGGTGTAGAGGCCCT
 GCCAGGGAGGGCGCAATGTCTGCTCAGCTTGGCTACCCTGTGGTGGGTTGGCACATCGCCAATAAGAAGC
 CCCCTCTTCCAAACGCGTCCGGAGGCAGATCCATGCTACACCCACACCTGTCACTGCCATTGGGCCCCC
 AACACGGCTATCCAGGAGCCCCATCCAGGATCGTCCAACCCACATCTCCAGCCATTGCTCCTCCA
 ACAGAGACCATGGCTCCTCCAGTCAGGGATCCTGTTCTGGGAAACCCACGGTACCATCCGGACTCGAG
 GCGCCATTATCAAACCCCAACCTAGGCCCATCCAGCCTACTCGGGTGCAGAAAGTGGCACCACAGT
 TCTTGGCCAGATTCGCCAACGATGACCAATTCTGGCTATGTGGAGCCTACTGCAGTTGCTACCCCTCCC
 ACAACCACCAAGAAGCCACGAGTATCCACACAAAACAGCAACGCCTTCAACTGACTCCACCACCA
 CCACGACTCGCAGGCCAACCAAGAAACACGGACACCCCGGCCAGTCCCCGGGTACCACCAAAGTTTC
 CATCACCAGATTGGAAACTGCCTCACCGCTACTCGTATTCGACCACCACAGTGGAGTCCCCGTGGC
 GGAGAACCAACAGCGCCAGAGCTCAAGAACCATATTGACAGGGTAGATGCCTGGGTTGGCACCTACT
 TTGAGGTGAAGATCCCGTCAGACACTTTCTATGACCATGAGGACACCACCTGACAAGCTGAAGCTGAC
 CCTGAAACTGCGGAGCAGCAGCTGGTGGGCGAGAAGTCTGGTACAGTTCAACAGCAACAGCCAGCTC
 ATGTATGGCTTCCCGACAGCAGCCACGTGGGCAAACACGAGATTTTCATGCATGCCACAGACAAGGGG
 GCCTGTGCGCTGTGGATGCCTTCGAGATCCACGTCCACAGGCGCCCCAAGGGGATAGGGCTCCTGCAAG
 GTTCAAGGCCAAGTTTGTGGGTGACCCGGCACTGGTGTGAATGACATCCACAAGAAGATTGCCTTGGTA
 AAGAACTGGCCTTCGCCTTTGGAGACCGAAACTGTAGCACCATACCCTGCAGAATATACCCGGGGCT
 CCATCGTGGTGGAAATGGACCAACAACACTGCCCTTGGAGCCCTGCCCAAGGAGCAGATCGCTGGGCT
 GAGCCCGCGATCGCTGAGGATGATGAAAACTCGGCCCTGCCTTCTCCAACGCCTAGAGCCTGACTTT
 AAGGCCACAAGCATCACTGTGACGGCTCTGGCAGTTGTGGCACCTACAGTTTATCCCTGTGGTACCAC
 CCAGGAGAGTGCCTCAGAGGCGCCGCCACAGAAGTGCCTGACAGGGACCCTGAGAAGAGCAGTGAGGA
 TGATGTCTACCTGCATACAGTCATTCGGCCGTGGTGGTGCAGCCATCCTGCTCATTGCTGGCATCAT
 GCCATGATCTGTACCGCAAGAAGCGGAAGGGCAAGCTTACCCTTGAGGACCAGGCCACCTTCATCAAGA
 AGGGGGTGCCTATCATCTTTCAGACGAACTGGACGACTCCAAGCCCCACCCTCCTCCAGCATGCCACT
 CATTCTGCAGGAGGAGAAGGCTCCCTACCCCTCCTGAGTACCCCAACCAGAGTGTGCCGAGACCACT
 CCTCTGAACCAGGACACCATGGGAGAGTACACGCCCTGCGGGATGAGGATCCCAATGCGCTCCCTACC
 AGCCCCACCGCCTTACAGCACCCATGGAGGGCAAGGGCTCCCGTCCAAGAACATGACCCCATACCG
 GTCACCTCCTCCATGTCCACCT

AG**CGGACCG**ACGCGTACGCGGCCGCTCGAG - GFP Tag - GTTAA

Protein Sequence: >RG201121 representing NM_004393
 Red=Cloning site Green=Tags(s)

```

MRMSVGLSLLLPLWGRTFLLLLSVVMAQSHWPSEPSEAVRDWENQLEASMHSVLSDLHEAVPTVVGIPDG
TAVVGRSFRVTIPTDLIASSGDIKVSAAAGKEALPSWLHWDSQSHTLEGLPLDQDKGVHYISVSATRLGA
NGSHIPQTSVVFSEIEVPEDHSELQSVRTASDPGGEVSSACAADPEVTLTVILDADLTKMTPKQRIDL
LHRMRSFSEVELHNMKLVPPVNNRFLDMSAFMAGPGNAKKVVENGALLSWKLGCSLNQNSVPDIHGVEAP
AREGAMSAQLGYPVVGWHIANKKPLPKRVRRQIHATPTPVTAIGPPTTAIQEPPSRIVPTPTSPAIAIPP
TETMAPPVRDPVPGKPTVTIRTRGAIQPTLGP IQPTRVSEAGTTVPQGIRPTMTIPGYVEPTAVATPP
TTTTKKPRVSTPKPATPSTDTSTTTTTRRPTKPRTPRPVPRVTTKVSITRLETASPPTRIRTTTSGVPRG
GEPNQRPDLKNHIDRVDAWVGTYFEVKIPSDTFYDHEDTTTDKLLKLLKLRQQLVGEKSWVQFNSNSQL
MYGLPDDSHVKGHEYFMHATDKGGLSAVDAFEIHVHRRPQDRAPARFKAKFVGD PALVLNDIHKKIALV
KKLAFAGDRNCSTITLQNI TRGSIVVEWTNNTLPLEPCPKEQIAGLSRRIAEDDGKPRPAFNALEPDF
KATSITVTGSGSCRHLQFIPVPPRRVPEAPTEVPDRDPEKSEDDVYLHTVIPAVVVAAILLIAGII
AMICYRKKRKGKLTLEDQATFIKKGVP IIFADELDDSKPPPSSSMLILQEEKAPLPPPEYPNQSVPETT
PLNQDTMGEYTPLRDEDPNAPPYQPPPPFTAPMEGKGSRPKNMTPYRSPPPYVPP
  
```

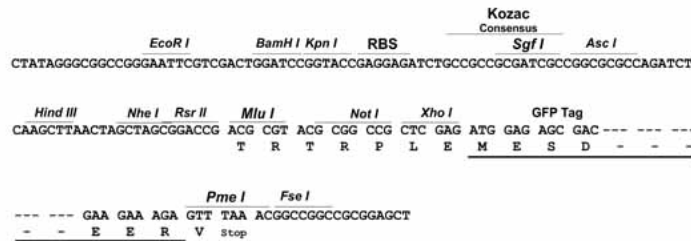
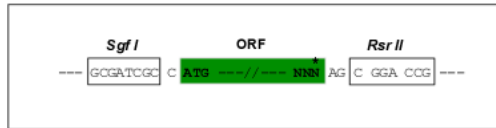
SGPTRRRLE - GFP Tag - V

Restriction Sites:

SgfI-RsrII

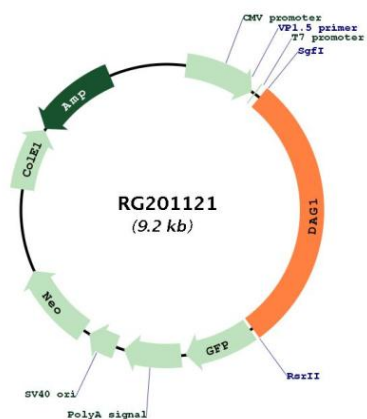
Cloning Scheme:

Cloning sites used for ORF Shuttling:



ACCN:	NM_004393
ORF Size:	2685 bp
OTI Disclaimer:	The molecular sequence of this clone aligns with the gene accession number as a point of reference only. However, individual transcript sequences of the same gene can differ through naturally occurring variations (e.g. polymorphisms), each with its own valid existence. This clone is substantially in agreement with the reference, but a complete review of all prevailing variants is recommended prior to use. More info
OTI Annotation:	This clone was engineered to express the complete ORF with an expression tag. Expression varies depending on the nature of the gene.
Components:	The ORF clone is ion-exchange column purified and shipped in a 2D barcoded Matrix tube containing 10ug of transfection-ready, dried plasmid DNA (reconstitute with 100 ul of water).
Reconstitution Method:	<ol style="list-style-type: none">1. Centrifuge at 5,000xg for 5min.2. Carefully open the tube and add 100ul of sterile water to dissolve the DNA.3. Close the tube and incubate for 10 minutes at room temperature.4. Briefly vortex the tube and then do a quick spin (less than 5000xg) to concentrate the liquid at the bottom.5. Store the suspended plasmid at -20°C. The DNA is stable for at least one year from date of shipping when stored at -20°C.
RefSeq:	NM_004393.1 , NP_004384.1
RefSeq Size:	5493 bp
RefSeq ORF:	2688 bp
Locus ID:	1605
UniProt ID:	Q14118
Cytogenetics:	3p21.31
Domains:	CADG
Protein Families:	Druggable Genome, Secreted Protein, Transmembrane
Protein Pathways:	Arrhythmogenic right ventricular cardiomyopathy (ARVC), Dilated cardiomyopathy, ECM-receptor interaction, Hypertrophic cardiomyopathy (HCM), Viral myocarditis
Gene Summary:	This gene encodes dystroglycan, a central component of dystrophin-glycoprotein complex that links the extracellular matrix and the cytoskeleton in the skeletal muscle. The encoded preproprotein undergoes O- and N-glycosylation, and proteolytic processing to generate alpha and beta subunits. Certain mutations in this gene are known to cause distinct forms of muscular dystrophy. Alternative splicing results in multiple transcript variants, all encoding the same protein. [provided by RefSeq, Nov 2015]

Product images:



Circular map for RG201121