

Product datasheet for **RG201114**

M Cadherin (CDH15) (NM_004933) Human Tagged ORF Clone

Product data:

Product Type:	Expression Plasmids
Product Name:	M Cadherin (CDH15) (NM_004933) Human Tagged ORF Clone
Tag:	TurboGFP
Symbol:	CDH15
Synonyms:	CDH3; CDH14; CDHM; MCAD; MRD3
Mammalian Cell Selection:	Neomycin
Vector:	pCMV6-AC-GFP (PS100010)
E. coli Selection:	Ampicillin (100 ug/mL)



[View online »](#)

ORF Nucleotide Sequence:

>RG201114 representing NM_004933
 Red=Cloning site Blue=ORF Green=Tags(s)

TTTTGTAATACGACTCACTATAGGGCGGCCGGGAATTCGTCGACTGGATCCGGTACCGAGGAGATCTGCC
 GCC**CGGATCGCC**

ATGGACGCCGCGTTCCTCCTCGTCTCGGGCTGTTGGCCAGAGCCTCTGCCTGTCTTTGGGGTTCCTG
 GATGGAGGAGGCCACCACTGTACCCCTGGCGCCGGGCGCCTGCCCTGAGCCGCGTCCGAGGGCCTG
 GGTATCCCCGATCAGCGTATCCGAGAACCACAAGCGTCTCCCTACCCCTGGTTTCAGATCAAGTCG
 GACAAGCAGCAGCTGGGAGCGTCATCTACAGCATCCAGGGACCCGGCGTGGATGAGGAGCCCCGGGGCG
 TCTTCTATCGACAAGTTCACAGGGAAGTCTTCTCAATGCCATGCTGGACCGGAGAAGACTGATCG
 CTTCAGGCTAAGAGCGTTTGCCTGGACCTGGGAGGATCCACCCTGGAGGACCCACGGACTGGAGATT
 GTAGTTGGATCAGAATGACAACCGGCCAGCCTTCTGCAGGAGCGTTCAGTGGCCGCGTCTGGAGG
 GTGCAGTCCAGGCACCTATGTGACCAGGGCAGAGGCCACAGATGCCGACGCCCGAGACGGACAACGC
 AGCGCTGCGGTTCTCCATCCTGCAGCAGGGCAGCCCCGAGCTTTCAGCATCGACGAGCTCACAGGAGAG
 ATCCGCACAGTGCAAGTGGGGCTGGACCCGAGGTTGGTCGCGGTGTAATCTGACCCTGCAGGTGGCGG
 ACATGTCTGGAGACGGCCTCACAGCCACTGCCTCAGCCATCATACCCCTGATGACATCAATGACATGC
 CCCCAGTTTACCAGGGATGAGTTCTTCATGGAGGCCATAGAGGCCGTCAGCGGAGTGGATGTGGGACGC
 CTGGAAGTGGAGGACAGGGACCTGCCAGGCTCCCCAACTGGGTGGCCAGGTTACCATCCTGGAAGGCG
 ACCCCGATGGGCAGTTCACCATCCGACGGACCCCAAGACCAACGAGGGTGTCTGTCCATTGTGAAGGC
 CCTGGACTATGAGAGCTGGAACACTACGAACTCAAAGTGTGGTGCAGAATGAGCCCCGCTGCAGGGC
 GCTGCCCTTAGGGCTGAGCGGGCCAGGCCAAGGTCCGCGTGCATGTGCAGGACACCAAGAGCCCCCG
 TGTTCCAGGAGAACCCTTCGACCAGCCTAGCAGAGGGGGCACCCCCAGGCACTTGGTGGCCACCTT
 CTTGCCCGGACCTGACACAGAGCAGCTGCAGAGGCTCAGCTACTCCAAGGACTACGACCCGGAAGAC
 TGCTGCAAGTGGACGCAGCCACTGGCCGATCCAGACCCAGCACGTGCTCAGCCCGCGTCCCCCTTCC
 TCAAGGGCGGCTGGTACAGAGCCATCGTCTGGCCAGGATGACGCTCCAGCCCCGACCGCCACCGG
 CACCCTGTCCATCGAGATCCTGGAGGTGAACGACCATGCACCTGTGCTGGCCCCGCCCGCCGGGAGC
 CTGTGCAGCGAGCCACCAAGGCCAGGCTCCTCCTGGGCGCCAGGATGAGGACCTGCCCCCAGC
 GGGCCCCCTTCCACTTCCAGCTGAGCCCCAGGCTCCCAGAGCTCGGCCGGAAGTGGAGCCTCAGCCAGT
 CAACGTGAGCCACGCGCCTGCGGCCGACACCAGTCCCCGAAGGCTGCACCGCTCAGCCTGCTG
 CTCGGGACTCGGGCAGCCGCCAGCAGCGAGCAGCCTCTGAACGTGACCGTGTGCCGCTGCGGCA
 AGGACCGCGTCTGCCTGCCGGGGCCGACGCGTCTGGCGGGGGCACAGGCCTCAGCCTGGGCGCACT
 GGTATCGTGTGGCCAGCGCCCTCCTGCTGCTGGTGTGGTCTGCTCGTGGCACTCCGGGCGCGGTTT
 TGGAAGCAGTCTCGGGCAAGGGGCTGCTGCACGGCCCCAGGACGACCTTCGAGACAATGCTCTCAACT
 ACGATGAGCAAGGAGGCGGGGAGGAGGACCAGGACGCTACGACATCAGCCAGTGCCTCACCCGACAGC
 GCTGAGCTGCCTCTGGGACCGCCGCACTTCGAGAGATGCCCCGAGGGCCGCTGCACCCAGCCA
 CCCCAGTGTGCCACAGCCCCCTGGACATCGCCGACTTCAATGATGGCTGGAGGCTGCAGATA
 GTGACCCAGTGTGCCCTTACGACACAGCCCTCATCTATGACTACGAGGTTGACGCTCGTGGCGGG
 GACCGTGAGCTCCATCTGTCCAGCCAGGGCGATGAGGACCAGGACTACGACTACCTCAGAGACTGGGG
 CCCCCTTCCCGGCTGGCAGACATGTATGGCACCCGTCGCGGTTGGAGTACGGGGCCAGATGGGACC
 ACCAGGCCAGGGAGGTTCTTCTCCTGGGCACTGCTACCCAGACACAGAGGCCGACAGCC

ACCGTACGCGGCCGCTCGAG – GFP Tag – GTTTAA

Protein Sequence: >RG201114 representing NM_004933
 Red=Cloning site Green=Tags(s)

```

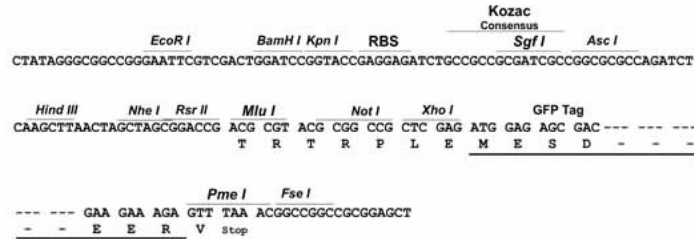
MDAAFLLVLGLLAQSLCLSLGVPGWRRPTTLYPWRRAPALSRVRRRAWVIPPISVSENHKRLPYPLVQIKS
DKQQLGSDVIYSIQGPGVDEEPRGVFSIDKFTGKVFLNAML DREKTRFRLRAFALDLGGSTLEDPTDLEI
VVVDQNDNRPAFLQEAF TGRVLEGAVPGTYVTRAEATDADDPETDNAALRFSILQQGSPELFSIDELTGE
IRTVQVGLDREVVAVYNLTQVADMSGDGLTATASAIITLDDINDNAPEFTRDEFFMEAIEAVSGVDVGR
LEVEDRDLPGSPNWARFTILEGDPDGQFTIRTPKTNEGVLSIVKALDYESCEHYELKVSQNEAPLQA
AALRAERGQAKVRVHVQDTNEPPVFQENPLRTSLAEGAPPGLVATFSARDPDTEQLQRLSYSKDYDPED
WLQVDAATGRIQTQHVLSPASPFLKGGWYRAIVLAQDDASQPRTATGTLSEIEILEVNDHAPVLAPPPPGS
LCSEPHQGPGLLLGATDEDLPPHGAPFHFQLSPRLPELGRNWSLSQVNVSHARLRPRHQVPEGLHRLSLL
LRDSGQPPQREQPLNVTVCRCGKDGVCPLGAAAALLAGGTGLSLGALVIVLASALLLVLLVALRARF
WKQSRGKGLLHGPQDDL RDNVLYDEQGGGEEDQDAYDISQLRHPTALSLPLGPPPLRRDAPQGRLHPQP
PRVLP TSP LDIADFINDGLEAADS DPSVPPYDTALIYDYEGDGSVAGTLSSILSSQGEDQDYDYL RDWG
PRFARLADMYGHPCGLEYGARWDHQAREGLSPGALLPRHRGRTA
  
```

TRTRPLE - GFP Tag - V

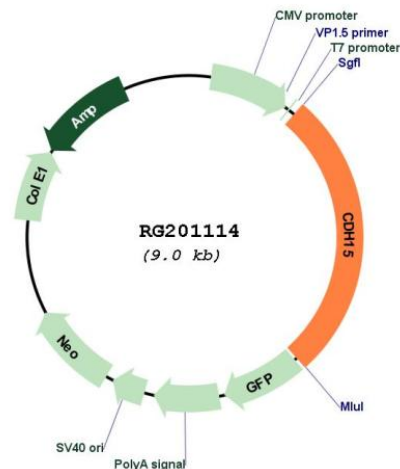
Restriction Sites: Sgfl-MluI

Cloning Scheme:

Cloning sites used for ORF Shutting:



Plasmid Map:



ACCN: NM_004933

ORF Size: 2442 bp

OTI Disclaimer: The molecular sequence of this clone aligns with the gene accession number as a point of reference only. However, individual transcript sequences of the same gene can differ through naturally occurring variations (e.g. polymorphisms), each with its own valid existence. This clone is substantially in agreement with the reference, but a complete review of all prevailing variants is recommended prior to use. [More info](#)

OTI Annotation: This clone was engineered to express the complete ORF with an expression tag. Expression varies depending on the nature of the gene.

Components: The ORF clone is ion-exchange column purified and shipped in a 2D barcoded Matrix tube containing 10ug of transfection-ready, dried plasmid DNA (reconstitute with 100 ul of water).

Reconstitution Method:

1. Centrifuge at 5,000xg for 5min.
2. Carefully open the tube and add 100ul of sterile water to dissolve the DNA.
3. Close the tube and incubate for 10 minutes at room temperature.
4. Briefly vortex the tube and then do a quick spin (less than 5000xg) to concentrate the liquid at the bottom.
5. Store the suspended plasmid at -20°C. The DNA is stable for at least one year from date of shipping when stored at -20°C.

RefSeq: [NM_004933.3](#)

RefSeq Size: 2875 bp

RefSeq ORF: 2445 bp

Locus ID: 1013

UniProt ID: [P55291](#)

Cytogenetics: 16q24.3

Protein Families: Transmembrane

Protein Pathways: Cell adhesion molecules (CAMs)

Gene Summary: This gene is a member of the cadherin superfamily of genes, encoding calcium-dependent intercellular adhesion glycoproteins. Cadherins consist of an extracellular domain containing 5 cadherin domains, a transmembrane region, and a conserved cytoplasmic domain. Transcripts from this particular cadherin are expressed in myoblasts and upregulated in myotubule-forming cells. The protein is thought to be essential for the control of morphogenetic processes, specifically myogenesis, and may provide a trigger for terminal muscle cell differentiation. [provided by RefSeq, Jul 2008]