

Product datasheet for **RG201111**

Cortactin (CTTN) (NM_138565) Human Tagged ORF Clone

Product data:

Product Type:	Expression Plasmids
Product Name:	Cortactin (CTTN) (NM_138565) Human Tagged ORF Clone
Tag:	TurboGFP
Symbol:	CTTN
Synonyms:	EMS1
Mammalian Cell Selection:	Neomycin
Vector:	pCMV6-AC-GFP (PS100010)
E. coli Selection:	Ampicillin (100 ug/mL)



[View online »](#)

ORF Nucleotide Sequence:

>RG201111 representing NM_138565
 Red=Cloning site Blue=ORF Green=Tags(s)

TTTTGTAATACGACTCACTATAGGGCGGCCGGAATTCGTCGACTGGATCCGGTACCGAGGAGATCTGCC
 GCC**CGGATCGCC**

ATGTGAAAGCTTCAGCAGGCCACGCTGTGTCCATCGCCAGGATGACGCGGGGGCCGATGACTGGGAGA
 CCGACCTGATTTGTGAATGATGTGAGTGAGAAGGAGCAAAGATGGGGTGCCAAGACGGTGCAGGGCTC
 CGGGCACAGGAGCATATCAACATACACAAGCTGAGGGAGAATGTCTTTCAAGAGCATCAGACCCTTAAG
 GAGAAGGAACTTGAAACAGGACAAAAGCTTCCCATGGCTATGGAGGAAATTTGGTGTGGAACAAGACC
 GAATGGATAAGTCAGCTGTGGCCACGAATATCAGTCGAACTTTCCAAGCACTGCTCGCAGGTGGACTC
 GGTCCGTGGCTTCGGAGGCAAGTTTGGTGTCCAGATGGACAGAGTTGATCAGTCTGCTGTAGGCTTTGAA
 TACCAGGGGAAGACTGAGAAGCATGCCTCCAGAAAGACTACTCCAGTGGTTTTGGCGGCAAGTATGGCG
 TGCAGGCCGACCGAGTAGACAAGAGCGCGGTGGGCTTCGACTACCAGGGCAAGACGGAGAAGCACGAGTC
 ACAGAGAGATTACTCAAAGTTTCGGCGGCAAATACGGTATCGACAAGGACAAAGTGGATAAGAGCGCC
 GTTGGCTTTGAGTATCAAGGCAAACGGAGAAGCACGAGTCCCAGAAAGACTATGTGAAAGGGTTTGGAG
 GAAAATTTGGTGTGCAGACAGACAGACAAGACAATGTGCCCTTGGCTGGGATCACCAGGAGAAATTGCA
 GCTGCATGAATCCAAAAAGACTACTCCAAAGGATTCGGCGGGAAGTATGGGGTGCAAGAGGATCGGATG
 GATAAGAATGCGTCAACCTTTGAGGATGTACCCAGGTGTCTCTGCCTACCAGAAGACAGTACCTGTGC
 AAGCTGTGACCAGCAAAACAAGTAAATCAGAGCTAACTTTGAAAACCTCGTAAGGAGAAAAGAGCAGGA
 GGACAGGCGGAAGGCGGAGGCGGAGAGAGCCAGCGGATGGCCAAGGAGCGGCAGGAGCAGGAAGAGGCC
 AGGAGGAAGCTGGAGGAGCAAGCCAGAGCCAAAACGCAAAACGCCCTGTGTCGCCCGCACCTCAGCCAA
 CCGAGGAGAGGCTGCCCTCGAGCCCGTCTATGAGGATGCGGCTTCCTTCAAGGCAGAGCTGAGCTACAG
 AGGCCCTGTGAGTGGGACGGAGCCGAGCCCGTGTACAGCATGGAGGCCGCTGACTACCGAGAGGCCAGC
 AGCCAGCAGGGCCTGGCCTATGCCACAGAGGCTGTCTATGAAAGCGCAGAGGCCCGGGCCACTATCCCG
 CAGAGGACAGCACCTATGATGAGTACGAGAACGATCTGGGGATCACAGCCGTCGCCCTGTACGACTACCA
 GGCTGCGGGCGATGATGAGATCTCATTTGACCCTGATGACATCATACCAACATCGAGATGATTGACGAC
 GGCTGGTGGCGGGGTGTGCAAGGGCCGTACGGGCTCTCCAGCCAACATATGTGGAGCTGCGGCAG

ACGCGTACGCGGCCGCTCGAG - GFP Tag - GTTTAA

Protein Sequence:

>RG201111 representing NM_138565
 Red=Cloning site Green=Tags(s)

MWKASAGHAVSIAQDDAGADDWETDPDFVNDVSEKEQRWGAKTVQGSQHQEHINIHKLRENVFQEHQTLK
 EKELETGPKASHGYGGKFGVEQDRMDKSAVGHEYSKLSKHCSQVDSVRGFGGKFGVQMDRVDQSAVGFE
 YQGKTEKHASQKDYSSFGGKYGVQADRVDKSAVGFQYQKTEKHESQRDYSKFGGKYIDKDKVDKSA
 VGFYQGKTEKHESQKDYVKGFGKFGVQTDKCALGWDHQEKLQLHESQKDYSGKFGGKYGVQKDRM
 DKNASTFEDVTQVSSAYQKTPVPEAVTSKTSNIRANFENLAKEKEQEDRRKAEAEARAQRMAKERQEQEEA
 RRKLEEQARAKTQTPVSPAPQPTTEERLPSSPVYEDAASFKAELSYRGPVSGTEPEPVYSMEAADYREAS
 SQQGLAYATEAVYESAEAPGHYPAEDSTYDEYENDLGITAVALYDQAAGDDEISFDPDDIITNIEMIDD
 GWWRGVCKGRYGLFPANYVELRQ

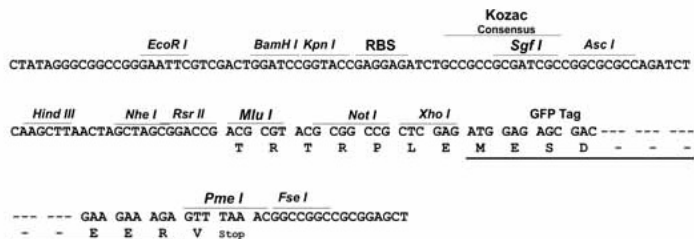
TRTRPLE - GFP Tag - V

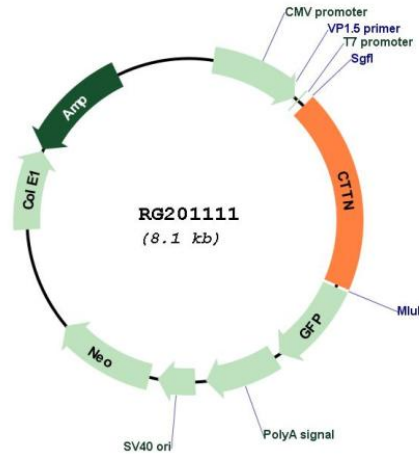
Restriction Sites:

Sgfl-Mlul

Cloning Scheme:

Cloning sites used for ORF Shutting:



Plasmid Map:


ACCN: NM_138565

ORF Size: 1539 bp

OTI Disclaimer: The molecular sequence of this clone aligns with the gene accession number as a point of reference only. However, individual transcript sequences of the same gene can differ through naturally occurring variations (e.g. polymorphisms), each with its own valid existence. This clone is substantially in agreement with the reference, but a complete review of all prevailing variants is recommended prior to use. [More info](#)

OTI Annotation: This clone was engineered to express the complete ORF with an expression tag. Expression varies depending on the nature of the gene.

Components: The ORF clone is ion-exchange column purified and shipped in a 2D barcoded Matrix tube containing 10ug of transfection-ready, dried plasmid DNA (reconstitute with 100 ul of water).

Reconstitution Method:

1. Centrifuge at 5,000xg for 5min.
2. Carefully open the tube and add 100ul of sterile water to dissolve the DNA.
3. Close the tube and incubate for 10 minutes at room temperature.
4. Briefly vortex the tube and then do a quick spin (less than 5000xg) to concentrate the liquid at the bottom.
5. Store the suspended plasmid at -20°C. The DNA is stable for at least one year from date of shipping when stored at -20°C.

RefSeq: [NM_138565.1](#), [NP_612632.1](#)

RefSeq Size: 3176 bp

RefSeq ORF: 1542 bp

Locus ID: 2017

UniProt ID: [Q14247](#)

Cytogenetics: 11q13.3

Protein Families: Druggable Genome

Protein Pathways: Pathogenic Escherichia coli infection, Tight junction

Gene Summary: This gene is overexpressed in breast cancer and squamous cell carcinomas of the head and neck. The encoded protein is localized in the cytoplasm and in areas of the cell-substratum contacts. This gene has two roles: (1) regulating the interactions between components of adherens-type junctions and (2) organizing the cytoskeleton and cell adhesion structures of epithelia and carcinoma cells. During apoptosis, the encoded protein is degraded in a caspase-dependent manner. The aberrant regulation of this gene contributes to tumor cell invasion and metastasis. Three splice variants that encode different isoforms have been identified for this gene. [provided by RefSeq, May 2010]