

## Product datasheet for **RG201102**

### DHRS2 (NM\_182908) Human Tagged ORF Clone

#### Product data:

Product Type:	Expression Plasmids
Product Name:	DHRS2 (NM_182908) Human Tagged ORF Clone
Tag:	TurboGFP
Symbol:	DHRS2
Synonyms:	HEP27; SDR25C1
Mammalian Cell Selection:	Neomycin
Vector:	pCMV6-AC-GFP (PS100010)
E. coli Selection:	Ampicillin (100 ug/mL)
ORF Nucleotide Sequence:	>RG201102 representing NM_182908 Red=Cloning site Blue=ORF Green=Tags(s)

TTTGTGTAATACGACTCACTATAGGGCGGCCGGAATTCGTCGACTGGATCCGGTACCGAGGAGATCTGCC  
 GCC**CGATCGCC**

ATGCTGTCAGCAGTTGCCCGGGCTACCAGGGCTGGTTTCATCCCTGTGCTAGGCTTTCTGTGAGGATGA  
 GCAGCACCGGGATAGACAGGAAGGGCGTCCTGGCTAACCGGGTAGCCGTGGTCACGGGGTCCACAGTGG  
 GATCGGCTTTGCCATCGCCGACGTCTGGCCGGGACGGGGCCACGTGGTCATCAGCAGCCGGAAGCAG  
 CAGAACGTGGACCGGGCCATGGCCAAGCTGCAGGGGGAGGGGCTGAGTGTGGCGGGCATTGTGTGCCACG  
 TGGGGAAGGCTGAGGACCGGGAGCAGCTGGTGGCCAAGGCCCTGGAGCACTGTGGGGCGTCGACTTCCT  
 GGTGTGCAGCGCAGGGGTCAACCTCTGGTAGGGAGCACTCTGGGGACCACTGAGCAGATCTGGGACAAG  
 ATCCTAAGTGTGAACGTGAAGTCCCCAGCCCTGCTGCTGAGCCAGTTGCTGCCCTACATGGAGAACAGGA  
 GGGGTGCTGTATCCTGGTCTCTTCCATTGCAGCTTATAATCCAGTAGTGGCGCTGGGTGTCTACAATGT  
 CAGCAAGACAGCGCTGCTGGGTCTCACTAGAACACTGGCATTGGAGCTGGCCCCAAGGACATCCGGGTA  
 AACTGCGTGGTTCCAGGAATTATCAAACTGACTTCAGCAAAGTGGTGAGGATTGGTTTCATGGGAATGA  
 GTCTCTCTGGAAGAACTCAAGGAACATCATCAGCTGCAGAGGATTGGGGAGTCAGAGGACTGTGCAGGA  
 ATCGTGTCTTCTGTGCTCTCCAGATGCCAGCTACGTCAACGGGGAGAACATTGCGGTGGCAGGCTACT  
 CCACTCGGCTCTGAGAGGAGTGGGGCGGCTGCGTAGCTGTGGTCCCAGGCCAGGAGCC

**ACGCGT**ACGCGGCCGCTCGAG - GFP Tag - GTTTAA


[View online »](#)

**Protein Sequence:** >RG201102 representing NM\_182908  
 Red=Cloning site Green=Tags(s)

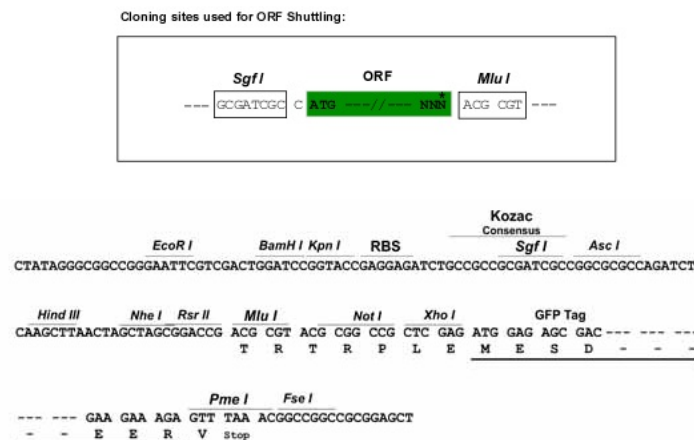
MLSAVARGYQGWFHPCARLSVRMSSTGIDRKGVLNRVAVVTGSTSGIGFAIARRLRDGAHVVISSRKQ  
 QNVDRAMAKLQGEGLSVAGIVCHVGKAEDREQLVAKALEHCGGVDFLVCSAGVNPLVGSTLGTSEQIWDK  
 ILSVNVKSPALLLSQLPYMENRRGAVILVSSIAAYNPVVALGVYVNSKTALLGLTRTLALELAPKDIRV  
 NCVVPGIIKTDFSKVVRIGFMGMSLSGRTSRNIISCRGLGSQRTVQESCPSCALQMPATSTGRTLRLWQAT  
 PLGSERSGGGCVAVVPGPGA

TRTRPLE - GFP Tag - V

**Chromatograms:** [https://cdn.origene.com/chromatograms/ja1921\\_a03.zip](https://cdn.origene.com/chromatograms/ja1921_a03.zip)

**Restriction Sites:** SgfI-MluI

**Cloning Scheme:**



**ACCN:** NM\_182908

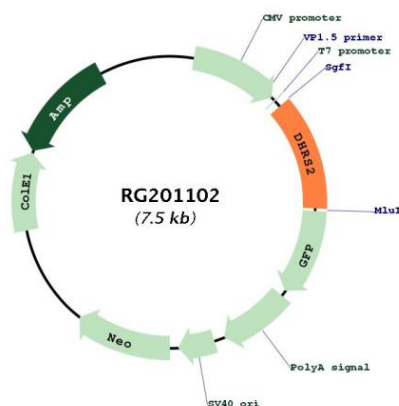
**ORF Size:** 900 bp

**OTI Disclaimer:** Due to the inherent nature of this plasmid, standard methods to replicate additional amounts of DNA in E. coli are highly likely to result in mutations and/or rearrangements. Therefore, OriGene does not guarantee the capability to replicate this plasmid DNA. Additional amounts of DNA can be purchased from OriGene with batch-specific, full-sequence verification at a reduced cost. Please contact our customer care team at [custsupport@origene.com](mailto:custsupport@origene.com) or by calling 301.340.3188 option 3 for pricing and delivery.

The molecular sequence of this clone aligns with the gene accession number as a point of reference only. However, individual transcript sequences of the same gene can differ through naturally occurring variations (e.g. polymorphisms), each with its own valid existence. This clone is substantially in agreement with the reference, but a complete review of all prevailing variants is recommended prior to use. [More info](#)

<b>OTI Annotation:</b>	This clone was engineered to express the complete ORF with an expression tag. Expression varies depending on the nature of the gene.
<b>Components:</b>	The ORF clone is ion-exchange column purified and shipped in a 2D barcoded Matrix tube containing 10ug of transfection-ready, dried plasmid DNA (reconstitute with 100 ul of water).
<b>Reconstitution Method:</b>	<ol style="list-style-type: none"> <li>1. Centrifuge at 5,000xg for 5min.</li> <li>2. Carefully open the tube and add 100ul of sterile water to dissolve the DNA.</li> <li>3. Close the tube and incubate for 10 minutes at room temperature.</li> <li>4. Briefly vortex the tube and then do a quick spin (less than 5000xg) to concentrate the liquid at the bottom.</li> <li>5. Store the suspended plasmid at -20°C. The DNA is stable for at least one year from date of shipping when stored at -20°C.</li> </ol>
<b>RefSeq:</b>	<u>NM_182908.4</u>
<b>RefSeq Size:</b>	1688 bp
<b>RefSeq ORF:</b>	903 bp
<b>Locus ID:</b>	10202
<b>UniProt ID:</b>	<u>Q13268</u>
<b>Cytogenetics:</b>	14q11.2
<b>Protein Families:</b>	Druggable Genome
<b>Gene Summary:</b>	This gene encodes a member of the short-chain dehydrogenases/reductases (SDR) family, which has over 46,000 members. Members of this family are enzymes that metabolize many different compounds, such as steroid hormones, prostaglandins, retinoids, lipids and xenobiotics. Alternative promoter use and alternative splicing results in multiple transcript variants. [provided by RefSeq, Feb 2017]

## Product images:



Circular map for RG201102