

Product datasheet for **RG201069**

CDC42EP3 (NM_006449) Human Tagged ORF Clone

Product data:

Product Type:	Expression Plasmids
Product Name:	CDC42EP3 (NM_006449) Human Tagged ORF Clone
Tag:	TurboGFP
Symbol:	CDC42EP3
Synonyms:	BORG2; CEP3; UB1
Mammalian Cell Selection:	Neomycin
Vector:	pCMV6-AC-GFP (PS100010)
E. coli Selection:	Ampicillin (100 ug/mL)
ORF Nucleotide Sequence:	>RG201069 representing NM_006449 Red=Cloning site Blue=ORF Green=Tags(s)

TTTGTAAATACGACTCACTATAGGGCGGCCGGAATTCGTCGACTGGATCCGGTACCGAGGAGATCTGCC
 GCC**CGATCGCC**

ATGCCAGCCAAGACCCCAATTTACCTGAAAGCAGCCAATAACAAGAAAGGAAAGAAATTTAACTGAGGG
 ACATTCTGTCTCCTGATATGATCAGTCCCCGCTTGGAGACTTTCGCCACACCATCCACATTGGCAAAGA
 GGGCCAGCACGATGTCTTTGGAGATATTTCTTTCTTCAAGGGAACACGAGCTTTACCTGGAACCCAG
 GAGAAAGCACACCTGGGCCAGTTCCTGGGCATAATGAGTTCTTCCGGGCCAACAGCACCTCGGACTCTG
 TGTTACAGAAACGCCCTCCCCGGTGCTCAAAAATGCCATCTCCCTCCCGACCATTGGAGGATCCCAAGC
 TCTCATGTTGCCCTTATTGTACACAGTGACATTTAATTCCAAACAGGAGTCCCTTCGGGCCAGCAAAGCTG
 CCCAGGCTTAGCTGCGAGCCCGTCATGGAGGAAAAAGCTCAGGAGAAAAGCAGTCTGTTGGAGAATGGGA
 CAGTCCACCAGGGAGACACCTCGTGGGGCTCCAGCGGTTCTGCATCTCAGTCCAGCCAAGGCAGAGACAG
 CCACTCTCCAGCCTGTCCGAACAGTACCCGACTGGCCAGCCGAGGACATGTTTGACCATCCACCCCA
 TGCAGCTCATCAAGGAAAGACTAAGTCAGAGGAGTCCCTCTCTGACCTTACAGGTTCCCTCCTCTCCC
 TGCAGCTTGATCTTGGGCCCTCACTTTTGGATGAGGTGCTGAATGTAATGGATAAAAATAAG

ACGCGTACGCGGCCGCTCGAG - GFP Tag - GTTTAA


[View online »](#)

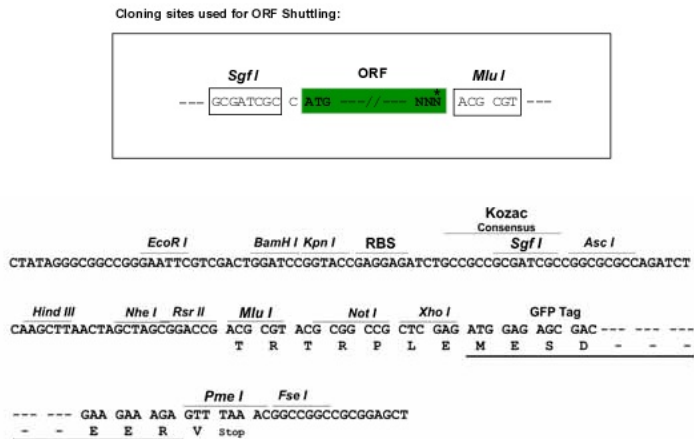
Protein Sequence: >RG201069 representing NM_006449
 Red=Cloning site Green=Tags(s)

MPAKTPIYLKAANNKKGKKFKLRDILSPDMISPLGDFRHTIHIGKEGQHDVFGDISFLQGNIELLPGNQ
 EKAHLGQFPGHNEFFRANSTSDSVFTETPSPVLKNAISLPTIGGSQALMLPLLSPVTFNSKQESFGPAKL
 PRLSCEPVMEEKAQEKSSLLENGTVHQGDTSWGSSGSASQSSQGRDSSHSSSLSEQYPDWPAEDMFDHPTP
 CELIKGKTKSEESLSDLTGSLLSLQLDLGPSLLDEVLNVM DNK

TRTRPLE – GFP Tag – V

Restriction Sites: SgfI-MluI

Cloning Scheme:



ACCN: NM_006449

ORF Size: 762 bp

OTI Disclaimer: The molecular sequence of this clone aligns with the gene accession number as a point of reference only. However, individual transcript sequences of the same gene can differ through naturally occurring variations (e.g. polymorphisms), each with its own valid existence. This clone is substantially in agreement with the reference, but a complete review of all prevailing variants is recommended prior to use. [More info](#)

OTI Annotation: This clone was engineered to express the complete ORF with an expression tag. Expression varies depending on the nature of the gene.

Components: The ORF clone is ion-exchange column purified and shipped in a 2D barcoded Matrix tube containing 10ug of transfection-ready, dried plasmid DNA (reconstitute with 100 ul of water).

Reconstitution Method:

1. Centrifuge at 5,000xg for 5min.
2. Carefully open the tube and add 100ul of sterile water to dissolve the DNA.
3. Close the tube and incubate for 10 minutes at room temperature.
4. Briefly vortex the tube and then do a quick spin (less than 5000xg) to concentrate the liquid at the bottom.
5. Store the suspended plasmid at -20°C. The DNA is stable for at least one year from date of shipping when stored at -20°C.

Note: Plasmids are not sterile. For experiments where strict sterility is required, filtration with 0.22um filter is required.

RefSeq: [NM_006449.5](#)

RefSeq Size: 3981 bp

RefSeq ORF: 765 bp

Locus ID: 10602

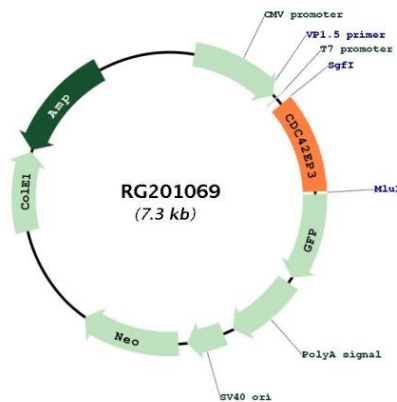
UniProt ID: [Q9UKI2](#)

Cytogenetics: 2p22.2

Domains: PBD

Gene Summary: This gene encodes a member of a small family of guanosine triphosphate (GTP) metabolizing proteins that contain a CRIB (Cdc42, Rac interactive binding) domain. Members of this family of proteins act as effectors of CDC42 function. The encoded protein is involved in actin cytoskeleton re-organization during cell shape changes, including pseudopodia formation. A pseudogene of this gene is found on chromosome 19. Alternative splicing results in multiple transcript variants. [provided by RefSeq, Jul 2012]

Product images:



Circular map for RG201069