

Product datasheet for **RG201056**

ARMCX6 (NM_001009584) Human Tagged ORF Clone

Product data:

Product Type:	Expression Plasmids
Product Name:	ARMCX6 (NM_001009584) Human Tagged ORF Clone
Tag:	TurboGFP
Symbol:	ARMCX6
Synonyms:	GASP10
Mammalian Cell Selection:	Neomycin
Vector:	pCMV6-AC-GFP (PS100010)
E. coli Selection:	Ampicillin (100 ug/mL)
ORF Nucleotide Sequence:	>RG201056 representing NM_001009584 Red=Cloning site Blue=ORF Green=Tags(s)

TTTTGTAATACGACTCACTATAGGGCGGCCGGAATTCGTCGACTGGATCCGGTACCGAGGAGATCTGCC
GCC**CGATCGCC**

ATGGGCCGGGCTCGGGAAGTGGGTTGGATGGCGGCAGGACTGATGATTGGGGCTGGTGCCTGCTACTGCG
TTTACAACTGACCATAGGAAGAGATGACAGTGAGAAGCTGGAGGAGGAGGGGAAGAGGAGTGGGACGA
TGACCAGGAGCTGGATGAGGAGGAGCCTGATATTTGGTTGATTTGAACTATGGCTCGGCCCTGGACT
GAGGATGGGATTGGACTGAACCTGGGGCCCCAGGTGGCACTGAGGACAGGCCCTCAGGGGAGGCAAGG
CCAACCGAGCACCCAATAAAACAGCGGCCATTCCCCTATGAACATAAAAATACTTGGAGTGCTCAAAA
TTGTAAAAATGGCAGTTGTGTTCTGGACCTCTCCAAGTGTCTTTTCATTACAGGAAAAGTGTGTTGGCC
GAGCCCAAGGATGCGGGCTTTCCATTTAGCCAGGATATCAATAGCCATTTGGCCAGCCTCTCAATGGCTA
GAAACACGAGCCCCACTCCAGACCCCCTGTTAGAGAGGCTTTGTGTGCCCCGGATAACTTAAATGCGAG
TATTGAAAGTCAGGGCCAGATTAAGATGTACATCAATGAAGTGTGTGGGAGACTGTGTCACGTTGCTGC
AACTCATTTCTGCAGCAGGCCGATTAATTTGTTAATAAGCATGACAGTTATTAATAACATGCTTGCCA
AGTCCGCTTCAGACTTGAAGTTTCCTTTGATATCAGAGGGAAGTGGATGTGCTAAGGTTCCAGTTTTGAA
ACCGCTGATGGGTTTGTCTGAAAAGCCAGTCTTGGCGGGGAGTTAGTCGGTGCCAGATGCTCTTCTCA
TTCATGTCCCTCTTATCAGAAATGAAACAGAGAGATTCTCTGAAACCCCTGCCCA

ACGCGTACGCGGCCGCTCGAG - GFP Tag - GTTTAA



[View online »](#)

Protein Sequence: >RG201056 representing NM_001009584
 Red=Cloning site Green=Tags(s)

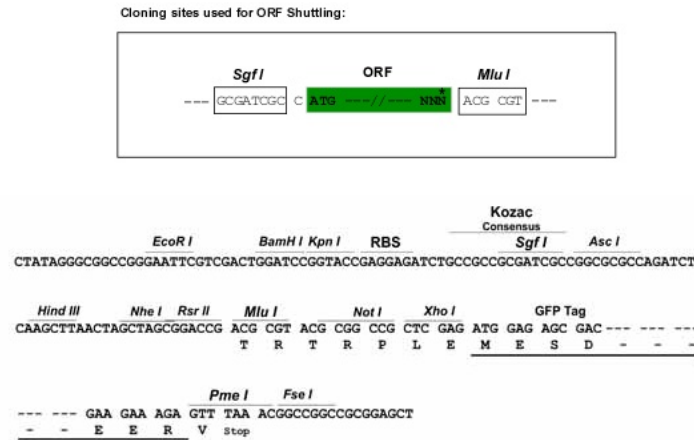
MGRAREVGMMAAGLMIGAGACYCVYKLTIGRDDSEKLEEEGEEWDDQELDEEPPDIWDFETMARPWT
 EDGDWTEPGAPGGTEDRPSGGGKANRAHPKQRPFPYEHKNTWSAQNCCKNGSCVLDL SKCLFIQGKLLFA
 EPKDAGFPFSQDINSHLASL SMARNTSPTPDPTVREALCAPDNLNASIESQGQIKMYINEVCRETVSRCC
 NSFLQQAGLNLLISMTVINMLAKSASDLKFLISEGSGCAKVQVLKPLMGLSEKPVLAGELVGAQMLFS
 FMSLFIRNGNREILLETPAP

TRTRPLE - GFP Tag - V

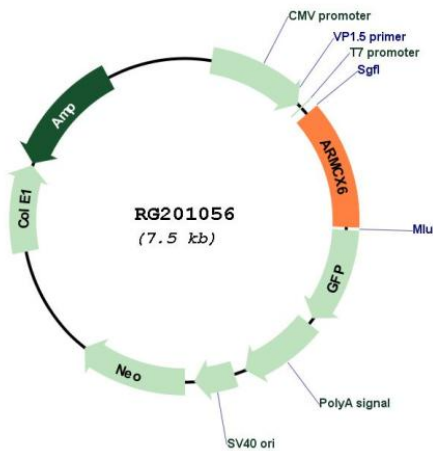
Restriction Sites:

SgfI-MluI

Cloning Scheme:



Plasmid Map:



ACCN: NM_001009584

ORF Size: 900 bp

OTI Disclaimer:	The molecular sequence of this clone aligns with the gene accession number as a point of reference only. However, individual transcript sequences of the same gene can differ through naturally occurring variations (e.g. polymorphisms), each with its own valid existence. This clone is substantially in agreement with the reference, but a complete review of all prevailing variants is recommended prior to use. More info
OTI Annotation:	This clone was engineered to express the complete ORF with an expression tag. Expression varies depending on the nature of the gene.
Components:	The ORF clone is ion-exchange column purified and shipped in a 2D barcoded Matrix tube containing 10ug of transfection-ready, dried plasmid DNA (reconstitute with 100 ul of water).
Reconstitution Method:	<ol style="list-style-type: none">1. Centrifuge at 5,000xg for 5min.2. Carefully open the tube and add 100ul of sterile water to dissolve the DNA.3. Close the tube and incubate for 10 minutes at room temperature.4. Briefly vortex the tube and then do a quick spin (less than 5000xg) to concentrate the liquid at the bottom.5. Store the suspended plasmid at -20°C. The DNA is stable for at least one year from date of shipping when stored at -20°C.
RefSeq:	NM_001009584.1 , NP_001009584.1
RefSeq Size:	1783 bp
RefSeq ORF:	903 bp
Locus ID:	54470
UniProt ID:	Q7L4S7
Cytogenetics:	Xq22.1
Protein Families:	Transmembrane
Gene Summary:	May regulate the dynamics and distribution of mitochondria in neural cells.[UniProtKB/Swiss-Prot Function]