

## Product datasheet for **RG201051**

### COMMD5 (NM\_001081004) Human Tagged ORF Clone

#### Product data:

Product Type:	Expression Plasmids
Product Name:	COMMD5 (NM_001081004) Human Tagged ORF Clone
Tag:	TurboGFP
Symbol:	COMMD5
Synonyms:	HCARG; HT002
Mammalian Cell Selection:	Neomycin
Vector:	pCMV6-AC-GFP (PS100010)
E. coli Selection:	Ampicillin (100 ug/mL)
ORF Nucleotide Sequence:	>RG201051 representing NM_001081004 Red=Cloning site Blue=ORF Green=Tags(s)

TTTTGTAATACGACTCACTATAGGGCGCCGGGAATTCGTCGACTGGATCCGGTACCGAGGAGATCTGCC  
GCC**CGATCGCC**

ATGTCTGCTGTGGGGCTGCAACTCCATACCTGCATCATCCTGGTGATAGTCACAGTGGCCGAGTGAGTT  
TCTTGGGGGCCAGCTTCTCCAGAGGTGGCAGCAATGGCCGGCTACTAGGGGACCTAGACAGGAGCAC  
GTTCAGAAAGTTGCTGAAGTTTGTGGTCAGCAGCCTGCAGGGGAGGACTGCCGAGAGGCTGTGCAGCGT  
CTTGGGGTCAGCGCAACCTGCCGGAGGAGCAGCTGGGTGCCCTGCTGGCAGGCATGCACACTGCTCC  
AGCAGGCCCTCCGTCTGCCCCCACCAGCCTGAAGCCTGACACCTCAGGGACCAGCTCCAGGAGCTCTG  
CATCCCCAAGACCTGGTCGGGGACTTGGCCAGCGTGGTATTTGGGAGCCAGCGGCCCTCTTGATTCT  
GTGGCCAGCAGCAGGGGCTGGCTGCCGCATGTTGCTGACTTTCGGTGGCGGGTGGATGTAGCAATCT  
CCACCAGTGCCCTGGCTCGCTCCCTGCAGCCGAGCGTCTGATGCAGCTGAAGCTTTCAGATGGGTGAGC  
ATACCGCTTTGAGGTCCCACAGCCAAGTTCCAGGAGCTGCGGTACAGCGTGGCCCTGGTCTAAAGGAG  
ATGGCAGATCTGGAGAAGAGGTGTGAGCGCAGACTGCAGGAC

**ACGCGT**ACGCGGGCCGCTCGAG - GFP Tag - GTTTAA



[View online »](#)

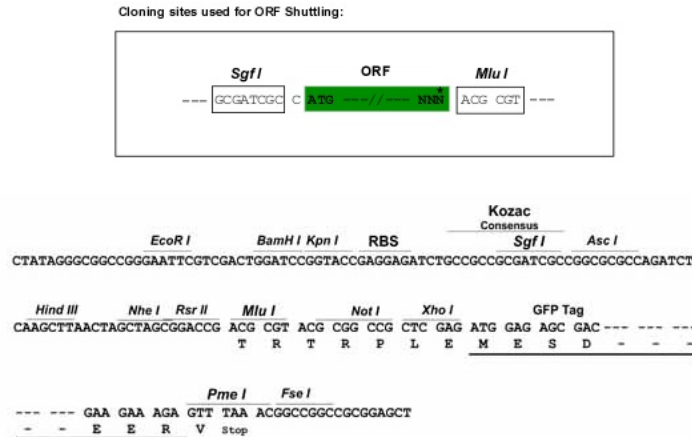
**Protein Sequence:** >RG201051 representing NM\_001081004  
 Red=Cloning site Green=Tags(s)

MSAVGAATPYLHHPGDSHSGRVSFLGAQLPPEVAAMARLLGDLDRSTFRKLLKFVSSSLQGEDCREAVQR  
 LGVSANLPEEQLGALLAGMHTLLQQALRLPPTSLKPDTRDQLQELCIPQDLVGDLASVVFSGSRPLLD  
 VAQQQGAWLPHVADFRWRVDVAISTALARSLQPSVLMQLKLSDGSAYRFEVPTAKFQELRYSVALVLKE  
 MADLEKRCERRLQD

TRTRPLE - GFP Tag - V

**Restriction Sites:** SgfI-MluI

**Cloning Scheme:**



**ACCN:** NM\_001081004

**ORF Size:** 672 bp

**OTI Disclaimer:** The molecular sequence of this clone aligns with the gene accession number as a point of reference only. However, individual transcript sequences of the same gene can differ through naturally occurring variations (e.g. polymorphisms), each with its own valid existence. This clone is substantially in agreement with the reference, but a complete review of all prevailing variants is recommended prior to use. [More info](#)

**OTI Annotation:** This clone was engineered to express the complete ORF with an expression tag. Expression varies depending on the nature of the gene.

**Components:** The ORF clone is ion-exchange column purified and shipped in a 2D barcoded Matrix tube containing 10ug of transfection-ready, dried plasmid DNA (reconstitute with 100 ul of water).

**Reconstitution Method:**

1. Centrifuge at 5,000xg for 5min.
2. Carefully open the tube and add 100ul of sterile water to dissolve the DNA.
3. Close the tube and incubate for 10 minutes at room temperature.
4. Briefly vortex the tube and then do a quick spin (less than 5000xg) to concentrate the liquid at the bottom.
5. Store the suspended plasmid at -20°C. The DNA is stable for at least one year from date of shipping when stored at -20°C.

**RefSeq:** [NM\\_001081004.3](#)

**RefSeq Size:** 1320 bp

**RefSeq ORF:** 675 bp

**Locus ID:** 28991

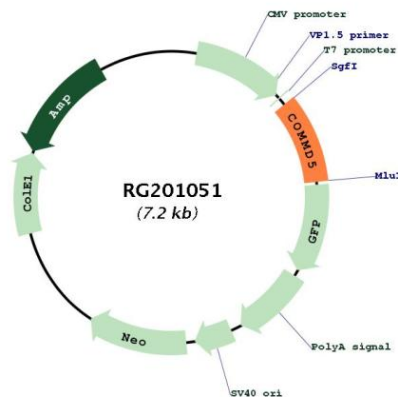
**UniProt ID:** [Q9GZQ3](#)

**Cytogenetics:** 8q24.3

**Protein Families:** Druggable Genome

**Gene Summary:** May modulate activity of cullin-RING E3 ubiquitin ligase (CRL) complexes (PubMed:21778237). Negatively regulates cell proliferation. Negatively regulates cell cycle G2/M phase transition probably by transactivating p21/CDKN1A through the p53/TP53-independent signaling pathway. Involved in kidney proximal tubule morphogenesis (By similarity). Down-regulates activation of NF-kappa-B (PubMed:15799966).[UniProtKB/Swiss-Prot Function]

## Product images:



Circular map for RG201051