

## Product datasheet for **RG201050**

### **KBTBD4 (NM\_016506) Human Tagged ORF Clone**

#### **Product data:**

Product Type:	Expression Plasmids
Product Name:	KBTBD4 (NM_016506) Human Tagged ORF Clone
Tag:	TurboGFP
Symbol:	KBTBD4
Synonyms:	BKLHD4; HSPC252
Mammalian Cell Selection:	Neomycin
Vector:	pCMV6-AC-GFP (PS100010)
E. coli Selection:	Ampicillin (100 ug/mL)



[View online »](#)

**ORF Nucleotide Sequence:**

>RG201050 representing NM\_016506  
 Red=Cloning site Blue=ORF Green=Tags(s)

TTTTGTAATACGACTCACTATAGGGCGGCCGGGAATTCGTCGACTGGATCCGGTACCGAGGAGATCTGCC  
 GCC**CGGATCGCC**

ATGGAATCACCAGAGGAGCCTGGAGCATCCATGGATGAGAACTACTTTGTGAACTACACTTTCAAAGATC  
 GGTACATTTCAGGCCGTGTGGCTCAAGGCATCATGAAACTGTGTCTAGAGGAGGAGCTCTTTGCTGATGT  
 CACCATTTTCGGTGAAGGCCGGGAGTTTCAGCTCCATCGGCTGGTCTCTCAGCTCAGAGCTGCTTCTTC  
 CGATCCATGTTCACTTCCAACCTGAAGGAGGCCACAACCGGGTATTGTGCTGCAGGATGTCAGCGAGT  
 CTGTTTTCCAGCTCCTGGTTGATTATATCTACCATGGGACTGTGAACTTCGAGCTGAGGAGTTGCAGGA  
 AATTTATGAGGTGTCAGACATGTATCAGCTGACATCTCTTTGAGGAATGCTCTCGTTTTTTGGCCCGC  
 ACAGTGAAGTGGGAACTGCCTTCAGGTGATGTGGCTGGCAGATCGGCACAGTATCCTGAGCTCTATA  
 CGGCTGCCAAGCACTGTCCAAGACCCACCTGGCCAGCTGCAGAATACAGAGGAATTTCTCCACTTGCC  
 CCACCGCTTACTCACAGATATCATCTCGGATGGAGTTCGGTGTCTCAGAACCCAAACAGAGGCAATAGAA  
 GCCTGGATCAACTTTAATAAAGAGGAAAGAGAGGCTTTTGCAGAGTCACTCAGGACAAGCTTGAAGGAAA  
 TTGGGGAGAATGTGCACATTTACCTGATTGGGAAAGAGTCATCTCGTACCCACTCGTTGGCTGTGTCCTT  
 GCACTGTGCAGAAGTACTCCATCAGTGAAGTGGCCAAAACAGTTTGTGCCACCATGACTGCGGCC  
 TGCAAGCATGGTGGAGACTTGTATGTGGTGGGAGGGTCCATCCCACGGCGCATGTGGAAGTGAACAATG  
 CCACCGTTGACTGGGAGTGGTGTCTCTTTGCCTCGGGACCGGCTCCAGCACACCCTGGTGTCTGTGCC  
 CGGAAAGATGCCATATTTCACTGGGTGGCAAGACACTGCAAGATACCTCTCCAACGCAGTCAATTTAT  
 TATCGCGTAGGTGATAATGTGTGGACAGAGACAACACTCAGCTAGAGGTGGCTGTGTGAGGGCTGCTGGTG  
 CCAACTCAACGGGATCATCTACTTACTAGGGGGGAGGAGAATGATCTGGACTTCTTTACCAAACCTTC  
 CCGACTCATCCAGTGCTTTGACACAGAGACACAATGCCATGTGAAGCCCTATGTGCTGCCCTTTGCA  
 GGCCGCATGCACGCAGCTGTGCATAAAGATCTGGTGTTCATCGTGGCTGAAGGGGACTCCCTGGTGTGCT  
 ACAATCCCTTGCTAGACAGCTTACCCGGCTTTGCCTTCTGAGGCCTGGAGCTCTGCCCATCCCTCTG  
 GAAGATTGCCAGCTGTAAACGGGAGCATCTATGTCTCCGGGACCGATATAAAAAGGGGGATGCCAACACC  
 TACAAGCTTGACCCTGCCACTTCAGCCGTAAGTGTACAAAGAGGATTAAGGTGCTGCTTACCAATTTGC  
 AGTTTGTGTTGGCC

**ACGCGTACGCGGCCGCTCGAG** - GFP Tag - GTTTAA

**Protein Sequence:**

>RG201050 representing NM\_016506  
 Red=Cloning site Green=Tags(s)

MESPEEPGASMDENYFVNYTFKDRSHSGRVAQGIIMKLCLEELFADVTISVEGREFQLHRLVLSAQSCFF  
 RSMFTSNLKEAHRVIVLQDVSESVFQLLVYDIYHGTVKLRAEELQEIEVSDMYQLTSLFEECSRFLAR  
 TVQVGNCLQVMWLANDRHSPELYTAAKHCAKTHLAQLQNTTEFLHLPRLTLDIISDGVPCSQNPTEAIE  
 AWINFNKEEREAFESLRTSLKEIGENVHIYLIKESRTHSLAVSLHCAEDDSISVSGQNSLCHQITAA  
 CKHGGDLVYVGGSIIPRMWKCNNATVDWEWCAPLPRDRLQHTLVSVPGKDAIYSLGGKTLQDTLSNAVIY  
 YRVGDNVWTEETQLEVAVSGAAGANLNGIYLLGGEENDLDFFTKPSRLIQCFDTETDKCHVKPYVLPFA  
 GRMHAHVHKLDFIVAEGDSLVCYNPLLDLDFTRLCLPEAWSSAPSLWKIASCNGSIYVFRDRYKKGDANT  
 YKLDPATSAVTVTRGIKVLTLNLQFVLA

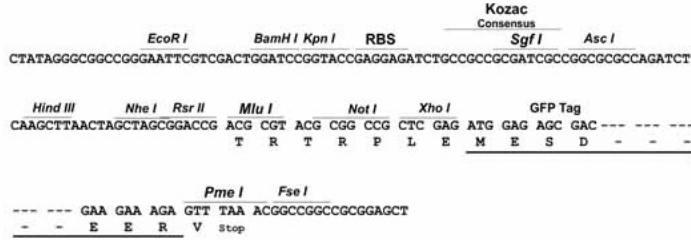
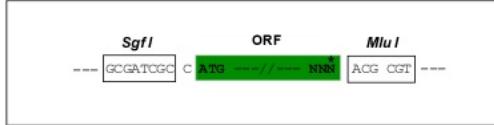
**TRTRPLE** - GFP Tag - V

**Restriction Sites:**

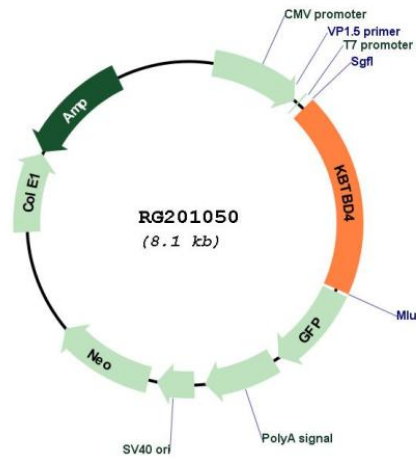
Sgfl-MluI

Cloning Scheme:

Cloning sites used for ORF Shutting:



Plasmid Map:



<b>ACCN:</b>	NM_016506
<b>ORF Size:</b>	1554 bp
<b>OTI Disclaimer:</b>	The molecular sequence of this clone aligns with the gene accession number as a point of reference only. However, individual transcript sequences of the same gene can differ through naturally occurring variations (e.g. polymorphisms), each with its own valid existence. This clone is substantially in agreement with the reference, but a complete review of all prevailing variants is recommended prior to use. <a href="#">More info</a>
<b>OTI Annotation:</b>	This clone was engineered to express the complete ORF with an expression tag. Expression varies depending on the nature of the gene.
<b>Components:</b>	The ORF clone is ion-exchange column purified and shipped in a 2D barcoded Matrix tube containing 10ug of transfection-ready, dried plasmid DNA (reconstitute with 100 ul of water).
<b>Reconstitution Method:</b>	<ol style="list-style-type: none"><li>1. Centrifuge at 5,000xg for 5min.</li><li>2. Carefully open the tube and add 100ul of sterile water to dissolve the DNA.</li><li>3. Close the tube and incubate for 10 minutes at room temperature.</li><li>4. Briefly vortex the tube and then do a quick spin (less than 5000xg) to concentrate the liquid at the bottom.</li><li>5. Store the suspended plasmid at -20°C. The DNA is stable for at least one year from date of shipping when stored at -20°C.</li></ol>
<b>RefSeq:</b>	<a href="#">NM_016506.6</a>
<b>RefSeq Size:</b>	2442 bp
<b>RefSeq ORF:</b>	1557 bp
<b>Locus ID:</b>	55709
<b>UniProt ID:</b>	<a href="#">Q9NVX7</a>
<b>Cytogenetics:</b>	11p11.2