

Product datasheet for **RG201026**

Plasmolipin (PLL) (NM_015993) Human Tagged ORF Clone

Product data:

Product Type: Expression Plasmids
Product Name: Plasmolipin (PLL) (NM_015993) Human Tagged ORF Clone
Tag: TurboGFP
Symbol: Plasmolipin
Synonyms: PMLP; TM4SF11
Mammalian Cell Selection: Neomycin
Vector: pCMV6-AC-GFP (PS100010)
E. coli Selection: Ampicillin (100 ug/mL)
ORF Nucleotide Sequence: >RG201026 representing NM_015993
 Red=Cloning site Blue=ORF Green=Tags(s)

TTTTGTAATACGACTCACTATAGGGCGGCCGGAATTCGTCGACTGGATCCGGTACCGAGGAGATCTGCC
 GCC**CGATCGCC**

ATGGCCGAGTTCCCGTCGAAAGTTAGCACGCGGACCAGCAGTCCTGCGCAGGGCGCCGAAGCCTCGGTGT
 CGGCGCTGCGCCCGACCTGGGCTTCGTGCGCTCCCGCTCGGGGCGCTCATGCTGCTGCAGCTGGTGCT
 GGGGCTGCTGGTGGGCGCTGATTGCGGACACCCCGTACCACCTGTATCCGGCCTATGGCTGGGTGATG
 TTCGTCGCTGTCTTCTCTGGCTGGTGACAATCGTCCTCTCAACCTCTACCTGTTTCAGCTGCACATGA
 AGTTGTACATGGTCCCTGGCCACTGGTGTAAATGATCTTTAACATCAGCGCCACCGTTCTTACATCAC
 CGCCTTACATCGCCTGCTCTGCGGAGTTGACCTGACATCCCTGAGGGGACCCCGCCTTATAACAGCGC
 GCGGCTGCCTCGTTCTTTGCGTGTGGTGGTATGATCGCCTATGGAGTGAGTGCCTTCTTCAGCTACCAGG
 CCTGGCGAGGAGTAGGCAGCAATGCGGCCACCAGTCAGATGGCTGGCGGCTATGCC

ACGCGTACGCGGCCGCTCGAG - GFP Tag - GTTTAA

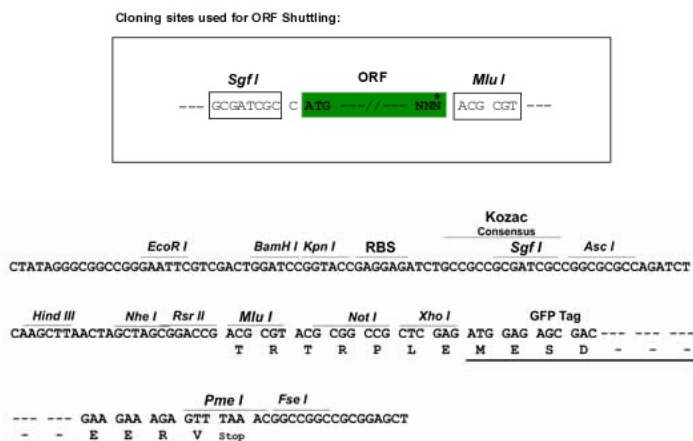
Protein Sequence: >RG201026 representing NM_015993
 Red=Cloning site Green=Tags(s)

MAEFPSKVSTRTSSPAQGAEASVSALRPDLGFVRSRLGALMLLQLVLGLLVWALIADTPYHLYPAYGWVM
 FVAVFLWLVTIVLFLNLYLFLHMKLYMVPWPLVLMIFNISATVLYITAFIACSAAVDLTSLRGRTPYNQR
 AAASFFACLVMIAYGVSFAFFSYQAWRGVGSNAATSQMAGGYA

TRTRPLE - GFP Tag - V

Restriction Sites: SgfI-MluI



Cloning Scheme:


ACCN: NM_015993

ORF Size: 546 bp

OTI Disclaimer: The molecular sequence of this clone aligns with the gene accession number as a point of reference only. However, individual transcript sequences of the same gene can differ through naturally occurring variations (e.g. polymorphisms), each with its own valid existence. This clone is substantially in agreement with the reference, but a complete review of all prevailing variants is recommended prior to use. [More info](#)

OTI Annotation: This clone was engineered to express the complete ORF with an expression tag. Expression varies depending on the nature of the gene.

Components: The ORF clone is ion-exchange column purified and shipped in a 2D barcoded Matrix tube containing 10ug of transfection-ready, dried plasmid DNA (reconstitute with 100 ul of water).

Reconstitution Method:

1. Centrifuge at 5,000xg for 5min.
2. Carefully open the tube and add 100ul of sterile water to dissolve the DNA.
3. Close the tube and incubate for 10 minutes at room temperature.
4. Briefly vortex the tube and then do a quick spin (less than 5000xg) to concentrate the liquid at the bottom.
5. Store the suspended plasmid at -20°C. The DNA is stable for at least one year from date of shipping when stored at -20°C.

RefSeq: [NM_015993.3](#)

RefSeq Size: 1505 bp

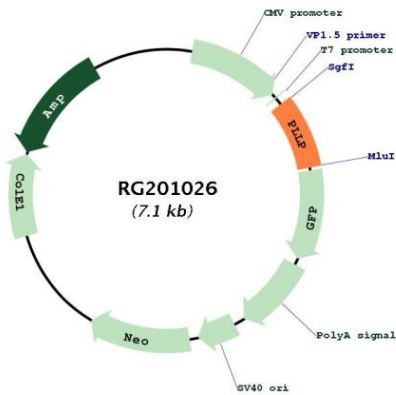
RefSeq ORF: 549 bp

Locus ID: 51090

UniProt ID: [Q9Y342](#)

Cytogenetics:	16q13
Protein Families:	Ion Channels: Other, Transmembrane
Gene Summary:	Appears to be involved in myelination. Could also participate in ion transport events as addition of plasmolipin to lipid bilayers induces the formation of ion channels, which are voltage-dependent and K(+)-selective (By similarity).[UniProtKB/Swiss-Prot Function]

Product images:



Circular map for RG201026