

Product datasheet for **RG201024**

ZNF226 (NM_001032372) Human Tagged ORF Clone

Product data:

Product Type:	Expression Plasmids
Product Name:	ZNF226 (NM_001032372) Human Tagged ORF Clone
Tag:	TurboGFP
Symbol:	ZNF226
Mammalian Cell Selection:	Neomycin
Vector:	pCMV6-AC-GFP (PS100010)
E. coli Selection:	Ampicillin (100 ug/mL)



[View online »](#)

ORF Nucleotide
Sequence:

>RG201024 representing NM_001032372
Red=Cloning site Blue=ORF Green=Tags(s)

TTTTGTAATACGACTCACTATAGGGCGGCCGGGAATTCGTCGACTGGATCCGGTACCGAGGAGATCTGCC
GCC**CGGATCGCC**

ATGAATATGTTCAAGGAAGCAGTGACCTTCAAGGACGTGGCTGTGGCCTTCACGGAGGAGGAATTGGGGC
TGCTGGGCCCTGCCAGAGGAAGCTGTACCGAGATGTGATGGTGGAGAACTTAGGAACCTGCTGTCACT
GGGGCATCCACCTTCAAAACAAGATGTATCACCTATAGAAAGAAATGAGCAGCTTTGGATAATGACGACA
GCAACCCGAAGACAGGGAATTTAGGAGAGAAAAATCAAAGTAAGTTAATTAAGTGTCAAGACAGAGAAT
CAGAAGAAGAGCTTTCTTGTGGCAAATCTGGCAACAAATGCAAAATGACTTAACCGAGTGTCAAGACTC
CATGATCAATAATTCTCAGTGTCAAAACAAGGTGATTTCCCTTACCAGGTAGGGACAGAAGTGTCTATT
CAAATTTCTGAAGATGAGAACTATATAGTAAATAAAGCAGATGGTCCCAATAACTGGGAATCCAGAGT
TTCTATCTTGAGAACCCAGGATTTCTGGAGGAAAACATTCCTGACTGAGTCACAGAGATTGAACAGAGA
TCAGCAAAATTTCCATAAAAAATAAATTATGTCAATGTAAGAAGGGTGTGATCCCATCGGTTGGATTTC
CATCATGATGGTCATAGAGTACACAAAAGTGAAAAATCTTATAGACCCAATGATTATGAAAAAGACAACA
TGAAGATTTTGACATTTGATCACAAATAGCATGATTCACACAGGACAGAAAATCGTACCAGTGTAAATGAGTG
TAAAAACCCCTTCAGTGTCTCTCCAGCTTTGATCTTTCATCAGCAGTTACAATCAGGAGAGAAGTCTCTT
ACATGTGTTGAGCGTGGAAAAGGCTTCTGTTACAGCCAGTTCTTCTGTTTCATCAGAAAAGTACATGTGG
GAGAAAAACTTAAGTGTGATGAGTGTGGTAAGGAATTCAGTCAGGGCGCTCATCTACAGACCCATCAGAA
AGTCCACGTGATAGAGAAACCATACAAATGTAAGCAATGTGGGAAAGGTTTCAGTCGTAGATCAGCACTT
AATGTTCAATGCAAGGTCCACACGGCAGAGAAACCTTATAATTTGAGGAGTGTGGGAGGGCCTTCAGTC
AGGCCCTCATCTTCAGGACCATCAGAGACTCCACACTGGGAGAGAACCCATTCAAATGTGATGCATGTGG
TAAGAGCTTCAGTCGGAATTCACATCTTCAATCCCATCAAAGAGTTCATACAGGAGAGAAAACCATACAAA
TGTGAGGAGTGTGGTAAGGGCTTCATTTGTAGCTCAAATCTTTACATTCATCAGAGAGTCCACACAGGAG
AAAAACCTATAAATGTGAGGAATGTGGTAAAGGCTTTAGTCGGCCTTCAAGTCTTCAGGCCATCAGGG
AGTTCACACTGGAGAGAAGTACATATGTACTGTATGTGGGAAAGGCTTTACTCTGAGTTCAAATCTT
CAAGCCCATCAGAGAGTCCACACTGGAGAGAAGCCATACAAATGCAATGAGTGTGGGAGAGCTTCAGGA
GGAATTCATTATCAAGTTCATCTAGTGGTCCACACAGGAGAGAAAACCTATAAATGTGAGATATGTGG
GAAGGGCTTCAGTCAAAGTTCGATCTTCAAATCCATCAGAAGGCCACAGTATAGAGAAACCTTTAAG
TGTGAGGAGTGTGGCAGGGTTTCAATCAGAGCTCACGACTTCAGATTCACCAGCTGATCCATACGGGTG
AGAAACCATACAAATGTGAAGAGTGTGGCAAGGATTTAGTCGTAGAGCAGATCTTAAAAATTCAGTGTAG
GATCCACACAGGAGAGAAACCATATAATTGTGAGGAGTGTGGGAAAGGCTTCAGGCAGGCCCTCAAATCTT
TTGGCCCATCAGAGAGTCCACAGTGGAGAAAAACCATCAAATGTGAAGAATGTGGGAGAGTTCGGTTC
GGAGTGCACATCTTCAAGCCATCAAAAAGTCCCACTGGAGATAAGCCATACAAATGTGATGAGTGTGG
GAAGGGCTTCAAGTGGAGCTTGAACCTTGACATGCATCAGAGGGTGCACACAGGAGAAAAACCATATAAA
TGTGGGGAGTGTGGTAAGTACTTCAGTCAGGCCCAAGTCTTCAACTTCATCAGAGTGTCCACACAGGAG
AGAAACCATACAAATGTGATGTGTGTGGTAAAGTCTTTCAGTCGGTCTTCACAACTACAGTCTCATCAGCC
AGTTCACACTGGGAGAAAACCTTATAAATGTGAGATATGTGGTAAGAGCTTCAGTTGGCGATCAAATCTT
ACAGTTCATCACAGAATCCATGTTGGTGATAAATCCTATAAAAAGTAATAGGGGTGTAAGAACATCAGAG
AATCCACACAGGAAAAAATCTATAAAA

ACGCGTACGCGGCCGCTCGAG – GFP Tag – GTTTAA

Protein Sequence: >RG201024 representing NM_001032372
 Red=Cloning site Green=Tags(s)

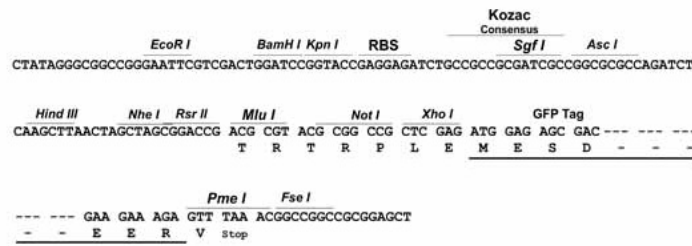
MNMFKEAVTFKDVAVAFTEEELGLLGPAQRKLYRDMVENFRNLLSVGHPPFKQDVSPIERNEQLWIMTT
 ATRRQGNLGEKNQSKLITVQDRESEEELSCWQIWQIANDLTRCQDSMINNSQCHKQGDFFPYQVGTLSI
 QISEDENYIVNKADGPNNTGNPEFPILRTQDSWRKTFLETSQRLNRDQQISIKNKLQCKKGVDPIGWIS
 HHDGHRVHKSEKSYRPNDEKDNMKILTFDHNSMIHTGQKSYQCNECKKPFSDLSSFDLHQQLQSSEKSL
 TCVERGKGCYSPVLPVHQKVHVGEKLCDECGKEFSQGAHLQTHQKVHVIEKPYKCKQCGKGFSSRSAL
 NVHCKVHTAEKPYNCEECGRAFSQASHLQDHLHTGEKPFKCDACGKFSRNSHLQSHQRVHTGEKPYK
 CEECGKGFICSSNLYIHQRVHTGEKPYKCEECGKGFSRPSSLQAHQGVHTGEKSYICTVCGKGFTLSSNL
 QAHQRVHTGEKPYKCEECGKFSRRNSHYQVHLVVHTGEKPYKCEICGKGFSSSYLQIHQKAHSIEKPFK
 CEECGQGNQSSRLQIHQLIHTGEKPYKCEECGKFSRRADLKIHCRIHTGEKPYNCEECGVFRQASNL
 LAHQRVHSGEKPFKCEECGKFSGRSAHLQAHQKVHTGDKPYKCEECGKFKWSLNLDMHQRVHTGEKPYK
 CGECGYFSQASSLQLHQSIVHTGEKPYKCDVCGKVFSSSQLQSHQRVHTGEKPYKCEICGKFSWRSNL
 TVHHRIVGDKSYKSNRGGKNIRESTQEKKSIK

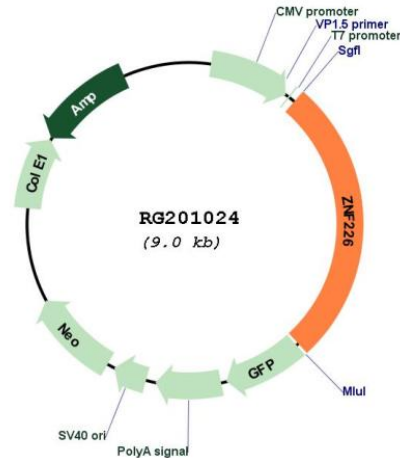
TRTRPLE - GFP Tag - V

Restriction Sites: SgfI-MluI

Cloning Scheme:

Cloning sites used for ORF Shuttling:



Plasmid Map:


ACCN: NM_001032372

ORF Size: 2409 bp

OTI Disclaimer: The molecular sequence of this clone aligns with the gene accession number as a point of reference only. However, individual transcript sequences of the same gene can differ through naturally occurring variations (e.g. polymorphisms), each with its own valid existence. This clone is substantially in agreement with the reference, but a complete review of all prevailing variants is recommended prior to use. [More info](#)

OTI Annotation: This clone was engineered to express the complete ORF with an expression tag. Expression varies depending on the nature of the gene.

Components: The ORF clone is ion-exchange column purified and shipped in a 2D barcoded Matrix tube containing 10ug of transfection-ready, dried plasmid DNA (reconstitute with 100 ul of water).

Reconstitution Method:

1. Centrifuge at 5,000xg for 5min.
2. Carefully open the tube and add 100ul of sterile water to dissolve the DNA.
3. Close the tube and incubate for 10 minutes at room temperature.
4. Briefly vortex the tube and then do a quick spin (less than 5000xg) to concentrate the liquid at the bottom.
5. Store the suspended plasmid at -20°C. The DNA is stable for at least one year from date of shipping when stored at -20°C.

RefSeq: [NM_001032372.1](#), [NP_001027544.1](#)

RefSeq Size: 2623 bp

RefSeq ORF: 2412 bp

Locus ID: 7769

UniProt ID: [Q9NYT6](#)

Cytogenetics: 19q13.31
Protein Families: Transcription Factors
Gene Summary: May be involved in transcriptional regulation.[UniProtKB/Swiss-Prot Function]