

Product datasheet for **RG201021**

Suppressor of Fused (SUFU) (NM_016169) Human Tagged ORF Clone

Product data:

Product Type:	Expression Plasmids
Product Name:	Suppressor of Fused (SUFU) (NM_016169) Human Tagged ORF Clone
Tag:	TurboGFP
Symbol:	Suppressor of Fused
Synonyms:	JBTS32; PRO1280; SUFUH; SUFUXL
Mammalian Cell Selection:	Neomycin
Vector:	pCMV6-AC-GFP (PS100010)
E. coli Selection:	Ampicillin (100 ug/mL)



[View online »](#)

ORF Nucleotide Sequence:

>RG201021 representing NM_016169
 Red=Cloning site Blue=ORF Green=Tags(s)

TTTTGTAATACGACTCACTATAGGGCGGCCGGGAATTCGTCGACTGGATCCGGTACCGAGGAGATCTGCC
 GCC**CGCATCGCC**

ATGGCGGAGCTGCGGCCCTAGCGGCGCCCCGGCCCCACCGCGCCCCGGCCCCTGGCCCCGACTGCCCCCC
 CGGCCTTCGCTTCGCTCTTTCCCCGGGACTGCACGCCATCTACGGAGAGTGCCGCCCTTTACCTGA
 CCAGCCGAACCCGCTCCAGGTTACCGCTATCGTCAAGTACTGGTTGGGTGGCCAGACCCCTTGGACTAT
 GTTAGCATGTACAGGAATGTGGGAGGCCCTTCTGCTAACATCCCCGAGCACTGGCACTACATCAGCTTCG
 GCCTGAGTGATCTCTATGGTGACAACAGAGTCCATGAGTTACAGGAACAGATGGACCTAGTGGTTTTGG
 CTTTGAGTTGACCTTTCTGCTGAAGAGAGAAAATGGGGAGTCTGCCCCACCAACATGGCCCGCAGAGTTA
 ATGCAGGGCTTGGCAGATACGTGTTCCAGTCAGAGAACACCTTCTGCAGTGGGGACCATGTGCTCTGGC
 ACAGCCCTTTGGATAACAGTGAGTCAAGAATTCAGCACATGCTGCTGACAGAGGACCCACAGATGCAGCC
 CGTGCAGACACCCCTTTGGGTAGTTACCTTCTCCAGATCGTTGGTGTCTGCACTGAAGAGCTACTACTCA
 GCCCAGCAGTGGAACGGGCAGGGCATCCTGGAGCTGCTGCGGACAGTGCCTATTGCTGGCGGCCCTGGC
 TGATAACTGCATGCGGAGGGGAGAGACCATATTTGAGATCGATCCACACCTGCAAGAGAGAGTTGACAA
 AGGCATCGAGACAGATGGCTCCAACCTGAGTGGTGTGAGTCCAAAGTGTGCTTGGGATGACCTGAGCCGG
 CCCCCGAGGATGACGAGGACAGCCGGAGCATCTGCATCGGCACACAGCCCCGGCGACTCTCTGGCAAAG
 ACACAGAGCAGATCCGGGAGACCCTGAGGAGAGGACTCGAGATCAACAGCAAACCTGTCTTCCACCAAT
 CAACCTCAGCGGCAGAAATGGCCTCGCCACGACCGGGCCCCGAGCCGCAAAGACAGCCTGGAAAGTGAC
 AGCTCCACGGCCATCATTCCCCATGAGCTGATTCGCACGCGGCAGCTTGAGAGCGTACATCTGAAATTCA
 ACCAGGAGTCCGGAGCCCTCATTCTCTGCTGCCTAAGGGGCAGGCTCCTGCATGGACGGCCTTTACATA
 TAAAAGTATCACAGGTGACATGGCCATCACGTTTGTCTCCACGGGAGTGAAGGCCCTTTGCCACTGAG
 GAGCATCCTTACGCGGCTCATGGACCCTGGTTACAAATTCTGTTGACCGAAGAGTTTGTAGAGAAAATGT
 TGGAGGATTTAGAAGATTTGACTTCTCCAGAGGAATCAAACCTCCCAAAGAGTACAGCTGGCCTGAAAA
 GAAGCTGAAGGTCTCCATCCTGCCTGACGTGGTGTTCGACAGTCCGCTACAC

ACGCGTACGCGGCCGCTCGAG - GFP Tag - GTTTAA

Protein Sequence:

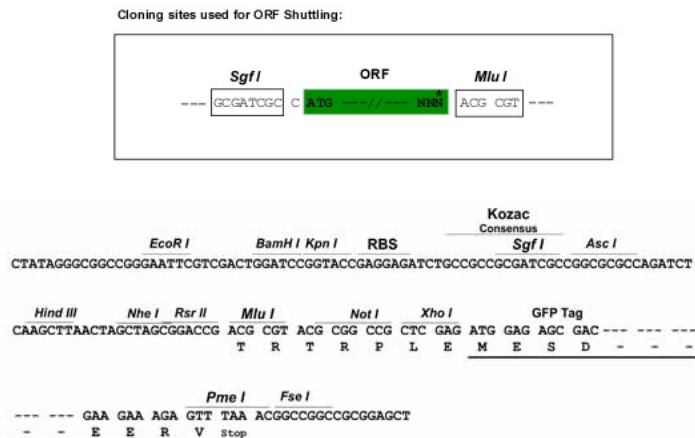
>RG201021 representing NM_016169
 Red=Cloning site Green=Tags(s)

MAELRPSGAPGPTAPPAPGPTAPPAFASLFPPGLHAIYGECRRLYPDQPNPLQVTAIVKYWLGPDPLDY
 VSMYRNVGSPSANIPEHWHYISFGLSDLYDNRVHEFTGTDGSPSGFELTFRLKRETGESAPPTWPAEL
 MQGLARYVVFQSENTFCSGDHVSWHSPLDNSESRIQHMLLTEDPQMOPVQTPFGVVTFLLQIVGVCTEELHS
 AQQWNGQGILELLRTVPIAGGPWLITDMRRGETIFEIDPHLQERVDKGIETDGSNL SGVSAKCAWDDL SR
 PPEDEDSRSICIGTQPRRLSGKDEQIRETLRRGLEINSKPVLPPINPQRQNGLAHDRAPSRKDSLES
 SSTAIIIPHELIRTRQLESVHLKFNQESGALIPLCLRGRLLHGRHFTYKSIITGDMAITFVSTGVEGAFATE
 EHPYAAHGPWLQILLTEEFVEKMLEDLTSPEEFKLPKEYSWPEKCLKVSIPLDVPVDFSLH

TRTRPLE - GFP Tag - V

Restriction Sites:

Sgfl-MluI

Cloning Scheme:


ACCN: NM_016169

ORF Size: 1452 bp

OTI Disclaimer: The molecular sequence of this clone aligns with the gene accession number as a point of reference only. However, individual transcript sequences of the same gene can differ through naturally occurring variations (e.g. polymorphisms), each with its own valid existence. This clone is substantially in agreement with the reference, but a complete review of all prevailing variants is recommended prior to use. [More info](#)

OTI Annotation: This clone was engineered to express the complete ORF with an expression tag. Expression varies depending on the nature of the gene.

Components: The ORF clone is ion-exchange column purified and shipped in a 2D barcoded Matrix tube containing 10ug of transfection-ready, dried plasmid DNA (reconstitute with 100 ul of water).

Reconstitution Method:

1. Centrifuge at 5,000xg for 5min.
2. Carefully open the tube and add 100ul of sterile water to dissolve the DNA.
3. Close the tube and incubate for 10 minutes at room temperature.
4. Briefly vortex the tube and then do a quick spin (less than 5000xg) to concentrate the liquid at the bottom.
5. Store the suspended plasmid at -20°C. The DNA is stable for at least one year from date of shipping when stored at -20°C.

RefSeq: [NM_016169.4](#)

RefSeq Size: 4898 bp

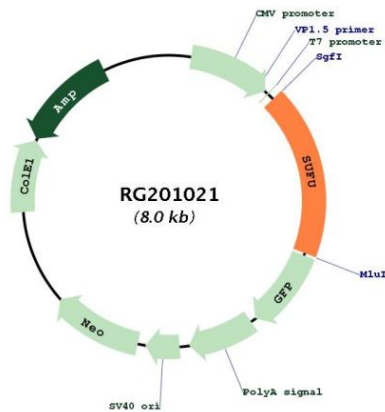
RefSeq ORF: 1455 bp

Locus ID: 51684

UniProt ID: [Q9UMX1](#)

Cytogenetics: 10q24.32
Domains: SUFU
Protein Families: Druggable Genome, Transcription Factors
Protein Pathways: Basal cell carcinoma, Hedgehog signaling pathway, Pathways in cancer
Gene Summary: The Hedgehog signaling pathway plays an important role in early human development. The pathway is a signaling cascade that plays a role in pattern formation and cellular proliferation during development. This gene encodes a negative regulator of the hedgehog signaling pathway. Defects in this gene are a cause of medulloblastoma. Alternative splicing results in multiple transcript variants.[provided by RefSeq, May 2010]

Product images:



Circular map for RG201021