

Product datasheet for **RG201017**

GTL3 (CFAP20) (NM_013242) Human Tagged ORF Clone

Product data:

Product Type: Expression Plasmids
Product Name: GTL3 (CFAP20) (NM_013242) Human Tagged ORF Clone
Tag: TurboGFP
Symbol: CFAP20
Synonyms: BUG22; C16orf80; EVORF; fSAP23; GTL3
Mammalian Cell Selection: Neomycin
Vector: pCMV6-AC-GFP (PS100010)
E. coli Selection: Ampicillin (100 ug/mL)
ORF Nucleotide Sequence: >RG201017 representing NM_013242
 Red=Cloning site Blue=ORF Green=Tags(s)

TTTTGTAATACGACTCACTATAGGGCGGCCGGAATTCGTCGACTGGATCCGGTACCGAGGAGATCTGCC
 GCC**CGATCGCC**

ATGTTCAAAAACAGTTCAGAGCGGCTTCTCTCCATCCTCTACAGCATCGGCAGCAAGCCTCTGCAA
 TCTGGGACAAAAGGTACGGAATGGCCACATCAAAGAATCACTGATAATGACATCCAGTCCCTGGTGCT
 AGAGATTGAAGGGACAAATGTAAGCACCACATATACACATGCCCTGCAGACCCCAAGAAGACGCTGGGA
 ATTAAACTTCTTCTTGTGTCATGATTATCAAAAACCTGAAGAAGATTTTACCTTGAAGTGCAGGTAC
 TAGATGACAAGAATGTGCGTCGTCGCTTTCGGGCAAGTAACTACCAGAGCACCACCGGGTCAAACCTT
 CATCTGCACCATGCCCATGCGGCTGGATGACGGCTGGAACAGATTCAGTTCAACTTGCTAGACTTCACA
 CGGCGAGCATACGGCACCAATTACATCGAGACCCTCAGAGTGCAGATCCATGCAAATTGTGCGATCCGAC
 GGGTTTACTTCTCAGACAGACTCTACTCAGAAGATGAGCTGCCGGCAGAGTTCAAAGTGTATCTCCAGT
 TCAGAACAAGGCAAAGCAA

ACGCGTACGCGGCCGCTCGAG - GFP Tag - GTTTAA

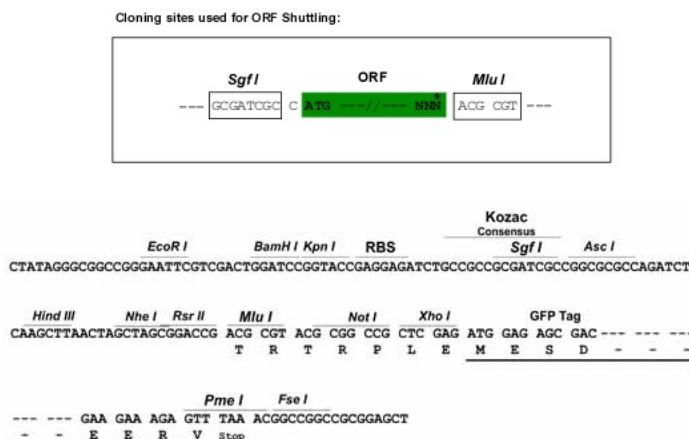
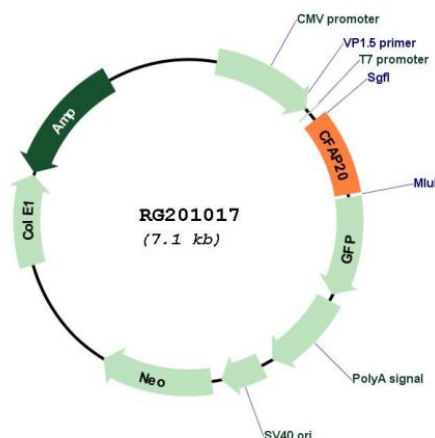
Protein Sequence: >RG201017 representing NM_013242
 Red=Cloning site Green=Tags(s)

MFKNTFQSGFLSILYSIGSKPLQIWDKKVRNGHIKRITDNDIQSLVLEIEGTVNVTYITCPADPKKTLG
 IKLPFLVMIKLNKKYFTFEVQVLDKKNVRRFRASNYQSTTRVKPFICTMPMLRDDGWNQIQFNLLDFT
 RRAYGTNYIETLRVQIHANCRIIRRVYFSDRLYSEDELPAEFKLYLPVQNKAKQ

TRTRPLE - GFP Tag - V

Restriction Sites: SgfI-MluI



Cloning Scheme:

Plasmid Map:


ACCN: NM_013242

ORF Size: 579 bp

OTI Disclaimer: The molecular sequence of this clone aligns with the gene accession number as a point of reference only. However, individual transcript sequences of the same gene can differ through naturally occurring variations (e.g. polymorphisms), each with its own valid existence. This clone is substantially in agreement with the reference, but a complete review of all prevailing variants is recommended prior to use. [More info](#)

OTI Annotation: This clone was engineered to express the complete ORF with an expression tag. Expression varies depending on the nature of the gene.

Components: The ORF clone is ion-exchange column purified and shipped in a 2D barcoded Matrix tube containing 10ug of transfection-ready, dried plasmid DNA (reconstitute with 100 ul of water).

Reconstitution Method:

1. Centrifuge at 5,000xg for 5min.
2. Carefully open the tube and add 100ul of sterile water to dissolve the DNA.
3. Close the tube and incubate for 10 minutes at room temperature.
4. Briefly vortex the tube and then do a quick spin (less than 5000xg) to concentrate the liquid at the bottom.
5. Store the suspended plasmid at -20°C. The DNA is stable for at least one year from date of shipping when stored at -20°C.

RefSeq: [NM_013242.3](#)

RefSeq Size: 1308 bp

RefSeq ORF: 582 bp

Locus ID: 29105

UniProt ID: [Q9Y6A4](#)

Cytogenetics: 16q21

Domains: DUF667

Protein Families: Transcription Factors

Gene Summary: Cilium- and flagellum-specific protein that plays a role in axonemal structure organization and motility. Involved in the regulation of the size and morphology of cilia (PubMed:24414207). Required for axonemal microtubules polyglutamylation (PubMed:24414207).[UniProtKB/Swiss-Prot Function]