

Product datasheet for **RG201003**

MSI2 (NM_138962) Human Tagged ORF Clone

Product data:

Product Type: Expression Plasmids
Product Name: MSI2 (NM_138962) Human Tagged ORF Clone
Tag: TurboGFP
Symbol: MSI2
Synonyms: MSI2H
Mammalian Cell Selection: Neomycin
Vector: pCMV6-AC-GFP (PS100010)
E. coli Selection: Ampicillin (100 ug/mL)
ORF Nucleotide Sequence: >RG201003 representing NM_138962
Red=Cloning site Blue=ORF Green=Tags(s)

TTTTGTAATACGACTCACTATAGGGCGGCCGGAATTCGTCGACTGGATCCGGTACCGAGGAGATCTGCC
GCC**CGATCGCC**

ATGGAGGCCAAATGGGAGCCAAGGCACCTCGGGCAGCGCCAACGACTCCCAGCAGCACCCCGGTAAAATGT
TTATCGGTGGACTGAGCTGGCAGACCTCACCAGATAGCCTTAGAGACTATTTAGCAAATTTGGAGAAAT
TAGAGAATGTATGGTCATGAGAGATCCCACTACGAAACGCTCCAGAGGCTTCGGTTTCGTCACGTTTCGCA
GACCCAGCAAGTGTAGATAAAGTATTAGGTCAGCCCCACCATGAGTTAGATTCCAAGACGATTGACCCCA
AAGTTGCATTTCTCGTCGAGCGCAACCCAAGATGGTCACGAGAACAAGAAAATATTTGTAGGCGGGTT
ATCTGCGAACACAGTAGTGAAGATGTAAGCAATATTTGAGCAGTTTGGCAAGGTGGAAGATGCAATG
CTGATGTTTGATAAACTACCAACAGGCACAGAGGGTTTGGCTTTGTCACTTTTGAGAATGAAGATGTTG
TGGAGAAAGTCTGTGAGATTCAATTTCCATGAAATCAATAATAAAATGGTGAATGTAAGAAAGCTCAGCC
GAAAGAAGTCAATGTTCCACCTGGGACAAGAGGCCGGGCCGGGGACTGCCTTACACCATGGACGCGTTC
ATGCTTGGCATGGGGATGCTGGGATATCCCAACTTCGTGGCGACCTATGGCCGTGGCTACCCCGATTTC
CTCAAGCTATGGCTATCAGTTCACAGGCTTCCAGCAGCGGCTTATGGACCAGTGGCAGCAGCGGGGT
GGCGGCAGCAAGAGGATCAGGCTCCAACCCGGCGCGCCCGGAGGCTTCCCGGGGCCAACAGCCAGGA
CCTGTCCCGATCTCTACGGCCCTGCCAGCCAGGACTCCGGAGTGGGGAATTACATAAGTCCGGCCAGCC
CACAGCCGGGCTCGGGCTTCGGCCACGGCATAGCTGGACCTTTGATTGCAACGGCCTTTACAATGGATA
CCAT

AG**CGGACCG**ACGCGTACGCGGCCGCTCGAG - GFP Tag - GTTTAA



[View online »](#)

Protein Sequence: >RG201003 representing NM_138962
Red=Cloning site Green=Tags(s)

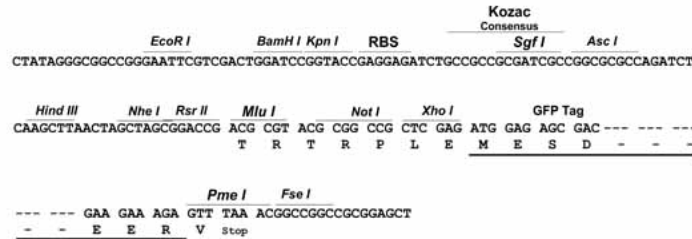
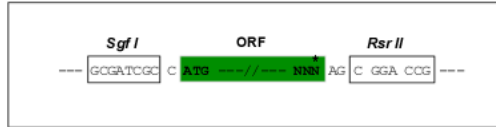
```
MEANGSQGTSGSANDSQHDPGKMF IGGLSWQTPDSL RDYFSKFGEI RECMVMRDPTTKRSRGFGFVTF A
DPASVDKVLGQPHHELD SKTIDPKVAFPRRAQPKM VTRTKKIFVGGLSANTVVEDVKQYFEQFGKVEDAM
LMFDKTTNRHRGFGFVTFENEDVVEKVC EIHFEINNKMVECKKAQPK EVMFPPGTRGRARGLPYTMDAF
MLGMGMLGYPNFVATYGRGYPGFAPS YGYQFPGFPAAAYGPVAAA AAAAAARGSGSNPARPGGFPGANSPG
PVADLYGPASQDSGVGN YISAASPQPGSGFGHGIAGPLIATAFTNGYH
```

SGPTRRRLE - GFP Tag - V

Restriction Sites: SgfI-RsrII

Cloning Scheme:

Cloning sites used for ORF Shuttling:



ACCN: NM_138962

ORF Size: 984 bp

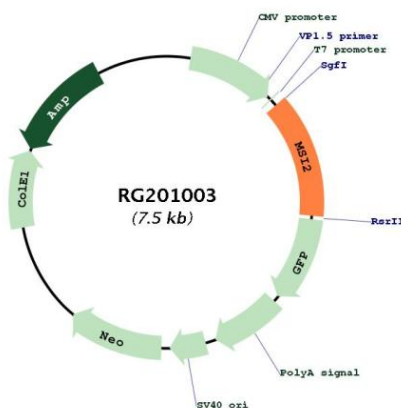
OTI Disclaimer: Due to the inherent nature of this plasmid, standard methods to replicate additional amounts of DNA in E. coli are highly likely to result in mutations and/or rearrangements. Therefore, OriGene does not guarantee the capability to replicate this plasmid DNA. Additional amounts of DNA can be purchased from OriGene with batch-specific, full-sequence verification at a reduced cost. Please contact our customer care team at custsupport@origene.com or by calling 301.340.3188 option 3 for pricing and delivery.

The molecular sequence of this clone aligns with the gene accession number as a point of reference only. However, individual transcript sequences of the same gene can differ through naturally occurring variations (e.g. polymorphisms), each with its own valid existence. This clone is substantially in agreement with the reference, but a complete review of all prevailing variants is recommended prior to use. [More info](#)

OTI Annotation: This clone was engineered to express the complete ORF with an expression tag. Expression varies depending on the nature of the gene.

Components:	The ORF clone is ion-exchange column purified and shipped in a 2D barcoded Matrix tube containing 10ug of transfection-ready, dried plasmid DNA (reconstitute with 100 ul of water).
Reconstitution Method:	<ol style="list-style-type: none">1. Centrifuge at 5,000xg for 5min.2. Carefully open the tube and add 100ul of sterile water to dissolve the DNA.3. Close the tube and incubate for 10 minutes at room temperature.4. Briefly vortex the tube and then do a quick spin (less than 5000xg) to concentrate the liquid at the bottom.5. Store the suspended plasmid at -20°C. The DNA is stable for at least one year from date of shipping when stored at -20°C.
RefSeq:	<u>NM_138962.1</u>
RefSeq Size:	1581 bp
RefSeq ORF:	987 bp
Locus ID:	124540
UniProt ID:	<u>Q96DH6</u>
Cytogenetics:	17q22
Gene Summary:	This gene encodes an RNA-binding protein that is a member of the Musashi protein family. The encoded protein is transcriptional regulator that targets genes involved in development and cell cycle regulation. Mutations in this gene are associated with poor prognosis in certain types of cancers. This gene has also been shown to be rearranged in certain cancer cells. [provided by RefSeq, Apr 2016]

Product images:



Circular map for RG201003