

Product datasheet for **RG200997**

MCHR (MCHR1) (NM_005297) Human Tagged ORF Clone

Product data:

Product Type:	Expression Plasmids
Product Name:	MCHR (MCHR1) (NM_005297) Human Tagged ORF Clone
Tag:	TurboGFP
Symbol:	MCHR
Synonyms:	GPR24; MCH-1R; MCH1R; SLC-1; SLC1
Mammalian Cell Selection:	Neomycin
Vector:	pCMV6-AC-GFP (PS100010)
E. coli Selection:	Ampicillin (100 ug/mL)
ORF Nucleotide Sequence:	>RG200997 representing NM_005297 Red=Cloning site Blue=ORF Green=Tags(s)

TTTTGTAATACGACTCACTATAGGGCGGCCGGAATTCGTCGACTGGATCCGGTACCGAGGAGATCTGCC
GCC**CGATCGCC**

ATGTCAGTGGGAGCCATGAAGAAGGGAGTGGGGAGGGCAGTTGGGCTTGGAGGGCAGCGGCTGCCAGG
CTACGGAGGAAGACCCCTTCCCGACTGCGGGCTTGCCTCCGGGACAAGGTGGCAGGCGCTGGAGGCT
GCCGCAGCCTGCGTGGTGGAGGGGAGCTCAGCTCGTGTGGGAGCAGGCGACCGGCACTGGCTGGATG
GACCTGGAAGCCTCGCTGCTGCCACTGGTCCCAATGCCAGCAACACCTCTGATGGCCCCGATAACCTCA
CTTCGGCAGGATCACCTCCTCGCAGGGGAGCATCTCCTACATCAACATCATCATGCCTTCGGTGTTCGG
CACCATCTGCCTCCTGGGCATCATCGGGAACCTCCACGGTCACTTCGCGGTGCTGAAGAAGTCCAAGCTG
CACTGGTGAACAACGTCCCCGACATCTTCATCATCAACCTCTCGGTAGTAGATCTCCTCTTTCTCCTGG
GCATGCCCTTCATGATCCACCAGCTCATGGGCAATGGGGTGTGGCACTTTGGGGAGACCATGTGCACCCCT
CATCACGGCCATGGATGCCAATAGTCAGTTCACCAGCACCTACATCCTGACCGCCATGGCCATTGACCGC
TACCTGGCCACTGTCCACCCCATCTCTCCACGAAGTTCGGGAAGCCCTCTGTGGCCACCCTGGTGTATCT
GCCTCCTGTGGGCCCTCTCCTTCATCAGCATCACCCCTGTGTGGTGTATGCCAGACTCATCCCCTTCCC
AGGAGGTGCAGTGGGCTGCGGCATACGCTGCCAACCAGACTGACCTCTACTGGTTACCCCTGTAC
CAGTTTTCTGGCCTTTGCCCTGCCTTTGTGGTTCATCACAGCCGCATACGTGAGGATCCTGCAGCGCA
TGACGTCTCAGTGGCCCCGCTCCAGCGCAGCATCCGGCTGCGGACAAGAGGGTGACCCGCACAGC
CATCGCCATCTGTCTGGTCTTCTTTGTGTGCTGGGCACCTACTATGTGCTACAGCTGACCCAGTTGTCC
ATCAGCCGCCGACCCTCACCTTTGTCTACTTATAACAATGCGGCCATCAGCTTGGGCTATGCCAACAGCT
GCCTCAACCCCTTTGTGTACATCGTGTCTGTGAGACGTTCCGAAACGCTTGGTCTGTGCGGTGAAGCC
TGCAGCCAGGGGAGCTTCGCGCTGTGAGCAACGCTCAGACGGCTGACGAGGAGAGGACAGAAAGCAA
GGCACC

ACGCGTACGCGGCCGCTCGAG - GFP Tag - GTTTAA



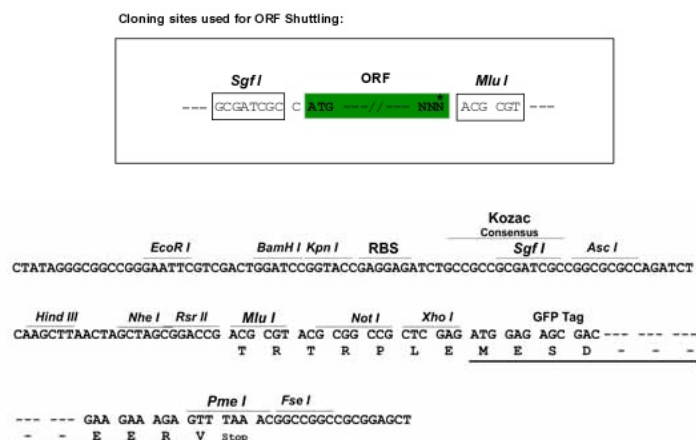
[View online »](#)

Protein Sequence: >RG200997 representing NM_005297
 Red=Cloning site Green=Tags(s)
 MSVGAMKKGVGRAVGLGGGSGCQATEEDPLDCGACAPGGGRRWRLPQPAWVEGSSARLWEQATGTGWM
 DLEASLLPTGPNASNTSDGPDNLTSAAGSPRTGSIYINIIMPSVFGTICLLGIIGNSTVIFAVVKKSKL
 HWCNNVPDIFIINLSVDLFLLLGMPFMIHQLMGNGVWHFGETMCTLITAMDANSQFTSTYILTAMADR
 YLATVHPISSTKFRKPSVATLVICLLWALSFISITPVWLYARLIPFPGGAVGCGIRLPNPDLDLYWFTLY
 QFFLAFALPFVIVITAAAYVRILQRMTSSVAPASQRSIRLRTRKRVTRTAIAICLVFFVCWAPYYVLQTLQSL
 ISRPTLTFVYLYNAAISLGYANCLNPFVYIVLCETFRKRLVLSVKPAAQGQLRAVSNQAQTAEERTESK
 GT

TRTRPLE - GFP Tag - V

Restriction Sites: SgfI-MluI

Cloning Scheme:



ACCN: NM_005297

ORF Size: 1266 bp

OTI Disclaimer: The molecular sequence of this clone aligns with the gene accession number as a point of reference only. However, individual transcript sequences of the same gene can differ through naturally occurring variations (e.g. polymorphisms), each with its own valid existence. This clone is substantially in agreement with the reference, but a complete review of all prevailing variants is recommended prior to use. [More info](#)

OTI Annotation: This clone was engineered to express the complete ORF with an expression tag. Expression varies depending on the nature of the gene.

Components: The ORF clone is ion-exchange column purified and shipped in a 2D barcoded Matrix tube containing 10ug of transfection-ready, dried plasmid DNA (reconstitute with 100 ul of water).

Reconstitution Method:

1. Centrifuge at 5,000xg for 5min.
2. Carefully open the tube and add 100ul of sterile water to dissolve the DNA.
3. Close the tube and incubate for 10 minutes at room temperature.
4. Briefly vortex the tube and then do a quick spin (less than 5000xg) to concentrate the liquid at the bottom.
5. Store the suspended plasmid at -20°C. The DNA is stable for at least one year from date of shipping when stored at -20°C.

RefSeq: [NM_005297.2](#), [NP_005288.2](#)

RefSeq Size: 2423 bp

RefSeq ORF: 1062 bp

Locus ID: 2847

UniProt ID: [Q99705](#)

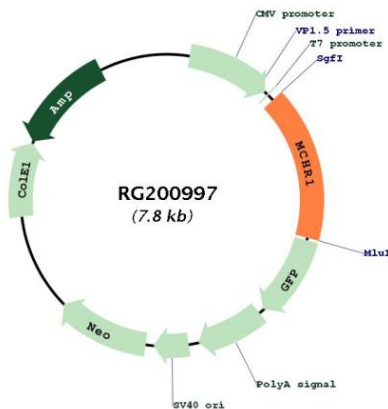
Cytogenetics: 22q13.2

Protein Families: Druggable Genome, GPCR, Transmembrane

Protein Pathways: Neuroactive ligand-receptor interaction

Gene Summary: The protein encoded by this gene, a member of the G protein-coupled receptor family 1, is an integral plasma membrane protein which binds melanin-concentrating hormone. The encoded protein can inhibit cAMP accumulation and stimulate intracellular calcium flux, and is probably involved in the neuronal regulation of food consumption. Although structurally similar to somatostatin receptors, this protein does not seem to bind somatostatin. [provided by RefSeq, Jul 2008]

Product images:



Circular map for RG200997