

Product datasheet for **RG200982**

OTP (NM_032109) Human Tagged ORF Clone

Product data:

Product Type:	Expression Plasmids
Product Name:	OTP (NM_032109) Human Tagged ORF Clone
Tag:	TurboGFP
Symbol:	OTP
Mammalian Cell Selection:	Neomycin
Vector:	pCMV6-AC-GFP (PS100010)
E. coli Selection:	Ampicillin (100 ug/mL)
ORF Nucleotide Sequence:	>RG200982 representing NM_032109 Red=Cloning site Blue=ORF Green=Tags(s)

TTTTGTAATACGACTCACTATAGGGCGGCCGGGAATTCGTCGACTGGATCCGGTACCGAGGAGATCTGCC
GCC**CGATCGCC**

ATGCTGTCTCATGCCGACCTCCTGGACGCCAGGCTAGGTATGAAAGATGCCGCCGAGCTTCTGGGCCACC
GGGAGGCGGTGAAGTGTAGGCTGGGCGTGGGGGCTCCGACCCCGGGGGCCATCCGGGGACCTGGCGCC
CAACTCTGACCCAGTGGAGGGAGCCACTCTGCTGCCCGGGGAGGACATCACCACAGTGGGCTCTACTCCG
GCCTCGCTGGCGGTGAGCGCCAAAGACCCGGACAAGCAGCCCGGGCCCAAGGGCGGCCCGAACCCAGCC
AAGCCCGCCAGCAGCAGGGCCAACAGAAGCAGAAGCGCCACCGGACGCGCTTACCCCGCAGACTCAA
CGAGTTGGAGAGGAGCTTCGCCAAGACTCACTACCCCGACATCTTTATGGGTGAGGAGCTGGCACTGCGT
ATCGGGCTGACCGAGTCCCGAGTGCAGGTCTGGTTCCAGAACCGACGCGCCAAGTGAAGAAGCGCAAGA
AGACGACCAACGTGTTCCGTGCGCCCGGCACACTGCTGCCACGCCAGGCCTGCCTCAGTCCCCTCGGC
TGCCGCGCCCGCTGCCGCGCCATGGGCGACAGCCTGTGCTCTTCCACGCCAACGACACCCGCTGGGCG
GCGGCCGCGCATGCCTGGCGTGTACAGCTGCCTCTGCCGCGGCGCTGGCAGGCAGCAGGCCATGGCGC
AGTCGCTGTCCCAGTGCAGCCTGGCGGCCGTCCGCCGCCAACTCCATGGGCTGTCCAACAGCCTGGC
GGGTTCCAACGGCGGGGCTGCAGTCGACCTCTACCAGCCCGCTTCCCGGCATGGTCCCGCCTCC
CTCCCCGCCCCAGCAACGTCTCCGGTTCGCCAGCTCTGCAGCTCCCGGACAGCAGCAGTGTGGC
GGGACACCAGCATCGCCTCCCTCCGCCGAAGGCCTAGAGCACACAGTCTCTATGAGCTCACT

ACGCGTACGCGGCCGCTCGAG - GFP Tag - GTTTAA



[View online »](#)

Protein Sequence: >RG200982 representing NM_032109
Red=Cloning site Green=Tags(s)

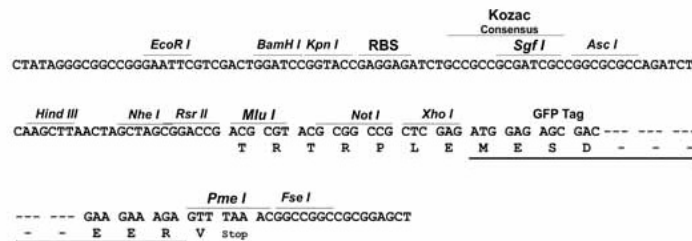
MLSHADLLDARLGMKDAEELGHREAVKCRLLGVGGSDPGGHPGDLAPNSDPVEGATLLPGEDITTVGSTP
 ASLAVSAKDPDKQPGPQGGPNPSQAGQQGQKQKRHRTRFTPAQLNELERSFAKTHYPDIFMREELALR
 IGLTESRVQVWFQNRRAKWKRRKTTNVFRAPGTLLPTPGLPQFPAAAAAAAAAMGDSLCSFHANDTRWA
 AAAMPGVSQLPLPPALGRQQAMAQSLSQCSLAAGPPPNSMGLSNLSLAGSNGAGLQSHLYQPAFPGMVPAS
 LPGPSNVSGSPQLCSSPDSSDVWRGTSIASLRRKALEHTVMSMFT

TRTRPLE - GFP Tag - V

Restriction Sites: SgfI-MluI

Cloning Scheme:

Cloning sites used for ORF Shutting:



ACCN: NM_032109

ORF Size: 975 bp

OTI Disclaimer: Due to the inherent nature of this plasmid, standard methods to replicate additional amounts of DNA in *E. coli* are highly likely to result in mutations and/or rearrangements. Therefore, OriGene does not guarantee the capability to replicate this plasmid DNA. Additional amounts of DNA can be purchased from OriGene with batch-specific, full-sequence verification at a reduced cost. Please contact our customer care team at custsupport@origene.com or by calling 301.340.3188 option 3 for pricing and delivery.

The molecular sequence of this clone aligns with the gene accession number as a point of reference only. However, individual transcript sequences of the same gene can differ through naturally occurring variations (e.g. polymorphisms), each with its own valid existence. This clone is substantially in agreement with the reference, but a complete review of all prevailing variants is recommended prior to use. [More info](#)

OTI Annotation: This clone was engineered to express the complete ORF with an expression tag. Expression varies depending on the nature of the gene.

- Components:** The ORF clone is ion-exchange column purified and shipped in a 2D barcoded Matrix tube containing 10ug of transfection-ready, dried plasmid DNA (reconstitute with 100 ul of water).
- Reconstitution Method:**
1. Centrifuge at 5,000xg for 5min.
 2. Carefully open the tube and add 100ul of sterile water to dissolve the DNA.
 3. Close the tube and incubate for 10 minutes at room temperature.
 4. Briefly vortex the tube and then do a quick spin (less than 5000xg) to concentrate the liquid at the bottom.
 5. Store the suspended plasmid at -20°C. The DNA is stable for at least one year from date of shipping when stored at -20°C.
- RefSeq:** [NM_032109.1](#)
- RefSeq Size:** 2702 bp
- RefSeq ORF:** 978 bp
- Locus ID:** 23440
- UniProt ID:** [Q5XKR4](#)
- Cytogenetics:** 5q14.1
- Protein Families:** Transcription Factors
- Gene Summary:** This gene encodes a member of the homeodomain (HD) family. HD family proteins are helix-turn-helix transcription factors that play key roles in the specification of cell fates. This protein may function during brain development. [provided by RefSeq, Jul 2008]

Product images:



Circular map for RG200982