

Product datasheet for **RG200914**

ALG8 (NM_024079) Human Tagged ORF Clone

Product data:

Product Type:	Expression Plasmids
Product Name:	ALG8 (NM_024079) Human Tagged ORF Clone
Tag:	TurboGFP
Symbol:	ALG8
Synonyms:	CDG1H; PCLD3
Mammalian Cell Selection:	Neomycin
Vector:	pCMV6-AC-GFP (PS100010)
E. coli Selection:	Ampicillin (100 ug/mL)



[View online »](#)

ORF Nucleotide Sequence:

>RG200914 representing NM_024079
 Red=Cloning site Blue=ORF Green=Tags(s)

TTTTGTAATACGACTCACTATAGGGCGGCCGGAATTCGTCGACTGGATCCGGTACCGAGGAGATCTGCC
 GCC**CGCATCGCC**

ATGGCGGCGCTCACAAATGCCACGGGACTGGCAATTGGTTTTCGGCTTTGGCGCTCGGGGTGACTCTTC
 TCAATGCCTTCTCATCCCCACATACCATTCCACAGATTTTGAAGTACACCGAAACTGGCTTGTATCAC
 TCACAGTTTGCCAAATACACAGTGGTATTATGAGGCAACTTCAGAGTGGACGTTGGATTACCCCCCTTTC
 TTTGCATGGTTTGAGTATACCTGTCACATGTTGCCAAATATTTTATGCAAGAAATGCTGAATGTCCATA
 ATTTGAATTACTCCAGCTCAAGGACCTTACTTTCCAGAGATTTCCGTCATCTTTATGGATGACTCTT
 TGTGTATGCTGTCGTGAGTGTGTAATGCATTGATGGAAAAAAGTGGGTAAGAAGTACAGAAAAAG
 CCAAAATTTATTCTGTCGGTATTACTTCTGTGAACTTCGGGTTATTAATTGTGGACCATATTCATTTTC
 AGTACAATGGCTTTTTATTTGGATTAATGCTACTCTCCATTGCACGATTATTTAGAAAAAGGCATATGGA
 AGGAGCATTTCTCTTTGCTGTTCTCCTACATTTCAAGCATATCTACCTCTATGTAGCACCAGCTTATGGT
 GTATATCTGCTGCGATCCTACTGTTTCACTGCAAATAAACAGATGGGTCTATTCGATGGAAGAGTTTCA
 GCTTTGTTGCTGTTATTTCCCTGGGACTGGTGTGTTTTCTAGTTTCTGCTCTTTCATTGGGTCTTTCTC
 GGCCTTGAATCAGCTGCCTCAAGTCTTTTCCGACTCTTTCCTTTCAAGAGGGGCTCTGTGCATGCATAT
 TGGGCTCCAAACTTCTGGGCTTTGTACAATGCTTTGGACAAAGTGTGTCTGTATCGGTTTGAAATTTGA
 AATTTCTTGATCCCAACAATATCCCAAGGCTCAATGACAAGTGGTTGGTTCAGCAGTTCCAACACAC
 AGTCCTCCCTCAGTGACTCCCTGGCAACCCTCATCTGCACACTGATTGCCATATTGCCCTCTATTTTC
 TGTCTTTGGTTTAAACCCCAAGGCCCAGAGGCTTTCTCGATGTCTAACTCTTTGTGCCTTTGAGCTCCT
 TTATGTTTGGGTGGCATGTTTCATGAAAAAGCCATACTTCTAGCAATTTCCCAATGAGCCTTTTGTCTGT
 GGGAAAAAGCAGGAGACGCTTCGATTTTTCTGATTCTGACCACAACAGGACATTATCCCTCTTTCTCTG
 CTCTTCACTGCACCAGAACTTCCATTAATAATCTTACTCATGTTACTATTCACCATATATAGTATTTCTG
 CACTGAAGACTTTATTCAGAAAAAGAAAACTCTTTTAAATTGGATGGAACTTTCTACCTGCTTGGCCT
 GGGGCTCTGGAAGTCTGCTGTGAATTTGTATTCCCTTTCACCTCTGGAAGGTGAAGTACCCCTTCATC
 CCTTTGTTACTAACCTCAGTGTATTGTGCAGTAGGCGTCACATATGCTTGGTTCAAAGTGTATGTTTCAG
 TATTGATTGACTCTGCTATTGGCAAGACAAAGAAACAA

ACGCGTACGCGGCCGCTCGAG – GFP Tag – GTTTAA

Protein Sequence:

>RG200914 representing NM_024079
 Red=Cloning site Green=Tags(s)

MAALTIATGTGNWFSALALGVTLKCLLIPTYHSTDFEVHRNWLAIHSLPISQWYWEATSEWTLDYPPF
 FAWFEYILSHVAKYFDQEMLNHNLYSSRLLFQRFVIFMDVLFVYAVRECKCIDGKKVKGELTEK
 PKFILSVLLLWNFGLLIVDHIHFQYNGFLFGLMLLSIARLFQKRHMEGAFLLAVLLHFKHIYLYVAPAYG
 VYLLRSYCFTANKPDGSIKWSFSFVRVLSLGLVFLVLSALSLGPFLALNQLPQVFSRLFPFKRGLCHAY
 WAPNFWALYNALDKVLSVIGLKLKFLDPNNIPKASMTSGLVQQFQHTVLPVPLATLICTLIAILPSIF
 CLWFKPQGPGRFLRCLTLCALSSFMTGWHVHEKAILLAILPMSLLSVGKAGDASIFLILTTTGHYSLFPL
 LFTAPELPIKILLMLLFTIYSISLKTFRKEKPLFNWMTFYLLGLPLEVCCEFFPFTSWKVKYPIFI
 PLLLTSVYCAVGVTYAWFKLYVSVLIDSAIGTKKKQ

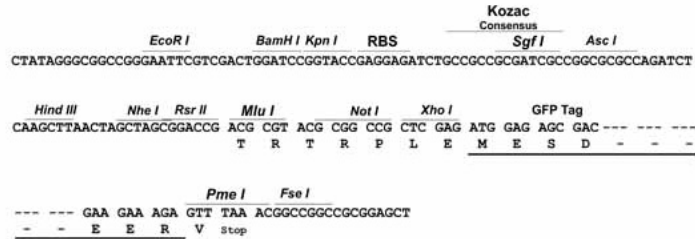
TRTRPLE – GFP Tag – V

Restriction Sites:

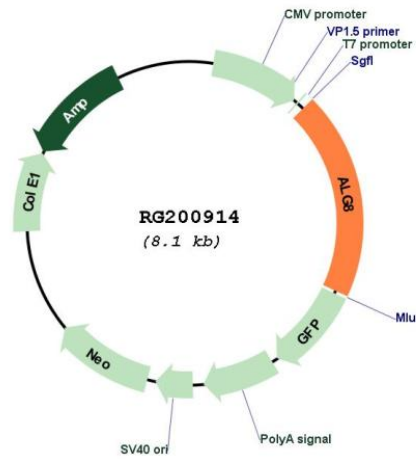
Sgfl-Mlul

Cloning Scheme:

Cloning sites used for ORF Shutting:



Plasmid Map:



ACCN:	NM_024079
ORF Size:	1578 bp
OTI Disclaimer:	The molecular sequence of this clone aligns with the gene accession number as a point of reference only. However, individual transcript sequences of the same gene can differ through naturally occurring variations (e.g. polymorphisms), each with its own valid existence. This clone is substantially in agreement with the reference, but a complete review of all prevailing variants is recommended prior to use. More info
OTI Annotation:	This clone was engineered to express the complete ORF with an expression tag. Expression varies depending on the nature of the gene.
Components:	The ORF clone is ion-exchange column purified and shipped in a 2D barcoded Matrix tube containing 10ug of transfection-ready, dried plasmid DNA (reconstitute with 100 ul of water).
Reconstitution Method:	<ol style="list-style-type: none">1. Centrifuge at 5,000xg for 5min.2. Carefully open the tube and add 100ul of sterile water to dissolve the DNA.3. Close the tube and incubate for 10 minutes at room temperature.4. Briefly vortex the tube and then do a quick spin (less than 5000xg) to concentrate the liquid at the bottom.5. Store the suspended plasmid at -20°C. The DNA is stable for at least one year from date of shipping when stored at -20°C.
RefSeq:	NM_024079.2
RefSeq Size:	1668 bp
RefSeq ORF:	1581 bp
Locus ID:	79053
UniProt ID:	Q9BVK2
Cytogenetics:	11q14.1
Domains:	Alg6_Alg8
Protein Families:	Transmembrane
Protein Pathways:	Metabolic pathways, N-Glycan biosynthesis
Gene Summary:	This gene encodes a member of the ALG6/ALG8 glucosyltransferase family. The encoded protein catalyzes the addition of the second glucose residue to the lipid-linked oligosaccharide precursor for N-linked glycosylation of proteins. Mutations in this gene have been associated with congenital disorder of glycosylation type 1h (CDG-1h). Alternatively spliced transcript variants encoding different isoforms have been identified. [provided by RefSeq, Jul 2008]