

Product datasheet for **RG200910**

RASL11B (NM_023940) Human Tagged ORF Clone

Product data:

Product Type: Expression Plasmids
Product Name: RASL11B (NM_023940) Human Tagged ORF Clone
Tag: TurboGFP
Symbol: RASL11B
Mammalian Cell Selection: Neomycin
Vector: pCMV6-AC-GFP (PS100010)
E. coli Selection: Ampicillin (100 ug/mL)
ORF Nucleotide Sequence: >RG200910 representing NM_023940
Red=Cloning site **Blue**=ORF **Green**=Tags(s)

TTTTGTAATACGACTCACTATAGGGCGGCCGGAATTCGTCGACTGGATCCGGTACCGAGGAGATCTGCC
GCC**CGATCGCC**

ATGCGCCTCATTGAGAACATGTGCACCATCGCCGAGTACCCCGCGCCGGGCAACGCCGGCCTCCGACT
GCTGTGTGGGCGCCGCCGCCGCCCTGGTCAAGATCGCCGTGGTGGGCGCCAGCGCGCTGGGCAAGAC
CGCACTGGTGGTCCGGTTCCTCACCAAACGATTCATCGGTGACTATGAAAGAAATGCAGGTAATCTCTAT
ACTAGACAAGTTCAGATAGAAGGTGAAACCCTGGCTCTTCAGGTTCAAGACACTCCAGGTATTCAGGTCC
ATGAGAACAGCCTGAGCTGCAGTGAACAGCTGAATAGGTGCATTCGCTGGGCAGATGCTGTGGTATCGT
TTTCTCCATCACTGACTACAAGAGCTATGAACTCATCAGCCAGCTCCACCAGCAGCTGCAGCAGCTACAC
CTGGGCACCCGGCTGCCTGTGGTGGTCTGTGGCCAACAAAGCTGACCTGTTGCACATCAAACAGGTTGACC
CTCAGCTTGGACTGCAGCTAGCCAGCATGCTAGGCTGCTCATTCTATGAAGTGTCTGTGAGTAAAATTA
TAATGATGTCTACAGCGCCTTCCACGCTCTGTAAAGAGGTCAGTCACAAACAGCAGCCTAGCAGTACA
CCCGAGAAGCGAAGAACCCTCCCTCATTCCAGGCCCAAGTCACCCAACATGCAGGACCTGAAGAGGAGGT
TTAAGCAAGCCCTCTGCCAAAGTGAGGACTGTACCTCCGTC

ACGCGTACGCGGCCGCTCGAG - GFP Tag - GTTTAA

Protein Sequence: >RG200910 representing NM_023940
Red=Cloning site **Green**=Tags(s)

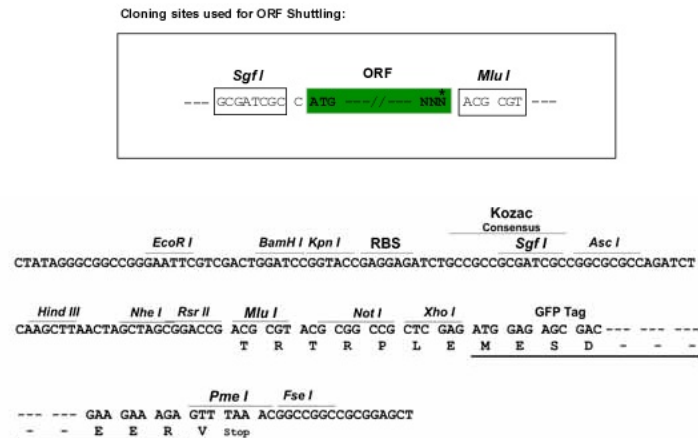
MRLIQNMCTIAEYPAPGNAAASDCCVGAAGRRLVKIIVVGASVGVKLTALVVRFLTKRFIGDYERNAGNLY
TRQVQIEGETLALQVQDTPGIQVHENSLSQSEQLNRCIRWADAVVIVFSITDYKSYELISQLHQHVQQLH
LGTRLPVVVVANKADLLHIKQVDPQLGLQLASMLGCSFYEVSVSENYNDVVSFAFHVLCKEVSHKQPPSS
PEKRRSLIPRPKSPNMQDLKRRFKQALSAKVRTVTSV

TRTRPLE - GFP Tag - V



Restriction Sites: SgfI-MluI

Cloning Scheme:



ACCN: NM_023940

ORF Size: 744 bp

OTI Disclaimer: The molecular sequence of this clone aligns with the gene accession number as a point of reference only. However, individual transcript sequences of the same gene can differ through naturally occurring variations (e.g. polymorphisms), each with its own valid existence. This clone is substantially in agreement with the reference, but a complete review of all prevailing variants is recommended prior to use. [More info](#)

OTI Annotation: This clone was engineered to express the complete ORF with an expression tag. Expression varies depending on the nature of the gene.

Components: The ORF clone is ion-exchange column purified and shipped in a 2D barcoded Matrix tube containing 10ug of transfection-ready, dried plasmid DNA (reconstitute with 100 ul of water).

Reconstitution Method:

1. Centrifuge at 5,000xg for 5min.
2. Carefully open the tube and add 100ul of sterile water to dissolve the DNA.
3. Close the tube and incubate for 10 minutes at room temperature.
4. Briefly vortex the tube and then do a quick spin (less than 5000xg) to concentrate the liquid at the bottom.
5. Store the suspended plasmid at -20°C. The DNA is stable for at least one year from date of shipping when stored at -20°C.

RefSeq: [NM_023940.3](#)

RefSeq Size: 1979 bp

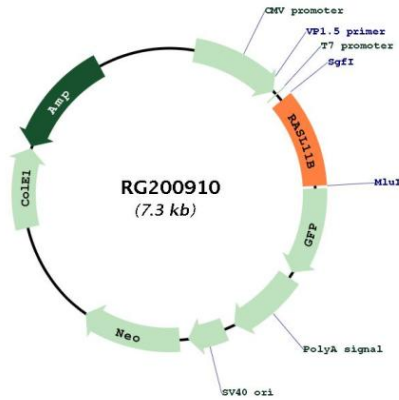
RefSeq ORF: 747 bp

Locus ID: 65997

UniProt ID: [Q9BPW5](#)

Cytogenetics: 4q12
Domains: ras, RAS, RHO, RAB
Protein Families: Stem cell - Pluripotency
Gene Summary: RASL11B is a member of the small GTPase protein family with a high degree of similarity to RAS (see HRAS, MIM 190020) proteins.[supplied by OMIM, Nov 2008]

Product images:



Circular map for RG200910