

Product datasheet for **RG200888**

XPNPEP3 (NM_022098) Human Tagged ORF Clone

Product data:

Product Type:	Expression Plasmids
Product Name:	XPNPEP3 (NM_022098) Human Tagged ORF Clone
Tag:	TurboGFP
Symbol:	XPNPEP3
Synonyms:	APP3; ICP55; NPHPL1
Mammalian Cell Selection:	Neomycin
Vector:	pCMV6-AC-GFP (PS100010)
E. coli Selection:	Ampicillin (100 ug/mL)



[View online »](#)

ORF Nucleotide Sequence:

>RG200888 representing NM_022098
 Red=Cloning site Blue=ORF Green=Tags(s)

TTTTGTAATACGACTCACTATAGGGCGGCCGGAATTCGTCGACTGGATCCGGTACCGAGGAGATCTGCC
 GCC**CGGATCGCC**

ATGCCTTGGCTGCTCTCAGCCCCAAGCTGGTTCCCGCTGTAGCAAACGTCGCGGCTCTCAGGATGTA
 TGTGTGTTACACAGCAAGGTACTCCCTTCAGCCTGTCCAGAAAAGGAGATTCCAAACCGATACTTAGG
 CCAGCCCAGCCCCTTTACACACCCACACCTCCTCAGACCAGGGGAGGTAAGTCCAGGACTATCTCAGGTG
 GAATATGCACTTCGCAGACACAACTAATGTCTCTGATCCAGAAGGAAGCTCAAGGGCAGAGTGGGACAG
 ACCAGACAGTGGTTGTGCTCTCAACCTACATACTACATGAGCAACGATATCCCTATACTTTCCACCA
 AGACAACAATTCCTGTACCTATGTGGATTCCAAGAGCCTGATAGCATTCTTGCCTTCAGAGCCTCCCT
 GGCAAACAATTACCATCACACAAAGCCATACTTTTGTGCCTCGCGGAGATCCCAGTCGAGAAGTCTGGG
 ATGGTCCGCGATCTGGCACTGATGGAGCAATAGCTCTAACTGGAGTAGACGAAGCCTATACGCTAGAAGA
 ATTTCAACATCTTCTACCAAAAATGAAAGCTGAGACGAACATGGTTTGGTATGACTGGATGAGGCCCTCA
 CATGCACAGTTCCTCTGACTATATGCAGCCCTGACTGAGGCCAAAGCCAAGGCAAGAAACAAGGTTCC
 GGGGTGTTTCAGCAGCTGATACAGCGCCTCCGGCTGATCAAGTCTCCTGCAGAAAATGAACGAATGCAGAT
 TGCTGGGAAGCTGACATCACAGGCTTTCATAGAAAACCATGTTACCAGTAAAGCCCTGTGGAAGAAGCC
 TTTCTTTATGCTAAGTTTGAATTTGAATGCCGGGCTCGTGGCGCAGACATTTTAGCCTATCCACCTGTGG
 TGGCTGGTGGTAAATCGGTCAAACACTTTGCACTATGTGAAAAATAATCAACTCATCAAGGATGGGAAAT
 GGTGCTTCTGGATGGAGTTGTGAGTCTTCTGCTATGTGAGTGACATCACACGTACGTGGCCAGTCAAT
 GGCAGGTTACCCGACCTCAGGCAGAACTCTATGAAGCCGTTCTAGAGATCCAAAGAGATTGTTTGGCCC
 TCTGCTCCCTGGGACAAGCTTGGAGAATCTACAGCATGATGCTGACCCTGATAGGACAGAACTTAA
 AGACTTGGGGATCATGAAGAACATTAAGGAAAATAATGCCTTCAAGGCTGCTCGAAAATACTGTCTCAT
 CATGTTGGCCACTACCTCGGGATGGATGTCATGACACTCCAGACATGCCCGTTCCCTCCCTCTGCAGC
 CTGGGATGGTAAATCACAATTGAGCCCGCATTTATATTCCAGAGGATGACAAAGATGCCCCAGAGAAGTT
 TCGGGGCTTGGTGTACGAATTGAGGATGATGTAGTGGTACTCAGGACTCACCTTTCATCTTTCTGCA
 GACTGTCCCAAAGAGATGAATGACATTGAACAGATATGCAGCCAGGCTTCT

ACGCGTACGCGGCCGCTCGAG - GFP Tag - GTTTAA

Protein Sequence:

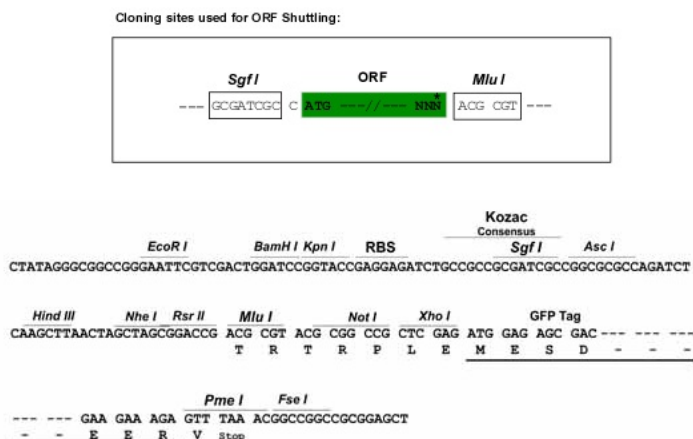
>RG200888 representing NM_022098
 Red=Cloning site Green=Tags(s)

MPWLLSAPKLVPAVANVRGLSGCMLCSQRRYSLQVPERRIPNRYLGQPSPFTHPHLLRPGEVTPGLSQV
 EYALRRHKLMSLIQKEAQGQSGTDQTVVVL SNPTYYSNDIPYTFHQDNNFLYLCGFQEPDSILVLQSLP
 GKQLPSHKAILFVPRRDP SRELWDGPRSGTDGAIAL TGVEAYTLEEFQHLLPKMKAETNMVWYDWMRPS
 HAQLHSDYMQPLTEAKAKSKNKVRGVQQLIQRLRLIKSPA EIERMQIAGKLT SQA F IETMFTSKAPVEEA
 FLYAKFEFECRARGADILAYPPV VAGGNRSNTLHYVKNNQLIKDGEMVLLDGGCESSCYVSDITRTWPVN
 GRFTAPQAELEYAVLEIQRDCLALCFPGT SLENIYSMMLTLIGQKLDL GIMKNIKENNAFKAARKYCPH
 HVGHYLGMDVHDT PDMPRSLPLQPGMVI TIEPGIYIPEDDKDAPEKFRGLGVRIEDDVVVTQDSPFILSA
 DCPKEMNDIEQICSQAS

TRTRPLE - GFP Tag - V

Restriction Sites:

Sgfl-MluI

Cloning Scheme:


ACCN: NM_022098

ORF Size: 1521 bp

OTI Disclaimer: The molecular sequence of this clone aligns with the gene accession number as a point of reference only. However, individual transcript sequences of the same gene can differ through naturally occurring variations (e.g. polymorphisms), each with its own valid existence. This clone is substantially in agreement with the reference, but a complete review of all prevailing variants is recommended prior to use. [More info](#)

OTI Annotation: This clone was engineered to express the complete ORF with an expression tag. Expression varies depending on the nature of the gene.

Components: The ORF clone is ion-exchange column purified and shipped in a 2D barcoded Matrix tube containing 10ug of transfection-ready, dried plasmid DNA (reconstitute with 100 ul of water).

Reconstitution Method:

1. Centrifuge at 5,000xg for 5min.
2. Carefully open the tube and add 100ul of sterile water to dissolve the DNA.
3. Close the tube and incubate for 10 minutes at room temperature.
4. Briefly vortex the tube and then do a quick spin (less than 5000xg) to concentrate the liquid at the bottom.
5. Store the suspended plasmid at -20°C. The DNA is stable for at least one year from date of shipping when stored at -20°C.

RefSeq: [NM_022098.2](#), [NP_071381.1](#)

RefSeq Size: 3060 bp

RefSeq ORF: 1524 bp

Locus ID: 63929

UniProt ID: [Q9NQH7](#)

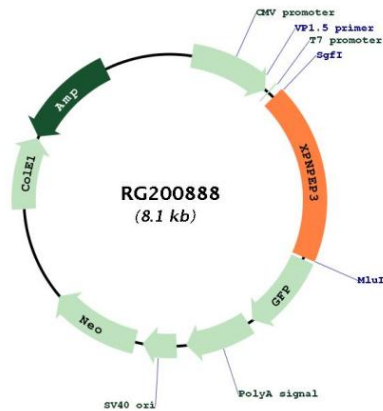
Cytogenetics: 22q13.2

Domains: Peptidase_M24, AMP_N

Protein Families: Druggable Genome, Protease

Gene Summary: The protein encoded by this gene belongs to the family of X-pro-aminopeptidases that utilize a metal cofactor, and remove the N-terminal amino acid from peptides with a proline residue in the penultimate position. This protein has been shown to localize to the mitochondria of renal cells, and have a role in ciliary function. Mutations in this gene are associated with nephronophthisis-like nephropathy-1. Alternatively spliced transcript variants encoding different isoforms have been noted for this gene, however, expression of some of these isoforms in vivo is not known.[provided by RefSeq, Mar 2011]

Product images:



Circular map for RG200888