

Product datasheet for **RG200887**

C19orf50 (KXD1) (NM_024069) Human Tagged ORF Clone

Product data:

Product Type: Expression Plasmids
Product Name: C19orf50 (KXD1) (NM_024069) Human Tagged ORF Clone
Tag: TurboGFP
Symbol: C19orf50
Synonyms: BORCS4; C10orf50; C19orf50; KXDL; MST096; MSTP096
Mammalian Cell Selection: Neomycin
Vector: pCMV6-AC-GFP (PS100010)
E. coli Selection: Ampicillin (100 ug/mL)
ORF Nucleotide Sequence: >RG200887 representing NM_024069
 Red=Cloning site Blue=ORF Green=Tags(s)

TTTTGTAATACGACTCACTATAGGGCGCCGGGAATTCGTCGACTGGATCCGGTACCGAGGAGATCTGCC
 GCC**CGATCGCC**

ATGGACCTCCCGACTCGGCCTCGAGGGTCTTCTGCGGCCGCATCCTGAGCATGGTGAACACAGATGATG
 TCAACGCCATCATCTGGCCCAGAAGAATGCTGGACCGCTTTGAGAAGACCAATGAGATGCTGCTCAA
 CTTCAACAACCTGTCCAGTGCCCGCTGCAGCAGATGAGCGAACGCTTCTGCACCACACGAGGACCCTA
 GTAGAGATGAAACGGGACCTGGACAGCATCTCCGCCGTATCAGGACGCTGAAAGGGAACTGGCCAGGC
 AGCACCCAGAGGCCTTCAGCCATATCCCAGAGGCATCCTTCTGGAGGAAGAGGATGAAGACCCCATCCC
 ACCCAGCACCACGACCACCATTCACCTCAGAACAGAGCACGGGCTCATGTGACACCAGCCCCGACACC
 GTCTCGCCCTCCCTGAGCCCCGGCTTCGAGGACCTGTCCCATGTCCAGGCTGGCTCCCCAGCCATCAACG
 GCCGACCCAGACAGATGACGAGGAGATGACGGCGCAA

ACGCGTACGCGGCCGCTCGAG - GFP Tag - GTTTAA

Protein Sequence: >RG200887 representing NM_024069
 Red=Cloning site Green=Tags(s)

MDLPDSASRVFCGRILSMVNTDDVNAILAQNMLDRFEKTNEMLLNFNNLSSARLQQMSERFLHHTRTL
 VEMKRDLDISIFRRIRTLKGLARQHPEAFSHIPEASFLLEEDEDPIPPSTTTTIIATSEQSTGSCDTPDPT
 VSPSLSPGFEDLSHVQAGSPAINGRSQTDDEEMTGE

TRTRPLE - GFP Tag - V

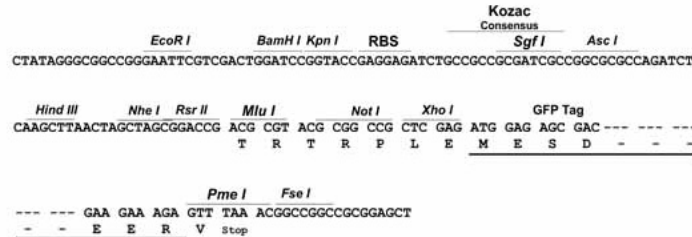
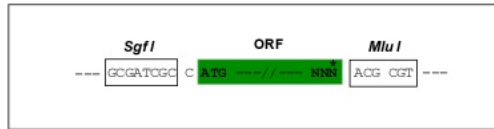
Restriction Sites: Sgfl-MluI



[View online »](#)

Cloning Scheme:

Cloning sites used for ORF Shuttling:



ACCN: NM_024069

ORF Size: 528 bp

OTI Disclaimer: The molecular sequence of this clone aligns with the gene accession number as a point of reference only. However, individual transcript sequences of the same gene can differ through naturally occurring variations (e.g. polymorphisms), each with its own valid existence. This clone is substantially in agreement with the reference, but a complete review of all prevailing variants is recommended prior to use. [More info](#)

OTI Annotation: This clone was engineered to express the complete ORF with an expression tag. Expression varies depending on the nature of the gene.

Components: The ORF clone is ion-exchange column purified and shipped in a 2D barcoded Matrix tube containing 10ug of transfection-ready, dried plasmid DNA (reconstitute with 100 ul of water).

Reconstitution Method:

1. Centrifuge at 5,000xg for 5min.
2. Carefully open the tube and add 100ul of sterile water to dissolve the DNA.
3. Close the tube and incubate for 10 minutes at room temperature.
4. Briefly vortex the tube and then do a quick spin (less than 5000xg) to concentrate the liquid at the bottom.
5. Store the suspended plasmid at -20°C. The DNA is stable for at least one year from date of shipping when stored at -20°C.

RefSeq: [NM_024069.2](#), [NP_076974.1](#)

RefSeq Size: 1435 bp

RefSeq ORF: 531 bp

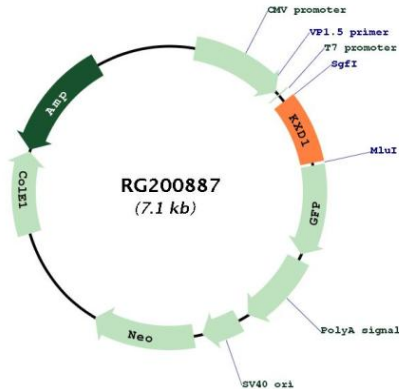
Locus ID: 79036

UniProt ID: [Q9BQD3](#)

Cytogenetics: 19p13.11

Gene Summary: As part of the BORC complex may play a role in lysosomes movement and localization at the cell periphery. Associated with the cytosolic face of lysosomes, the BORC complex may recruit ARL8B and couple lysosomes to microtubule plus-end-directed kinesin motor (PubMed:25898167). May be involved in the biogenesis of lysosome-related organelles such as melanosomes (By similarity).[UniProtKB/Swiss-Prot Function]

Product images:



Circular map for RG200887