

## Product datasheet for **RG200886**

### Vgl4 (VGLL4) (NM\_014667) Human Tagged ORF Clone

#### Product data:

|                           |   |
|---------------------------|---|
| Product Type:             | Expression Plasmids   |
| Product Name:             | Vgl4 (VGLL4) (NM_014667) Human Tagged ORF Clone                             |
| Tag:                      | TurboGFP  |
| Symbol:                   | Vgl4  |
| Synonyms:                 | VGL-4   |
| Mammalian Cell Selection: | Neomycin  |
| Vector:                   | pCMV6-AC-GFP (PS100010)   |
| E. coli Selection:        | Ampicillin (100 ug/mL)  |
| ORF Nucleotide Sequence:  | >RG200886 representing NM_014667<br>Red=Cloning site Blue=ORF Green=Tags(s) |

TTTTGTAATACGACTCACTATAGGGCGGCCGGAATTCGTCGACTGGATCCGGTACCGAGGAGATCTGCC  
GCC**CGATCGCC**

ATGGAGACGCCATTGGATGTTTTGTCCAGGGCAGCATCTCTGGTGCATGCTGATGACGAAAAACGCGAAG  
CTGCTCTCAGGGGAGAACCAGAATGCAGACCCTGCCGGTGGCCTCTGCCCTCAGCAGTACCCGACCCGG  
CCCTCCCCAATCAGCCCAGCAAGAGGAAGTTCAGCATGGAGCCAGGTGACGAGGACCTAGACTGTGAC  
AACGACCAGTCTCCAAAATGAGTCGCATCTTCAACCCCATCTGAACAAGACTGCCAATGGAGACTGCC  
GCAGAGACCCCCGGGAGCGGAGCCGAGCCCATCGAGCGCGCTGTGGCCCCACCATGAGCCTGCACGG  
CAGCCACCTGTACACCTCCCTCCCCAGCCTTGGCCTGGAGCAGCCCTCGCACTGACCAAGAACAGCCTG  
GACGCCAGCAGGCCAGCCGGCCTCTCGCCCACTGACCCCGGGGGAGCGGCAGCAGAACCAGCCCTCCG  
TGATCACCTGTGCTCGGCTGGCGCCGCAACTGCAACCTCTCGCACTGCCCATCGCGCACAGCGGCTG  
TGCCGCGCCCGGGCCTGCCAGCTACCGGAGGCCACCGAGCGCTGCCACCACCTGTGACCCCGTGGTGGAG  
GAGCATTTCCGCAGGAGCCTGGGCAAGAATTACAAGGAGCCCGAGCCGGCACCAACTCCGTGTCCATCA  
CGGGCTCCGTGGACGACCACTTTGCCAAAGCTCTGGGTGACACGTGGCTCCAGATCAAAGCGGCCAAGGA  
CGGAGCATCCAGCAGCCCTGAGTCCGCCTCTCGCAGGGGCCAGCCCGCCAGCCCCCTGCCACATGGTC  
AGCCACAGTCACTCCCCCTCTGTGGTCTCC

**ACGCGT**ACGCGGCCGCTCGAG - GFP Tag - GTTTAA



[View online »](#)

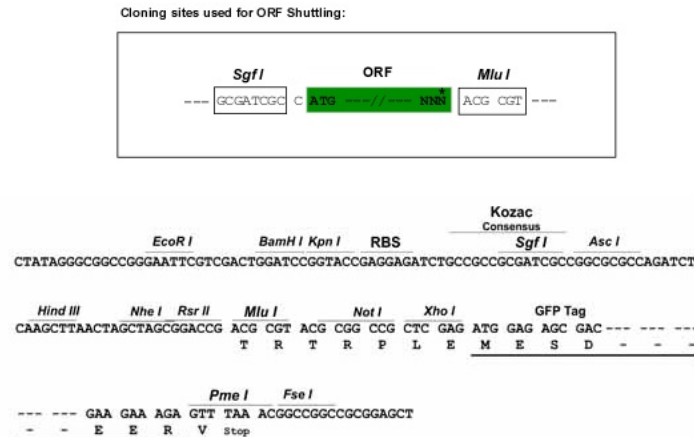
**Protein Sequence:** >RG200886 representing NM\_014667  
Red=Cloning site Green=Tags(s)

METPLDVL SRAASLVHADDEKREAAALRGEPRMQTL PVASALSSHRTGPPPI SPSKRKFSMEPGDEDLDCD  
 NDHYSKMSRI FNPHLNKTANGDCRRDPRERSRSP IERAVPTMSLHGSHLYTSLPSL GLEQPLALTKNSL  
 DASRPAGL SPTLTPGERQQNRPSVITCASAGARN CNLSHCPIAHS GCAAPGPASYRRPPSAATTCDPVVE  
 EHFRRSLGKNYKEPEPAPNSVSI TGSVDDHFAKALGDTWLQ IAKKDGASSSPESASRRGQPASPSAHMV  
 SHSHSPSVVS

TRTRPLE - GFP Tag - V

**Restriction Sites:** SgfI-MluI

**Cloning Scheme:**



**ACCN:** NM\_014667

**ORF Size:** 870 bp

**OTI Disclaimer:** The molecular sequence of this clone aligns with the gene accession number as a point of reference only. However, individual transcript sequences of the same gene can differ through naturally occurring variations (e.g. polymorphisms), each with its own valid existence. This clone is substantially in agreement with the reference, but a complete review of all prevailing variants is recommended prior to use. [More info](#)

**OTI Annotation:** This clone was engineered to express the complete ORF with an expression tag. Expression varies depending on the nature of the gene.

**Components:** The ORF clone is ion-exchange column purified and shipped in a 2D barcoded Matrix tube containing 10ug of transfection-ready, dried plasmid DNA (reconstitute with 100 ul of water).

**Reconstitution Method:**

1. Centrifuge at 5,000xg for 5min.
2. Carefully open the tube and add 100ul of sterile water to dissolve the DNA.
3. Close the tube and incubate for 10 minutes at room temperature.
4. Briefly vortex the tube and then do a quick spin (less than 5000xg) to concentrate the liquid at the bottom.
5. Store the suspended plasmid at -20°C. The DNA is stable for at least one year from date of shipping when stored at -20°C.

**RefSeq:** [NM\\_014667.1](#), [NP\\_055482.1](#)

**RefSeq Size:** 3539 bp

**RefSeq ORF:** 873 bp

**Locus ID:** 9686

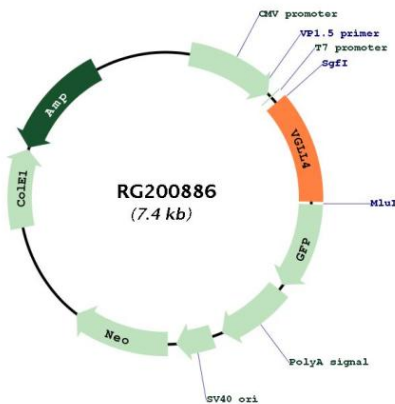
**UniProt ID:** [Q14135](#)

**Cytogenetics:** 3p25.3-p25.2

**Protein Families:** Transcription Factors

**Gene Summary:** May act as a specific coactivator for the mammalian TEFs.[UniProtKB/Swiss-Prot Function]

**Product images:**



Circular map for RG200886