

Product datasheet for **RG200841**

TTLL12 (NM_015140) Human Tagged ORF Clone

Product data:

Product Type:	Expression Plasmids
Product Name:	TTLL12 (NM_015140) Human Tagged ORF Clone
Tag:	TurboGFP
Symbol:	TTLL12
Synonyms:	dj526114.2
Mammalian Cell Selection:	Neomycin
Vector:	pCMV6-AC-GFP (PS100010)
E. coli Selection:	Ampicillin (100 ug/mL)



[View online »](#)

ORF Nucleotide Sequence:

>RG200841 representing NM_015140
 Red=Cloning site Blue=ORF Green=Tags(s)

TTTTGTAATACGACTCACTATAGGGCGGCCGGAATTCGTCGACTGGATCCGGTACCGAGGAGATCTGCC
 GCC**CGATCGCC**

ATGGAGGCCGAGCGGGTCCCGAGCGCCGCTGCGGAGCGTAGCAGCCGGCCAGACCCGGAGGAG
 GCGCGCAGGCCTTGCCGAGTTCGCGGCCGCTGCACGCCCGCGCTGCGCGCTTCGGGGTCCCGAACG
 TTAATGGGGCGCCTCCTGCACAAGCTGGAGCAGGAGTTTTCGACGCTGGGAAGTGTGGGATCATG
 CAAGTGGAGGAGGTAGAAGAGGAGGAGGACGAGGCAGCCCGGAGGTGCGGAAGCAGCAGCCCAACCCGG
 GGAACGAGCTGTGCTACAAGTTCATCGTACCAGGAGAGCGGGTCCAGGCAGCCACCCCAACAGCAT
 TTCTCTCATCGACCAGCCTGGACGTGCCGTGTGGAGCACGCGGCCAGCAGCTGCAGCAGGTGCCCGGG
 CTGCTGCACCGCATGGCCAACCTGATGGCATTGAGTTCACGGTGTGCTGCCAGTACAGAGGCTGTGG
 CCCTGGTGTGGAGGAGATGTGAAGTTCAACCAGACCTACCAGCTGGCCATGGGACAGCTGAGGAGAA
 GATGCCGGTGTGGTATATCATGGACGAGTTCGGTTCGCGGATCCAGCACGCGGACGTGCCAGCTTCGCC
 ACGGCACCTTCTTCTACATGCCGACGAGGTGGCCTACACGCTGCTGTGCCCTTGAGGGACCTGGACA
 CTGGCGAGGAGGTGACCCGAGACTTTGCCTACGGAGAGACGGACCCCTGATCCGGAAGTGCATGTGCT
 GCCCTGGGCCCCACCGACATGCTGGACCTCAGCTTTGCACACCCGAGCCGCCCGGAGCACTACCAG
 GCCATTCTGGAGGAAAACAAGGAGAAGTGCCTTGCATCAACCCCGTGGTGCACCCCAACCGCCACA
 TCTTCAAGGTCTACACGGACGTGCAGCAGGTGGCCAGCAGCCTCACCCACCCGCGCTTACCCTCACCCA
 GAGTGAGGCGGACGCCGACATCCTCTTCAACTTCTCACTTCAAGGACTACAGGAACTCAGCCAGGAG
 AGGCCAGGCGTGTGCTGAACCAGTTCCTCGAGAACCTGCTGACTGTCAAGGACTGCCTGGCCTCCA
 TCGCGCGCCGGCAGGTGGCCCGAGGGCCACCCTGGCTGGTCCCGAACCTTCAACTCGCAGCTGAGT
 GCCCAGTTTGTGACTACTTCCAGCAGCGGAAAGGTGGGGCAGGACAACCACTGGATCTGCAAGCCC
 TGGAACTGGCGCGCAGCCTGGACACCCACGTCAACCAAGAGCCTGCACAGCATATCCGGCACCGAGAGA
 GCACCCCAAGGTTGTGTCCAAGTACATCGAAAGTCCCCTGTTGTTCTTCGAGAAGACGTGGGAAAGGT
 CAAGTTCGACATCCGCTACATCGTGTGCTGCGGTGAGTGGCCCTACGGTGTTCGTGTATGATGTG
 TTCTGGTGTGGTCTTCCAACCGGGCTTTGCACTCAACGACCTGGATGACTACGAGAAGCACTTACCG
 TCATGAATATGACCCGGATGTGGTGTGAAGCAGGTGCACTGTGAAGAGTTCATCCCGAGTTTGAGAA
 GCAATACCCAGAATTTCCCTGGACGACGTCCAGGCTGAGATCTCCGGGCTTACGGAGCTGTTCCAG
 GTGGCCTGTGCCAAGCCACCACCTGGGCTCTGCGACTACCCCTCATCCGGGCCATGTATGCCGTGCG
 ACCTCATGCTGAAGTGGGACAACGGCCAGATGGAAGGCGGGTGTGACGCCGAGATCCTGGAGGTGAA
 CTTCAACCCGACTGTGAGCGAGCCTGCAGGTACCACCCACCTTCTTCAACGACGTCTTACGACCTTG
 TTTCTGGACCAGCCCGTGGCTGCCACGTTACCTGCCTTGTC

ACGCGTACGCGGCCGCTCGAG – GFP Tag – GTTTAA

Protein Sequence:

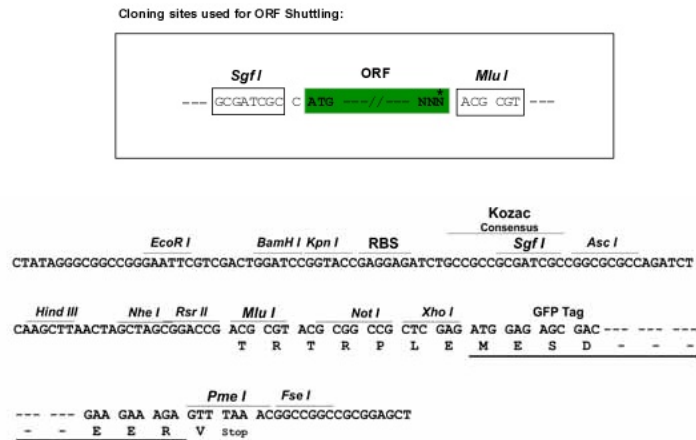
>RG200841 representing NM_015140
 Red=Cloning site Green=Tags(s)

MEAERGPERRPAERSSPGQTPEEGAQALAEFAALHGPALRASGVPERYWGRLHLKLEHEVFDAGEVFGIM
 QVEVEVEEEDAAREVRKQPNPNEGELCYKVIIVTRESGLQAAHPNSIFLIDHAWTCRVEHARQQLQVPG
 LLHRMANLMGIEFHGELPSTEAVALEEMWKFNQTYQLAHGTAEEKMPVWYIMDEFSGRIQHADVPSFA
 TAPFFYMPQQVAYTLLWPLRDLDTGEEVTRDFAYGETDPLIRKCM LLPWAPTMDL DLSSCTPEPPAEHYQ
 AILEENKEKLPLDINPVVHPHGHIKVVYTDVQQVASSLTHPRFTLTQSEADADILFNF SHFKDYRKL SQE
 RPYVLLNQFPCENLLTVKDCLAS IARRAGGPEGPPWLPRTFNLRTEL PQFVSYFQQRERWGEDNHWICKP
 WNLARSLDTHVTKSLHSIIRHRESTPKVVSKYIESPVLFLREDVGKVKFDIRYIVLLRSVRPLRLFVYDV
 FWLRFNSRAFALNDLDDYEKHFVVMNYDPDVVLKQVHCEEIPEFEKQYPEFPWTDVQAEIFRAFTL FQ
 VACAKPPPLGLCDYPSRAMYAVDMLKWDNGPDGRRVMQPQILEVNFNPD CERACRYHPTFFNDV FSTL
 FLDQPGGCHVTCLV

TRTRPLE – GFP Tag – V

Restriction Sites: Sgfl-MluI

Cloning Scheme:



ACCN: NM_015140

ORF Size: 1932 bp

OTI Disclaimer: The molecular sequence of this clone aligns with the gene accession number as a point of reference only. However, individual transcript sequences of the same gene can differ through naturally occurring variations (e.g. polymorphisms), each with its own valid existence. This clone is substantially in agreement with the reference, but a complete review of all prevailing variants is recommended prior to use. [More info](#)

OTI Annotation: This clone was engineered to express the complete ORF with an expression tag. Expression varies depending on the nature of the gene.

Components: The ORF clone is ion-exchange column purified and shipped in a 2D barcoded Matrix tube containing 10ug of transfection-ready, dried plasmid DNA (reconstitute with 100 ul of water).

Reconstitution Method:

1. Centrifuge at 5,000xg for 5min.
2. Carefully open the tube and add 100ul of sterile water to dissolve the DNA.
3. Close the tube and incubate for 10 minutes at room temperature.
4. Briefly vortex the tube and then do a quick spin (less than 5000xg) to concentrate the liquid at the bottom.
5. Store the suspended plasmid at -20°C. The DNA is stable for at least one year from date of shipping when stored at -20°C.

RefSeq: [NM_015140.4](#)

RefSeq Size: 3353 bp

RefSeq ORF: 1935 bp

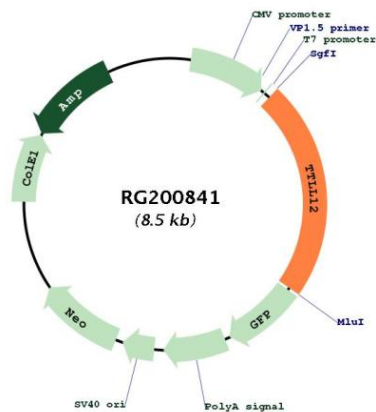
Locus ID: 23170

UniProt ID: [Q14166](#)

Cytogenetics: 22q13.2

Gene Summary: Negatively regulates post-translational modifications of tubulin, including detyrosination of the C-terminus and polyglutamylation of glutamate residues (PubMed:20162578, PubMed:23251473). Also, indirectly promotes histone H4 trimethylation at 'Lys-20' (H4K20me3) (PubMed:23251473). Probably by controlling tubulin and/or histone H4 post-translational modifications, plays a role in mitosis and in maintaining chromosome number stability (PubMed:20162578, PubMed:23251473). During RNA virus-mediated infection, acts as a negative regulator of the DDX58/RIG-I pathway by preventing MAVS binding to TBK1 and IKBKE (PubMed:28011935).[UniProtKB/Swiss-Prot Function]

Product images:



Circular map for RG200841