

Product datasheet for **RG200833**

KLHL23 (NM_144711) Human Tagged ORF Clone

Product data:

| | |
|---------------------------|---|
| Product Type: | Expression Plasmids |
| Product Name: | KLHL23 (NM_144711) Human Tagged ORF Clone |
| Tag: | TurboGFP |
| Symbol: | KLHL23 |
| Synonyms: | DITHP |
| Mammalian Cell Selection: | Neomycin |
| Vector: | pCMV6-AC-GFP (PS100010) |
| E. coli Selection: | Ampicillin (100 ug/mL) |



[View online »](#)

ORF Nucleotide Sequence:

>RG200833 representing NM_144711
 Red=Cloning site Blue=ORF Green=Tags(s)

TTTTGTAATACGACTCACTATAGGGCGGCCGGAATTCGTCGACTGGATCCGGTACCGAGGAGATCTGCC
 GCC**CGCATCGCC**

ATGGCTCTAAAAGGACAAGAAGATTATATTTATCTTTTCAAGGATTCAACACATCCAGTGGATTTTCTGG
 ATGCATTCAGAACATTTTACTTGATGGATTATTTACTGATTAATCTTCAAGTGCCTTCAGGCATAAT
 TTTCCATTGTACCCGAGCCGTTTTAGCTGCTTGCAGCAATTATTTTAAGGCAATGTTACAGCTGACATG
 AAAGAAAAATTTAAAAATAAAATAAACTCTCTGGCATCCACCATGATATTCTGGAAGCCTTGTAAT
 ATGCATACACTTCCCAAATTGAAATACTAAAAGAAATGTTCAAAGCCTGCTTGAGGCAGCGGATCTGCT
 ACAGTTCCTTTCAGTAAAGAAGGCTTGTGAGCGGTTTTTGGTAAGGCACTTGGATATTGATAATTGTATT
 GGAATGCACTCCTTTCAGAAATTCATGTGTGCCAGAACTAGAGAAGGAATCTCGAAGAATTCTATGTT
 CAAAGTTAAGGAAGTGGCAACAAGAAGAATTTCTGGAATCAGCCTTGAAAAGTTTCTTTTATCTT
 GTCCAGAAAGAATCTCAGTGTGGAAAGAAGAAGCTATCATAGAGCCAGTTATTAAGTGGACTGCTCAT
 GATGTAGAAAATCGAATTGAATGCCTCTATAATCTACTGAGCTATATCAACATTGATATAGATCCAGTGT
 ACTTAAAAACAGCCTTAGGCCTTCAAAGAAGCTGCCTGCTCACCGAAAAATAAGATCCGCTCCCTAATATA
 CAATGCCTTGAATCCCATGCATAAAGAGATTTCCAGAGGTCCACAGCCACAATGTATATAATTGGAGGC
 TATTACTGGCATCCTTTATCAGAGGTTACATATGGGATCCTTTGACAAATGTTTGGATTGAGGAGCAG
 AAATACCAGATTATACCAGGGAGAGCTATGGTGTACATGTTTAGGACCAACATTTATGTAAGTGGGGG
 CTACAGGACGGATAACATAGAAGCTCTTGACACAGTGTGGATCTATAACAGTGAAGTGTGAATGGACA
 GAAGGTTTGCCAAATGCTCAATGCCAGGTATTACCACTGTGCAGTACCTTGGGTGGCTGTGTCTATGCTT
 TAGGTGGTTACAGAAAAGGGGCTCCAGCAGAAGGCTGAGTTCTATGATCCTTTAAAAGAGAAAATGGAT
 TCCTATTGCAAAACATGATTAAGGTGTGGGAAATGCTACTGCCTGTGTCTTACATGATGTTATCTACGTC
 ATTGGTGGCCACTGTGGCTACAGAGGAAGCTGCACCTATGACAAAAGTTCAGAGCTACAATCCGATATCA
 ACGAATGGAGCCTCATCACCTCCAGTCCACATCCAGAATATGGATTGTGCTCAGTCCGTTTAAAAATAA
 GCTCTATCTAGTCGGTGGACAACTACAATCACAGAATGCTATGACCCTGAACAAAATGAATGGAGAGAG
 ATAGCTCCATGATGGAAGGAGGATGGAGTCCGGTCCCGTCATCATGAATGGATGATTTATGTCAGT
 GAGGATACTCTACTCAAAGGGAACGTATCTTCAGAGCATTGAGAAAATATGATCCAGATCTTAATAAGT
 GAAAATAGTGGTAATCTTCCAGTCCATGCGGTCTCATGGGTGTGTTGTGTGATAATGTC

ACGCGTACGCGGCCGCTCGAG - GFP Tag - GTTTAA

Protein Sequence:

>RG200833 representing NM_144711
 Red=Cloning site Green=Tags(s)

MALKGQEDYIYLFKDDSTHPVDFLDAFRIFYLDGLFTDITLQCPSGIIFHCHRAVLAACSNYFKAMFTADM
 KEKFKNKIKLSGIHHDILEGLVNYAYTSQIEITKRNVSLLLEADLLQFLSVKKACERFLVRHLDIDNCI
 GMHSFAEFHVCPELEKESRRILCSKFKEVWQEEFLEISLEKFLFILSRKNLSVWKEEAIIEPVIKWTAH
 DVENRIECLYNLLSYINIDIDPVYLKLTALGLQRSCLLTENKIRSLIYNALNPMHKEISQRSTATMYIIGG
 YYWHLSEVHIWDPLTNVWIQGAIEIPDYTRESYGVTCGLPNIYVTGGYRTDNIEALDVTWYINSESEWET
 EGLPMLNARYYHCAVTLGGCVYALGGYRKGAPAEAEAFYDPLKEKWIPIANMIKGVGNATACVLHDVIYV
 IGGHCGYRGSTYDKVQSYNSDINWSLITSSPHPEYGLCSVPFENKLYLVGGQTTITECYDPEQNEWRE
 IAPMMERRMECGAVIMNGCIYVTGGYSYSGTYLQSIKYPDLNKWEIVGNLPSAMRSHGCVCVYNV

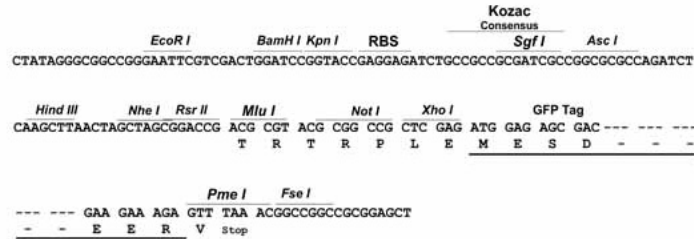
TRTRPLE - GFP Tag - V

Restriction Sites:

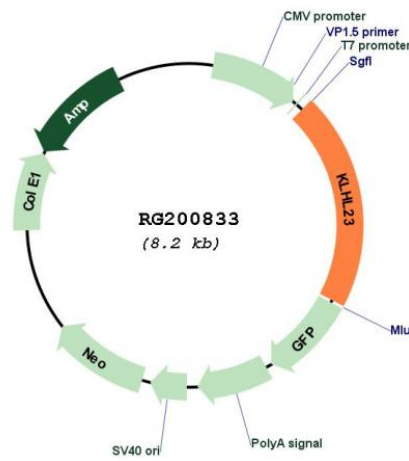
Sgfl-MluI

Cloning Scheme:

Cloning sites used for ORF Shutting:



Plasmid Map:



| | |
|------------------------|---|
| ACCN: | NM_144711 |
| ORF Size: | 1674 bp |
| OTI Disclaimer: | The molecular sequence of this clone aligns with the gene accession number as a point of reference only. However, individual transcript sequences of the same gene can differ through naturally occurring variations (e.g. polymorphisms), each with its own valid existence. This clone is substantially in agreement with the reference, but a complete review of all prevailing variants is recommended prior to use. More info |
| OTI Annotation: | This clone was engineered to express the complete ORF with an expression tag. Expression varies depending on the nature of the gene. |
| Components: | The ORF clone is ion-exchange column purified and shipped in a 2D barcoded Matrix tube containing 10ug of transfection-ready, dried plasmid DNA (reconstitute with 100 ul of water). |
| Reconstitution Method: | <ol style="list-style-type: none">1. Centrifuge at 5,000xg for 5min.2. Carefully open the tube and add 100ul of sterile water to dissolve the DNA.3. Close the tube and incubate for 10 minutes at room temperature.4. Briefly vortex the tube and then do a quick spin (less than 5000xg) to concentrate the liquid at the bottom.5. Store the suspended plasmid at -20°C. The DNA is stable for at least one year from date of shipping when stored at -20°C. |
| RefSeq: | NM_144711.3 , NP_653312.2 |
| RefSeq Size: | 2211 bp |
| RefSeq ORF: | 1677 bp |
| Locus ID: | 151230 |
| UniProt ID: | Q8NBE8 |
| Cytogenetics: | 2q31.1 |