

Product datasheet for **RG200830**

METR N (NM_024042) Human Tagged ORF Clone

Product data:

Product Type: Expression Plasmids
Product Name: METRN (NM_024042) Human Tagged ORF Clone
Tag: TurboGFP
Symbol: METRN
Synonyms: C16orf23; c380A1.2
Mammalian Cell Selection: Neomycin
Vector: pCMV6-AC-GFP (PS100010)
E. coli Selection: Ampicillin (100 ug/mL)
ORF Nucleotide Sequence: >RG200830 representing NM_024042
 Red=Cloning site Blue=ORF Green=Tags(s)

TTTTGTAATACGACTCACTATAGGGCGGCCGGAATTCGTCGACTGGATCCGGTACCGAGGAGATCTGCC
 GCC**CGATCGCC**

ATGGGGTCCCGGCCGGCGCTGCTCTGCGCGCTGTGCTGCGGCCTCCTGGCCCCGGCTGCCCGGCCG
 GCTACTCCGAGGAGCGCTGCAGCTGGAGGGGACGCGCCCTACCCAGGAGCCCGGAGCGTGGGGCAGT
 GGCCCTGGCCTGTGCGGAGGGCGCGTTGAGTGGCTGTACCCGGCTGGGGCGCTGCGCCTGACCCTGGG
 GGCCCCGATCCCAGAGCGCGGCCCGGCATCGCTGTCTGCGGCCGGTGGCGCCCTTCGCGGGCGCCAGG
 TCTTCGCGGAGCGCGCAGGGGGCGCCCTGGAGCTGCTGCTGGCCGAGGGCCCGGGCCCGCAGGGGGCCG
 CTGCGTGCCTGGGGTCCCCGCGAGCGCCGGGCCCTTTCTTGCAGGCCACGCCGACAGGACATCAGC
 CGCCCGCTGGCCGCTTCCGCTTTGAGCTGCGCGAGGACGGGCGCCCCGAGCTGCCCCCGCAGGCCACG
 GTCTCGGCGTAGACGGTGCCTGCAGGCCCTGCAGCGACGCTGAGCTGCTCCTGGCCGATGCACCAGCGA
 CTTTCGTAATTCACGGGATCATCCATGGGGTCAACCATGACGTGGAGTGCAGGAGTCTGTCACTACTGTG
 GTGGCCGCCCGTGTCTCCGCCAGACACCGCCGCTGTTCCAGGCGGGGCGATCCGGGGACAGGGGCTGA
 CCTCCATTCGTACCCACTGCGCTGTGGCGTCCACCCGGGCCAGGCACCTTCTTTCATGGGCTGGAG
 CCGCTTTGGGGAGGCCCGGCTGGGCTGTGCCCCACGATTCCAGGAGTTCGCGCGTGCCTACGAGGCTGCC
 CGTGCTGCCACCTCCACCCCTGCGAGGTGGCGCTGCAC

ACGCGTACGCGGCCGCTCGAG - GFP Tag - GTTTAA



[View online »](#)

Protein Sequence: >RG200830 representing NM_024042
Red=Cloning site Green=Tags(s)

MGFPAAALLCALCCGLLAPAARAGYSEERCSWRGSGLTQEPGSVGQLALACAEGAVEWLYPAGALRLTLG
 GPDPRARPGIACLRPVRPFAGAQVFAERAGGALELLLAEQPGPAGGRCVWRGPRRRALFLQATPHQDIS
 RRVAAFRFELREDGRPELPPQAHGLGVDGACRPCSDAELLAACTSDFVIHGIHGVTHDVELQESVITV
 VAARVLRQTPPLFQAGRSGDQGLTSIRTPLRCGVHPGPGTFLFMGWSRFGEARLGCAPRFQEFRRAYEAA
 RAAHLHPCEVALH

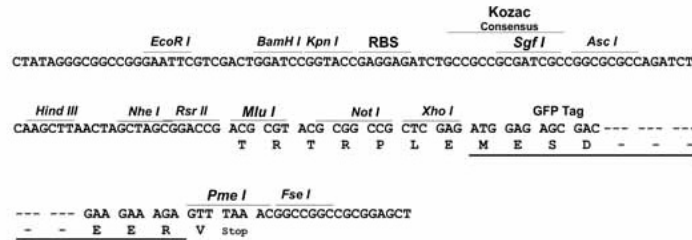
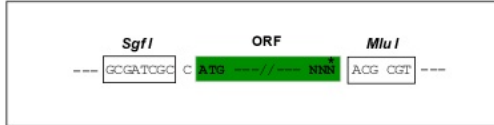
TRTRPLE - GFP Tag - V

Restriction Sites:

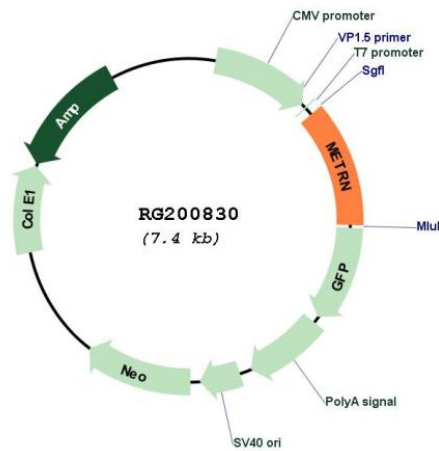
SgfI-MluI

Cloning Scheme:

Cloning sites used for ORF Shuttling:



Plasmid Map:



ACCN: NM_024042

ORF Size: 879 bp

OTI Disclaimer:	The molecular sequence of this clone aligns with the gene accession number as a point of reference only. However, individual transcript sequences of the same gene can differ through naturally occurring variations (e.g. polymorphisms), each with its own valid existence. This clone is substantially in agreement with the reference, but a complete review of all prevailing variants is recommended prior to use. More info
OTI Annotation:	This clone was engineered to express the complete ORF with an expression tag. Expression varies depending on the nature of the gene.
Components:	The ORF clone is ion-exchange column purified and shipped in a 2D barcoded Matrix tube containing 10ug of transfection-ready, dried plasmid DNA (reconstitute with 100 ul of water).
Reconstitution Method:	<ol style="list-style-type: none">1. Centrifuge at 5,000xg for 5min.2. Carefully open the tube and add 100ul of sterile water to dissolve the DNA.3. Close the tube and incubate for 10 minutes at room temperature.4. Briefly vortex the tube and then do a quick spin (less than 5000xg) to concentrate the liquid at the bottom.5. Store the suspended plasmid at -20°C. The DNA is stable for at least one year from date of shipping when stored at -20°C.
RefSeq:	NM_024042.4
RefSeq Size:	1109 bp
RefSeq ORF:	882 bp
Locus ID:	79006
UniProt ID:	Q9UJH8
Cytogenetics:	16p13.3
Protein Families:	Secreted Protein
Gene Summary:	Meteorin regulates glial cell differentiation and promotes the formation of axonal networks during neurogenesis (Nishino et al., 2004 [PubMed 15085178]).[supplied by OMIM, Mar 2008]