

Product datasheet for **RG200826**

DDA1 (NM_024050) Human Tagged ORF Clone

Product data:

Product Type: Expression Plasmids
Product Name: DDA1 (NM_024050) Human Tagged ORF Clone
Tag: TurboGFP
Symbol: DDA1
Synonyms: C19orf58; PCIA1
Mammalian Cell Selection: Neomycin
Vector: pCMV6-AC-GFP (PS100010)
E. coli Selection: Ampicillin (100 ug/mL)
ORF Nucleotide Sequence: >RG200826 representing NM_024050
 Red=Cloning site Blue=ORF Green=Tags(s)

TTTGTAAATACGACTCACTATAGGGCGGCCGGAATTCGTCGACTGGATCCGGTACCGAGGAGATCTGCC
 GCC**CGATCGC**C

ATGGCAGATTTTTGAAAGGACTGCCTGTCTACAACAAAGCAATTTAGTCGATTTACGCGGACTCCG
 TGTGCAAAGCCTCGAACCGACGGCCCTCAGTCTACCTGCCTACCCGCGAGTACCCGTCTGAACAGATCAT
 CGTGACAGAAAAGACAAACATCCTCTGCGCTACCTGCATCAGCAATGGGACAAAAGAACGCTGCCAAG
 AAGAGAGACCAGGAGCAAGTGGAGCTGGAAGGCGAGAGCTCCGCACCTCCCCGCAAGGTGGCGGGACCG
 ACAGCCCAGACATGCACGAGGACACT

ACGCGTACGCGGCCGCTCGAG - GFP Tag - GTTTAA

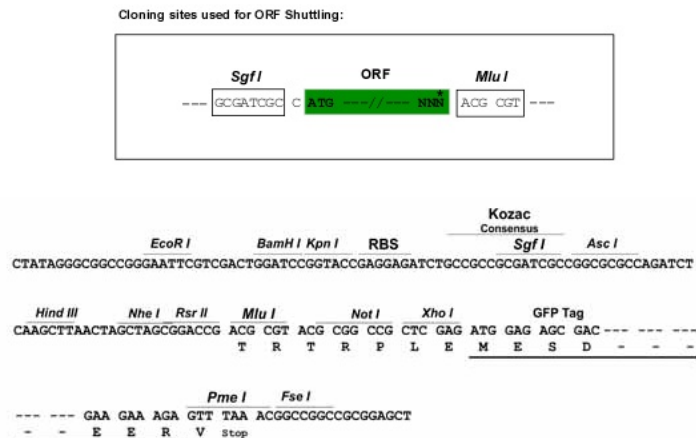
Protein Sequence: >RG200826 representing NM_024050
 Red=Cloning site Green=Tags(s)
 MADFLKGLPVYNKSNFSRFHADSVCKASNRPRSYYLPTREYPSQIIVTEKTNILLRYLHQWQDKKNAAK
 KRDEQVELEGESSAPPRKVARTDSPDMHEDT

TRTRPLE - GFP Tag - V

Restriction Sites: SgfI-MluI



[View online »](#)

Cloning Scheme:


ACCN: NM_024050

ORF Size: 306 bp

OTI Disclaimer: The molecular sequence of this clone aligns with the gene accession number as a point of reference only. However, individual transcript sequences of the same gene can differ through naturally occurring variations (e.g. polymorphisms), each with its own valid existence. This clone is substantially in agreement with the reference, but a complete review of all prevailing variants is recommended prior to use. [More info](#)

OTI Annotation: This clone was engineered to express the complete ORF with an expression tag. Expression varies depending on the nature of the gene.

Components: The ORF clone is ion-exchange column purified and shipped in a 2D barcoded Matrix tube containing 10ug of transfection-ready, dried plasmid DNA (reconstitute with 100 ul of water).

Reconstitution Method:

1. Centrifuge at 5,000xg for 5min.
2. Carefully open the tube and add 100ul of sterile water to dissolve the DNA.
3. Close the tube and incubate for 10 minutes at room temperature.
4. Briefly vortex the tube and then do a quick spin (less than 5000xg) to concentrate the liquid at the bottom.
5. Store the suspended plasmid at -20°C. The DNA is stable for at least one year from date of shipping when stored at -20°C.

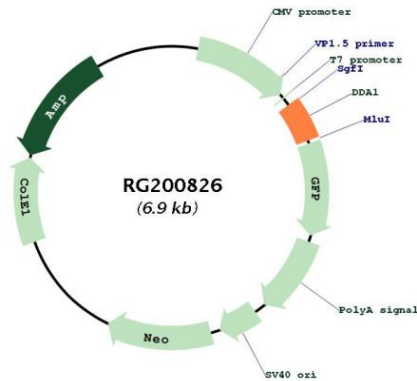
RefSeq: [NM_024050.6](#)

RefSeq Size: 1086 bp

RefSeq ORF: 309 bp

Locus ID:	79016
UniProt ID:	Q9BW61
Cytogenetics:	19p13.11
Gene Summary:	May be involved in ubiquitination and subsequent proteasomal degradation of target proteins. Component of the DDD-E2 complexes which may provide a platform for interaction with CUL4A and WD repeat proteins.[UniProtKB/Swiss-Prot Function]

Product images:



Circular map for RG200826