

## Product datasheet for **RG200825**

### DDRGK1 (NM\_023935) Human Tagged ORF Clone

#### Product data:

Product Type:	Expression Plasmids
Product Name:	DDRGK1 (NM_023935) Human Tagged ORF Clone
Tag:	TurboGFP
Symbol:	DDRGK1
Synonyms:	C20orf116; dj1187M17.3; SEMDSH; UFBP1
Mammalian Cell Selection:	Neomycin
Vector:	pCMV6-AC-GFP (PS100010)
E. coli Selection:	Ampicillin (100 ug/mL)
ORF Nucleotide Sequence:	>RG200825 representing NM_023935 Red=Cloning site Blue=ORF Green=Tags(s)

TTTTGTATACGACTCACTATAGGGCGGCCGGAATTCGTCGACTGGATCCGGTACCGAGGAGATCTGCC  
 GCC**CGATCGCC**

ATGGTGGCGCCTGTGTGGTACTTGGTAGCGGGGCTCTGCTAGTCGGCTTTATCCTCTTCCTGACTCGCA  
 GCCGGGGCCGGCGGCATCAGCCGGCCAAGAGCCACTGCACAATGAGGAGCTGGCAGGAGCAGGCCGGGT  
 GGCCAGCCTGGGCCCTGGAGCCTGAGGAGCCGAGAGCTGGAGGCAGGCCTCGGCGCCGAGGGACCTG  
 GGCAGCCGCTACAGGCCAGCGTCGAGCCAGCGGGTGGCTGGGCAGAAGCAGATGAGAACGAGGAGG  
 AAGCTGTCATCCTAGCCCAGGAGGAGGAAGGTGTCGAGAAGCCAGCGGAACTCACCTGTCGGGGAAAAT  
 TGGAGCTAAGAACTGCGGAAGCTGGAGGAGAAACAAGCGCGAAAGGCCAGCGTGAGGCAGAGGAGGCT  
 GAACGTGAGGAGCGGAAACGACTCGAGTCCCAGCGCAAGCTGAGTGGAAGAAGGAGGAGGAGCGGCTTC  
 GCCTGGAGGAGGAGCAGAAGGAGGAGGAGGAGGAAGGCCCGCAGGAGCAGGCCAGCGGGAGCATGA  
 GGAGTACCTGAACTGAAGGAGGCCTTTGTGGTGGAGGAGGAAGGCGTAGGAGAGACCATGACTGAGGAA  
 CAGTCCCAGAGCTTCTGACAGAGTTCATCAACTACATCAAGCAGTCCAAGGTTGTGCTCTTGAAGACC  
 TGGCTTCCAGGTGGGCCTACGCACTCAGGACACCATAAATCGCATCCAGGACCTGCTGGCTGAGGGGAC  
 TATAACAGGTGTGATTGACGACCGGGGCAAGTTCATCTACATAACCCAGAGGAACTGGCCGCCGTGGCC  
 AACTTCATCCGACAGCGGGGCCGGGTGTCCATCGCCGAGCTTGCCCAAGCCAGCAACTCCCTCATCGCCT  
 GGGGCCGGGAGTCCCCTGCCCAAGCCCCAGCC

**ACGCGT**ACGCGGCCGCTCGAG - GFP Tag - GTTTAA


[View online »](#)

**Protein Sequence:** >RG200825 representing NM\_023935  
 Red=Cloning site Green=Tags(s)

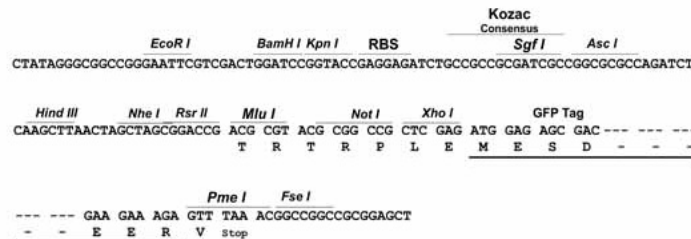
MVAPVWYLVAALLVGFILFLTRSRGRAASAGQEPLHNEELAGAGRVAQPGPLEPEEPRAAGRP RRRLDL  
 GSRLQAQRRAQRVAWAEADENEEEAIVLAQEEEGVEKPAETHLSGKIGAKKLRKLEEKQARKAQREAEAA  
 EREERKRLESQREAEWKKEEERLRLEEEQKEEEERKAREEQAREHEEYLLKEAFVVEEGVGETMTEE  
 QSQSFLTEFINYIKQSKVVLLEDLASQVGLRTQDTINRIQDLLAEGTITGVIDDRGKFIYITPEELAAVA  
 NFIRQGRVYSIAELAQASNSLIWGRESPAQAPA

TRTRPLE – GFP Tag – V

**Restriction Sites:** SgfI-MluI

**Cloning Scheme:**

Cloning sites used for ORF Shuttling:



**ACCN:** NM\_023935

**ORF Size:** 942 bp

**OTI Disclaimer:** The molecular sequence of this clone aligns with the gene accession number as a point of reference only. However, individual transcript sequences of the same gene can differ through naturally occurring variations (e.g. polymorphisms), each with its own valid existence. This clone is substantially in agreement with the reference, but a complete review of all prevailing variants is recommended prior to use. [More info](#)

**OTI Annotation:** This clone was engineered to express the complete ORF with an expression tag. Expression varies depending on the nature of the gene.

**Components:** The ORF clone is ion-exchange column purified and shipped in a 2D barcoded Matrix tube containing 10ug of transfection-ready, dried plasmid DNA (reconstitute with 100 ul of water).

**Reconstitution Method:**

1. Centrifuge at 5,000xg for 5min.
2. Carefully open the tube and add 100ul of sterile water to dissolve the DNA.
3. Close the tube and incubate for 10 minutes at room temperature.
4. Briefly vortex the tube and then do a quick spin (less than 5000xg) to concentrate the liquid at the bottom.
5. Store the suspended plasmid at -20°C. The DNA is stable for at least one year from date of shipping when stored at -20°C.

**Note:** Plasmids are not sterile. For experiments where strict sterility is required, filtration with 0.22um filter is required.

**RefSeq:** [NM\\_023935.3](#)

**RefSeq Size:** 1298 bp

**RefSeq ORF:** 945 bp

**Locus ID:** 65992

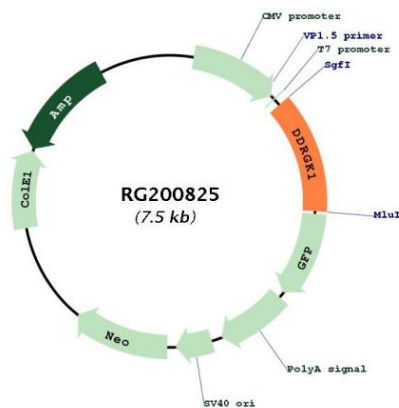
**UniProt ID:** [Q96HY6](#)

**Cytogenetics:** 20p13

**Protein Families:** Secreted Protein, Transmembrane

**Gene Summary:** The protein encoded by this gene interacts with components of the ubiquitin fold modifier 1 conjugation pathway and helps prevent apoptosis in ER-stressed secretory tissues. In addition, the encoded protein regulates nuclear factor- $\kappa$ B activity. [provided by RefSeq, Dec 2015]

## Product images:



Circular map for RG200825