

Product datasheet for **RG200812**

Cyclin B1 (CCNB1) (NM_031966) Human Tagged ORF Clone

Product data:

Product Type:	Expression Plasmids
Product Name:	Cyclin B1 (CCNB1) (NM_031966) Human Tagged ORF Clone
Tag:	TurboGFP
Symbol:	Cyclin B1
Synonyms:	CCNB
Mammalian Cell Selection:	Neomycin
Vector:	pCMV6-AC-GFP (PS100010)
E. coli Selection:	Ampicillin (100 ug/mL)
ORF Nucleotide Sequence:	>RG200812 representing NM_031966 Red=Cloning site Blue=ORF Green=Tags(s)

TTTTGTAATACGACTCACTATAGGGCGGCCGGAATTCGTCGACTGGATCCGGTACCGAGGAGATCTGCC
GCC**CGATCGCC**

ATGGCGCTCCGAGTCACCAGGAACCTCGAAAATTAATGCTGAAAAAAGGCGAAGATCAACATGGCAGGCG
CAAAGCGCGTTCCTACGGCCCTGCTGCAACCTCCAAGCCGGACTGAGGCAAGAACAGCTCTTGGGGA
CATTGGTAACAAAGTCAGTGAACAACCTGCAGGCCAAAAAGCCTATGAAGAAGGAAGCAAAACCTTCAGT
ACTGAAAAAGTCATTGATAAAAACTACAAAACCTCTTGAAAAGGTACCTATGCTGGTGCCAGTGCCAG
TGCTGAGCCAGTGCCAGAGCCAGAACCTGAGCCAGAACCTGAGCCTGTTAAAGAAGAAAACTTTCGCC
TGAGCCTATTTTGGTTGATACTGCCTCTCCAAGCCAATGGAAACATCTGGATGTCCCTCGAGAAGAA
GACCTGTGTCCAGGCTTCTCTGATGTAATCTTGCAAGTAATGATGTGGATGCAGAAGATGGAGCTGATC
CAAACCTTTGTAGTGAATATGTGAAAGATATTTATGCTTATCTGAGACAACCTTGAGGAAGAGCAAGCAGT
CAGACCAAAATACCTACTGGGTCGGGAAGTCACTGGAAACATGAGAGCCATCCTAATTGACTGGCTAGTA
CAGGTTCAAATGAAATTCAGGTTGTTGCAGGAGACCATGTACATGACTGTCTCCATTATTGATCGGTTCA
TGCAGAATAATGTGTGCCAAGAAGATGCTGCAGCTGGTTGGTGTCACTGCCATGTTTATTGCAAGCAA
ATATGAAGAAATGTACCCTCCAGAAATTTGGTACTTTGCTTTTGTGACTGACAACACTTATACTAAGCAC
CAAATCAGACAGATGAAAATGAAGATTCTAAGAGCTTTAAACTTTGGTCTGGGTCGGCCTACCTTTGC
ACTTCTTCGGAGAGCATCTAAGATTGGAGAGGTTGATGTCGAGCAACATACTTTGGCCAAATACCTGAT
GAACTAACTATGTTGGACTATGACATGGTGCACCTTCTCCTTCTCAAATTGCAGCAGGAGCTTTTTGC
TTAGCACTGAAAATCTGGATAATGGTGAATGGACACCAACTCTACAACATTACCTGTCATATACTGAAG
AATCTCTTCTCCAGTTATGCAGCACCTGGCTAAGAATGTAGTCATGGTAAATCAAGGACTTACAAGCA
CATGACTGTCAAGAACAAGTATGCCACATCGAAGCATGCTAAGATCAGCACTCTACCACAGCTGAATTCT
GCACTAGTTCAAGATTTAGCCAAGGCTGTGGCAAAGTG

ACGCGTACGCGGCCGCTCGAG - GFP Tag - GTTTAA



[View online »](#)

Protein Sequence: >RG200812 representing NM_031966
Red=Cloning site Green=Tags(s)

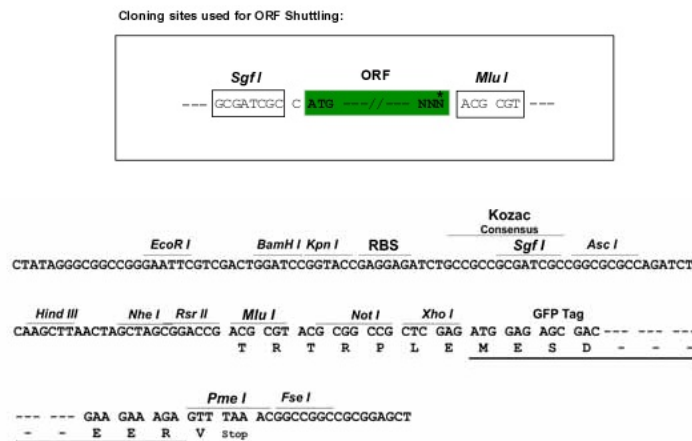
MALRVTRNSKINAENKAKINMAGAKRVPTAPAATSKPGLRPRALGDIGNKVSEQLQAKMPMKKEAKPSA
 TGKVIDKKLPKPLEKVPMLVPVPVSEPVPEPEPEPEPEPVKEEKLSEPEILVDTASPSMETSGCAPAEE
 DLCQAFSDVILAVNDVDAEDGADPNLCSEYVKDIYAYLRQLEEEQAVRPKYLLGREVTGNMRAILIDWL
 VQVQMKFRLLQETMYMTVSIIDRFMQNNCPVKMMLQLVGVAMFIASKYEEMYPPEIGDFAFVTDNTYTKH
 QIRQMEMKILRALNFGLGRPLPLHFLRRASKIGEVDVEQHTLAKYLMELTMDYDMVHFPPSQIAAGAF
 C LALKILDNGEWPTLQHYLSYTEESLLPVMQHLAKNVVMVQGLTKHMTVKNKYATSKHAKISTLPQLNS
 ALVQDLAKAVAKV

TRTRPLE - GFP Tag - V

Chromatograms: https://cdn.origene.com/chromatograms/ja2653_g08.zip

Restriction Sites: SgfI-MluI

Cloning Scheme:



ACCN: NM_031966

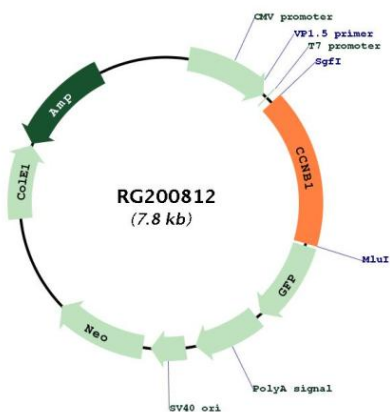
ORF Size: 1299 bp

OTI Disclaimer: Due to the inherent nature of this plasmid, standard methods to replicate additional amounts of DNA in E. coli are highly likely to result in mutations and/or rearrangements. Therefore, OriGene does not guarantee the capability to replicate this plasmid DNA. Additional amounts of DNA can be purchased from OriGene with batch-specific, full-sequence verification at a reduced cost. Please contact our customer care team at custsupport@origene.com or by calling 301.340.3188 option 3 for pricing and delivery.

The molecular sequence of this clone aligns with the gene accession number as a point of reference only. However, individual transcript sequences of the same gene can differ through naturally occurring variations (e.g. polymorphisms), each with its own valid existence. This clone is substantially in agreement with the reference, but a complete review of all prevailing variants is recommended prior to use. [More info](#)

OTI Annotation:	This clone was engineered to express the complete ORF with an expression tag. Expression varies depending on the nature of the gene.
Components:	The ORF clone is ion-exchange column purified and shipped in a 2D barcoded Matrix tube containing 10ug of transfection-ready, dried plasmid DNA (reconstitute with 100 ul of water).
Reconstitution Method:	<ol style="list-style-type: none">1. Centrifuge at 5,000xg for 5min.2. Carefully open the tube and add 100ul of sterile water to dissolve the DNA.3. Close the tube and incubate for 10 minutes at room temperature.4. Briefly vortex the tube and then do a quick spin (less than 5000xg) to concentrate the liquid at the bottom.5. Store the suspended plasmid at -20°C. The DNA is stable for at least one year from date of shipping when stored at -20°C.
RefSeq:	NM_031966.4
RefSeq Size:	2177 bp
RefSeq ORF:	1302 bp
Locus ID:	891
UniProt ID:	P14635
Cytogenetics:	5q13.2
Domains:	cyclin_C, CYCLIN, cyclin
Protein Families:	Druggable Genome, Stem cell - Pluripotency
Protein Pathways:	Cell cycle, Oocyte meiosis, p53 signaling pathway, Progesterone-mediated oocyte maturation
Gene Summary:	The protein encoded by this gene is a regulatory protein involved in mitosis. The gene product complexes with p34(cdc2) to form the maturation-promoting factor (MPF). The encoded protein is necessary for proper control of the G2/M transition phase of the cell cycle. [provided by RefSeq, Aug 2017]

Product images:



Circular map for RG200812