

## Product datasheet for **RG200804**

### C3orf10 (BRK1) (NM\_018462) Human Tagged ORF Clone

#### Product data:

**Product Type:** Expression Plasmids  
**Product Name:** C3orf10 (BRK1) (NM\_018462) Human Tagged ORF Clone  
**Tag:** TurboGFP  
**Symbol:** C3orf10  
**Synonyms:** C3orf10; hHBrk1; HSPC300; MDS027  
**Mammalian Cell Selection:** Neomycin  
**Vector:** pCMV6-AC-GFP (PS100010)  
**E. coli Selection:** Ampicillin (100 ug/mL)  
**ORF Nucleotide Sequence:** >RG200804 representing NM\_018462  
 Red=Cloning site Blue=ORF Green=Tags(s)

TTTTGTAATACGACTCACTATAGGGCGGCCGGAATTCGTCGACTGGATCCGGTACCGAGGAGATCTGCC  
 GCC**CGATCGCC**

ATGGCGGGACAGGAGGATCCGGTGCAGCGGGAGATTCACCAGGACTGGGCTAACCGGGAGTACATTGAGA  
 TAATCACCAGCAGCATCAAGAAATCGCAGACTTTCTCAACTCGTTCGATATGTCTTGTCTGTTCAAGACT  
 TGCAACACTAAACGAGAAATTGACAGCCCTTGAACGGAGAATAGAGTACATTGAAGCTCGGGTGACAAA  
 GGTGAGACTCACC

**ACGCGT**ACGCGGCCGCTCGAG - GFP Tag - GTTTAA

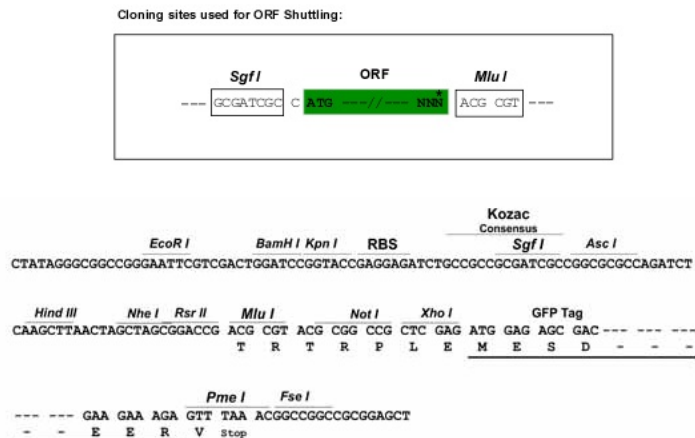
**Protein Sequence:** >RG200804 representing NM\_018462  
 Red=Cloning site Green=Tags(s)  
 MAGQEDPVQREIHQDWANREYIEIITSSIKKIADFLNSFDMSCRSRLATLNEKLTALERRIEYIEARVTK  
 GETLT

**TRTRPLE** - GFP Tag - V

**Restriction Sites:** SgfI-MluI



[View online »](#)

**Cloning Scheme:**


**ACCN:** NM\_018462

**ORF Size:** 225 bp

**OTI Disclaimer:** The molecular sequence of this clone aligns with the gene accession number as a point of reference only. However, individual transcript sequences of the same gene can differ through naturally occurring variations (e.g. polymorphisms), each with its own valid existence. This clone is substantially in agreement with the reference, but a complete review of all prevailing variants is recommended prior to use. [More info](#)

**OTI Annotation:** This clone was engineered to express the complete ORF with an expression tag. Expression varies depending on the nature of the gene.

**Components:** The ORF clone is ion-exchange column purified and shipped in a 2D barcoded Matrix tube containing 10ug of transfection-ready, dried plasmid DNA (reconstitute with 100 ul of water).

**Reconstitution Method:**

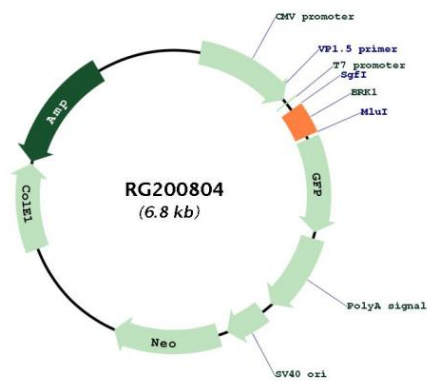
1. Centrifuge at 5,000xg for 5min.
2. Carefully open the tube and add 100ul of sterile water to dissolve the DNA.
3. Close the tube and incubate for 10 minutes at room temperature.
4. Briefly vortex the tube and then do a quick spin (less than 5000xg) to concentrate the liquid at the bottom.
5. Store the suspended plasmid at -20°C. The DNA is stable for at least one year from date of shipping when stored at -20°C.

**RefSeq:** [NM\\_018462.5](#)

**RefSeq Size:** 1197 bp

**RefSeq ORF:** 228 bp  
**Locus ID:** 55845  
**UniProt ID:** [Q8WUW1](#)  
**Cytogenetics:** 3p25.3  
**Protein Pathways:** Regulation of actin cytoskeleton  
**Gene Summary:** Involved in regulation of actin and microtubule organization. Part of a WAVE complex that activates the Arp2/3 complex. As component of the WAVE1 complex, required for BDNF-NTRK2 endocytic trafficking and signaling from early endosomes (By similarity).  
 [UniProtKB/Swiss-Prot Function]

**Product images:**



Circular map for RG200804