

Product datasheet for **RG200798**

CEP68 (NM_015147) Human Tagged ORF Clone

Product data:

Product Type:	Expression Plasmids
Product Name:	CEP68 (NM_015147) Human Tagged ORF Clone
Tag:	TurboGFP
Symbol:	CEP68
Synonyms:	KIAA0582
Mammalian Cell Selection:	Neomycin
Vector:	pCMV6-AC-GFP (PS100010)
E. coli Selection:	Ampicillin (100 ug/mL)



[View online »](#)

ORF Nucleotide Sequence:

>RG200798 representing NM_015147
 Red=Cloning site Blue=ORF Green=Tags(s)

TTTTGTAATACGACTCACTATAGGGCGGCCGGAATTCGTCGACTGGATCCGGTACCGAGGAGATCTGCC
 GCC**GCGATCGCC**

ATGGCCCTGGGTGAAGAAAAGGCAGAAGCGGAAGCATCTGAAGACACAAAGGCCAGTCCTATGGGAGAG
 GGAGCTGCAGGGAGCGGGAGCTGGACATCCCAGGGCCATGAGTGGGAGCAGCCCCACGCCTGGAAGC
 TGAGGGAGGGCTCATCTCCCTGTATGGGGGCGAGAAGGATACCTGCCCTACTTGCTGGATTGGGACT
 GACCCTGGCAGCCCTCTAGAGCCACCAGCCACAGGCCAGTGATGCCAACAGAGAGCCCGTAGCTGAGA
 GGTCTGAGCTGCACTCAGTGGCTGCCTCCTGCCACCATGGGGTCTGGAGACCTTCTGCTCTCCGGGA
 AAGCCAGTGGAGAAGACCAAGCTTTCTCCTCCGAGGAGTTCCTCAGACTCTGAGCCTTCCAGAACA
 ACAACTATTTGCTCAGGACATGATGCTGATACCGAAGATGATCCATCCCTAGCAGATTTGCCCCAGGCAC
 TGGACCTCAGCCAGCAGCCTCACAGCTCAGGTCTCTCTTGCTGTACAGTGAAGTCCGTGCTGAGCCC
 AGGTTCCGAGCTCAGCCTTCCAGCTGCAGCATCTCTGCTTCTCCACGGGCAGCAGTCTCCAGGGTAC
 CAGGAGAGGGCGGAGCCTCGTGGTGGTTCTCTGGCCAAGGTCTCCTCCTCCCTGGAGCCGGTCTGCCCC
 AGGAACCTTCTCTGTGGTGGGGCTAGGACCTCGGCCCAAGTGGTCAACCACAGCCTGTGTTCTCTGGGG
 TGATGTTCTGGGCTAGGCAGGAGACGCCTCTCCTCCAGGCTGAGTACTGGGCCTGTGTGCTGCCAGAT
 TCCCTGCCTCCATCACCCGACCGCCACTCCCCTCTCTGGAACCCAAATAAAGAGTATGAAGATCTGCTTG
 ACTATACTTACCCACTGAGGCCCGGGCCTCAGTCCCAAAGCACCTTGATAGCCGTGTGCCAGCTGACCC
 TGTCTGCAGGACTCCGGGTAGACCTGGATAGCTTCTGTCTCTCCAGCAAGCACCCCTCAAATCACCT
 ACTAATGTCTCCCCAACTGCCACCAGCAGAGGCCACTGCCCTGCCATTTTCTGGGCCAGAGAGCCAA
 GCCTTAAGCAGTGGCCCTCCAGAGTACCCAGAACAGGGTGGCATGGGCTTGGCATCTTGGAGCCAACT
 TGCATCTACCCAGAGCCCGAGCAGTAGGGATGCTCGTTGGGAGCGCAGAGAGCCAGCCCTGAGGGGT
 GCGAAGGACCGGCTGACTATAGGCAAGCACCTTGATATGGGCTCTCCCCAGCTAAGGACACGGGACAGAG
 GGTGGCCCTCGCCAGGCCAGAGAGGGAGAAGAGGACCAGCCAGAGTGCCCGGCGCCCTACTGCACAGA
 GTCTAGGTGGAATCAGAAGAGGAAGTGGAAAGTATGACGAGTATCTTGCCCTCCCCGCTCGGCTGACA
 CAGACATTTTGTGTGCTGAGCTGGAAGAGCTGATCTGCTGGTGTATAATGTTGCAGATGTTACTGACCAG
 GGACTGCAGCCAGGTCCAATCTTACAAGTCTCAAGTCTTCTCTGCAGCTTACCAGCAATTAAGAAAGA
 TATAGATGAACATCAGTCTCTGACGGAGAGTGTCTTACAGAAGGGGGAGATTCTTCTTCAAGTGCCTGTTG
 GAGAACACCCAGTTTTAGAGGATGCTCTGGGAGGATCGAAAGCAGTCTGGTGAAGCTGGAGAGCCAGC
 CAGATCGCTGTATGACTCTATCTTGGCCTCTCTGGACATGCTGGCTGGCTGCACCCCTATCCCTGACAA
 AAGCCCATGGCGCAATGGAGCACCCATGTGAAGGGTT

ACGCGTACGCGGCCGCTCGAG – GFP Tag – GTTTAA

Protein Sequence:

>RG200798 representing NM_015147
 Red=Cloning site Green=Tags(s)

MALGEEKAEAEASEDTKAQSYGRGSCRERELDIPGMSGEQPPRLEAEGGLISPVWGAEGIPAPTCWIGT
 DPGSPSRAHQPPASDANREPVAERSEPALSGLPPATMGSGLLLSGESQVEKTKLSSSEFPQTLSPRT
 TTICSGHADTEDDPSLADLPQALDLQQPHSSGLSCLSQWKSVLSPGSAAPSSCSISASSTGSSLQGH
 QERAEPGGSLAKVSSSLEPVVPQEPSSVVGLGPRPQWSPQPVFSGGDASGLGRRRSLFQAEYWACVLPD
 SLPPSPDRHSPLWNPKEYEDLLDYTYPLRPGQLPKHLDSRVPADPVLQDSGVLDLDSFVSPASTLKSP
 TNVSPNCPAEATALPFSGPREPSLKQWPSRVPQKQGGMGLASWSQLASTPRAPGSRDARWERREPALRG
 AKDRLTIGKHLDMGSPQLRTRDRGWSPRPEREKRTSQSARRPTCTESRWKSEEEVESDDEYLALPARLT
 QTFCCLLEELICWLYNVADVTDHGTAARSNLTSLKSSLQLYRQFKKIDIDEHQLTESVLQKQEILLQCLL
 ENTPVLEDVLRGIAKQSGELESADRLYDSILASLDMLAGCTLIPDKKPMAMEHPCEGV

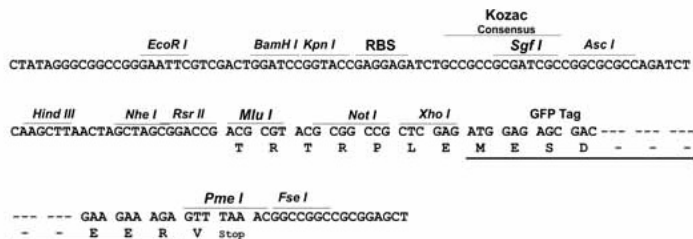
TRTRPLE – GFP Tag – V

Restriction Sites:

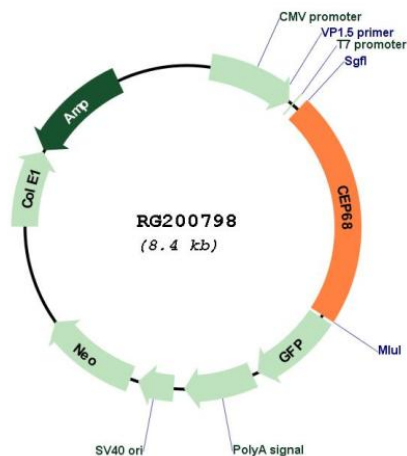
SgfI-MluI

Cloning Scheme:

Cloning sites used for ORF Shutting:



Plasmid Map:



ACCN: NM_015147
 ORF Size: 2271 bp

OTI Disclaimer:	The molecular sequence of this clone aligns with the gene accession number as a point of reference only. However, individual transcript sequences of the same gene can differ through naturally occurring variations (e.g. polymorphisms), each with its own valid existence. This clone is substantially in agreement with the reference, but a complete review of all prevailing variants is recommended prior to use. More info
OTI Annotation:	This clone was engineered to express the complete ORF with an expression tag. Expression varies depending on the nature of the gene.
Components:	The ORF clone is ion-exchange column purified and shipped in a 2D barcoded Matrix tube containing 10ug of transfection-ready, dried plasmid DNA (reconstitute with 100 ul of water).
Reconstitution Method:	<ol style="list-style-type: none">1. Centrifuge at 5,000xg for 5min.2. Carefully open the tube and add 100ul of sterile water to dissolve the DNA.3. Close the tube and incubate for 10 minutes at room temperature.4. Briefly vortex the tube and then do a quick spin (less than 5000xg) to concentrate the liquid at the bottom.5. Store the suspended plasmid at -20°C. The DNA is stable for at least one year from date of shipping when stored at -20°C.
RefSeq:	NM_015147.1 , NP_055962.1
RefSeq Size:	5877 bp
RefSeq ORF:	2274 bp
Locus ID:	23177
UniProt ID:	Q76N32
Cytogenetics:	2p14
Gene Summary:	Involved in maintenance of centrosome cohesion, probably as part of a linker structure which prevents centrosome splitting (PubMed:18042621). Required for localization of CDK5RAP2 to the centrosome during interphase (PubMed:24554434, PubMed:25503564).[UniProtKB/Swiss-Prot Function]