

Product datasheet for **RG200781**

L3MBTL2 (NM_031488) Human Tagged ORF Clone

Product data:

Product Type:	Expression Plasmids
Product Name:	L3MBTL2 (NM_031488) Human Tagged ORF Clone
Tag:	TurboGFP
Symbol:	L3MBTL2
Synonyms:	H-l(3)mbt-l; L3MBT
Mammalian Cell Selection:	Neomycin
Vector:	pCMV6-AC-GFP (PS100010)
E. coli Selection:	Ampicillin (100 ug/mL)



[View online »](#)

ORF Nucleotide
Sequence:

>RG200781 representing NM_031488
Red=Cloning site Blue=ORF Green=Tags(s)

TTTTGTAATACGACTCACTATAGGGCGGCCGGGAATTCGTCGACTGGATCCGGTACCGAGGAGATCTGCC
GCC**CGGATCGCC**

ATGGAGAAGCCCCGGAGTATTGAGGAGACCCCATCTTCAGAACCAATGGAGGAAGAGGAAGATGACGACT
TGGAGCTGTTGGTGGCTATGATAGTTCCGGAGTTATAACAGCAGTGTGGGCAGTGAGAGCAGCTCCTA
TCTGGAGGAGTCAAGTGAAGCAGAAAATGAGGATCGGGAAGCAGGGAACTGCCGACCTCCCCGCTGCAT
TTGCTCAGCCCTGGGACTCCTCGCTCCTGGATGGCAGTGGTTCTGAGCCAGCTGTCTGTGAGATGTGTG
GTATCGTGGGTACAAGGGAAGCCTTCTTCTCCAAGACCAAGAGGTTCTGCAGCGTCTCCTGCTCCAGGAG
CTACTCTCCAACCTCAAGAAAGCCAGTATCTTGGCTAGATTACAGGGAAAACCACCGACCAAAAAAGCC
AAAGTCTGCACAAGGCTGCCTGGTCTGCCAAAATGGAGCCTTCTCCACTCTCAAGGGACAGGACAGC
TGGCAGATGGGACACCAACAGGACAAGACGCTCTGGTCTTGGGCTTCGACTGGGGGAAGTCTCTGAAGGA
TCACAGTTACAAGGCTGCTCCCGTCAGTGTTCAGCACGTCCCACTCTATGACCAGTGGGAGGATGTG
ATGAAAGGGATGAAGGTGGAGGTGCTCAACAGTGTGCTGTGCTCCCGAGCCGGGTGACTGGATCGCCT
CTGTATCCAGACAGCAGGGTATCGGGTGTGCTTCCGGTATGAAGGCTTTGAAAATGACGCCAGCCATGA
CTTCTGGTGCAACCTGGGAACAGTGGATGTCCACCCCATTTGGCTGGTGTGCCATCAACAGCAAGATCCTA
GTGCCCCACGGACCATCCATGCCAAGTTCACCGACTGGAAGGGCTACCTCATGAAACGGCTGGTGGGCT
CCAGGACGCTTCCCGTGGATTTCCACATCAAGATGGTGGAGAGCATGAAGTACCCCTTTAGGCAGGGCAT
GCGGCTGGAAGTGGTGGACAAGTCCCAGGTGTACGCACTCGCATGGCTGTGGTGGACACAGTAACTGGG
GGTCCCTACGGCTCCTCTACGAGGATGGTACAGTACGACGACTTCTGGTCCACATGTGGAGCCCCC
TGATCCACCCAGTGGTGGTCAAGGCTGTGGCCACGGCATCAAGATGTCAGAGAGGGCAAGTACAT
GGCCCATCACCCACCTTCCGGAAGATCTACTGTGATGCCGTTCCCTTACCTCTTCAAGAAGGTACGAGCA
GTCTACACAGAAGGCGGTTGGTTTGAGGAAGGGATGAAGCTGGAGGCCATTGACCCCTGAATCTGGGCA
ACATCTGCGTGGCAACTGTCTGTAAGGTTCTCCTGGATGGATACCTGATGATCTGTGTGGACGGGGGCC
CTCCACAGATGGCTTGGACTGGTCTGCTACCATGCCTTCCCACGCCATCTTCCCGGCCACCTTCTGT
CAGAAGAATGACATTGAGCTCACACCGCCAAAAGGTTATGAGGCACAGACTTTCAACTGGGAGAATACT
TGGAGAAGACCAAGTCGAAAGCCGCTCCATCGAGACTTTAACATGGATTGCCCAAACCATGGCTTCAA
GGTGGGCATGAAGCTGGAGGCCGTGGACCTGATGGAGCCCCGGCTCATCTGTGTGGCCACGGTGAACGA
GTGGTGCATCGGCTCCTCAGCATCCACTTTGACGGCTGGGACAGCGAGTACGACCAGTGGGTGGACTGCG
AGTCCCCAGACATCTACCCCGTCGGCTGGTGTGAGCTCACCGGCTACCAGCTCCAGCCTCCTGTGGCCGC
AGAACCGCCACACCGCTGAAGGCCAAAGAGGCCACAAAGAAGAAAAAGAAACAGTTTGGGAAGAAAAGG
AAAAGAATCCCGCCCACTAAGACGCGACCCCTCAGACAGGGGTCCAAGAAGCCCTGCTGGAGGACGACC
CTCAGGGTGCCAGGAAGATCTCGTCCGAGCCTGTTCTGGCGAGATCATTGCTGTGCGTGTGAAGGAAGA
GCATCTAGACGTGGCCTCGCCCGACAAGGCTTCAAGTCCAGAGCTGCCTGTCTCCGTCGAGAACATCAAG
CAGGAAACAGACGAC

ACGCGTACGCGGCCGCTCGAG - GFP Tag - GTTTAA

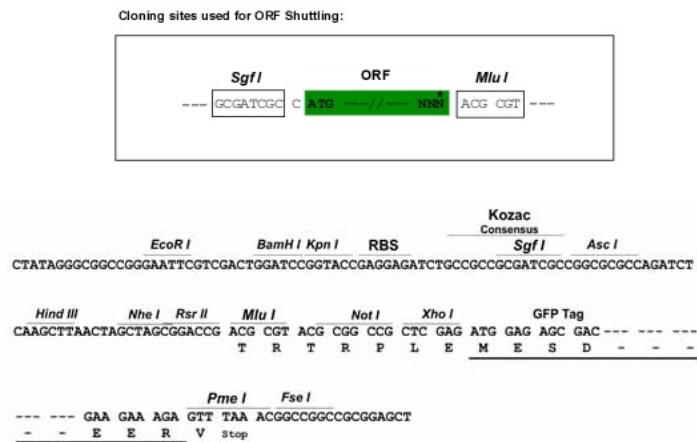
Protein Sequence: >RG200781 representing NM_031488
Red=Cloning site Green=Tags(s)

```
MEKPRSEIETPSSEPMEEEEEDDLELFGGYDSFRSYNSSVGSSESSYLEESSEAEENEDREAGELPTSPLH
LLSPGTPRSLDGGSGSEPAVCEMCGIVGTREAFFSKTKRFCSVSCSRYSNSKASILARLQGPPTKKA
KVLHKAAWSAKIGAFHLSQGTGQLADGPTGQDALVLGFDWGFKLDHSYKAAPVSCFKHVPLYDQWEDV
MKGGMKVEVLNSDAVLP SRVYWIASVIQTAGYRVLLRYEGFENDASHDFWCNLTVDVHPIGWCAINSKIL
VPPRTIHAKFTDWKGYLMKRLVGSRTL PVDFHIK MVESMKYPFRQGMRLVVDKSQVSRTRMAVVDTVIG
GRLRLLYEDGSDDDFWCHMWSPLIHPVGSRRVGHGIKMSERRSDMAHHPTFRKIYCDAVPYL FKKVRA
VYTEGGWFEEGMKLEAIDPLNLGNICVATVCKVLLDGYLMI CVDGGPSTDGLDWFCYHASSHAIFPATFC
QKNDIELTPPKGYEAQTFN WENYLEKTKSKAAP SRLFNMDCPNHGFKVGMKLEAVDLMEPRLICVATVKR
VVHRLLSIHFDGWDSEYDQWVDCESPD IYPVWGCEL TGYQLQPPVAAEPATPLKAKEATKKKKKQFGKKR
KRIPPTKTRPLRQGSKKPLEDDPQGARKISSEPVPGEIIAVRVKEEHLDVASPKASSPEL PVSVENIK
QETDD
```

TRTRPLE - GFP Tag - V

Restriction Sites: SgfI-MluI

Cloning Scheme:



ACCN: NM_031488

ORF Size: 2115 bp

OTI Disclaimer: The molecular sequence of this clone aligns with the gene accession number as a point of reference only. However, individual transcript sequences of the same gene can differ through naturally occurring variations (e.g. polymorphisms), each with its own valid existence. This clone is substantially in agreement with the reference, but a complete review of all prevailing variants is recommended prior to use. [More info](#)

OTI Annotation: This clone was engineered to express the complete ORF with an expression tag. Expression varies depending on the nature of the gene.

Components: The ORF clone is ion-exchange column purified and shipped in a 2D barcoded Matrix tube containing 10ug of transfection-ready, dried plasmid DNA (reconstitute with 100 ul of water).

Reconstitution Method:

1. Centrifuge at 5,000xg for 5min.
2. Carefully open the tube and add 100ul of sterile water to dissolve the DNA.
3. Close the tube and incubate for 10 minutes at room temperature.
4. Briefly vortex the tube and then do a quick spin (less than 5000xg) to concentrate the liquid at the bottom.
5. Store the suspended plasmid at -20°C. The DNA is stable for at least one year from date of shipping when stored at -20°C.

RefSeq: [NM_031488.3](#)

RefSeq Size: 3205 bp

RefSeq ORF: 2118 bp

Locus ID: 83746

UniProt ID: [Q969R5](#)

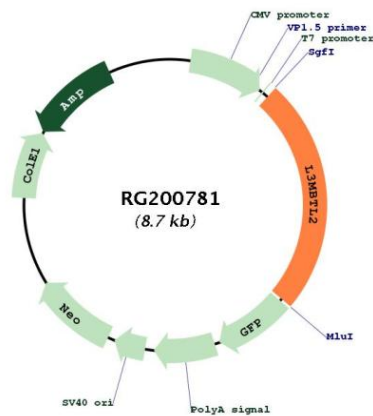
Cytogenetics: 22q13.2

Domains: MBT

Protein Families: Transcription Factors

Gene Summary: Putative Polycomb group (PcG) protein. PcG proteins maintain the transcriptionally repressive state of genes, probably via a modification of chromatin, rendering it heritably changed in its expressibility. Its association with a chromatin-remodeling complex suggests that it may contribute to prevent expression of genes that trigger the cell into mitosis. Binds to monomethylated and dimethylated 'Lys-20' on histone H4. Binds histone H3 peptides that are monomethylated or dimethylated on 'Lys-4', 'Lys-9' or 'Lys-27'. [UniProtKB/Swiss-Prot Function]

Product images:



Circular map for RG200781