

Product datasheet for **RG200764**

ELAC2 (NM_018127) Human Tagged ORF Clone

Product data:

Product Type:	Expression Plasmids
Product Name:	ELAC2 (NM_018127) Human Tagged ORF Clone
Tag:	TurboGFP
Symbol:	ELAC2
Synonyms:	COXPD17; ELC2; HPC2
Mammalian Cell Selection:	Neomycin
Vector:	pCMV6-AC-GFP (PS100010)
E. coli Selection:	Ampicillin (100 ug/mL)



[View online »](#)

ORF Nucleotide Sequence:

>RG200764 representing NM_018127
 Red=Cloning site Blue=ORF Green=Tags(s)

TTTTGTAATACGACTCACTATAGGGCGGCCGGGAATTCGTCGACTGGATCCGGTACCGAGGAGATCTGCC
 GCC**CGGATCGCC**

ATGTGGGCGCTTTGCTCGCTGCTGCGGTCCGCGCGCCGACGCACCATGTCGCAGGGACGCACCATATCGC
 AGGCACCCGCCCGCCGAGCGGCCGCGCAAGGACCCGCTGCGGCACCTGCGCACGCGAGAGAAGCGCGG
 ACCGTCGGGGTGCTCCGGCGGCCAAACACCGTGTACCTGCAGGTGGTGGCAGCGGGTAGCCGGGACTCG
 GGCGCCGCGCTCTACGTCTTCTCCGAGTTCAACCGGTATCTCTTCAACTGTGGAGAAGCGTTTCAGAGAC
 TCATGCAGGAGCACAAGTTAAAGTTGCTCGCTGGACAACATATTCCTGACACGAATGCACTGGTCTAA
 TGTTGGGGGCTTAAAGTGAATGATTCTTACTTTAAAGGAAACCGGGCTTCCAAAGTGTGACTTTCTGGA
 CCTCCACAACCTGGAAAAATACCTCGAAGCAATCAAAAATTTTTCTGGTCCATTGAAAGGAATAGAAGTGG
 CTGTGCGGCCCCACTCTGCCCGAATACGAGGATGAAACCATGACAGTTTACCAGATCCCATAACACAG
 TGAACAGAGGAGGGGAAAGCACCAACCATGGCAGAGTCCAGAAAGCCTCTCAGCAGGCTCAGTCCAGAG
 CGATCTTCAGACTCCGAGTTGAATGAAAATGAGCCACACCTTCCACATGGTGTAGCCAGAGAAGAGGGG
 TCAGGGACTCTTCCCTGGTCGTAGCTTTTCATCTGTAAGCTTCACTTAAAGAGAGGAAACTTCTTGGTGTCT
 CAAAGCAAAGGAGATGGGCTCCAGTTGGGACAGCTGCCATCGTCCCATTGCTGTGCTCAAGGAC
 GGGAAAAGCATCACTCATGAAGGAAGAGAGATTTGGTGAAGAGCTGTGTACTCCTCCAGATCCTGGTG
 CTGCTTTTGTGGTGGTAGAATGTCCAGATGAAAGCTTCACTTCAACCCATCTGTGAGAATGCCACCTTTCA
 GAGGTACCAAGGAAAGGCAGATGCCCCGTGGCCTTGGTGGTTCACATGGCCCCAGCATCTGTGCTTGTG
 GACAGCAGGTACCAGCAGTGGATGGAGAGGTTGGGCTGACACCCAGCACTTGGTCTGAATGAGAAGTCTT
 CAGTTCAGTTCACAACCTTCGACGCCAAGATTCAAACCCAGCTCAACCTCATCCACCCGGACATCTT
 CCCCTGCTCACCAAGTTCCGCTGTAAGAAGGAGGGCCCCACCCTCAGTGTGCCATGGTTCAGGTGAA
 TGCCCTCTCAAGTACCAGCTCCGTCAGGAGGGAGTGGCAGAGGGATGCCATTACTTGAATCCTG
 AGGAATTCATAGTTGAGGCGCTGCAGCTTCCAACTTCCAGCAGAGCGTGCAGGAGTACAGGAGGAGTGC
 GCAGGACGGCCAGCCCCAGCAGAGAAAAGAGTCACTACCCAGAAATCATCTTCTTGGAAACAGGGTCT
 GCCATCCCGATGAAGATTCGAAATGTCACTGCCACACTTGTCAACATAAGCCCCGACAGCTCTGCTAC
 TGGACTGTGGTGAAGGACGTTTGGGACGCTGTGCCGTCATTACGGAGACCAGGTGGACAGGGTCTGGG
 CACCCTGGCTGTGTGTTTGTGTCCACCTGCACGCAGATCACACACGGGCTTGCCAAGTATCTTGTG
 CAGAGAGAACCGCCTTGGCATCTTTGGGAAAGCCGCTTACCCTTTGCTGGTGGTTGCCCCCAACCAGC
 TCAAAGCCTGGTCCAGCAGTACCACAACCAAGTGCAGGAGGTCCCTGCACCACATCAGTATGATTCTCTGC
 CAAATGCCTTCAGGAAGGGGCTGAGATCTCCAGTCCCTGCAGTGGAAAGATTGATCAGTTCGCTGTTGCGA
 ACATGTGATTTGGAAGAGTTTCAGACCTGTCTGGTGCAGGACTGCAAGCATGCGTTTGGCTGTGCGCTGG
 TGCACACCTCTGGCTGGAAAGTGGTCTATTCCGGGGACACCATGCCCTGCGAGGCTCTGGTCCGGATGGG
 GAAAGATGCCACCCTCTGATACATGAAGCCACCTGGAAGATGGTTTGGAAAGGAAAGCAGTGGAAAAG
 ACACACAGCACAACGTCCAAGCCATCAGCGTGGGGATGCGGATGAACCGGGAGTTTCAATGCTGAACC
 ACTTCAGCCAGCGCTATGCCAAGTCCCCTCTCAGCCCCAACTTCAGCGAGAAAGTGGGAGTTGCCTT
 TGACCACATGAAGTCTGCTTTGGAGACTTTCCAACAATGCCAAAGCTGATTCGCCCACTGAAAGCCCTG
 TTTGCTGGCGACATCGAGGAGATGGAGGAGCGCAGGGGAGAAGCGGGAGCTGCGGCAGGTGCGGGCGGCC
 TCTGTCCAGGGAGCTGGCAGGCGCCTGGAGGATGGGGAGCCTCAGCAGAAGCGGGCCACACAGAGGA
 GCCACAGGCCAAGAAGTTCAGAGCCAG

ACCGTACGCGGCCGCTCGAG - GFP Tag - GTTTAA

Protein Sequence: >RG200764 representing NM_018127
 Red=Cloning site Green=Tags(s)

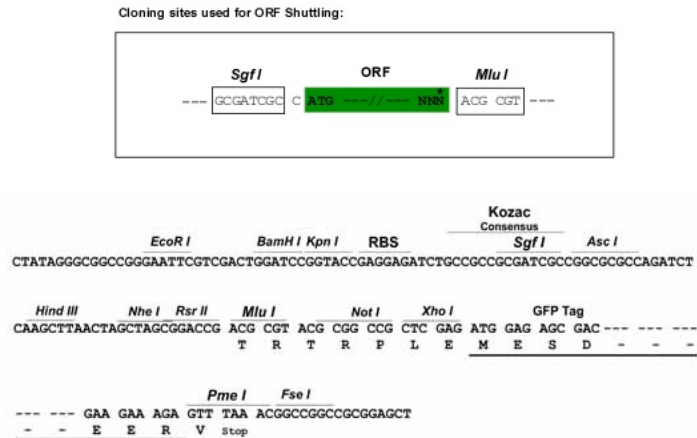
```

MWALCSLLRSAAGRTMSQGRTISQAPARRERPRKDPLRHLRTREKRGPSGCSGGPNTVYLQVVAAGSRDS
GAALYVFSEFNRYLFNCGEGVQRLMQEHKLVARLDNIFLTRMHWSNVGGLSGMILTLKETGLPKCVLSG
PPQLEKYLEAIKIFSGPLKGIELAVRPHSAPEYEDETMVYQIPIHSEQRRGKHQPWQSPERPLSRLSPE
RSSDSELNENEPHLPHGVSQRRGVRDSSLVVAFICKLHLKRGNFVLKAKEMGLPVGTAAIPIIAAVKD
GKSITHEGREILAEELCTPPDGAFAFVVVECPDESFIQPICENATFQRYQKADAPVALVVHMAPASVLV
DSRYQQWMERFGPDTQHLVLNENCASVHNLRSHKIQTQLNLIHPDIFPLLT SFRCKKEGPTLSVPMVQGE
CLLKYQLRPREWQRDAIITCNPEEFIVEALQLPNFQQSVQEYRRSAQDGPAPAEKRSQYPEIIFLGTGS
AIPMKIRNVSATLVNISPDTSLLLDCGEGTFGQLCRHYGDQVDRVLGTLAAVFSHLHADHHTGLPSILL
QRERALASLGKPLHPLL VVAPNQLKAWLQQYHNQCQEVLHHISMIPAKCLQEGAEISSPAVERLISLLR
TCDLEEFQTCLVRHCKHAFGCALVHTSGWKVVYSGDTPCEALVRMGKDATLLIHEATLEDGLEEEEAVEK
THSTTSQAISVGMRMNAEFIMLNHFSQRYAKVPLFSPNFSEKVGVAFDHMKVCFGDFPTMPKLIPLKAL
FAGDIEEMEERREKRELQVRAALLSRELAGGLEDGEPQQKRAHTEEPQAKKVRAQ
  
```

TRTRPLE - GFP Tag - V

Restriction Sites: Sgfl-Mlul

Cloning Scheme:



ACCN: NM_018127

ORF Size: 2478 bp

OTI Disclaimer: The molecular sequence of this clone aligns with the gene accession number as a point of reference only. However, individual transcript sequences of the same gene can differ through naturally occurring variations (e.g. polymorphisms), each with its own valid existence. This clone is substantially in agreement with the reference, but a complete review of all prevailing variants is recommended prior to use. [More info](#)

OTI Annotation: This clone was engineered to express the complete ORF with an expression tag. Expression varies depending on the nature of the gene.

Components: The ORF clone is ion-exchange column purified and shipped in a 2D barcoded Matrix tube containing 10ug of transfection-ready, dried plasmid DNA (reconstitute with 100 ul of water).

Reconstitution Method:

1. Centrifuge at 5,000xg for 5min.
2. Carefully open the tube and add 100ul of sterile water to dissolve the DNA.
3. Close the tube and incubate for 10 minutes at room temperature.
4. Briefly vortex the tube and then do a quick spin (less than 5000xg) to concentrate the liquid at the bottom.
5. Store the suspended plasmid at -20°C. The DNA is stable for at least one year from date of shipping when stored at -20°C.

RefSeq: [NM_018127.4](#), [NP_060597.3](#)

RefSeq Size: 2997 bp

RefSeq ORF: 2481 bp

Locus ID: 60528

UniProt ID: [Q9BQ52](#)

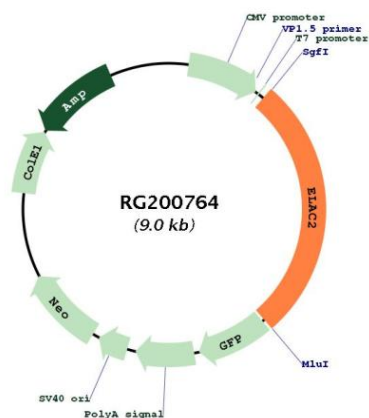
Cytogenetics: 17p12

Domains: lactamase_B

Protein Families: Druggable Genome, Stem cell - Pluripotency

Gene Summary: The protein encoded by this gene has a C-terminal domain with tRNA 3' trailer processing endoribonuclease activity, which catalyzes the removal of the 3' trailer from precursor tRNAs. The protein also interacts with activated Smad family member 2 (Smad2) and its nuclear partner forkhead box H1 (also known as FAST-1), and reduced expression can suppress transforming growth factor-beta induced growth arrest. Mutations in this gene result in an increased risk of prostate cancer. Multiple transcript variants encoding different isoforms have been found for this gene. [provided by RefSeq, Sep 2009]

Product images:



Circular map for RG200764