

Product datasheet for **RG200756**

RNPEP (NM_020216) Human Tagged ORF Clone

Product data:

Product Type:	Expression Plasmids
Product Name:	RNPEP (NM_020216) Human Tagged ORF Clone
Tag:	TurboGFP
Symbol:	RNPEP
Synonyms:	AP-B; APB
Mammalian Cell Selection:	Neomycin
Vector:	pCMV6-AC-GFP (PS100010)
E. coli Selection:	Ampicillin (100 ug/mL)



[View online »](#)

ORF Nucleotide Sequence:

>RG200756 representing NM_020216
 Red=Cloning site Blue=ORF Green=Tags(s)

TTTTGTAATACGACTCACTATAGGGCGGCCGGGAATTCGTCGACTGGATCCGGTACCGAGGAGATCTGCC
 GCC**CGGATCGCC**

ATGGCGAGCGCGAGCATTCCCCCGCAGCGCGCGGCCGGCGCGCCGCTGCACTCCGCGCAGGCTGTGG
 ACGTGGCCTCGGCTCCAACCTCCGGGCCCTTGTAGCTGCTGCACTTGCACCTGGACCTGCGGGCTGAGTT
 CGGGCCTCCAGGCCCCGGCGCAGGGAGCCGGGGCTGAGCGGCACCGCGTCTGGACCTGCGCTGCTG
 GAGCCCGAGGGCGCCGCGAGCTGCGGCTGGACTCGCACCCGTGCTGGAGGTGACGCGCGCGGCTGCG
 GGCGGGAGCGGCCGGCTCGGAGGAGCCGCTGCGGAGCCGTGAGCTTCTACACGCAGCCCTTCTCGCA
 CTATGGCCAGGCCCTGTGCGTGTCTTCCCGCAGCCCTGCCGCGCGCCGAGCGCCTCCAGGTGTGCTC
 ACCTACCGCGTGGGGAGGGACCCGGGTTTGTGGTTGGCTCCCAGCAGACAGCAGGAAAGAAGAAGC
 CCTTCGTGTACACCCAGGGCCAGGCTGTCTAAACCGGGCCTTCTCCCTTGTTCGACACGCTGCTGT
 TAAATACAAGTATTCAGCTCTTATTGAGGTCCCAGATGGCTTACAGCTGTGATGAGTGTAGCACCTGG
 GAGAAGAGAGGTCCAATAAGTTCTTCCAGATGTGTAGCCCATCCCTCCTATCTGATAGCTTTGG
 CCATCGGAGATCTGGTTTCGGCTGAAGTTGGACCCAGGAGCCGGGTGTGGGCTGAGCCCTGCCTGATTGA
 TGCTGCCAAGGAGGAGTACAACGGGGTGTAGAGAATTTTGGCAACAGGAGAGAAGCTTTTGGACCT
 TATGTTTGGGAAAGGTATGACTTGTCTTATGCCACCGTCTTTCCATTTGGAGGAATGGAGAACCCTT
 GTCTGACCTTTGTACCCCTGCCTGTAGTGGGACCGCTCCTTGGCAGATGTATCATCCATGAGAT
 CTCCACAGTTGGTTTGGAACTGGTCAACAACGCAACTGGGTGAATTTGGCTCAATGAAGTTTC
 ACCATGTACGCCAGAGGAGTCTCCACCATCTCTTGGCGCTGCGTACACCTGCTTGGAGGCTGCCA
 CGGGCGGGCTCTGCTGCGTCAACACATGGACATCACTGGAGAGGAAAACCCACTCAACAAGCTCCGCGT
 GAAGATTGAACACGCGTTGACCCGACGACACCTATAATGAGACCCCTACGAGAAAGTTTCTGCTTT
 GTCTCATACCTGGCCACTTGGTGGGTGATCAGGATCAGTTTGACAGTTTCTCAAGGCCTATGTGCATG
 AATTCAAATTCGAAGCATCTTAGCCGATGACTTCTGGACTTCTACTTGAATATTTCCCTGAGCTTAA
 GAAAAAGAGAGTGGATATCATTCCAGTTTTGAGTTTGTATCGATGGCTGAATACCCCGGCTGGCCCCG
 TACCTCCTGATCTCTCCCTGGGACTCACTCATGAAGCCTGCTGAAGAGCTAGCCCAACTGTGGGCG
 CCGAGGAGCTGGACATGAAGGCCATTGAAGCCGTGGCCATCTCTCCCTGGAAGACCTACCAGCTGGTCTA
 CTTCTGGATAAGATCTCCAGAAATCCCTCTCCCTCTGGAAATGTAAAAAACTTGGAGACACATAC
 CCAAGTATCTCAAATGCCCGAATGCAGAGCTCCGGCTGCGATGGGGCCAAATCGTCTTAAAGACGACC
 ACCAGGAAGATTTCTGGAAGTGAAGGAGTTCTGCATAACCAGGGGAAGCAGAAGTATACACTCCGCT
 GTACCACGCAATGATGGGTGGCAGTGGGTGGCCAGACCCTCGCCAAGGAGACTTTTGCATCCACCGCC
 TCCAGCTCCACAGCAATGTTGTCAACTATGTCCAGCAGATCGTGGCACCAAGGGCAGT

ACGCGTACGCGGCCGCTCGAG - GFP Tag - GTTTAA

Protein Sequence:

>RG200756 representing NM_020216
 Red=Cloning site Green=Tags(s)

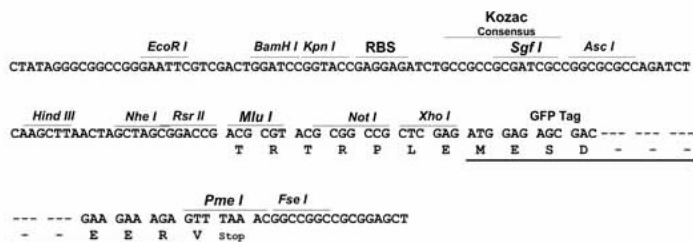
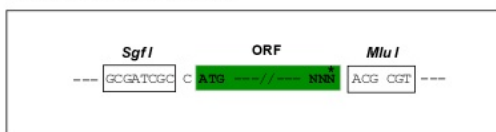
MASGEHSPGSGAARRPLHSAQAVDVASASNFRAFELLHLHLDLRAEFGPPGPGAGSRGLSGTAVLDLRL
 EPEGAAELRLDHPCLVTAALRRERPGSEPPAEPVSFYTPPFQSHYQALCVSFPQPCRAAERLQVLL
 TYRVGEGPGVWLAPEQTAGKKKPFVYTGQAVLNRAFFPCFDTPAVKYKYSALIEVPDGFATVMSASTW
 EKRGPNKFFQMCQPIPSYLIALLAIGDLVSAEVPGRSRVWAEPLIDAAKEEYNGVIEEFLATGEKLF
 YWGRYDLLFMPPSFPFGGMENPCLTFVTPCLLAGDRSLADVIHEISHSWFGNLVTNANWGEFWLNEGF
 TMYAQRRISTILFGAAYTCLAAATGRALLRQHMDITGEENPLNKLKRVKIEPGVDPDDTYNETPYEKGFCF
 VSYLAHLVGDQDFDSFLKAYVHEFKFRSILADDFLDFLEYFPELKKRVDIIPGFEFDRWLNTPGWPP
 YLPDLSPGDSLMKPAEELAQLWAAEELDMKAI EAVAI SPWKTYQLVYFLDKILQKSPPLPGNVKLGDTY
 PSISNARNAELRLRWGQIVLKNHDHEDFWKVEFLHNQKQKYTLPLYHAMMGSEVAQTLAKETFASTA
 SQLHSNVVNYVQIVAPKGS

TRTRPLE - GFP Tag - V

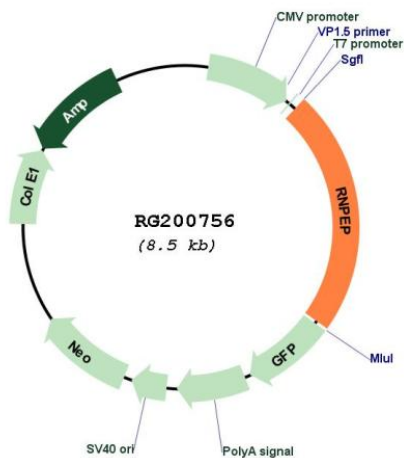
Restriction Sites: SgfI-MluI

Cloning Scheme:

Cloning sites used for ORF Shutting:



Plasmid Map:


 ACCN: NM_020216

 ORF Size: 1950 bp

OTI Disclaimer:	The molecular sequence of this clone aligns with the gene accession number as a point of reference only. However, individual transcript sequences of the same gene can differ through naturally occurring variations (e.g. polymorphisms), each with its own valid existence. This clone is substantially in agreement with the reference, but a complete review of all prevailing variants is recommended prior to use. More info
OTI Annotation:	This clone was engineered to express the complete ORF with an expression tag. Expression varies depending on the nature of the gene.
Components:	The ORF clone is ion-exchange column purified and shipped in a 2D barcoded Matrix tube containing 10ug of transfection-ready, dried plasmid DNA (reconstitute with 100 ul of water).
Reconstitution Method:	<ol style="list-style-type: none"> 1. Centrifuge at 5,000xg for 5min. 2. Carefully open the tube and add 100ul of sterile water to dissolve the DNA. 3. Close the tube and incubate for 10 minutes at room temperature. 4. Briefly vortex the tube and then do a quick spin (less than 5000xg) to concentrate the liquid at the bottom. 5. Store the suspended plasmid at -20°C. The DNA is stable for at least one year from date of shipping when stored at -20°C.
RefSeq:	NM_020216.3 , NP_064601.3
RefSeq Size:	2430 bp
RefSeq ORF:	1953 bp
Locus ID:	6051
UniProt ID:	Q9H4A4
Cytogenetics:	1q32.1
Domains:	Peptidase_M1
Protein Families:	Druggable Genome, Protease, Secreted Protein
Gene Summary:	Exopeptidase which selectively removes arginine and/or lysine residues from the N-terminus of several peptide substrates including Arg(0)-Leu-enkephalin, Arg(0)-Met-enkephalin and Arg(-1)-Lys(0)-somatostatin-14. Can hydrolyze leukotriene A4 (LTA-4) into leukotriene B4 (LTB-4) (By similarity).[UniProtKB/Swiss-Prot Function]