

Product datasheet for **RG200745**

KCTD14 (NM_023930) Human Tagged ORF Clone

Product data:

Product Type: Expression Plasmids
Product Name: KCTD14 (NM_023930) Human Tagged ORF Clone
Tag: TurboGFP
Symbol: KCTD14
Mammalian Cell Selection: Neomycin
Vector: pCMV6-AC-GFP (PS100010)
E. coli Selection: Ampicillin (100 ug/mL)
ORF Nucleotide Sequence: >RG200745 representing NM_023930
 Red=Cloning site Blue=ORF Green=Tags(s)

TTTTGTAATACGACTCACTATAGGGCGGCCGGAATTCGTCGACTGGATCCGGTACCGAGGAGATCTGCC
 GCC**CGATCGCC**

ATGTCTACTGTTGTGGAGCTGAACGTGGGGGTGAGTTCCACACCACCACCCTGGGTACCCTGAGGAAGT
 TTCCGGGCTCAAAGCTGGCAGAGATGTTCTCTAGCTTAGCCAAGGCTCCACGGACGCGGAGGGCCGCTT
 CTTTCATCGACCGCCAGCACCTATTTTCAGACCCATCCTGGACTACCTGCGCACTGGGCAAGTGCCACA
 CAGCACATCCCTGAAGTGTACCGTGAGGCTCAGTCTACGAAATCAAGCCTTTGGTCAAGCTGGGAGG
 ACATGCCACAGATCTTTGGTGAGCAGGTGTCTCGGAAGCAGTTTTTGTGCAAGTGCCGGCTACAGCGA
 GAACCTGGAGCTCATGGTGCGCCTGGCACGTGCAGAAGCCATAACAGCACGGAAGTCCAGCGTGTGTG
 TGCTGGTGGAACTGAGGAGCAGGATGCATATTATTCAGAGGTCTGTGTTTTCTGCAGGATAAGAAGA
 TGTTCAAGTCTGTGCAAGTTTGGGCCCTGGAAGGCGGTCTAGACAACAGCGACCTCATGCAGTCCCT
 GGAGATGGACATTAAGGCCAGGGGTACAAGGTATTCTCCAAGTCTACCTGACGTACCCCAAAAAGA
 AACGAATCCATTTAACATTTATTCATTCACCTTACCTGGTGG

ACGCGTACGCGGCCGCTCGAG - GFP Tag - GTTTAA

Protein Sequence: >RG200745 representing NM_023930
 Red=Cloning site Green=Tags(s)

MSTVVELNVGGEFHTTTLGTLRKFPGSKLAEMFSSLAKASTDAEGRFFIDRPSTYFRPILDYLRGTGQVPT
 QHIPEVYREAQFYIEIKPLVKLLEDMPQIFGEQVSRKQFLQVPGYSENLELMVRLARAEAITARKSSVLV
 CLVETEEQDAYYSEVLCFLQDKKMFKSVVKFGPWKAVLDNSDLMHCLEMDIKAQGYKVFVSKFYLTYPYTKR
 NEFHFNISFTFTWW

TRTRPLE - GFP Tag - V

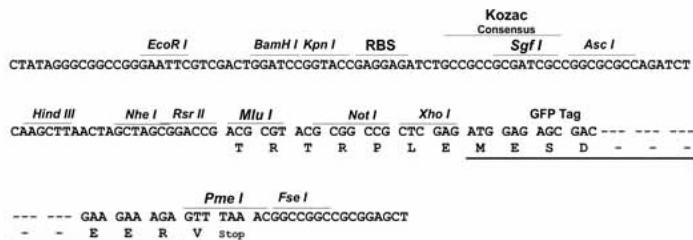
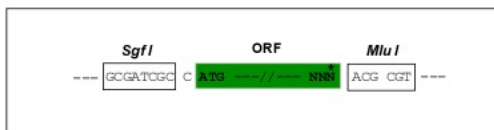


[View online »](#)

Restriction Sites: Sgfl-MluI

Cloning Scheme:

Cloning sites used for ORF Shutting:



ACCN: NM_023930

ORF Size: 675 bp

OTI Disclaimer: The molecular sequence of this clone aligns with the gene accession number as a point of reference only. However, individual transcript sequences of the same gene can differ through naturally occurring variations (e.g. polymorphisms), each with its own valid existence. This clone is substantially in agreement with the reference, but a complete review of all prevailing variants is recommended prior to use. [More info](#)

OTI Annotation: This clone was engineered to express the complete ORF with an expression tag. Expression varies depending on the nature of the gene.

Components: The ORF clone is ion-exchange column purified and shipped in a 2D barcoded Matrix tube containing 10ug of transfection-ready, dried plasmid DNA (reconstitute with 100 ul of water).

Reconstitution Method:

1. Centrifuge at 5,000xg for 5min.
2. Carefully open the tube and add 100ul of sterile water to dissolve the DNA.
3. Close the tube and incubate for 10 minutes at room temperature.
4. Briefly vortex the tube and then do a quick spin (less than 5000xg) to concentrate the liquid at the bottom.
5. Store the suspended plasmid at -20°C. The DNA is stable for at least one year from date of shipping when stored at -20°C.

RefSeq: [NM_023930.2](#), [NP_076419.1](#)

RefSeq Size: 1688 bp

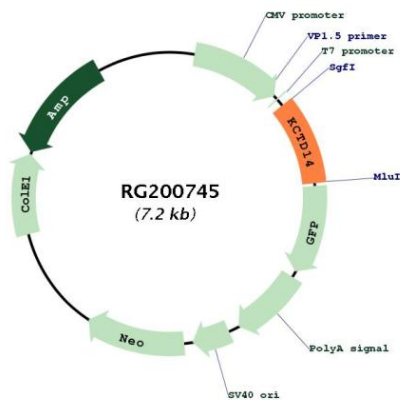
RefSeq ORF: 768 bp

Locus ID: 65987

UniProt ID: [Q9BQ13](#)

Cytogenetics: 11q14.1
 Domains: BTB, K_tetra
 Protein Families: Ion Channels: Other

Product images:



Circular map for RG200745