

Product datasheet for **RG200718**

CD98 (SLC3A2) (NM_001012662) Human Tagged ORF Clone

Product data:

Product Type:	Expression Plasmids
Product Name:	CD98 (SLC3A2) (NM_001012662) Human Tagged ORF Clone
Tag:	TurboGFP
Symbol:	CD98
Synonyms:	4F2; 4F2HC; 4T2HC; CD98; CD98HC; MDU1; NACAE
Mammalian Cell Selection:	Neomycin
Vector:	pCMV6-AC-GFP (PS100010)
E. coli Selection:	Ampicillin (100 ug/mL)



[View online »](#)

ORF Nucleotide Sequence:

>RG200718 representing NM_001012662
 Red=Cloning site Blue=ORF Green=Tags(s)

TTTTGTAATACGACTCACTATAGGGCGGCCGGAATTCGTCGACTGGATCCGGTACCGAGGAGATCTGCC
 GCCCGGATCGCC

ATGGAGCTACAGCCTCTGAAGCCTCGATCGCCGTCGTGTCGATTCCGCGCCAGTTGCCTGGCTCACATT
 CGGAGGCTGGTGTCCAGGTCTCAGCGCGGGGACGACTCAGAGTTGGGTCTCACTGTGTGCCAGAC
 TGGTCTCGAACTCTTGGCCTCAGGTGATCCTCTCCCTCAGTTCACGAGATGCCGAGATGATAGAGACG
 GGGTCTGACTGTGTACCCAGGCTGGTCTTCAACTCTTGGCCTCAAGTGATCCTCTGCCTTAGCTTCCA
 AGAATGCTGAGGTTACAGGCACCATGAGCCAGGACACCGAGGTGGATATGAAGGAGGTGGAGCTGAATGA
 GTTAGAGCCCAGAAAGCAGCCGATGAACCGGCGTCTGGGCGGCCATGTCCCTGGCGGGAGCCGAGAAG
 AATGGTCTGGTGAAGATCAAGGTGGCGAAGACGAGGCGGAGGCCGAGCCGCGGCTAAGTTCACGGGCC
 TGTCCAAGGAGGAGCTGCTGAAGGTGGCAGGACGCCCGGCTGGTACGCCACCCGCTGGGACTGCTGCT
 GCTCTTCTGGCTCGGCTGGCTCGGCATGCTTGGTGGTGGTGGTGGTGGTGGTGGTGGTGGTGGTGGT
 CGCGAGCTACCGGCGCAGAAGTGGTGGCACACGGGCGCCCTCTACCGCATCGGCGACCTTCAGGCCCTCC
 AGGGCCACGGCGCGGGCAACCTGGCGGGTCTGAAGGGGCGTCTCGATTACCTGAGCTCTCTGAAGGTGAA
 GGGCCTTGCTGGTCCAATTCACAAGAACCAGAAGGATGATGTCGCTCAGACTGACTTGTGTCAGATC
 GACCCCAATTTGGTCCAAGGAAGATTTTACAGTCTCTTGCATCGGCTAAAAAAGAGCATCCGTG
 TCATTCTGGACCTTACTCCCACTACCGGGGTGAGAACTCGTGGTCTCCACTCAGGTTGACTGTGGC
 CACCAAGTGAAGGATGCTCTGGAGTTTGGCTGCAAGCTGGCGTGGATGGGTCCAGGTTCCGGGACATA
 GAGAATCTGAAGGATGCATCCTCATTCTTGGCTGAGTGGCAAAATACCAAGGGCTTCACTGAAGACA
 GGCTCTTGATTGGGGGACTAATCCTCCGACCTCAGCAGATCCTGAGCCTACTCGAATCCAACAAGA
 CTTGCTGTTGACTAGCTACATACCTGTCTGATTCTGGTCTACTGGGAGCATACAAAATCCCTAGTCACA
 CAGTATTTGAATGCCACTGGCAATCGTGGTGCAGCTGGAGTTTGTCTCAGGCAAGGCTCCTGACTTCT
 TCTTGGCGGCTCAACTTCTCCGACTCTACCAGCTGATGCTCTTACCCTGCCAGGGACCCCTGTTTTAG
 CTACGGGATGAGATTGGCCTGGATGCAGCTGCCCTTCTGGACAGCCTATGGAGGCTCCAGTCATGCTG
 TGGGATGAGTCCAGTTCCTGACATCCAGGGGCTGTAAGTGGCAACATGACTGTGAAGGGCCAGAGTG
 AAGACCCTGGCTCCCTCTTTCTTGTTCGGCGGCTGAGTGACCAGCGGAGTAAGGAGCGCTCCCTACT
 GCATGGGACTTCCACGCTTCTCCGCTGGCCTGGACTTCTCCTATATCCGCCACTGGGACCAGAAT
 GAGCGTTTTCTGGTAGTCTTAATTTGGGATGTGGCCTCTCGGCTGGACTGCAGGCCTCCGACCTGC
 CTGCCAGCGCCAGCCTGCCAGCAAGGCTGACCTCCTGCTCAGCACCAGCCAGGCGGTGAGGAGGCTC
 CCCTTTGAGCTGGAACGCTGAACTGGAGCCTCACGAAGGGCTGCTGCTCCGCTTCCCTACGCGGCC

AGCGGACCGACCGTACGCGGCCGCTCGAG - GFP Tag - GTTTAA

Protein Sequence:

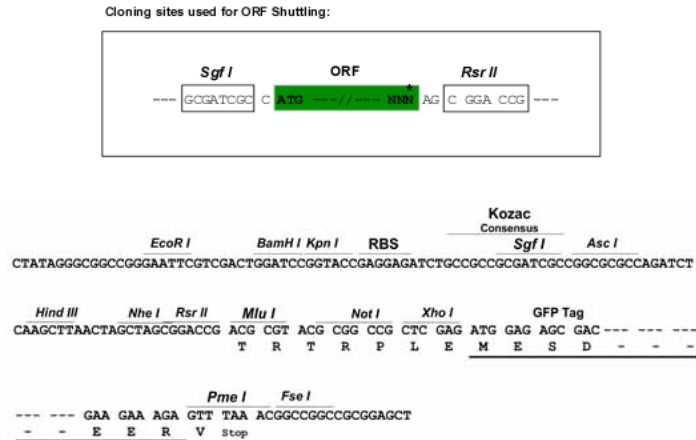
>RG200718 representing NM_001012662
 Red=Cloning site Green=Tags(s)

MELQPPEASIAVVSIPRQLPGSHSEAGVQGLSAGDSELGSHCVAQTGLELLASGDPLPSASQNAEM IET
 GSDCVTQAGLQLASSDPPALASKNAEVTGMSQDTEVDMKEVELNELEPEKQPMNAA SGAAMSLAGA EK
 NGLVKIKVAEDEAEAAAAAKFTGLSKEELLKVAGSPGWVTRWALLLFWLWLGMLAGAVVIIVRAPRC
 RELPAQKWWHTGALYRIGDLQAFQGHGAGNLAGLGRLDYLSLKVKGLVLGPIHKNQKDDVAQTDL LQI
 DPNFGSKEDFDSLLQS AKKKSIRVILD LTPNYRGENSEWFSQVDTVATKVKDALEFWLQAGVDGFQVRDI
 ENLKDASSFLAEWQNI TKGFSEDRLLIAGTNSSDLQQILS LLESNKDLLLLTSSYLSDSGSTGEHTKSLVT
 QYLNATGNRWCSWSLSQARLLTSFLPAQLLRLYQLMLFTLPGTPVFSYGDEI GLDAAALPGQPMEAPV ML
 WDESSFPDIPGAVSANMTVKQSEDPGSLLSFRRLSDQ RSKERSLLHGDFHAFSAGPGLFSYIRHWDQN
 ERFLVVLNFGDVGLSAGLQASDLPASASLPAKADLLLSTQPGREEGSPLELERLKL EPHGELLLRFYPAA

SGPTRRRLE - GFP Tag - V

Restriction Sites:

Sgfl-RsrII

Cloning Scheme:


ACCN: NM_001012662

ORF Size: 1890 bp

OTI Disclaimer: Due to the inherent nature of this plasmid, standard methods to replicate additional amounts of DNA in E. coli are highly likely to result in mutations and/or rearrangements. Therefore, OriGene does not guarantee the capability to replicate this plasmid DNA. Additional amounts of DNA can be purchased from OriGene with batch-specific, full-sequence verification at a reduced cost. Please contact our customer care team at custsupport@origene.com or by calling 301.340.3188 option 3 for pricing and delivery.

The molecular sequence of this clone aligns with the gene accession number as a point of reference only. However, individual transcript sequences of the same gene can differ through naturally occurring variations (e.g. polymorphisms), each with its own valid existence. This clone is substantially in agreement with the reference, but a complete review of all prevailing variants is recommended prior to use. [More info](#)

OTI Annotation: This clone was engineered to express the complete ORF with an expression tag. Expression varies depending on the nature of the gene.

Components: The ORF clone is ion-exchange column purified and shipped in a 2D barcoded Matrix tube containing 10ug of transfection-ready, dried plasmid DNA (reconstitute with 100 ul of water).

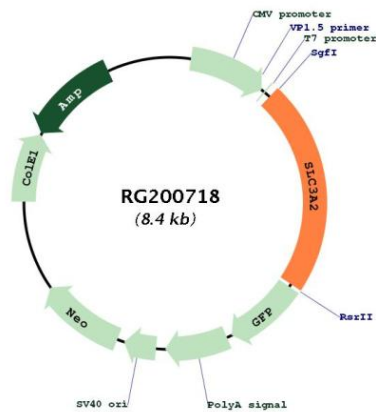
- Reconstitution Method:**
1. Centrifuge at 5,000xg for 5min.
 2. Carefully open the tube and add 100ul of sterile water to dissolve the DNA.
 3. Close the tube and incubate for 10 minutes at room temperature.
 4. Briefly vortex the tube and then do a quick spin (less than 5000xg) to concentrate the liquid at the bottom.
 5. Store the suspended plasmid at -20°C. The DNA is stable for at least one year from date of shipping when stored at -20°C.

RefSeq: [NM_001012662.1](#), [NP_001012680.1](#)

RefSeq Size: 2318 bp
RefSeq ORF: 1896 bp
Locus ID: 6520
UniProt ID: [P08195](#)
Cytogenetics: 11q12.3
Protein Families: Transmembrane

Gene Summary: This gene is a member of the solute carrier family and encodes a cell surface, transmembrane protein. The protein exists as the heavy chain of a heterodimer, covalently bound through di-sulfide bonds to one of several possible light chains. The encoded transporter plays a role in regulation of intracellular calcium levels and transports L-type amino acids. Alternatively spliced transcript variants, encoding different isoforms, have been characterized. [provided by RefSeq, Nov 2010]

Product images:



Circular map for RG200718